

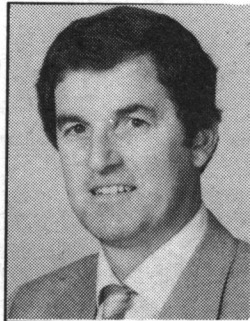
ARTHUR F.

JOHNSON & ASSOCIATES LTD., REALTOR

PROVIDING REAL ESTATE SERVICES SINCE 1972

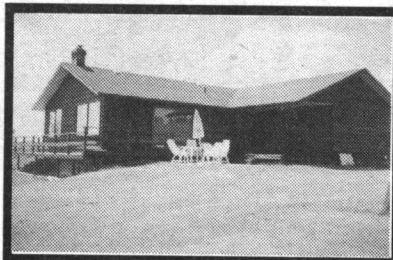
Let me bring Toronto, Mississauga, & Brampton to your home via Rogers Cable TV

877-5165
Tor. 874-3040



LARRY BARNSTAPLE
Sales Representative*
Res. 519-833-9578

IT'S LIKE NEW
\$214,900.
Exceptional 4 bedroom on pool sized lot - with the pool. Gleaming hardwood & broadloom. Beautiful rec room with log burning fireplace - must be viewed. 93-2-130



EXECUTIVE RETREAT
47 acres of panoramic views. Modern 3 bedroom, hot tub with sauna, insulated horse barn. Pond, new fencing.



A SECLUDED "8"
Acres with trees, 5 bedroom home, many hand crafted features, 2 stall barn, heated workshop, two car garage. Good area - asking \$249,000
93-2-194



TRUE COUNTRY VALUE
Asking \$214,900 - 3 bedroom bungalow on treed one acre lot. Stone fireplace, walk-out to large deck, finished rec room with walkout to back yard. Minutes to "GO". 92-2-457



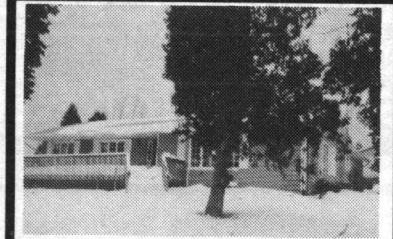
IF YOU LOVE LOG
Beautiful handcrafted log home overlooking the Credit River. Pine floors throughout. The backyard is right out of "Homes and Gardens" with a deck on three sides. Mstr. bdrm. features ensuite, laundry, sitting room plus walkout to balcony. Four bdrm. apt. over garage. Asking \$349,000. 92-2-539

SECLUDED CHARM
Asking \$249,900, 4 1/2 beautiful acres, newer fenced field, wide open lawns. Adjacent to pine reforestation; new front porch, deck & pool; soft pine interior, main floor family room, double car garage. 92-2-516



ASKING \$184,900
3 bedroom bungalow in one of Erin's better neighbourhoods. Gleaming hardwood floors, very private well treed back yard, Sunny kitchen and finished rec room. Asking \$184,900. 92-2-547

YESTERDAY'S CHARM
Call for more information.
93-2-186



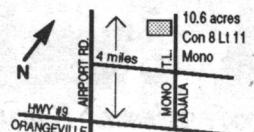
IT'S TEN!
Secluded acres of trees and rolling land. Small barn suitable for horses, spacious 4 bedroom home with pine flooring, entertainers living room. Walkouts to patio & decks. Close to Ballinacree and GO Transit. 93-2-998

ONLY \$379,900
Scenic 72 acre farm with bank barn 15 min to "GO" train. Exceptional 2600 sq. ft. home. With walk-out basement, oak kitchen, main floor laundry family room with fireplace. 92-2-128

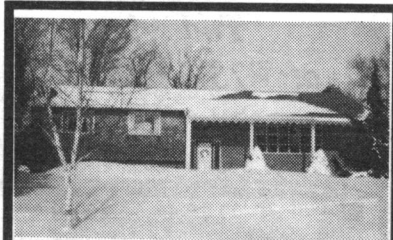
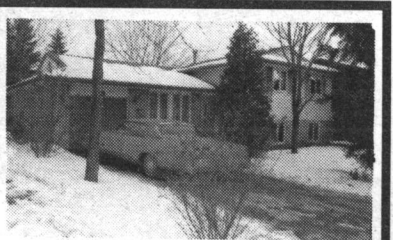


FANTASTIC VALUE
\$89,900 only. 10.6 beautiful acres. Great views, trees, close to Hwy 49 and Airport Road. Power of Sale. Don't wait, call Larry.

INDUSTRIAL LOT
Located in Halton 1.34 acres on paved road water, gas & sewers. Asking \$99,000



DOWN BY THE LAKE
\$169,900 asking for this quality 3 bedroom on large treed lot in family neighbourhood. Eat-in kitchen with walkout to patio and fenced yard. Gleaming hardwood and broadloom & casement windows. Lots of upgrades. 93-2-154



WHAT A SETTING!
\$264,900 Asking. 4 bedroom bungalow sitting well back on 3 acre lot. Finished basement, log burning fireplace, oversized two car garage, a forest for a backyard with walking trails. Call Larry* 874-3040 93-2-193



23 PRIVATE ACRES
Spring fed pond. Open meadow. Executive Cape Cod home with spacious family room addition with cathedral ceiling & stone fireplace situated to take advantage of the views. 5 stall insulated barn with paddocks. 93-2-115



HORSE FARM AND STONE HOUSE
On 89 acres, large bank barn, indoor riding arena, 38 stalls, stream, pond, 5 acres of bush. 92-2-485



IT SPARKLES IN ROCKWOOD
\$179,900. Quality 3 bedroom on extra large lot, Barzotti Kit., huge dining area, main floor family room, hi eff. gas heating, 1 1/2 baths. 93-2-183

RE/MAX BLUE SPRINGS Realty (Halton) Corp.

SERVICE OF THE '90s!
Wayne will market your property on TWO Real Estate Boards with over 1500 sales reps or members at no additional cost to you!



SERVICE OF THE '90s!
Wayne offers a written comprehensive market evaluation of your home at no cost to you!

BUS. (519) 856-4348
TOR. (416) 874-3053

Wayne Saunders
*Sales Associate

FAX (519) 856-2128

Wayne Sells Properties Just Like Yours!

\$159,900 - SOUTH ROCKWOOD



This spacious updated Century Home offers all the modern conveniences with the charm of yesteryear. A 2 minute walk from Rockwood Conservation Park on a well treed & landscaped lot and having extensive rockeries & terraced grounds. A pleasure to view. Call Wayne*. RMRW93-39

\$309,900 - SERIOUS ABOUT HORSES!



Located 4 miles north of the 401 on Hwy 24. This 15.5 acre property is ideal for the Equestrian. 8 yr. old 144' x 60' indoor arena, 8 yr. old steel Horse barn with 19 Box stalls, dirt floors in stalls, concrete aisles & 2000 bale storage above. Insulated 20 x 22 tack room, paddocks, sand ring, and a 20+ year old sidings surrounded by trees. Just Call Wayne* RMRW93-34

\$159,900 - ROCKWOOD



This century home is brand new, almost! Everything has been replaced, almost! Lovely 100 x 106 landscaped village lot with mature trees. Fenced yard, double garage and too much to mention here. Call Wayne* 856-4348 RMRW93-33

\$319,000 - ROCKWOOD



on a double lot backing on to Grand River Conservation this custom built 3800 sq. ft. home features a 4 car Garage, 2 Bedroom in-law suite, heat pump, solarium (2 story) and a master suite with all comforts. Priced below builder's cost. Call Wayne*. RMRW93-32

VACANT LAND

Lovely 46 acre parcel, 30 of which is workable. Located on a paved maple-lined road 1 1/2 miles north of HWY 7 and just west of Acton. Picture perfect with numerous building sites. RMRW93-17

\$239,900 - COUNTRY



In a tranquil village setting east of Rockwood on 3/4 acres and backing onto conservation land and the Eramosa River. This custom built 2000+ sq. ft. bungalow has it all. RMRW93-03

\$195,500 - ROCKWOOD



Custom-built with you in mind. 1750 sq. ft. of upgraded luxury in this 4-year-old 3 bedroom home. Cathedral ceilings, fireplace, family room & inground pool are a few of the features. Just call Wayne. RMRW93-25

\$239,000 - ROCKWOOD



Century home on 2 1/2 lots, one of which may be severed. Over 3,200 sq. Ft. of history. Large principal rooms and 6+ bedrooms. RMRW93-20

\$149,900



ROCKWOOD - PRIVATE & PRETTY
Call Wayne* to sell yours too!

\$184,900 - IT STARTED IN 1873



...as a country school house located just east of Rockwood off Hwy. 7. This historic, renovated home is now for sale. Placed on .8 acre and featuring 3+ bedrooms, country kitchen, main floor laundry, cathedral ceilings and much more! Just call Wayne. RMRW93-26

\$249,900 JUST FOR YOU



This 4 year old home located 3 miles from Acton and 14 miles by Hwy. 25 to the 401 is placed on 4.86 acres of rolling land. A lovely mature setting with maples across the front and mixed bush to the rear and an 80 ft. pond. Open concept of 2x6 construction with R20 walls & R40 ceilings the home is tasteful & a pleasure to view. RMRW93-16

\$279,900 SPACIOUS CHARMER



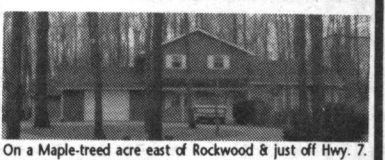
2.6 acres only 20 minutes to the 401 or 10 minutes east to Guelph. 24 x 32 ft. 4 year old workshop, 400 amp service, central air, 4 bathrooms, in-law suite in basement with full walkout, 5 bedrooms, family room with fireplace, den with fireplace, plus a huge deck. This 12 year old custom built quality 2600 sq. ft. home has it all! RMRW93-01

\$253,900 - HOBBY FARM



20 acres located just 5 miles north of Hwy. 24. This spacious property offers approx. 3 acres of bush, a large pond and a secluded 2180 sq. ft. 2 storey home only 19 years old. Included is a 35 x 25 block & steel barn. Just call Wayne. RMRW93-27

\$279,500



On a Maple-treed acre east of Rockwood & just off Hwy. 7. Custom home offering 4 bedrooms, cedar Florida room with hot tub, fireplace in family room, and a bunch more. Two workshops with heat & hydro & the larger being 32' x 40' insulated, floor drains, and set up for large trucks. Just call Wayne* RMRW93-37

\$246,900 - EDEN MILLS



MEMBER OF THE GUELPH & DISTRICT REAL ESTATE BOARD AND THE BRAMPTON REAL ESTATE BOARD TO SERVE YOU BETTER!

.82 acres of privacy & your own brook, this custom passive solar Residence is for sale. Only year old and designed by Award winning Architect Charles Simon. A private deck off the master, to the sauna and the many other features of this retreat nothing is lacking. For a private viewing call Wayne. RMRW93-30