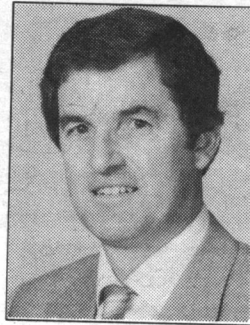


ARTHUR F.
JOHNSON & ASSOCIATES
LTD., REALTOR

PROVIDING REAL ESTATE SERVICES SINCE 1972

Let me bring Toronto, Mississauga, & Brampton to your home via Rogers Cable TV

877-5165
Tor. 874-3040



LARRY BARNSTAPLE
Sales Representative*
Res. 519-833-9578

DOWN BY THE LAKE
\$169,900 asking for this quality 3 bedroom on large treed lot in family neighbourhood. Eat-in kitchen with walkout to patio and fenced yard. Gleaming hardwood and broadloom & casement windows. Lots of upgrades. 93-2-154



WHAT A SETTING!
\$264,900 Asking. 4 bedroom bungalow sitting well back on 3 acre lot. Finished basement, log burning fireplace, oversized two car garage, a forest for a backyard with walking trails. Call Larry* 874-3040 93-2-193



23 PRIVATE ACRES

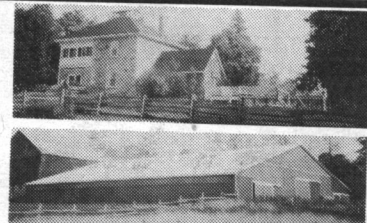
Spring fed pond. Open meadow. Executive Cape Cod home with spacious family room addition with cathedral ceiling & stone fireplace situated to take advantage of the views. 5 stall insulated barn with paddocks. 93-2-115



LOTS OF WILDLIFE!!!
25 panoramic acres situated well back off the road in a secluded area. Three bedrooms, 4 and 3 pc. baths. Walkout basement with two fireplaces. Fish in your stocked trout pond and work in your workshop. Oversized double garage. Asking \$299,000. 92-2-541

HORSE FARM AND STONE HOUSE

On 89 acres, large bank barn, indoor riding arena, 38 stalls, stream, pond, 5 acres of bush. 92-2-485



IT'S LIKE NEW
\$214,900. Exceptional 4 bedroom on pool sized lot - with the pool. Gleaming hardwood & broadloom. Beautiful rec room with log burning fireplace - must be viewed. 93-2-130

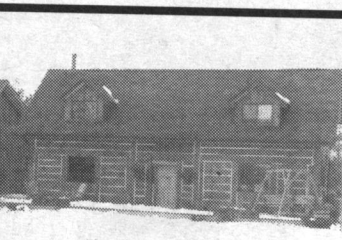


SHOWS 10+++
Asking 189,900. 1,850 sq. ft. home with 6 bdrms. and 2 kitchens. Huge MF family room with floor to ceiling brick Heatilator, paved driveway to private back yard with 6 ft. privacy fence. Hardwood under broadloom. 3 & 4 baths. 92-2-542



GOLF AT BLUE SPRINGS

Asking \$219,000 - 3 bedroom bungalow on treed one acre lot. Stone fireplace, walkout to large deck, finished rec room with walkout to back yard. Minutes to "GO". 92-2-457



IF YOU LOVE LOG

Beautiful handcrafted log home overlooking the Credit River. Pine floors throughout. The backyard is right out of "Homes and Gardens" with a deck on three sides. Mstr. bdm. features ensuite, laundry, sitting room plus walkout to balcony. Four bdrm. apt. over garage. Asking \$349,000. 92-2-539

SECLUDED CHARM
Asking \$249,900. 4 1/2 beautiful acres, newer fenced field, wide open lawns. Adjacent to pine reforestation; new front porch, deck & pool; soft pine interior, main floor family room, double car garage. 92-2-516



ASKING \$184,900
3 bedroom bungalow in one of Enn's better neighbourhoods. Gleaming hardwood floors, very private well treed back yard, Sunny kitchen and finished rec room. Asking \$184,900. 92-2-547



YESTERDAY'S CHARM

Call for more information.

93-2-186

IT SPARKLES IN ROCKWOOD

\$179,900. Quality 3 bedroom on extra large lot, Barzotti kit., huge dining area, main floor family room, hi eff. gas heating. 1 1/2 baths. Don't wait call Larry* 877-5165 93-2-183



ONLY \$379,900

Scenic 72 acre farm with bank barn 15 min to "GO" train. Exceptional 2600 sq. ft. home. With walkout basement, oak kitchen, main floor laundry family room with fireplace. 92-2-128



FOR RENT

Meadowdale -- 3 bedroom upper level semi, garage, fenced yard. \$250.00 per month

INDUSTRIAL LOT

Located in Halton 1.34 acres on paved road water, gas & sewers. Asking \$99,000



A SECLUDED "8"

Acres with trees, 5 bedroom home, many hand crafted features, 2 stall barn, heated workshop, two car garage. Good area - asking \$249,000 93-2-194



RE/MAX BLUE SPRINGS
Realty (Halton) Corp.

SERVICE OF THE '90s!

Wayne will market your property on TWO Real Estate Boards with over 1500 sales reps or members at no additional cost to you!

BUS. (519) 856-4348
TOR. (416) 874-3053



Wayne Saunders
Sales Associate

SERVICE OF THE '90s!

Wayne offers a written comprehensive market evaluation of your home at no cost to you!

FAX (519) 856-2128

Wayne Sells Properties Just Like Yours!

\$149,900

\$279,500



SOLD
ROCKWOOD - PRIVATE & PRETTY
Call Wayne* to sell yours too!



On a Maple-treed acre east of Rockwood & just off Hwy. 7. Custom home offering 4 bedrooms, cedar Florida room with hot tub, fireplace in family room, and a bunch more. Two workshops with heat & hydro & the larger being 32' x 40' insulated, floor drains, and set up for large trucks. Just call Wayne* RMRW93-37

\$309,900 - SERIOUS ABOUT HORSES?



Located 4 miles north of the 401 on Hwy 24. This 15.5 acre property is ideal for the Equestrian. 8 yr. old 144' x 60' indoor arena, 8 yr. old steel Horse barn with 19 Box stalls, dirt floors in stalls, concrete aisles & 2000 bale storage above. Insulated 20 x 22 tack room, paddocks, sand ring, and a 20+ year old sidelit surrounded by trees. Just Call Wayne* RMRW93-34

\$184,900 - IT STARTED IN 1873



...as a country school house located just east of Rockwood off Hwy. 7. This historic, renovated home is now for sale. Placed on .8 acre and featuring 3+ bedrooms, country kitchen, main floor laundry, cathedral ceilings and much more! Just call Wayne. RMRW93-26

SUNDAY OPEN HOUSE

\$239,000 - ROCKWOOD



124 PARKEDGE, ROCKWOOD.
Come out and see what your money can get you on March 21 from 2-4 pm.



Century home on 2 1/2 lots, one of which may be severed. Over 3,200 sq. Ft. of history. Large principal rooms and 6+ bedrooms. RMRW93-20

\$259,900 JUST FOR YOU



This 4 year old home located 3 miles from Acton and 14 miles by Hwy. 25 to the 401 is placed on 4.86 acres of rolling land. A lovely mature setting with maples across the front and mixed bush to the rear and an 80 ft. pond. Open concept of 2x6 construction with R20 walls & R40 ceilings the home is tasteful & a pleasure to view. RMRW93-16

\$279,900 SPACIOUS CHARMER



2.6 acres only 20 minutes to the 401 or 10 minutes east to Guelph. 24 x 32 ft. 4 year old workshop, 400 amp service, central air, 4 bathrooms, in-law suite in basement with full walkout, 5 bedrooms, family room with fireplace, den with fireplace, plus a huge deck. This 12 year old custom built quality 2600 sq. ft. home has it all! RMRW93-01

\$253,900 - HOBBY FARM



20 acres located just 5 miles north of Hwy. 24. This spacious property offers approx. 3 acres of bush, a large pond and a secluded 2180 sq. ft. 2 storey home only 19 years old. Included is a 35 x 25 block & steel barn. Just call Wayne. RMRW93-27

\$212,000



PUSLINCH - SOUTH OF 401
Call Wayne* to sell yours too!

VACANT LAND

Lovely 46 acre parcel, 30 of which is workable. Located on a paved maple-lined road 1 1/2 miles north of HWY 7 and just west of Acton. Picture perfect with numerous building sites. RMRW93-17

\$239,900 - COUNTRY



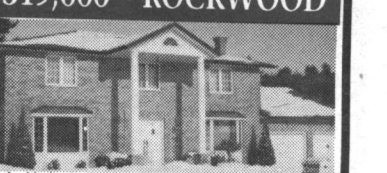
In a tranquil village setting east of Rockwood on 3/4 acres and backing onto conservation land and the Eramosa River. This custom built 2000+ sq. ft. bungalow has it all. RMRW93-03

\$159,900 - ROCKWOOD



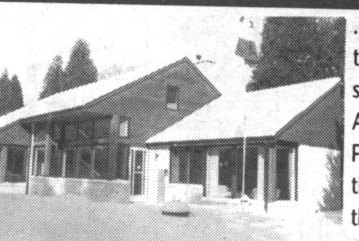
This century home is brand new, almost! Everything has been replaced, almost! Lovely 100 x 106 landscaped village lot with mature trees. Fenced yard, double garage and too much to mention here. Call Wayne* 856-4348 RMRW93-33

\$319,000 - ROCKWOOD



on a double lot backing on to Grand River Conservation this custom built 3800 sq. ft. home features a 4 car Garage, 2 Bedroom in-law suite, heat pump, solarium (2 story) and a master suite with all comforts. Priced below builder's cost. Call Wayne*. RMRW93-32

\$246,900 - EDEN MILLS



.82 acres of privacy & your own brook, this custom passive solar Residence is for sale. Only 6 years old and designed by Award winning Architect Charles Simon. From the private deck off the master, to the sauna and the many other features of this retreat nothing is lacking. For a private viewing call Wayne. RMRW93-30

***MEMBER OF THE GUELPH & DISTRICT REAL ESTATE BOARD AND THE BRAMPTON REAL ESTATE BOARD TO SERVE YOU BETTER!**