

Thompson nets winner

In girls Indoor Soccer this week, Yellow team player Colleen Thompson scored a direct hit on the Blue team's water jug when the soccer ball bounced off a basketball net. Acton High School Head Custodian Mr. Doyle was called in to mop up the cascading water. This is part of the fun of the game.

Long kicks were the order of the day in the first game between the Yellow and Blue team. One ball was even briefly lost under the bleachers. Blue player Lindsay Sproule, in goal for the first time, adopted the appropriate hands-on-knees fierce goalie stance and saved half-a-dozen shots. Blue defense players, Paula Gougeon and Courtney Evers-Jordan used their body-blocking abilities to fend off Yellow attacks by forwards Alanna Zelek and Leah Crane. At the end of the game Yellow player



Indoor Soccer

Colleen Thompson scored with a side kick into the Blue net for the winning goal in the 1-0 game.

The second game was between the Purple team and the Little Red Devils. This game was a running/passing game. Little Devil player Amanda Burgan had a direct hit on goal that was saved and then strategy began.

Little devils Jen Tremblay and Brianne Evers-Jordan tried to control the angle of the ball deflecting from the back wall so that teammate Lisa Campbell at the top of the crease could kick it in. However, Purple players Angie Crane on defense and Jessie Brown passed well so that Kathy Irvine could rivet one high fast and inside over the Red goalie's left shoulder. It was her second goal of the season. The 1-0 score for the Purple team was unchanged throughout the game.

In the second half, the exuberant high kickers on the Purple team were warned by referee Kim Timmings to keep their feet down.

Mea Culpa: Carolyn MacNeal would like her soccer friends to know the correct spelling of her name. It is not NcNeil.

PROVEN PERFORMANCE
SOLD

ARTHUR F. JOHNSON & ASSOCIATES LTD., REALTOR

877-5165

874-3040

Tor.

833-9714

Erin



873-0655

Res.



MARTHA SUMMERS
Sales Representative

ANOTHER REDUCTION



GEORGETOWN VALUE \$145,900

Hardwood floors, finished rec room, fenced yard with deck, double driveway. **VENDOR HAS PURCHASED.**

93-2-114

NEW!



CALEDON WHS

There is more than meets the eye! Superb executive home near Cheltenham with attached insulated workshop, separate nanny's quarters, pool and well appointed home. A must to see with superb Caledon location.

NEW!



2.75 ACRES

Country value in Halton Hills 10 minutes to 401. Pine floors, wood stove and walkout to deck from living room are a treat! 3 bedrooms plus den, + large two car garage. \$199,000

93-2-162

NEW!



GLEN WILLIAMS \$149,000

Charming 2 bedroom with separate dining room, walkout from living room to deck & garden, bright spacious kitchen, totally upgraded.

93-2-149

NEW!



HALTON HILLS \$349,000

Treed 1 acre with bright, spacious home for family living. Country skylit kitchen, family room with fireplace and walkout to yard, billiard room, 5 bedrooms, plus inground pool. Country value.

93-2-148

NEW!



PRIME CALEDON LOCATION

Entertaining? Large country kitchen for after X country skiing or formal dining room with fireplace for those elegant candlelit dinners. Executive home on 20 treed acres.

93-2-147



ERIN \$229,000

Country charm and value featuring open concept with lots of light, solarium type kitchen, marble in ensuite and walkout from master to large deck.

92-2-281



ROCKWOOD \$359,000

Watch the sunsets, watch the crops grow. Watch your animals graze, watch the seasons change. Worth Watching!!

92-2-474



CALEDON EHS \$249,000

Original farmhouse tastefully redone with today's conveniences. Bleached oak kitchen, finished loft with dormer, private location south of King St.

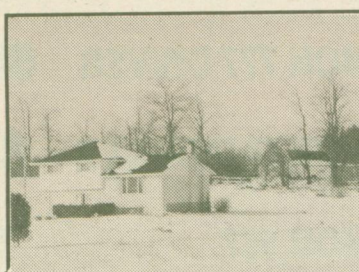
92-2-495



MATURE TREED LOT

Super garage/workshop, 2 private yards, 2 private entrances, 2 private living areas. 2 great places to start.

92-2-526



ERIN 5 ACRES \$239,900

- * 4 bedrooms
- * pine rec room
- * pine kitchen
- * 5 stall barn
- * paddocks

92-2-459



ERIN 10 ACRES \$249,000

- * rolling land
- * S. of Erin Village
- * 3 bedrooms
- * 2 stall barn
- * paddocks

92-2-275



MILTON'S EDGE \$524,000

- * 30 private acres
- * hardwood floors
- * teak sunroom
- * hot tub
- * executive standards

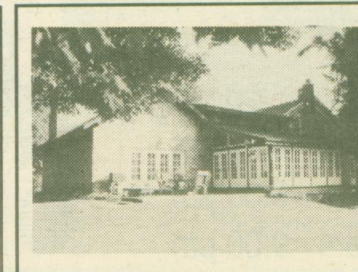
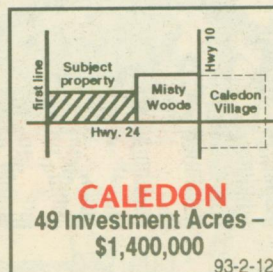
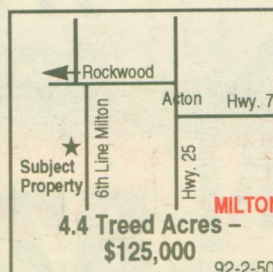
92-2-510



ERIN 89 ACRES \$589,000

Located near Acton, this 38 stall barn with indoor arena and stone home is excellent value - Sand ring, pond, paddocks and stream.

92-2-485



CALEDON ESTATE

1868 Stone home, log cabin, separate staff and office bldg. on 64 acres complete with barn, pool and escarpment views.

92-2-492



MARILYN WORRALL
Sales Rep.*

ARTHUR F. JOHNSON & ASSOCIATES LTD., REALTOR

247 Guelph Street
Georgetown, Ont. L7G 4A8

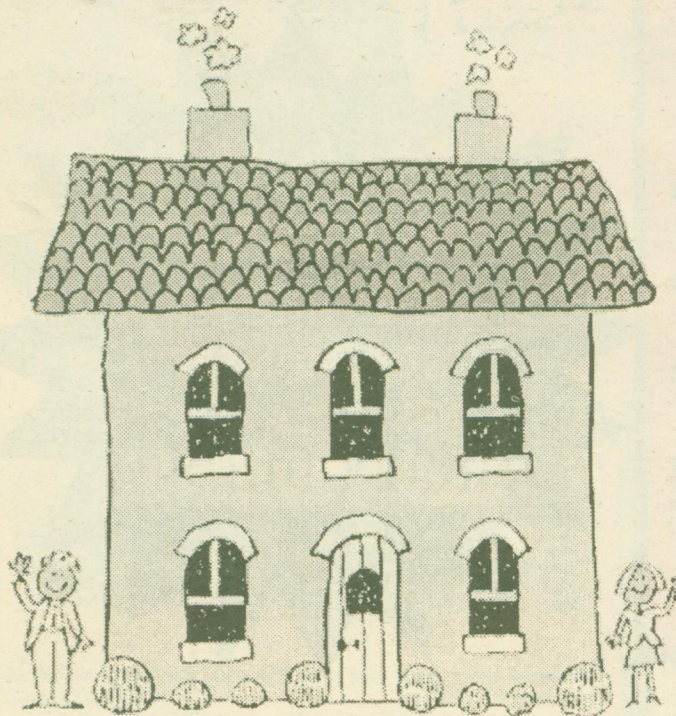
Bus. (416) 877-5165

Erin (519) 833-9714

Tor. (416) 874-3040

Why Pay Rent...

When you can enjoy the benefits of home ownership!



FLASH

FIRST TIME BUYER?
LOOKING FOR COUNTRY BARGAIN?

Completely renovated open concept home with lots of pine, skylights, huge kitchen on a fenced 1/3 of an acre. Only \$173,500. Call Marilyn* for details.

Not intended to solicit properties already for sale