

our Valentine's Day gift to you from
The New Weight Watchers Program
Chocolate - Banana Split Pie

Impress your guests with this make-ahead frozen chocolate dessert. It's the perfect ending to a company dinner. *Makes 8 servings.*

12 graham crackers (2 1/2-inch squares), made into crumbs	2 medium bananas (about 6 ounces each), peeled
1/4 cup plus 2 teaspoons chocolate syrup, divided	3/4 cup thawed frozen dairy whipped topping
16 fluid ounces chocolate nonfat frozen dietary dessert or nonfat frozen yogurt	

In small bowl combine graham cracker crumbs and 2 tablespoons chocolate syrup. Using a fork, mix well. Using the back of a spoon, press crumb mixture over bottom and up sides of a 9-inch pie plate; set aside.

Using electric mixer on medium speed, or food processor, beat frozen dessert until smooth. Using a spatula, carefully spread over prepared crust. Cover with plastic wrap and freeze until firm, about 2 hours.

To serve, slice bananas and arrange in a circle over the frozen dessert. Spread whipped topping over bananas and drizzle with remaining chocolate syrup.

Each serving provides: 1/2 FR, 1/2 B, 95 C

Variation: Substitute 2 cups fresh strawberries, sliced, for the bananas. In Selection™ Information, Omit 1/4 FR.

(For your information, the FA, P, B, C, and FR designations in the recipes refer to fat, protein, bread, calories, and fruit components of the Weight Watchers Meal Plan. Complete nutrition information for these recipes is available upon request.)

Recipe adapted from the New Weight Watchers Program by Weight Watchers International, Inc. 1992 owner of registered trademark. All rights reserved. Reprinted with arrangement with New American Library a division of Penguin Books USA, Inc.

For more information or to attend a meeting near you, call 1-800-387-8227

Wastewise offers "partnership" to town

By Dianne Cornish

Wastewise, Georgetown's resource management and recycling centre, needs "supporting partners" in the community and wants to work with the Town of Halton Hills in developing "innovative, people-oriented waste management." These and other direct comments formed the basis of a presentation made to town council Monday night by the centre's project manager, Diane van de Valk.

"The opportunities for the Town of Halton Hills to become a provincial leader in waste management are virtually unlimited," she told council before inviting the Town to enter into a partnership with the recycling centre. At the same time, van de Valk presented a 485-name petition asking council to support Wastewise in five specific ways, including the reinstatement of blue box material collection.

Wastewise asked for the town's support last fall. Four of their requests were rejected while the fifth—town collection of blue box materials at Wastewise—was reconfirmed. However, blue box collection "was terminated January 25 without notice from the town," van de Valk said.

The petition asks council to reconsider the five requests. Wastewise wants town collection of blue box materials reinstated. It also wants the town to: collect glass and ceramics from the recycling centre and deliver it to an aggregate company for re-use; provide and install signs promoting Wastewise at the key access points to Acton and Georgetown; make a \$1,000 contribution for a neighborhood composting program; and hire representatives from Students for the Environment to effectively promote backyard composting.

"The total estimated costs of these requests is a one-time cost of \$2,000 and \$115 per month for service costs," van de Valk told council.

Collection of blue box materials at Wastewise was curtailed by the town because a region-wide blue

box collection system was introduced early this month. Laidlaw Waste Systems Limited of Burlington has the contract to collect recyclables at houses throughout Halton. However, as a result of the contract, several non-residential stops have been eliminated. Among these are Wastewise, Georgetown and District Memorial Hospital and the Civic Centre.

Van de Valk argued that single-tier waste management, proposed by Halton Region, isn't the best approach to handling waste generated by Halton Hills. "Because the vast majority of the (Halton's) garbage is generated by our highly urbanized areas to the south, Burlington and Oakville, it stands to reason that waste management systems will be developed around their needs," she said. Halton Hills contributes about 10 per cent of the total waste generated by the region, council was told.

Advocating a more centralized approach to waste management which would fit the needs of Halton Hills residents, van de Valk said the town has an opportunity to work with Wastewise in innovative and effective waste management. "Our strong rural/urban mix is well suited to a system developed on the basis of the same principles as Wastewise...; keep it local and keep it low-tech."

To emphasize the merits of her argument, van de Valk related the consequences of a recent regional council decision to discontinue funding support for the Leferink container station in Georgetown. Because of the regional decision, rural residents of Halton Hills must either pay \$1.50 for each garbage bag dropped off at the local station or transport their waste to the Milton landfill where it can be disposed of at no cost. Up until Jan. 1 of this year, urban taxpayers absorbed costs, allowing rural residents to drop off their garbage at Leferink's, at no cost.

"Ending (free) container services provided by Leferink will likely be followed by curbside collection of

garbage for rural residents, resulting in an unwanted and considerable increase in property tax," she said.

Van de Valk also suggested that the town will benefit, in economic terms, if it works with Wastewise to become "a leader in resource management." There has been \$506,000 of direct economic spin-off for Halton Hills as a direct result of the operation of Wastewise over the past two years, she noted.

Councillor Marilyn Serjeantson said the region has recycling igloos at the Halton Hills works yard on Trafalgar Road. Residents can drop off their recyclables there, at no cost, she said. Serjeantson asked van de Valk to comment about why that system wouldn't work.

Visitors to Wastewise like to leave their recyclables there because the centre offers "one-stop shopping," van de Valk replied. Many of the items left at Wastewise can be re-used and are sold at modest prices to area residents. When Leferink was handling rural garbage at no cost, rural residents found it convenient to take their recyclables to Wastewise and then go down the road and dispose of their garbage at Leferink's, she said.

Having different locations around town where recyclables can be dropped off can be "cumbersome," van de Valk argued.

Serjeantson suggested that van de Valk draw up a formal proposal about the proposed partnership between the town and Wastewise.

Councillor Norm Elliott said it might be possible to move the igloos from the Trafalgar Road works yard to Wastewise, but town engineer Bob Austin suggested that might cause confusion because the works yard has served as a drop-off for recyclables for the past seven or eight years.

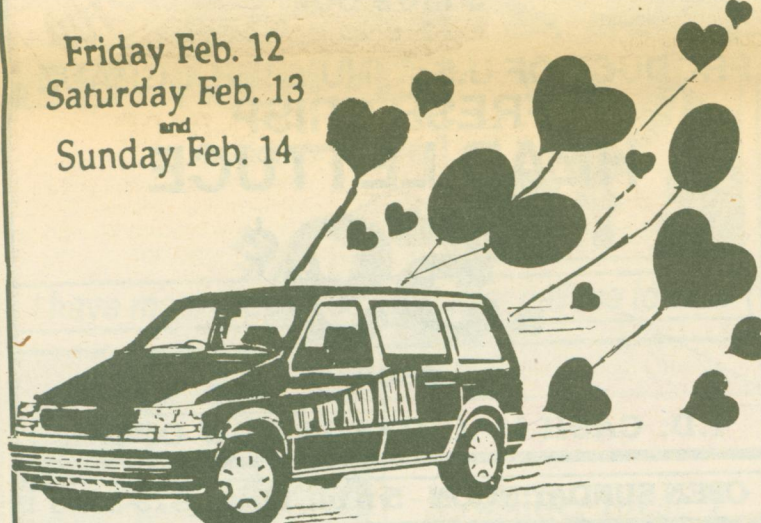
Last week, council supported a recommendation that regional council reconsider its decision and reinstate the collection of recyclables at Wastewise and Georgetown and District Memorial Hospital.

Ya Gotta Have Hearts... We've Got Miles and Miles of Hearts!

Love is not something predictable.. It is unique and unusual and everchanging. This Valentine's Day express everything from new love to true love with... **BALLOONS in many heart throbbing colours and designs. BOOK NOW!**

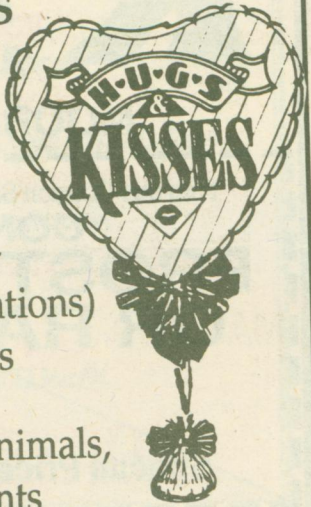
FOR YOUR CONVENIENCE WE WILL DELIVER

Friday Feb. 12
 Saturday Feb. 13
 and
 Sunday Feb. 14



...Your Valentine Headquarters!
BALLOON BOUQUETS

- ♡ Love Bunch
- ♡ Teddy Hugs & Kisses
- ♡ Hearts 'N Flowers



- just to name a few -
 fresh flowers (roses - carnations)
 & floral arrangements
ALSO
 candy, air walkers, plush animals,
 balloon air arrangements

When it comes to capturing Hearts
 Nobody does it better

UP UP AND AWAY
 90 Main St. S. Georgetown 873-2334

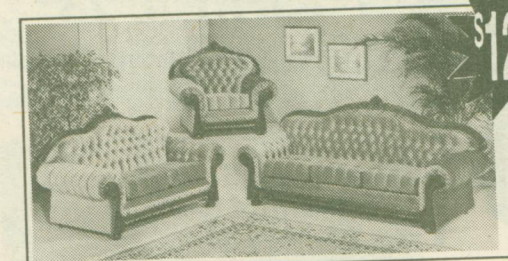
SIMMON FURNITURE



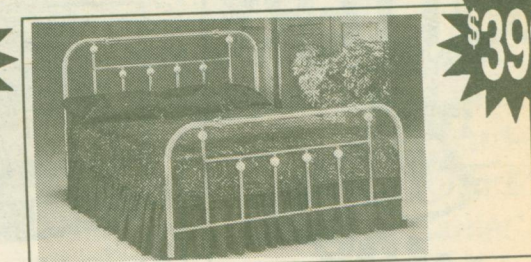
Solid pine, 6 pce. complete bedroom suite. Choice of stain and style. Reg. 1,999. **\$1099**



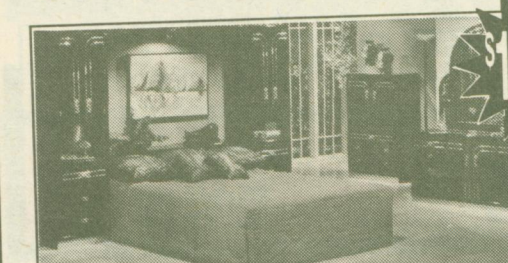
Sofa, Love Seat and Chair, 3 pce. Choice of fabric. Reg. \$999. \$100 Extra for Sofa Bed. **\$699**



Original French Provincial, 3 pce. Sofa, Love Seat and Chair. Reg. \$1,899. Display model **NOW \$1299**



Brass finish Headboard, Footboard, double size bed, 30 yr. warranty. Extra Firm Mattress and Box Spring. **VERY SPECIAL AT \$399**



Ashley Bedroom Suite, complete. Does not include Mattress & Box Spring. Reg. \$2499. **NOW \$1599 ONE WEEK ONLY!**

SPECIAL!
 Any size headboard and footboard, brass plated, or any other colour starts from **\$99.99 in stock only.**

SPECIAL!
 Good Quality Day Bed
 - Complete orthopedic mattress and spring Reg. \$299
NOW \$199

Free... Delivery within 20 km. with any purchase of \$400 and up.
GEORGETOWN MARKETPLACE 873-4732