

# 19 YEARS OF SERVICE & SUCCESS

**SOLD**  
 ARTHUR P. JOHNSON & ASSOCIATES LTD., REALTOR  
**877-5165**  
 24 HR. PAGER

Tor. **874-3040**  
 Res. **873-6146**  
**877-5165**  
 \* Sales Rep.



**SANDRA NAIRN\***



**REDUCED!**

**BLUE JAYS ABOUND**

1 1/2 sunny secluded acres, spacious and open 3400 sq. ft., huge family rm. with fireplace - many skylights and walkouts - quality windows - energy efficient heat pump - large games rm. - 10 mins to 401 - it's gorgeous. Call Sandra Nairn\*. 92-2-264



**SPACIOUS & GRACIOUS**

Quality appointments throughout this impeccable home - main floor family room & fireplace - 1 1/2 baths - quality broadloom, gorgeous hardwoods - w/o from fabulous kit. to deck & totally private treed & hedged yard - now \$219,900. Call Sandra Nairn\* 92-2-426



**SUPER BUY!**

Updated, immaculate bungalow with fireplace, country kitchen, quality ceramics, new bathroom, bright rec room with woodstove, 4th bedroom and office. Call Sandra Nairn\*. —Hurry! 92-2-537



**ESTATE DEVELOPMENT**

3,000 sq. ft. beauty - main floor family room and office, gourmet kitchen with Jennair, jacuzzi in master bedroom, french doors, large bright windows. \$369,900. One of Georgetown's finest. Call Sandra Nairn\* 92-2-511

## SWEETHEART SALE

# Strategic plan 18 months in the making

The results of an 18 month planning process were released this week by the Regional Municipality of Halton and the Halton District Health Council. The report, Strategic Plan for Health and Social Services for Persons with Physical Disabilities in Halton Region, defines the community vision for the service system of health, social services and related services for persons with physical disabilities. Two years ago, Halton Region and the District Health Council collaborated on a similar project for seniors. As the province moves to expand long term care services directed to the physically disabled and seniors, Halton Region has now done much of the planning work that will enable the community to identify priority areas for program development and expansion.

this region. The next phase of the study examined the services in the Region, what was working well and what needed to be improved. The Committee surveyed 89 agencies, held interviews with local service providers and representatives of government and disabled advocacy groups from Halton and Ontario. To obtain input from disabled persons and their caregivers and review key findings of the study, the Committee hosted 12 focus groups in the spring of 1992. There were additional community meetings in November in each municipality to obtain feedback on the key directions and recommendations. Over 150 consumers, family members and caregivers participated in these meetings.

The scope of the study included all physical disabilities caused by injury, at birth or by illness, including visual, speech and hearing impairment, paralysis or amputations, and/or reliance on a wheelchair, dog guide or other assistive devices.

In conclusion, the report identifies four key strategic directions: increasing the participation of disabled persons and their caregivers in the planning process and service delivery system, simplify access to services, close identified gaps in the service system and evaluate and monitor the implementation of this plan.

A Steering Committee of persons with physical disabilities and family members and service providers was established to guide the study. The management consulting firm of Ernst and Young was hired to conduct the study. Funding for the study was obtained from the Provincial Government through the Halton/Peel Long Term Care office.

The next stage will be the development of an implementation plan to incorporate the 14 recommendations identified in the Strategic Plan.

The Committee began this study by looking at the demographics of the disabled in Halton which indicated that there are almost 11,000 persons with physical disabilities in

Copies of the report and further information can be obtained from the following:

Halton District Health Council 842-2120 or Zenith 40340; Halton Region Health Department, Home Care Division 639-5141; Halton Region Social Services Department Community Services Division 825-6000.

# LOFTY LOCATION / EARTHY PRICE

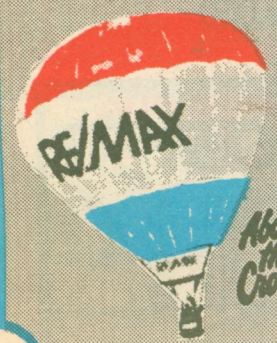
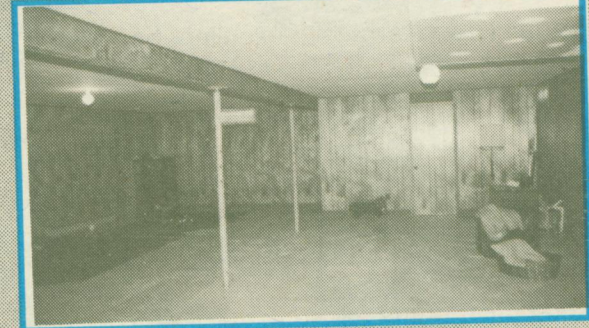


- Country size property: 183' x 440'
- Scenic hilltop location
- Spacious living/dining area: 27' x 23'
- Cathedral ceilings - bright rooms
- Sunny main floor family room
- Sun room with country views: 16' x 15'
- Massive rec room: 32' x 26'
- Stone exterior with attached garage



Offered for sale at  
**\$229,000**

Contact Allan Chabassol\*\*\* at 519-853-2086



**RE/MAX**  
 Blue Springs Realty  
 (Halton) Corp.  
 2 Mill Street East  
 ACTON

## VACANT LAND FOR SALE

2.5 acres	Country Corner Lot	\$79,000
1.3 acres	In Estate Subdivision	\$165,000

**ALLAN CHABASSOL**  
 Broker/Owner\*\*\*  
 Bus. 519-853-2086  
 Tor. 416-874-3053  
 Res. 519-853-4114

