



The Palette and Pencil Club opened their annual show at The Gallery in the Cultural Centre, Wednesday night. Show Coordinator, Dorothy Hart, left, and Club President, Shirley Brambley, were very pleased with the turnout. The show will continue until Feb. 21.

Photo by Laura Salverda

**PROVEN  
PERFORMANCE  
SOLD**

**ARTHUR F.  
JOHNSON &  
ASSOCIATES  
LTD., REALTOR**

877-5165

874-3040

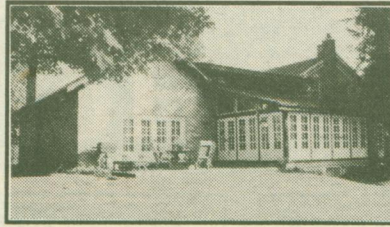
833-9714  
Erin

Tor.  
873-0655  
Res.

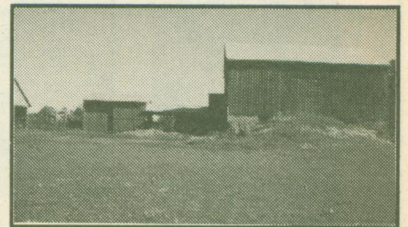
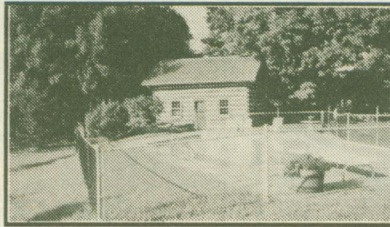


**MARTHA SUMMERS**  
Sales Representative

**CALEDON ESTATE PROPERTY**

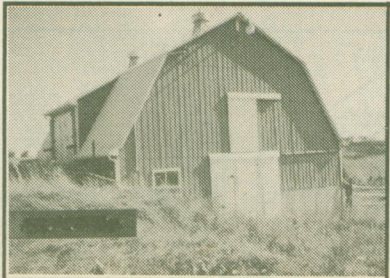


- 1868 Stone Residence
  - Board & Batten office building
  - Log Cabin relocated from Georgian Bay
  - 8 Stall Bank Barn with 3 utility buildings
- 64 gorgeous Caledon acres in an area of estate properties.

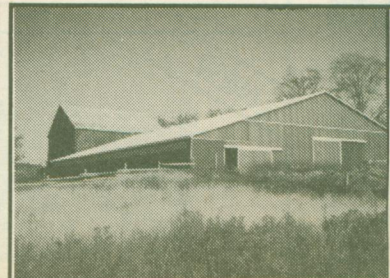


92-2-288

**HORSE COUNTRY**



**BRUCEDALE  
\$359,000**  
74 acre working farm, with 32' x 26' utility building with refrigeration unit plus 55' x 34' implement bldg. with concrete floor. Family home with country kitchen and long views. 92-2-474



**ERIN 89 ACRES  
\$589,000**  
WANT TO START YOUR OWN BUSINESS? Horse farm with indoor arena, sand ring, 38 stalls. CENTURY STONE HOUSE is a bonus. Well worth looking at. 92-2-485

**A TASTE OF COUNTRY**



**CALEDON EHS  
\$249,000**  
Original farmhouse tastefully redone with today's conveniences. Bleached oak kitchen, finished loft with dormer, private location south of King St. 92-2-495



**ERIN  
\$229,000**  
Country charm and value featuring open concept with lots of light, solarium type kitchen, marble in ensuite and walkout from master to large deck. 92-2-281

**HOBBY FARMS**



**ERIN  
10 ACRES  
\$249,000**  
Rolling land, located south of Erin Village, 3 bdrm. home, 2 stall barn, paddocks 92-2-275



**ERIN  
5 ACRES  
\$239,900**  
4 bedrooms, finished pine rec. room, pine kitchen, separate dining room, 5 stall barn & paddocks 92-2-459

**GEORGETOWN**



**\$152,900**  
Don't hesitate, hardwood floors, finished rec room, neutral decor, double driveway, large fenced mature yard, large deck - worth seeing! 93-2-114



**\$179,000**  
Great starter - live upstairs, rent out the lower level until you need the space. 2 yards, separate double car garage. Home filled with custom pine inside. 92-2-526

**COUNTRY VALUE**



**MILTON'S EDGE  
\$524,000**  
30 private acres with executive home with sun-room, hot tub, security system and 40 x 60 utility building 92-2-510

Adjoining 4.4 acres \$125,000. Private treed lot located south of Hwy. 7 west of Acton. 92-2-509

**CALEDON PRIME INVESTMENT**  
\$1,400,000. Vendors want to sell 49 acres adjacent Mistywood Subdivision, corner property with frontage on Hwy. #24. 93-2-122

**CALEDON - \$298,000**



1 ACRE with long views, reclaimed brick fireplace, oak staircase to full lower level with walkout. Ceramics in kitchen and bathrooms. Shows beautifully. 92-2-420

**ERIN - \$629,000**



This home and property speaks for itself. 58 acres of variety. Quality custom designed and built stone and stucco home with incredible views, 4 levels, wraparound deck and all you will ever need. 92-2-548



Member of Re/Max 100% Club

**HEATHER (WHITING) SCOTLAND**

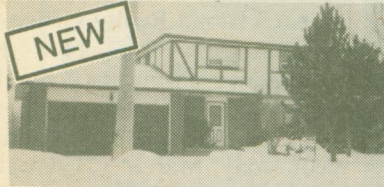
Associate Broker\*\*  
Bus. 853-2086  
Tor. 874-3053

**5 BEDROOM FARMHOUSE ON 68 ACRES**



This nearly new brick home features bright, spacious rooms, parquet and ceramic flooring and neutral decor. Good outbuildings, fenced pastures and a pond, all just minutes from town. Call HEATHER (WHITING) SCOTLAND\*\* 853-2086 RMAC92-45 \$479,900

**EXECUTIVE ON THE RAVINE \$199,900**



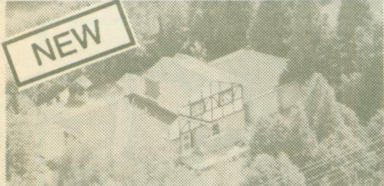
This Tudor styled 4 bedroom home features a spacious main floor family room addition plus an indoor pool, sauna and exercise room. A must to view. Call HEATHER (WHITING) SCOTLAND\*\* 853-2086. RMAC93-08

**"THE FARM HOUSE" - REVISITED \$309,900**



Nostalgia and warmth radiate from every nook and cranny of this wonderful country estate home. Some of the superb renovations include pine paneled wainscoting, beamed ceilings, french doors, original woodwork and brick fireplace. Come back to yesteryear. Call HEATHER (WHITING) SCOTLAND\*\* 853-2086 RMAC93-07

**COUNTRY TUDOR WITH STONE \$229,900**



Surrounded by trees and privacy, this 4 bedroom home features a beamed country size kitchen with pine floors and stained glass; 2 fireplaces, sunken jacuzzi and finished basement with a 5th bedroom, den, 4 pc. bath and 'Tudor Pub' rec room. Hurry on this one. Call HEATHER (WHITING) SCOTLAND\*\* RMAC93-12

**COUNTRY LIVING WITH CITY CONVENIENCE \$429,000**



Mature treed lot, custom builder's own home, suitable for the extended family. Call HEATHER (WHITING) SCOTLAND\*\* at 853-2086. RMAC92-79

**VACANT LAND**

- 10 acres, treed, escarpment (Halton) \$109,900
- 12 acres, rolling (West Garafraxa) \$109,900
- 22 acres, qualifies for severance (Erin) \$129,000
- 97 acres, recreational on highway (Halton) \$389,900

Please call Heather (Whiting) Scotland\*\* (519) 853-2086