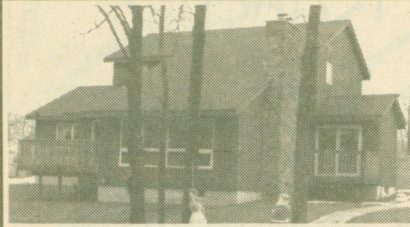


"BILL'S PICK OF THE WEEK"



COUNTRY AS YOU LIKE IT!

A manageable, square two acres with timbered frontage. 2,500 sq. ft. luxury living in this two year new home. Gourmet kitchen, sunken living room, complete climate control, warm Berber carpet everywhere. Exceptional at \$249,900. CT92-033



BILL ELLIS, Associate Broker

Office: 877-9500

Residence: 877-7528

OVER 20 YEARS EXPERIENCE IN REAL ESTATE



CANADA TRUST
Canada Trust Realty Inc./Realtor

PROVEN PERFORMANCE SOLD

ARTHUR F. JOHNSON & ASSOCIATES LTD., REALTOR



MARTHA SUMMERS
Sales Representative

877-5165 874-3040
Tor.

833-9714 873-0655
Erin Res.

ERIN - \$229,000



Country charm and value featuring open concept with lots of light, solarium type kitchen, marble in ensuite and walkout from master to large deck. 92-2-281

CALEDON EHS \$249,000



Original farmhouse tastefully redone with today's conveniences. Bleached oak kitchen, finished loft with dormer, private location south of King St. 92-2-495

GEORGETOWN - \$152,900



Don't hesitate, hardwood floors, finished rec room, neutral decor, double driveway, large fenced mature yard, large deck - worth seeing! 92-2-114

CALEDON - \$419,000



Value for location. 25 acres on King St. West of Hwy. #10 with 715' frontage. Ceramics, whirlpool, country oak kitchen, finished rec room with woodstove and ainscotting. 92-2-424

CALEDON - \$298,000



1 ACRE with long views, reclaimed brick fireplace, oak staircase to full lower level with walkout. Ceramics in kitchen and bathrooms. Shows beautifully. 92-2-420

ERIN - \$629,000



This home and property speaks for itself. 58 acres of variety. Quality custom designed and built stone and stucco home with incredible views, 4 levels, wrap-around deck and all you will ever need. 92-2-548



Marvyn Morgan**

RE/MAX BLUE SPRINGS Realty (Halton) Corp.

Bus. 853-2086 Tor. 874-3053

Res. 873-2862

Member Computerized Relocation Network



\$189,900

1 ACRE COUNTRY

Walkout basement, inground pool, double garage, circular driveway. Call Marvyn Morgan** at 853-2086 or 873-4937. RMAC92-74



\$169,900

HUGE 5-LEVEL HOME ON OUTSKIRTS OF ACTON

Backs onto open fields. This gigantic family home offers all the space you need! There's even a craft room with sink, two walkouts to lot, family room with fireplace and 2 washrooms. Add to these features a high efficiency furnace and central air conditioning and this home is a must to see. For more information, call Marvyn Morgan** 853-2086 or 873-4937. RMAC92-95



COUNTRY ATMOSPHERE LOCATED IN GEORGETOWN - \$164,900

Come look at this charming 3 bedroom bungalow on nearly 1/2 acre. Walkout from modern kitchen to patio. Call Marvyn Morgan** 853-2086 or 873-4937. RMAC92-89

Looking for land on Manitoulin Island?

\$69,900

for over 90 acres with lake front.

Call Marvyn Morgan 853-2086 or 873-4937.

THINKING REAL ESTATE? CALL MARVYN MORGAN**

ERIN 89 ACRES \$589,000



WANT TO START YOUR OWN BUSINESS? Horse farm with indoor arena, sand ring, 38 stalls. CENTURY STONE HOUSE is a bonus. Well worth looking at. 92-2-485

ERIN 10 ACRES \$249,000



Value for country dollars. Located south of Village with 3 bedroom home, finished rec room, main floor laundry, barn & paddock for your horses. 92-2-275

ERIN 5 ACRES - \$239,900



This is the year to keep your horses at home. 5 acres, 5 stalls, hardwood bush to ride through. 4 bedroom family home with pine rec room. 92-2-459

BRUCEDALE - \$359,000



74 acre working farm, with 32' x 26' utility building with refrigeration unit plus 55' x 34' implement bldg. with concrete floor. Family home with country kitchen and long views. 92-2-474

MILTON'S EDGE - \$699,000



Just west of Acton, south of Hwy 7, exceptionally private executive home on 34 rustic acres. 40 x 60 utility building. PRICE INCLUDES 4.4 ACRE SEVERANCE. 92-2-510

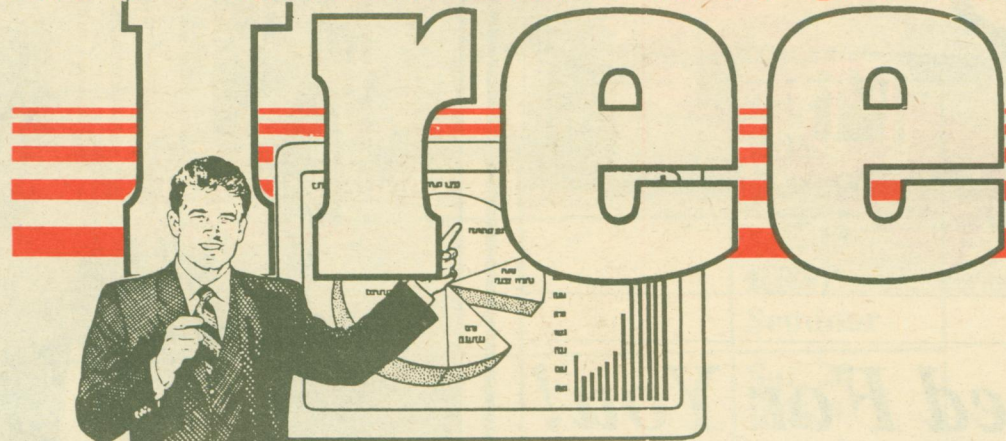
CALEDON PRIME INVESTMENT

\$1,400,000. Vendors want to sell 49 acres adjacent Mistywood Subdivision, corner property with frontage on Hwy. #24. 93-2-122

MILTON'S EDGE - 4.4 ACRES

Located south of Hwy. 7, west of Acton, pretty, private, treed lot. Excellent location. 92-2-509

FINANCIAL PLANNING SEMINAR



Wednesday, January 20, 1993

John ELLIOTT SEMINAR SPACE FILLED Theatre, Georgetown

NOTICE

Due to the tremendous response, SunLife will be running a second seminar on Tuesday, January 26 7:30 pm at the John Elliott Theatre Georgetown. - CALL TODAY -

Sponsored by Agents of



- Harry Gregg
- Rick Dixon
- Cary Kreuzwiesner
- Alec Munro

PLAN TO ATTEND

Our agenda will include simple solutions to your complex problems

- how the new RRSPs rules affect you
- understand the new RRIF rules
- will you outlive your savings
- annuities - advantages - disadvantages
- ensure your RRSP funds are in the best type of investment
- how can you reduce the effect of taxes
- the strength and security of Sun Life

For information and reservations call

416-873-7324

Georgetown
416-626-3004
Toronto