

Real Estate THIS WEEK

SERVING GEORGETOWN, ACTON, EDEN MILLS, ROCKWOOD, ERIN, HILLSBURGH AND AREA

Vol. 1, No. 15

WEDNESDAY, SEPTEMBER 30, 1992

8 PAGES

(416) 873-2254

PUBLISHED WEEKLY BY "HALTON HILLS THIS WEEK"

24 HR. FAX 873-3918

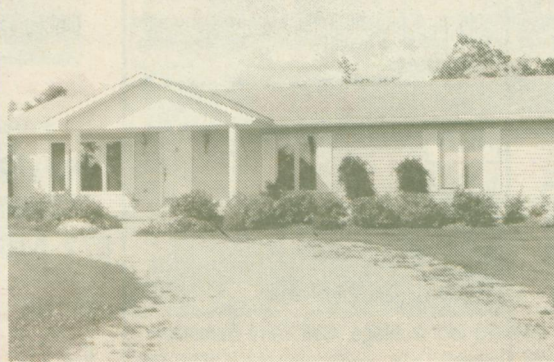


**10 ACRES
SECLUDED
RETREAT - \$219,000**

After walking 10 gorgeous acres, relax by the fireplace while taking in panoramic views of the countryside. Attractions include sauna, year round spring-fed pond and deer roaming in your backyard.

RMRW92-22

Call KEN JESSOP* at (519) 856-4348
RE/MAX BLUE SPRINGS REALTY (HALTON) CORP.



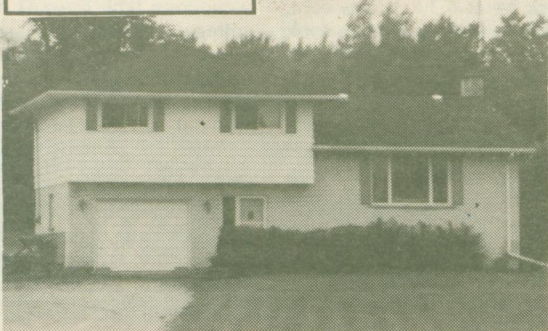
**IT'S JUST
A GOOD BUY!**

Immaculate 3 bedroom on landscaped acre lot. French doors to 1000 sq.ft. 3 level deck. Large insulated basement. Close to "GO". Asking \$208,000.

91-449

Call LARRY BARNSTAPLE* at 877-5165
ARTHUR F. JOHNSON & ASSOCIATES LTD., REALTOR

OPEN HOUSE



**SUN. OCT. 4,
2 - 4 p.m.**

\$245,000. 5 acre Hobby Farm with 4 bedroom home in excellent repair and 5 stall barn. 5 Sideroad Erin between 8th and 9th Line.

92-2-397

Call MARTHA SUMMERS* at 877-5165
ARTHUR F. JOHNSON & ASSOCIATES LTD., REALTOR

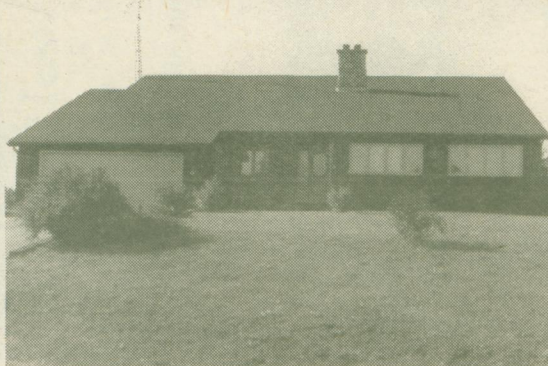


**LOCATION,
LOCATION,
LOCATION
\$179,900**

Lakeview subdivision, mature landscaped lot, only a stone's throw from the Lake. Nice open concept kitchen area plus large main floor laundry room.

RMAC92-83

Call ALLAN CHABASSOL*** at 853-2086
RE/MAX BLUE SPRINGS REALTY (HALTON) CORP.

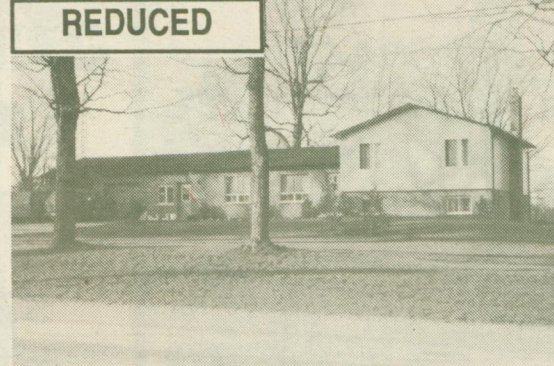


**REDUCED TO
\$234,900**

Spectacular view Eden Mills Estates. High ceilings, large bright rooms, family rm. (31' x 15') with fireplace & walkout. Large 501 deck overlooking countryside. Privacy & room to roam on this 1 acre Est. Lot.

D92-132

Call SUZANNE ROBERTSON* OR MICHELE DAWE* at 853-3790
GORDON B. DAWE REAL ESTATE BROKER



REDUCED

**\$259,900
JUST FOR YOU**

This 4 year old home located 3 miles from Acton and 14 miles by Hwy. 25 to the 401 is placed on 4.86 acres of rolling land. A lovely mature setting with maples across the front and mixed bush to the rear and an 80 ft. pond. Open concept of 2 x 6 construction with R20 walls & R40 ceilings the home is tasteful & a pleasure to view.

RCG-46

Call WAYNE SAUNDERS* at 519-824-9050
ROYAL CITY REALTY (GUELPH) LTD.



**GARAGE &
WORKSHOP
1600 SQ. FT. HOME
FOR \$169,000**

Can you ask for any more?? Yes you can. Try a walk-up attic, plenty of cupboards, 1/2 acre lot, 200 amp service, air conditioning, heat pump, main floor laundry, hardwood floors and paved drive. Do yourself a favour and drive by Hwy. 24 at Bruceedale. RR#081

Call ORVAL GATES*** at 519-856-1212
ORVAL S. GATES REAL ESTATE BROKER



OPEN HOUSE

**\$339,900
BUILDERS
CLEARANCE**

3800 sq ft, triple car garage, hardwood floors, main floor den, 4 bedroom, plus a Bonus Room! Come & view this home during site hours

- Sat. Oct. 3 10-5
- Sun. Oct. 4 10-5

Patrick Drive, Erin, one mile east of Trafalgar on Hwy. #24

Call SCOTT GILMOUR* at 1-416-858-3434
RE/MAX REALTY SPECIALISTS INC., REALTOR

* Sales Rep

** Associate Broker

*** Broker/Owner

SHOP THE LIGHTS *Fantastic*
**LIVING
LIGHTING**
GEORGETOWN
245 Guelph St. (416) 873-2996

\$10⁰⁰ OFF* any
BREW at the
**Brew
FACTORY**
Beer 1/2 price
332 Guelph Street
Georgetown 416 873-BREW
*until October 21, 1992 with this ad

**GEORGETOWN
WOODWORKS LTD.**
247 ARMSTRONG AVE.
Cabinetry & General Millwork
KITCHEN CABINETS
Stairs & Railings Bathroom Vanities
Custom Furniture
Renovations & Additions
877-5746

**HOME
INSURANCE?
CALL**

West Insurance Ltd.
8 Wesleyan St., Georgetown 877-5113
1A Spring St., Erin 833-7280