

Nick Lorito
Sales Rep*

877-5165

24 hour pager

833-9714

Erin

**"WORKING TWICE AS HARD FOR YOU"
WORKS!!**

ARTHUR F.

**JOHNSON &
ASSOCIATES
LTD., REALTOR**

877-5165

24 hour pager

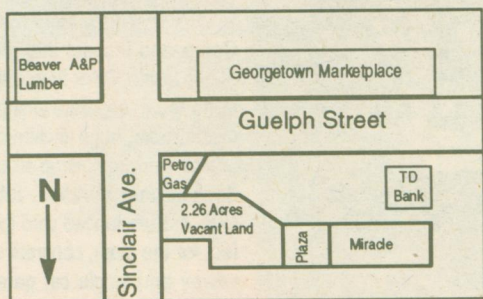
874-3040

Toronto



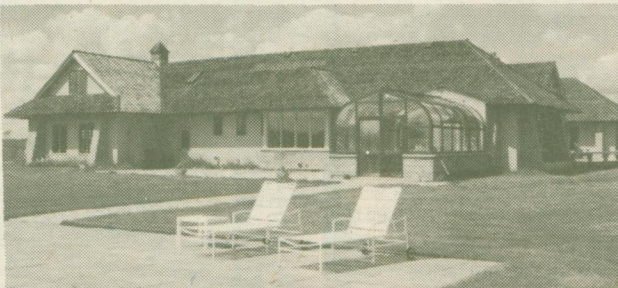
Tom Comery
Sales Rep*

DEVELOPMENT SITE FOR SALE - \$399,900
2.26 acres, M2 zoning



Available Services: hydro, water, sanitary sewers and natural gas. This rare piece of property has potential for some commercial uses. Ideally located steps from Guelph St. (#7 Hwy) and new Georgetown Mall. Contact Nick Lorito* for further information. 92-2-295

HIGH ON A HILL



Sits this grand & magnificent residence on 98 acres with a million dollar view. Quality materials used throughout, cherry wood flooring, custom wood doors, hand rubbed oak paneling, stained glass kitchen cabinetry and much much more. This quality built home is offered at \$895,000. Call Tom Comery* at 877-5165 92-2-406

ERIN HORSE COUNTRY



Superb and satisfying 38 acres with hardwood bush, large trout pond and paddock with 3-box stall barn. Quality built 3 bdrm. coach house. Excellent location, close to schools and shopping. \$349,000. Call Tom Comery*

"ERIN COUNTRY BUNGALOW"



A comfortable & spacious 3 bdrm. home on 1 acre with floor to ceiling stone fireplace, pine panelled dining room, huge rec room with wood insert, a 4th bedroom & walkout to rear garden. Only 30 minutes to Brampton. Call Tom Comery* for details. \$239,000. 92-2-198

**NEW PRICE
\$141,900**

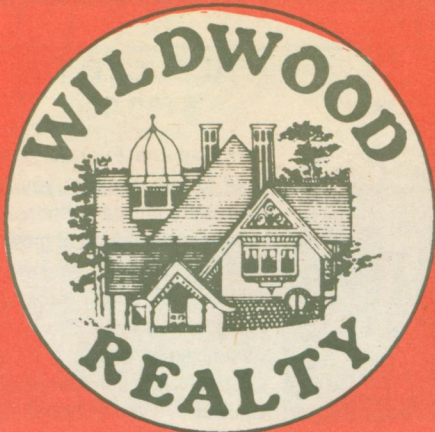
Priced to sell. 1200+ sq. ft. of desired model, florida ceiling in kit, modern cupboards, appls., solarium, off bdrm. and l.r. Tastefully decorated, bright and cheerful. All facilities, u/g parking, well priced. Call Nick Lorito*

COUNTRY LIFE



Raised 4 bdrm. bungalow overlooking rolling farmland. Paved road. Living/dining with cathedral ceiling and fireplace. New kitchen. New shingles. Windows by Pella. Master with Vermont casting. Value packed price of \$210,000. Call Tom Comery*.

CALL NICK OR TOM FOR MORE INFORMATION ON THESE PROPERTIES!

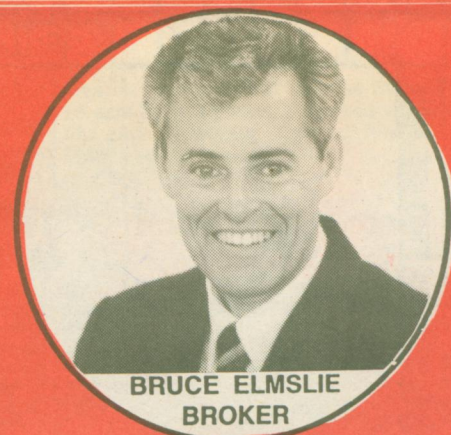


**WILDWOOD
REALTY INC.**

GEORGETOWN OFFICE

~ 454-8706 ~

~ 873-4321 ~



BRUCE ELMSLIE
BROKER



MARY GOEBEL
Sales Rep.
Res. 877-2429

DAVE SOAL
Sales Rep.
Res. 873-3999

TRICIA (SAUNDERS)
LOMAX
Sales Rep.
Res.
416-873-6329

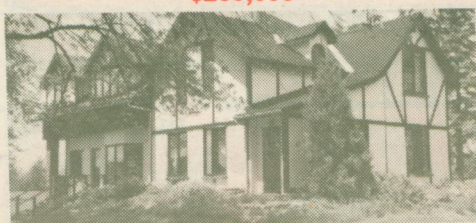
**\$124,900
PARKLIKE SETTING**

REDUCED



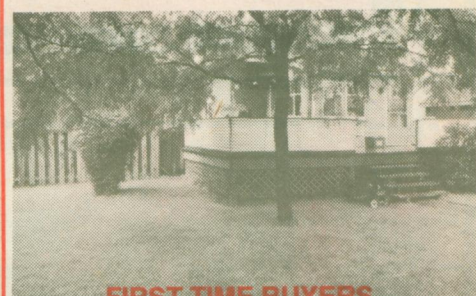
for this end unit townhouse. Spacious rooms, separate dining room, walkout from living room to private patio, 2 baths and finished basement. Want to know more?? Call Bruce. \$124,900. WW-191

OOZING WITH CHARM & CHARACTER
\$269,000



For this enchanting 3,000 sq. ft. English Tudor home on 100 beautiful acres, 15 acres mixed bush, and 1/2 acre pond. 1810 log house, huge workshop/garage, 4 bedrooms, library and sun-room. To view this exceptional home call Tricia Saunders, Sales Rep. at 454-8706 or 873-6329. WW-182

\$149,900



FIRST TIME BUYERS...

Come and inspect this great family home. Brick fireplace in living room, separate dining or music room, huge kitchen and master bedroom, wrap around deck, 2 sun porches, fabulous, mature fenced yard (perfect for the kids), concrete driveway and single car garage - Better Hurry!!! Call Dave now!! 873-3999. WW-192

**2 ACRES - "CALEDON"
PARKLIKE SETTING
STREAM AND POND**



Pretty home with big, bright windows, finished pine family room with stone fireplace. Located just North of Brampton, close to #410. You'll never find a better paradise than this!! Ask for Bruce - \$235,000. WW-189

**COSY
STARTER HOME...**



BRING YOUR CHEQUE BOOK...

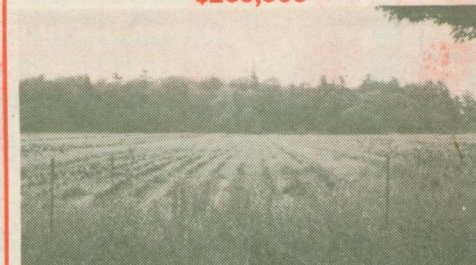
YOU'LL SAY "YES" TO THIS CHARMING HOME...great features like air conditioning, new windows, wood burning fireplace in living room, new kitchen cupboards, 3 good size bedrooms, gorgeous family room and spotlessly clean. Extra deep fully landscaped fully fenced property. Flexible closing date. Ask for Bruce. \$155,900. WW-183

SPOTLESS - \$149,900



4 YEAR OLD CUSTOM BUILT RAISED BUNGALOW
Big bright rooms, skylight in main bathroom, 3 good size bedrooms, full basement with separate entrance (ideal in-law situation). Parking for at least 8 cars. Better hurry!! \$149,900. Call Bruce. 454-8706. WW-181

**13 WOODED ACRES
\$250,000**



Edge of town - surrounded by Sheridan Nurseries. Fabulous property to build your country estate. Call Bruce for more details. WW-178

"IT'S A BAD DAY WHEN WE HAVEN'T HELPED A CLIENT"