

ENNISCLARE WOODS

Ennisclare Woods is a prestigious rural community that falls within the protected rural ambiance of the Niagara Escarpment yet is within the greater Toronto area. This community is professionally designed for 29 exclusive homes on 200 magnificent Niagara Escarpment uplands. Each lot includes a share of 90 acres of common lands providing riding and walking trails, recreational facilities and beautiful woodlands.



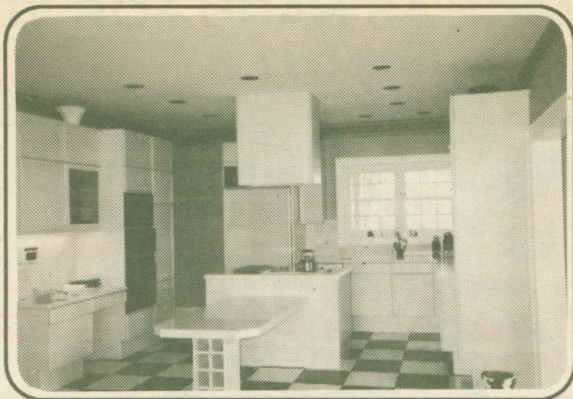
4265 ENNISCLARE DRIVE

This home is modelled on a 19th century museum located in Green Park National Park, Prince Edward Island. Three storeys, plus the widows walk, this 5400 sq. ft. home is spectacular. Home is located on 2.67 elevated acres with superb views of the surrounding countryside.

** \$40,000 landscaping package with this property to the purchaser's own design.

Highlights of this Home

- A (9.45m x 4.50m) Poggenpohl kitchen with beautiful 18 inch imported European ceramic tiles
- Top quality built in appliances
- There are five bathrooms, a 6 pc, two 4-pcs, a 3 pc and a 2 pc, two- five foot jacuzzi's
- There are 6 bedrooms - two with ensuites
- Master bedroom is 9.45m x 4.55m
- Ceiling heights range from 24' high in family room, 10' high in living room and 9' high everywhere else. Some ceilings are pickled pine tongue and groove



- Staircase is 48" solid maple with oversized spindles all handturned and assembled
- 120 year old 1" maple floors
- Granite floors in downstairs powder room and entry hall
- A 4.56m x 4.56m soundproof music room
- Sunken Living Room
- Exterior is wrapped with tyvec wrap and then sided with Champlain V-lock. Guaranteed 40 yrs.
- 50 oz. broadloom with high density 1/2" underpads
- Roof is 5/8" x 7-1/4" taper sawn, top grade cedar shingles



This home is beautifully and tastefully decorated.

For further information or to view this magnificent home, call Kathy Ellis or John Hill, Sales Reps.



KATHY ELLIS
Res. 877-2725



JOHN HILL
Res. 877-8402

Bus. 873-0300
Tor. 874-3048



NRS BRAND REALTY INC., REALTOR

SEE US FOR BUSINESS OPPORTUNITIES



RETAIL / OFFICE

If you are considering a new business venture in the Rockwood area, this could be your best opportunity to get it going. Rent or lease based on your income or have your office furniture supplied with your rent. Maybe share support staff with another business. Bring me your ideas and we will try to accommodate them. Space as little as 150 sq. ft. up to 3,000 in a prime location. \$\$ negotiable. Call Orval S. Gates at (519) 856-2207. RR#69

ORVAL S. GATES, REAL ESTATE BROKER



INVESTMENT OPPORTUNITY \$449,000

This commercial building has a 1 bedroom apartment plus other rental space for added income. For details call PETER HRKAC or JACKIE GREENWOOD, Sales Reps. at 877-5211. RM090-92

RE/MAX SUBURBAN (91) INC.



INDUSTRIAL/POTENTIAL RESIDENTIAL \$450,000

Currently 18,000 sq. ft. M-1 industrial building. Excellent location for infill redevelopment to higher density residential. For more particulars on the many opportunities this property offers please call HEATHER (WHITING) SCOTLAND** 853-2086. RMAC92-50

RE/MAX BLUE SPRINGS REALTY (HALTON) CORP.

ARE YOU LOOKING FOR A PLACE FOR YOUR BUSINESS?

These realtors can help you locate a commercial property to suit your needs!



LIVE AND WORK HERE - \$299,000

This recently renovated and upgraded 3 bedroom home with metal clad workshop and highway frontage enjoys M-2 industrial zoning. Just think of the possibilities and call HEATHER (WHITING) SCOTLAND, Associate Broker at 853-2086. RMAC92-77

RE/MAX BLUE SPRINGS REALTY (HALTON) CORP.



COMMERCIAL BUILDING

On Hwy. 25 Hillsburgh - 3 year old free standing brick building. Contains 1,000 sq. ft. showroom, 900 sq. ft. office and storage area, as well as a two bedroom apartment. Call NORINNE KILGOUR, Sales Rep. for further particulars 877-5211 or Res. 519-855-4214. RM281-91

RE/MAX SUBURBAN (91) INC.