

MORE SAFETY ZONES ON THE WAY AFTER SPEEDING STUDY

HERB GARBUTT
hgarbutt@metroland.com

The Town of Halton Hills will triple the number of community safety zones, adding eight more before the end of the year.

Community safety zones are designated where "public safety is of special concern", with most being near schools. Speeding fines are doubled in community safety zones.

Halton Hills currently has four existing community safety zones on Delrex Boulevard, Mountainview Road South and Maple Avenue in Georgetown and Mill Street West in Acton.

THE NEW COMMUNITY SAFETY ZONES WILL BE LOCATED AT:

- Churchill Road North

between Tanners Drive North and Peel Street (Mackenzie-Smith Bennett Public School)

- Maple Avenue between Mountainview Road North and Guelph Street (Dominion Gardens Park)

- Miller Drive between Eighth Line and Argyll Road (St. Brigid Catholic Elementary and Sacre Coeur Catholic Elementary Schools)

- Barber Drive between Argyll Road and Niagara Trail (St. Catherine of Alexandria Catholic Elementary School)

- Danby Road between Barber Drive and Silver Pond Drive (Ethel Gardiner Public School)

- Eaton Street between Forsyth Crescent and Chaplin Crescent (Silver Creek Public School)

- 15 Side Road between Trafalgar Road and Bel-

mont Boulevard, west intersection (Stewarttown Middle School)

- 22 Side Road between Fifth Line (east intersection and Elizabeth Street, Limehouse Public School)

Twenty-four sites, including the existing four, were studied for potential community safety zones. The two community safety zones studied on Miller Drive were combined into one.

The sites selected all had average speeds exceeding the posted speed limit by 10 km/h.

The town is also considering the use of automated speed enforcement in community safety zones.



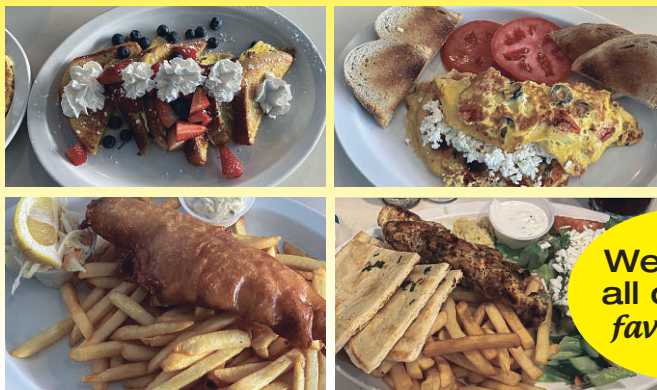
SCAN THIS CODE for more local news.



Metroland file photo

The Town of Halton Hills will add eight new community safety zones before the end of the year.

STOP IN WITH FAMILY AND FRIENDS FOR DELICIOUS, HOMEMADE CLASSIC DINER FOOD!



We make all of your favourites!

Available For
TAKEOUT • CURBSIDE • DINE-IN



Ask about our fabulous specials! **(905) 877-2511**
Summer Hours: Monday thru Sunday
8am - 3pm daily
154 Guelph Street, Georgetown

Our Staff specialize in making you smile! Hope to see you soon!

Locally Roasted Specialty Coffee Delivered to Your Door

100% Arabica
Direct from the Roastery



Buy online at **BLACKCREEKCOFFEE.COM**