




**Denise Dilbey**   
 Your Realtor® for Life  
 Broker Direct 416.919.9802

ROYAL LEPAGE  
**DIAMOND AWARD** RLP AWARD WINNING PERFORMANCE SINCE 2004  
[denise@link2realestate.ca](mailto:denise@link2realestate.ca)



### COUNTRY SPLENDOR • Erin

Peace & tranquility are offered in this stunning 6 bdrm, 6 bath beauty on more than 3 acres. This expansive home features heated bathroom floors, gorgeous kitchen & provides room for the entire family & entertaining friends. 4-season playground w/heated salt-water pool, pool cabana, and multiple outdoor lounging areas surrounded by trees. Just mins to the Elora-Cataract Trail for daily excursions throughout the year. Close to town, schools and shopping. **MLS \$2,885,000**



### FOR ROOMS WITH A VIEW • Meaford

Get ready to build your masterpiece on a stunning 2.8 acre lot overlooking Georgian Bay. This hilltop oasis features a meandering river and towering trees. Only minutes from the public dock slip & beaches. Close to Owen Sound in a neighbourhood of estate homes. Building envelope and survey available. Paved road. **MLS \$399,000**



### NATURE AT ITS BEST • AMARANTH

Ideally located just north of Orangeville, this peaceful 11.8 acre parcel of land offers you a little piece of heaven. Abundance of flora and fauna using the mixed forest as their playground. Driveway culvert provides access to the paved road. Zoned EP-1 & regulated area of NVCA. The buyer will be responsible for site plan applications. Hydro available. Subject to **HST. \$549,000**



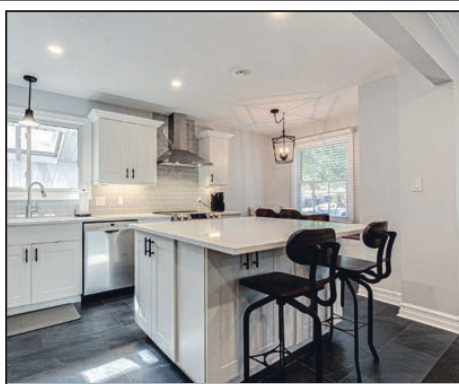
### RETAIL & OFFICE RENTALS • Halton Hills

Various opportunities to conduct business with various sized units available for office & commercial uses. Sizes range from 385 to 1,600 square feet, "move-in ready", to suit many needs and budgets. Many ground-level retail locations with high visibility and professional office space with inclusive leases in a growing community. Net + TMI leases.



### EVERYTHING IS DONE FOR YOU • WOODSTOCK

Move-in ready, reno'd, carpet-free, 4bdrm, 2bath on a secluded, quiet street close to parks & shopping. Open concept main flr w/brand new eat-in kitchen adjacent to living rm w/beautiful hrdwd. 3 generous-sized, upper lvl bdrms w/spa-like main bath & semi-ensuite to mstr. Fin'd lwr lvl boast 2 pc bath, spacious rec rm w/gas fireplace, 4th bdrm, office & spacious laundry rm. Fully fenced lrg backyard offers room to enjoy. Long paved drive for prkg. **MLS \$675,000**



### EXPANDING YOUR WEALTH IN COMMERCIAL REAL ESTATE

Wise investors know the value of diversifying and when to leverage their portfolio. Leveraging the current real estate market provides commercial and farmland properties options for those looking to increase their net worth while leveraging low-interest rates. For investors, there are plenty of solid commercial, residential, farm, and mixed-use real estate investments to help you grow your income. Call today to see how I can help you expand your wealth.

Contact me today 416-919-9802 Or [Denise@link2realestate.ca](mailto:Denise@link2realestate.ca)

### BE MARKETWISE! WHEN TO MAKE A MOVE?

According to the stats, the Seller's market continues to prevail with tight supply conditions driving up the benchmark price of real estate in Caledon, Erin and Halton Hills regions. No one has a crystal ball to forecast how and when the real estate market will change but realistically regardless of you being a buyer or seller, now might be the best time for your family to benefit on the opportunity to make a move. If you want a better understanding of the real estate market and how it affects you and your family's wealth, let me answer your questions and provide expert advice. Call today to let me know how I can help you.

