

NOTICE OF STUDY COMMENCEMENT

MUNICIPAL CLASS ENVIRONMENTAL ASSESSMENT STUDY

Norval West Bypass Transportation Corridor Improvements
Guelph Street (Highway 7) to 10 Side Road (Regional Road 10), including 10 Side Road from
Tenth Line to Winston Churchill Boulevard/Adamson Street (Regional Road 19), Town of Halton Hills
Our File: PR-2921B

Study

Halton Region is initiating a Municipal Class Environmental Assessment (Municipal Class EA) Study for the Norval West Bypass from Guelph Street (Highway 7) to 10 Side Road (Regional Road 10), including 10 Side Road from Tenth Line to Winston Churchill Boulevard/Adamson Street (Regional Road 19), in the Town of Halton Hills. The need for greater connectivity and mobility (to 2031) in the southeast quadrant of the Town of Halton Hills was identified in both the Halton-Peel Boundary Area Transportation Study (HPBATS) and the Region's Transportation Master Plan – The Road to Change.

A number of road improvement alternatives will be examined as part of this Municipal Class EA Study. Road improvements, such as active transportation, intersection operations, as well as structural, drainage, cross-sectional and natural environment requirements, will be assessed through the study.

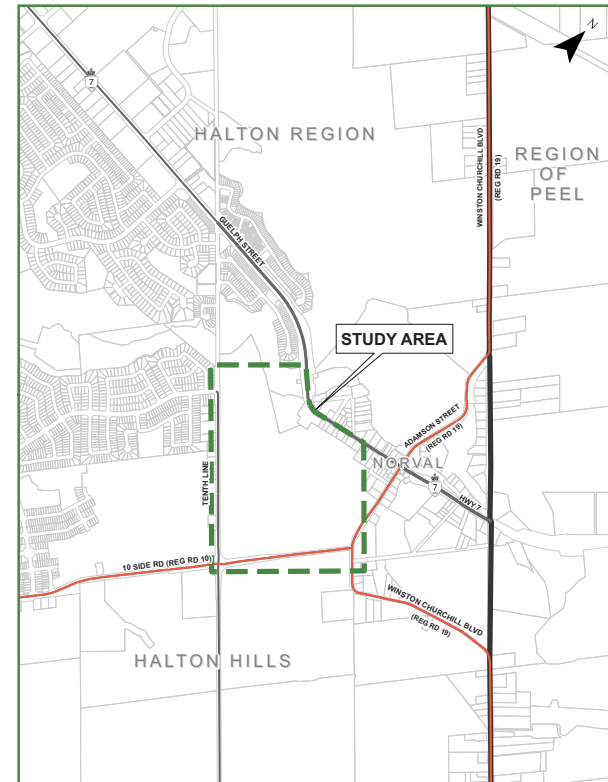
Process

This notice signals the commencement of the Municipal Class EA Study, which will define the problem, identify and evaluate alternative solutions, and determine a preferred solution in consultation with the Town of Halton Hills, regulatory agencies and the public. This study is being conducted in compliance with Schedule C of the Municipal Class Environmental Assessment (October 2000, amended 2007, 2011 and 2015), which is approved under the *Ontario Environmental Assessment Act*.

Public and review agency consultation is a key element of the Municipal Class EA process and input will be sought throughout this study. Details regarding forthcoming public consultation will be advertised as the study progresses. Upon completion of the study, an Environmental Study Report (ESR) will be prepared and placed on the public record for a minimum 30-day review period. The document will detail the planning and consultation process and the preferred alternative.

Comments

Comments received through the course of the study will be considered and documented in the Municipal Class EA Study Report. Additional information related to the study and consultation process may be obtained through the project webpage at halton.ca.



This notice was first issued on Thursday, January 23, 2020.

Jeffrey Reid, C.E.T., LET
Project Manager
Halton Region
1151 Bronte Road
Oakville, ON L6M 3L1
905-825-6000 ext. 7920
jeffrey.reid@halton.ca

Gordon Murray, P. Eng., PTOE
Project Manager
Stantec Consulting Ltd.
300 Hagey Boulevard
Waterloo, ON N2L 0A4
519-585-7358
gordon.murray@stantec.com

We want to hear from you!

Halton Region is asking residents to complete a short survey about our waste management programs. We want to learn more about how you stay informed about the programs and which ones you use regularly. To participate, you can:

- go to halton.ca/waste or use the OneHalton app;
- visit the Halton Regional Centre (1151 Bronte Road, Oakville) or the Halton Waste Management Site (5400 Regional Road 25, Milton); or
- email accesshalton@halton.ca or call 311.

Your input is valuable. Together, we can keep Halton a sustainable place to live now and for future generations.

Meetings at Halton Region, 1151 Bronte Rd., Oakville, L6M 3L1
Visit halton.ca for full schedule.




Gary Carr
Regional Chair

Feb 12

9:30 a.m.

Regional Council

 Please contact us, as soon as possible, if you have any accessibility needs at Halton Region events or meetings.