

# HALTON DISTRICT SCHOOL BOARD RECOGNIZES OUTSTANDING STUDENTS

**KEVIN NAGEL**  
knagel@metroland.com

Students from across Halton District School Board were recognized with Student Excellence Awards for demonstrating outstanding qualities in a number of areas.

Halton Hills' award recipients are as follows:

**Olivia Schofield**  
**Acton District High School**

Olivia has demonstrated leadership and success in academics, athletics and in the schoolwide community. She has been involved in sports teams, the music department, announcements and is a leader of the school's Bearcat crew.

**Sophia Aleristok**  
**Georgetown District School**

Sophia excels academically, maintaining a high average in the International Baccalaureate (IB) program. She is a Link Crew leader, peer tutor and, for the past two years, has attended the Ontario Student Leadership conference. She organizes social justice initiatives and performed as the lead in the musical Footloose.

**Jaime Barrows**  
**Centennial**

Jaime is an active member of Centennial Public School and the wider community. She is involved in band and sports, and strives for academic excellence in all subjects. Jaime is kind, considerate, helps her peers and actively participates in class discussions.

**Benjamin Gauntley**

**Ethel Gardiner**

Benjamin exudes positivity and charisma. He is kind, respectful and considerate. Benjamin participates in Drama Club, the school play, band, badminton, basketball and plays soccer. Elected as Ethel Gardiner Public School's student parliament deputy prime minister, Benjamin takes the responsibility seriously.

**Evan Doyle**  
**George Kennedy**

Evan is an enthusiastic, polite and kind-hearted member of the George Kennedy Public School community. He is an active participant in extra-curricular activities including the We Ambassadors Group, cross country, intramural sports, Right To Play Junior Leaders, and track and field. Evan maintains high academic standards and aspires to become a brain surgeon.

**Timothé Strout**  
**Glen Williams**

Timothé is an exemplary leader and role model who consistently demonstrates care and compassion toward others. He is an active and enthusiastic participant, including cross-country, intramural activities, volleyball, track and field, and library crew. Timothé has garnered admiration for his academic achievement, strong work ethic, cooperative nature, quiet strength and humility.

**Albert Smetana**  
**Harrison**

Albert is a responsible, motivated and passionate

student who excels academically and socially. Albert pays close attention to details and ensures his quality work is accurate. He is kind, caring and compassionate toward all, makes good choices, demonstrates sportsmanship and a willingness to try new things.

**Owen Shannon**  
**Joseph Gibbons**

Owen is a caring and welcoming student who always has a smile on his face and a positive attitude. He is an outstanding leader who sets and meets high goals for himself. He works hard academically, always persevering and looking for ways to improve. Owen helps create a positive and inclusive environment and treats everyone with equity, dignity and respect.

**Alisha Volkes**  
**Limehouse**

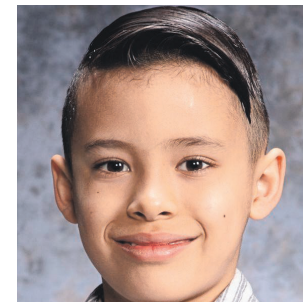
Alisha is an active member of the Limehouse Public School community who goes out of her way to help others. She is involved in Grow It Green, volleyball, Spirit Club, Dance Club, kindergarten helper, morning announcer, milk distributor and intramural activities. Alisha took an active role in the school's Snack Shack, helping to raise money to purchase moccasin kits through the Moccasin project.

**Rhys Price**  
**McKenzie-Smith Bennett**

Rhys is a quiet leader and member of the Green Team, cross-country, basketball, soccer and Stu-



Benjamin Gauntley



Evan Doyle



Sophia Aleristok



Olivia Schofield



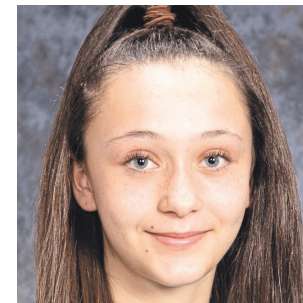
Jaime Barrows



Timothé Strout



Albert Smetana



Rhys Price



Owen Shannon



Alisha Volkes



Benjamin Harris



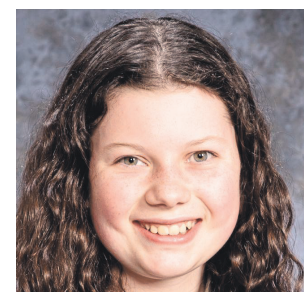
Fiona Gray



Jack McMurray



Graeme Furzer



Hayley MacFarlane

dent Leaders. Rhys is a person of excellence and strong moral character. Her thoughts, words and actions help make her school a better place. She is kind, caring and help-

ful, listens attentively and is a collaborative problem-solver with a strong sense of social justice.

**Benjamin Harris**  
**Park**

Benjamin actively involves himself in school life and is an exceptional academic. He is looked up to and serves as a role