

**COLDWELL BANKER**

**FIELDSTONE REALTY,  
BROKERAGE\***

**CONSUMER FOCUS  
INNOVATION  
TRUST**

*To be the trusted source of innovative real estate solutions, creating exceptional experiences for all we help, to become your Family Realtors® for Life.*

78 Main St. S.,  
Georgetown L7G 3G3  
www.FieldstoneRealty.ca  
**905-877-2630**

**Over 100 Years of Defining The Real Estate Industry**



**PARK AREA RESTORATION**  
44 MARKET STREET, GEORGETOWN  
1912 HERITAGE HOME COMPLETELY RESTORED ON ALL 3 LEVELS. 3600 SQFT OF LUXURY LIVING. 4 BDRMS 4 BATHS. PARK AREA. CALL BRUCE ELMSLIE.



**CLOSE TO ROCKWOOD CONSERVATION**  
142 JOLLIFFE AVENUE, ROCKWOOD  
COMFORTABLE 4 BDRM, 3 BATH TWO STOREY HOME WITH FINISHED BASEMENT. GOOD SIZED LOT AND CLOSE TO ROCKWOOD CONSERVATION. CALL NATALIE BRAUN.



**SHOW STOPPER!**  
154 MILLER DR, GEORGETOWN  
3000 ST FT + MASSIVE REC ROOM WITH WALK OUT. 5 BEDROOMS! 5 BATHS! DESIRABLE LOCATION IN GEORGETOWN SOUTH. CALL LINDA ELMSLIE.



**BEAUTIFULLY SECLUDED BUNGALOW**  
16589 SHAW'S CREEK RD, CALEDON  
TRANQUILITY IS YOURS IN THIS BEAUTIFULLY SECLUDED WELL KEPT 3 + 2 BEDROOM BUNGALOW ON JUST OVER AN ACRE WITH POND & OVERSIZED GARAGE. CALL EVAN DEBRINCAT.



**FABULOUS RENOVATED SEMI!**  
60B MAPLE AVENUE, GEORGETOWN  
FABULOUS RENOVATED SEMI FOR LESS THAN THE PRICE OF A TOWNHOME! HUGE YARD AND FINISHED BASEMENT. CALL MONICA DARABOS.



**BEAUTIFUL BUNGALOW ON HUGE LOT!**  
16710 LESLIE HILL ROAD, TERRA COTTA  
HEAR THE SILENCE AS YOU SIT ON YOUR FRONT PORCH. NEWER BUNGALOW ON HUGE LOT. FINISHED TO THE NINES. CALL EVAN DEBRINCAT.

**APARTMENT FOR LEASE**  
1 BEDROOM APARTMENT WITH DECK. INCLUDES PARKING. LOCATED IN OLD DOWNTOWN GEORGETOWN. \$1200 / MONTH PLUS UTILITIES. CALL EVAN DEBRINCAT.

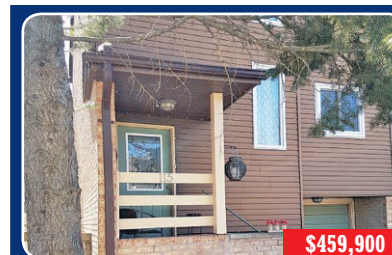
**RURAL APARTMENT FOR LEASE**  
800 SQ. FT. BEAUTIFUL RURAL LOFT APARTMENT VERY CLOSE TO ACTON ON 30 ACRE PROPERTY. \$1400 ALL INCLUSIVE. AVAILABLE MARCH/APRIL 1ST. CALL EVAN DEBRINCAT.



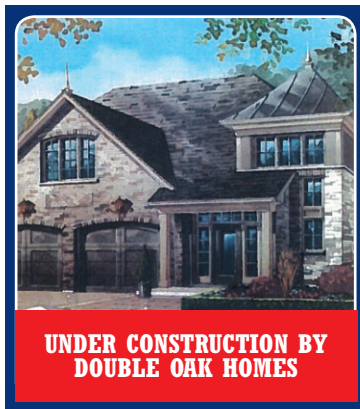
**SUITABLE FOR STORAGE OR WORKSHOP**  
LARGE 2400SQ FT BARN FOR LEASE TO THE RIGHT HORSE PEOPLE. LOCATED JUST BELOW ACTON, NORTH OF MILTON. 10 MINS FROM THE 401. CALL EVAN DEBRINCAT.



**BARN FOR LEASE**  
6000 SQ. FT. BARN FOR LEASE IN ERIN. 5 MIN FROM DOWNTOWN ACTON AND 15 MIN FROM GEORGETOWN. LARGE DRIVEWAY ACCESS. IDEAL FOR • LARGE TRUCK OR HEAVY EQUIPMENT STORAGE. CALL SUZANNE CLARKE.



**COMING SOON!**  
SET IN QUIET ENCLAVE, NICELY UPDATED END UNIT TOWNHOME W/FIN BSMT, EAT IN KITCHEN, LARGE BEDROOMS, WALKOUT TO PRIVATE DECK, GARAGE, LOADS OF VISITORS PARKING. CALL JANICE RUMLEY.



STONE, BRICK, STUCCO COMBINATION. EXCLUSIVE MYSTIQUE COMMUNITY. 3,400 SQUARE FEET. COFFERED 10 FT CEILINGS. DESIGNER KITCHEN WITH CEASARSTONE COUNTERTOPS. HARDWOOD FLOORS. QUICK CLOSING POSSIBLE 60 DAYS - 180 DAYS. ONCE IN A LIFETIME OPPORTUNITY!! CALL EVAN DEBRINCAT



**BUILD TO SUIT**  
1500 OR 2500 SQ FT. LARGE PROFESSIONAL OFFICE SPACE IN HIGH TRAFFIC LOCATION. PERFECT FOR MEDICAL OFFICE, ACCOUNTANT, LAWYER OR RETAIL. CALL EVAN DEBRINCAT.



**ESTABLISHED BUSINESS FOR SALE**  
90 MAIN ST. S, GEORGETOWN  
A SUCCESSFUL WELL ESTABLISHED BALLOON AND GIFT BUSINESS FOR SALE ON BUSY MAIN STREET OF DOWNTOWN GEORGETOWN.



**WAREHOUSE BUILDING FOR LEASE**  
FREESTANDING NEW SHOP/WAREHOUSE BUILDING AVAILABLE FOR LEASE W/ADDITIONAL SURROUNDING AGRICULTURAL LAND IF NEEDED. CALL EVAN DEBRINCAT.

**Your Family Realtors®....For Life!**

 <b>Evan DeBrincat</b> Broker of Record	 <b>Natalie Braun</b> Sales Representative	 <b>Suzanne Clarke</b> Sales Representative	 <b>Monica Darabos</b> Sales Representative	 <b>Jackie Eagles</b> Sales Representative	 <b>Bruce Elmslie</b> Broker	 <b>Jennifer Elmslie</b> Broker
 <b>Lisa Chamorro</b> Sales Representative	 <b>Linda Elmslie</b> Sales Representative	 <b>Margaret Ostrander Fleet</b> Sales Representative	 <b>Tony Fitzsimons</b> Sales Representative	 <b>Sandra Marin</b> Sales Representative	 <b>Janice Rumley</b> Sales Representative	 <b>Harald Schubert</b> Sales Representative

**HAPPY EASTER!**

**ONLY THE BEST IN THE BUSINESS JOIN OUR BRAND - CALL EVAN**

