



ROYAL LEPAGE  
**CHAIRMAN'S CLUB**  
NATIONAL TOP 1%  
2015

**TOP 1%  
IN CANADA  
2015**



**Iris Irwin**  
Sales Representative

**Betty D'Oliveira**  
Sales Representative

**905-873-5424**  
betty@haltonhillsrealestate.com

**Martha Summers**  
Sales Representative  
905-877-8262  
martha@marthasummers.ca

**Experienced Town & Country Specialists**  
**HaltonHillsRealEstate.com**

ROYAL LEPAGE **100 YEARS**  
MEADOWTOWNE REALTY, Brokerage  
Independently Owned and Operated



# Spring Must be Early

**Our Market is Strong.**  
**Our Listings are Selling with Multiple Offers.**  
**Please Call, We would Like to Help You too!**

## PERFECT FOR SNOWBIRDS



### ONE BEDROOM CONDO IN 'THE SANDS'

Adorable and affordable in mint condition with in-suite laundry, open concept floorplan and move-in ready. \$224,900.

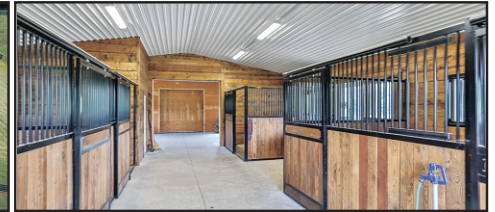
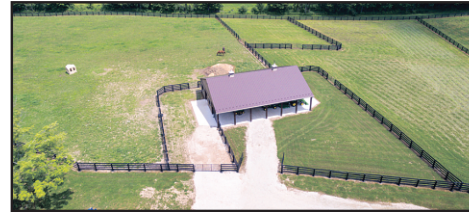
## THE CHARM OF CENTURY STONE



### SOUTH ERIN LOCATION - AMENITIES ABOUND

Mature private and pretty 2 acres, Charming 3 bedroom stone, board and batten home with walk out on finished lower level. Exposed interior stone, wide plank flooring, custom library with hidden door, separate master suite, oversized 2 car garage Special at \$749,000. Martha Summers

## PERFECTION ON 43 ACRES - JUST MOVE IN



### HOUSE - BARN - POOL - LANDSCAPING - 9 CAR GARAGE - TURN KEY

Quality open concept custom 3+ bedroom bungalow, fully finished lower level with 2nd kitchen & walkout to pool, gazebo, landscaped gardens, 6 stall 'Gara' barn, attached storage, paddocks and farmed fields, great commuting location in South Erin location. \$1,975,000 Martha Summers

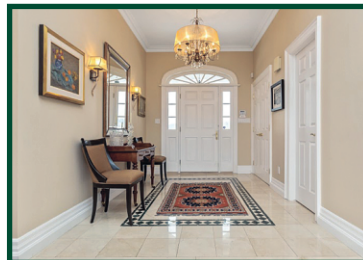
## BETWEEN GLEN WILLIAMS AND TERRA COTTA - EXCLUSIVE



### THE VIRTUAL TOUR IS WORTH SEEING

Spacious century 4 bedroom with incredible potential situated overlooking sparkling pond, 52 acres of escarpment views boasting a totally renovated 10 stall barn with attached drive thru storage building, 72 X 140 overall area, paddocks & farmed fields in Low Farm Property Taxes. Location and property are better than you can imagine! \$1,700,000. Martha Summers

## EXCLUSIVE - BETWEEN TERRA COTTA + GLEN WILLIAMS



### PLEASE CHECK OUT THE VIRTUAL TOUR

Custom stone bungalow beautifully & privately situated on 48 acres, amazing views from every oversized window. Open concept, gourmet kitchen overlooking great room, wood burning fireplace, hardwood floors, crown mouldings, dining room, full master suite, separate dressing room & 5 piece ensuite. Plus 2 bedrooms with ensuites, spacious, recreation/billiard room, stone fireplace, 4th bedroom or office & 3 piece washroom. \$1,850,000. Martha Summers

### 5 ACRES PLUS WORKSHOP

### LOVELY FAMILY HOME IN MINT CONDITION!

### COUNTRY CHARM

### THIS ONE HAS HISTORY



**SOLD  
IN HALTON HILLS**

13432 22ND SIDEROAD



**SOLD  
IN GEORGETOWN**

26 HARLEY



**SOLD  
IN ERIN**

4937 ERIN/ERAMOSA



**SOLD  
IN ACTON**

31 YOUNG