

**FACTORY AUTHORIZED CLEAROUT EVENT**

GET **0%** FOR UP TO **96** MONTHS FINANCING\* ON SELECT 2015 MODELS

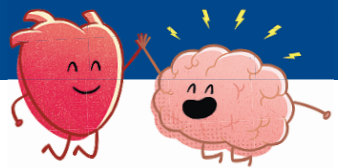
GET UP TO **12 WEEKLY PAYMENTS<sup>A</sup> ON US!** ON SELECT 2015 MODELS



**DON'T MISS OUR CUSTOMER APPRECIATION EVENT JUNE 25<sup>TH</sup> - 27<sup>TH</sup>!!**



The Hyundai your Heart wants



has a clearout price your Brain will love too.

**WIN-WIN**



**2015 ELANTRA L**  
CASH PURCHASE PRICE: **\$12,995<sup>†</sup>** INCLUDES **\$4,032** IN PRICE ADJUSTMENTS<sup>‡</sup>



**2015 ACCENT 5-DOOR L**  
CASH PURCHASE PRICE: **\$10,995<sup>†</sup>** INCLUDES **\$4,232** IN PRICE ADJUSTMENTS<sup>‡</sup>



**2015 SANTA FE SPORT 2.4L FWD**  
CASH PURCHASE PRICE: **\$24,995<sup>†</sup>** INCLUDES **\$3,832** IN PRICE ADJUSTMENTS<sup>‡</sup>



**THE ALL-NEW 2015 SONATA GL**  
LEASE FOR ONLY \$118 BIWEEKLY  
THAT'S LIKE PAYING **\$59** WEEKLY AT **0%** FOR **24** MONTHS WITH \$995 DOWN<sup>‡</sup>

Visit [miltonhyundai.com](http://miltonhyundai.com) for details on our entire line-up!

**5 YEAR WARRANTY** 5-year/100,000 km Comprehensive Limited Warranty\*\*  
5-year/100,000 km Powertrain Warranty  
5-year/100,000 km Emission Warranty

**HYUNDAI** NEW THINKING. NEW POSSIBILITIES.

**1285 STEELES AVENUE EAST, MILTON**  
**1-866-980-8992 • MILTONHYUNDAI.COM**

\*The Hyundai names, logos, product names, feature names, images and slogans are trademarks owned by Hyundai Auto Canada Corp. All other trademarks are the property of their respective owners.  
†Cash price of \$12,995/\$10,995/\$16,995/\$24,995 available on all new 2015 Elantra Sedan L Manual/Accent 5-Door L Manual/Veloster 6-speed Manual/Santa Fe Sport 2.4L FWD models and includes price adjustments of \$4,032/\$2,232/\$3,832/\$3,832. Prices include Delivery and Destination charges of \$1,595/\$1,595/\$1,695/\$1,795, fees, levies and all applicable charges (excluding HST). Prices exclude registration, insurance, PPSA, license fees and dealer admin. fees of up to \$499. Fees may vary by dealer. Delivery and Destination charge includes freight, P.D.E. and a full tank of gas. Office adjustments of up to \$4,032/\$4,232/\$3,832/\$3,832 available on all new 2015 Elantra Sedan L Manual/Accent 5-Door L Manual/Veloster 6-speed Manual/Santa Fe Sport 2.4L FWD models. Price adjustments applied before taxes. Offer cannot be combined or used in conjunction with any other available offers. Offer is non-transferable and cannot be assigned. No vehicle trade-in required. †Finance offers available O.A.C. from Hyundai Financial Services. Financing example: 2015 Accent 5-Door GL Auto for \$19,136 at 0% per annum equals \$46 weekly for 96 months for a total obligation of \$19,136. \$0 down payment required. Cash price is \$19,136. Cost of Borrowing is \$0. Finance example includes Delivery and Destination of \$1,595. Levies and all applicable charges (excluding HST). Finance example excludes registration, insurance, PPSA, license fees and dealer admin. fees of up to \$499. (Leasing offers available O.A.C. from Hyundai Financial Services based on a new 2015 Sonata GL Auto with an annual lease rate of 0%. Biweekly lease payment of \$118 for a 24-month walk-away lease. Down Payment of \$995 and first monthly payment required. Total lease obligation is \$7,131. Lease offer includes Delivery and Destination of \$1,695. Levies and all applicable charges (excluding HST). Lease offer excludes registration, insurance, PPSA, license fees and dealer admin. fees of up to \$499. Fees may vary by dealer. \$0 security deposit on all models. 20,000 km allowance per year applies. Additional charge of \$0.12/km. Δ50 finance payments for up to 12 weeks offer is available on all new 2015 Hyundai models and the total amount of the 12 weekly payments is converted to an equivalent price adjustment on the price of the vehicle. This offer applies only to purchase finance offers on approved credit. Example: Weekly finance payments on a new 2015 Accent 5-Door GL Auto equal \$52 for 84 months for a total price adjustment amount of \$622. •Prices of models shown: 2015 Elantra Limited/Accent GLS Auto/Santa Fe Sport 2.0T/Veloster Tech Auto/Santa Fe Sport Limited AWD are \$26,927/\$21,777/\$32,927/\$26,727/\$41,777. Prices include Delivery and Destination charges of \$1,595/\$1,595/\$1,695/\$1,695/\$1,795, fees, levies and all applicable charges (excluding HST). Prices exclude registration, insurance, PPSA, license fees and dealer admin. fees of up to \$499. Fees may vary by dealer. •Fuel consumption for new 2015 Elantra Limited (H/WY 6.7L/100KM), 2015 Accent GLS (H/WY 6.2L/100KM, City 8.9L/100KM), 2015 Sonata Sport 2.0T (H/WY 7.4L/100KM), 2015 Veloster Tech Auto (H/WY 6.6L/100KM, City 8.6L/100KM), 2015 Santa Fe Sport Limited AWD (H/WY 9.8L/100KM, City 12.9L/100KM) are based on Manufacturer Testing. Actual fuel efficiency may vary based on driving conditions and the addition of certain vehicle accessories. Fuel economy figures are used for comparison purposes only. ††ΔΔOffers available for a limited time and subject to change or cancellation without notice. Dealer may sell for less. Inventory is limited. Visit [www.hyundaicanada.com](http://www.hyundaicanada.com) or see dealer for complete details. ††Hyundai's Comprehensive Limited Warranty coverage covers most vehicle components against defects in workmanship under normal use and maintenance conditions. \*Giveaway to be valued between \$150 & \$500. Value of giveaway to be in the form of a discount used towards the purchase of warranty enhancements and/or protection packages. No cash value.

**Tickets on sale now for library show in July**

Tickets are now on sale at Halton Hills Public Library for Music by Jake!  
Juno nominee Jake Differ's musical, funny and highly interactive live performances have delighted family audiences all across Canada. Differ plays a great mix of up-tempo songs from his award-winning CDs (Parents' Choice Gold Award and NAPPA Gold Award). With Differ leading the way on guitar, ukulele, flute and voice, everyone ends up singing, dancing, playing instruments and laughing the whole way through.  
Two performances on Saturday, July 11 at:  
• Georgetown Branch in the John Elliott Theatre at 10:30 a.m.  
• Acton library at 2 p.m.  
Tickets \$3 from the JET Box Office for the Georgetown show and the Acton Branch Library Service Desk for the Acton show.  
For more information, visit [www.hhpl.on.ca](http://www.hhpl.on.ca)

**Driven by inspiration**

**Muscle Car ULTRA PRO**  
Inspiration

USE 41SS-HO      USE 41GT-AB      USE 41AR-SL

1969 Chevrolet Camaro SS Z28 Hugger Orange SS  
1967 Ford Mustang GT-500 Acapulco Blue GT  
1970 Plymouth Barracuda AAR Sub Lime

The UltraPro's Limited Edition of the "Muscle Car" series tool boxes was created with the American muscle car enthusiast in mind. Who never dreamed of owning one of the three muscle-car legends of the 60'S & early 70's or better yet, maybe you did own one, in this case why not bring-back some great memories with these American Legends. Each tool box combo is paired with one of these 3 muscle car legends: the 1967 Ford Mustang GT-500 (Acapulco Blue); the 1969 Chevrolet Camaro SS Z28 (Hugger Orange) and the 1970 Plymouth Barracuda AAR Edition (Sub Lime). Furthermore, this Limited Edition Series also includes a matching vintage cooler, a stainless-steel mug and an engraved personalized ID plate.

**Specifications:**

- 41" Tool box 2 piece combo
- 4 Drawer top chest: W 41" x D 18" x H 21.5"
- 6 Drawer roller cabinet: W 41" x D 18" x H 41"
- 0.8mm steel shell, 8 drawers
- Raise & release drawer latches
- 100 lb. capacity ball bearing drawer slides
- EVA drawer liner
- Recessed chrome handle on top chest, 1 pc tubular stainless steel handle on roller cabinet
- Gas struts equipped chest lid
- 5" x 2" tire style casters

**Be the first to show your colours.**

**Combo \$1599.99 each**

**Retro Cooler & Cool Mug FREE**  
with a purchase of one toolbox combo  
Also includes, an engraved personalized ID plate.

**NAPA AUTO PARTS**

**WARE'S AUTOMOTIVE AND INDUSTRIAL SUPPLY**

**47 Mountainview Rd North Georgetown, ON L7G 4J7 Telephone: (905) 877-6969**

**254 Main St North Acton, ON L7J 1W9 Telephone: (519) 853-3410**