



Liz Crighton
Sales Representative



See our listings on
Homefinder.ca
Click "Find An Agent"
then enter Allan Alls
and Liz Crighton

BRINGING FAMILIES TO ERIN

www.remaxerin.com



Perry Meeker
Sales Representative



JUST OVER 10 ACRES... \$499,999
Room for kids, cats, dogs, birds, goats and horses! Level and private land, take a look at the paddock! Long driveway off a paved road. Minutes to Orangeville and to good commuter roads south. There is a one bedroom apt over the garage so if you would like to see it we need some notice to view. Now here is a sign of Spring! MLS# X2916588



6+ PRIVATE ACRES - \$839,000
You cannot drive by this handsome property without thinking WOW! With a beautifully well appointed home, not a blade of grass out of place and the inside has the same level of meticulous care. Structurally and mechanically this house was built to the highest standards. Well... it is actually two houses in one, fully separate two storey living. Tons of options. MLS# X3028119



THIS 1.41 ACRE PROPERTY - \$633,900
With Inground Pool In Executive Subdivision Is Located Just West Of Orangeville. Offering Comfort And Space For The Growing Family, This 2-Storey 4-Bedroom , 2.5-Bath Home Will Be Sure To Please! MLS# X2919169



SPECTACULAR GARDENS! - \$399,900
And A Little Stream Runs Through This One! Updated 4+1 Bed, 3.5 Bath Century Home On Just Under An Acre In A Picturesque Country Setting In The Quaint Village Of Orton On A Paved Road. MLS# X3020780



AFFORDABLE COUNTRY LIVING! - \$146,000
Very Well Maintained Inside & Out, 3 Bdrm Mobile Home In Stanley Park. Fully Fenced Yard With Large Shed/Workshop With Hydro. Carport, Interlocking Stone Driveway, New Front Deck, Mud Room With Lots Of Storage. This Home Has Been Well Taken Care Of, So You Can Just Move Right In And Enjoy! MLS# X2993208



ADORABLE 2-BEDROOM SIDESPLIT - \$339,000
Located Minutes To Erin Village Schools And Shopping. Compact And Very Functional, This Home Offers Loads Of Storage In 2-Car Garage & Garage Loft, 11'x10' Shed And In The Basement Under The Living Room & Kitchen. Entertaining Is Easy In The Very Large Back Yard, Which Is Fenced On 3-Sides. MLS# X2996062



EXCELLENT HOBBY HORSE FARM - \$964,900
Located on paved road, easy commute to the GTA. Comes with recently built 100x184x16 Indoor Riding Arena, 2 paddocks 250x150 both w/double run-ins, and small 6-stall barn. Spacious home w/4 bed, 3 bath, 2 -car garage all on just under 10 acres. MLS# X2823769



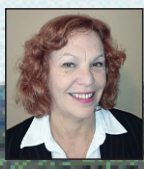
TRULY GRACIOUS! \$399,000
3 bedroom & a Nursery. Erin Village Century home. Spacious and you really need to come inside to appreciate this home. Take pleasure in the quiet & private backyard. The time and craftsmanship of the era has been beautifully maintained with high ceilings, spacious hallways, good size closets. The wood work is amazing. Walk to everything our little Village has to offer. MLS# X3106853



PRIVATE AND PEACEFUL \$839,000
Down A Long Laneway, To The Foot Of Private Lake Roman A Spectacular Country Home Nestled On 3.45 Acres, Awaits You. This Executive Home, Is An Entertainers Delight. It Is Open And Upgraded With Only The Top Quality Finishes. It Has A Large 3+ Bay Garage With A Spacious Workshop Above. Excellent Central Location On A Paved Road. MLS# X3026161



10 PRETTY & PRIVATE ACRES! \$618,000
Light & very spacious 4 bedroom Family home, set well back from the quiet paved road. A great central location! Rolling, treed land + pond. Small barn/garage. Room for a cow, couple of chickens, and a horse. Great for a large Family and come see all the improvements. MLS# X3069273



Bonnie Sturgeon
Sales Representative
& Licensed Assistant to Liz Crighton



RE/MAX REAL ESTATE CENTRE

P.O. Box 1076, 14 Main Street,
Erin, ON N0B 1T0
519-833-9911
Toll Free 1-800-834-5516
Fax 519-833-0311



Melodie Rose
Sales Representative
& Licensed Assistant to Perry Meeker



GRAND OPENING

SATURDAY, DECEMBER 6TH AT 10AM



THE DIFFERENCE IS IN THE VIEW

Live in Georgetown's most natural setting with spectacular green surroundings. In this boutique condominium residence you will have spacious covered terraces that overlook a beautiful ravine setting with open concept designs which feature 9 ft. ceilings, granite countertops and exquisite appointed finishes.

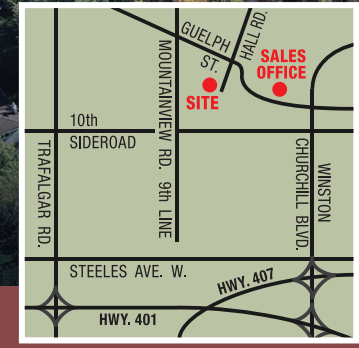
**SALES OFFICE LOCATION:
509 Guelph St., Norval, ON**



Brokers protected. Prices & specifications subject to change. All images are artist's concept. Map not to scale. E. & O.E.



FROM THE LOW
\$400's
FROM 976-1,814 SQ.FT.



MYTERRACES.CA 905-877-7776