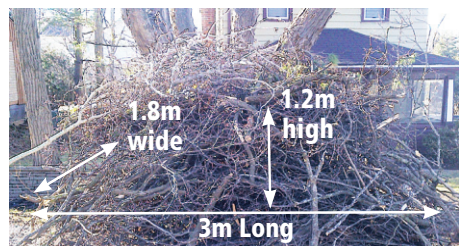


## Storm-generated Bulk Brush Collection

In December 2013, Halton Region experienced a major ice storm that caused a lot of tree damage. Visit [Halton.ca/brush](http://Halton.ca/brush) for up-to-date bulk brush collection information. Halton Region is providing the following options for storm-generated bulk brush:



### Halton Hills Collection Areas 3, 4, 5

Collected until May 30, 2014, on the same day as garbage

Visit [Halton.ca/wastecalendar](http://Halton.ca/wastecalendar) to find your waste collection day

- Bulk brush may be placed out on regular yard waste/garbage days.
- Bulk brush must be placed in one pile no larger than 3 m long by 1.8 m wide x 1.2 m high (10 ft long by 6 ft wide by 4 ft high), with branches a maximum of 7.5 cm (3 inches) in diameter.
- Bulk brush larger than the specified dimensions will not be collected.
- Bulk brush must be free of loose debris such as leaves and trimmings.
- Bulk brush will be collected separately from yard waste and collection may be delayed due to high volume of bulk brush at the curb.
- Ensure your Blue Box, GreenCart, garbage and yard waste is not blocked by bulk brush.

**Place your bulk brush at the curb by 7 a.m. the morning of your collection day, but no sooner than 5 p.m. the evening before.**

### Halton Hills Collection Areas 1, 2

Collected once for each household, Monday to Friday

**Halton Hills Collection Area 1:**  
May 26 to June 6, 2014

**Halton Hills Collection Area 2:**  
June 9 to June 13, 2014

- Bulk brush must be placed in one pile no larger than 6 m long by 1.8 m wide x 1.2 m high (20 ft long by 6 ft wide by 4 ft high), with branches a maximum of 7.5 cm (3 inches) in diameter. Bulk brush larger than the specified dimensions will not be collected.
- Bulk brush must be free of loose debris such as leaves and trimmings.
- Place bulk brush along the roadside. Be safe: ensure bulk brush does not impede the road, and that brush is not placed inside ditches.
- Ensure your Blue Box, GreenCart and garbage is not blocked by bulk brush.

**Place your bulk brush roadside by the first collection day scheduled for your area.**

**Bulk brush collection may be delayed due to high volume of bulk brush at the curb.**

**This is a one-time extension of the special bulk brush collection program in non-serviced areas.**

### Drop off

Until June 30, 2014, Halton residents and contractors can drop off yard waste and bulk brush at the Halton Waste Management Site, free of charge.

The Halton Waste Management Site is located at 5400 Regional Road 25, Milton, and is open Monday to Saturday, 8 a.m. to 4:30 p.m.

Mixed waste loads are subject to standard disposal fees. Visit [Halton.ca/hwms](http://Halton.ca/hwms) for a list of disposal fees.

Please contact us as soon as possible if you have any accessibility needs at Halton Region events or meetings.

220514

# Don't forget the sunscreen when working in the yard

(NC) As summer approaches, many families are rushing outdoors to spend time at the beach, park, pool, cottage, campsite, or even just lazing in the backyard. Of course after a long winter, fresh air and sunlight on your skin can feel pretty good, but it's important to remember that the sun isn't always on your side. Prolonged exposure can cause many unpleasant side effects like burns and sun stroke, so take a look below for some tips from Target pharmacist Bowen Chen on how to best protect yourself.

- **Start with sunscreen** – With hundreds of different types of sunscreens available, it's hard to know which kind is best to use. As a general rule, it's best to stock up on sunscreen that has an SPF (sun protection factor) of 30 or higher and offers protection from both UVA and UVB light.

- **Apply Often** – Although sunscreen is one of the best ways to protect against the sun's harmful rays, it's only effective if applied properly. To get maximum protection out of your sunscreen, apply it 15 minutes before going out in the sun, and reapply every two hours or more, especially if you're

sweating or swimming.

- **Be sun care savvy** – Stocking up on summer essentials doesn't have to mean spending your hard earned money on expensive products. For example, Target offers up & up brand sunscreen that provides lasting protection at great value. You can also stock up on hats, t-shirts and umbrellas to provide protection for the whole family – all at great prices.

- **Seek shade and stay hydrated** – Of course the best way to protect against the sun is to avoid it all together. This is especially important for babies and newborns and during midday hours between 10 a.m. – 4 p.m. when the sun is strongest. If outdoors, be sure to locate areas that are covered providing shade and always remember to drink lots of water.

- **Soothe the burn** – If all else fails and you find yourself with a sunburn, be sure to treat it right away with a cool compress, and soothing agents such as aloe vera or hydrocortisone cream. If you're concerned about a burn, your local Target pharmacist can provide expert advice on the best way to treat it.

## Planting & Delivery Service



*A convenient, hassle-free way to get your investments home safely and planted by an expert.*



**Sheridan Nurseries**  
100+ YEARS

*For all your gardening needs!*  
**GEORGETOWN**

12266 Tenth Line | Tel: 905-873-7547 | E-mail: [georgetown@sherdannurseries.com](mailto:georgetown@sherdannurseries.com)

Store Hours: Mon-Fri: 7:00am to 9:00pm | Sat: 7:00am to 6:00pm | Sun: 8:00am to 6:00pm

