

Region will collect storm damage brush

Halton Region has arranged for enhanced bulk brush collection to assist residents with clean-up from the weekend's ice storm.

The enhanced service will start Thursday, Dec. 26 in urban areas of Halton Hills and Milton, in areas that receive regular yard waste collection from Halton Region.

The Region's yard waste collection trucks will be working daily on scheduled collection days to facilitate picking up the bulk brush.

Between Dec. 26 and Jan. 6, collection will be focusing on urban areas of Milton and Halton Hills that have sustained significant tree damage.

Starting on Jan. 6 until Jan. 31 residents in areas of Halton where yard waste is regularly collected can set out one pile of unbundled bulk brush on their regular garbage collection day.

"Halton Region works hard to ensure we are prepared to respond in the event of an emergency," said Regional Chair Gary Carr.

"Waste collection is an important service we offer, so we are working with our partners at the City of Burlington and the Towns of Halton Hills, Milton and Oakville to help



The store cleanup will continue for several days, if not weeks.

Photo by Victoria Julien

residents manage the clean-up of the additional bulk brush caused by the ice storm."

The enhanced service will be provided through Jan. 31.

In Halton Hills, this collection service is available in collection areas 3, 4 and 5.

For more information, dial 311 or visit www.halton.ca to find your collection area and next garbage collection date.

Bulk brush includes loose twigs and branches, which must be free of loose leaves and trimmings. Bulk brush does not need to be bundled or tied. Bulk brush must be placed in a maximum of one pile with branches a maximum of 7.5 cm (3 inches) in

diameter and 2 m (6.5 ft.) long.

Tree trunks and branches greater than 7.5 cm (3 in.) in diameter and 2 m (6.5 ft.) long are not accepted as bulk brush.

Halton residents can bring these items to the Halton Waste Management Site until Jan. 31 free of charge. If residents are unable to bring the items to the Site, they can arrange for collection through a private contractor. Look in the Yellow Pages for "waste collection" or "yard waste."

Residents who do not regularly receive yard waste collection from Halton Region, for example Halton Hills (collection areas 1 and 2) may drop off bulk brush at the Halton Waste Management Site until January 31 free of charge.

Halton Region will be placing a priority on regularly scheduled waste collection service and offering the enhanced bulk brush collection as resources allow. Further weather events could impact waste collection service and further updates will be posted on the Region's website www.halton.ca

For more information about waste collection, access Halton Region by dialing 311 or visiting www.halton.ca/waste.



Halton Region has arranged for enhanced bulk brush collection to begin Thursday in the aftermath of this weekend's storm.

Photo by Jon Borgstrom



MISKAS
WOOD PRODUCTS INC.

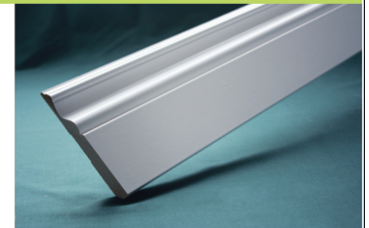
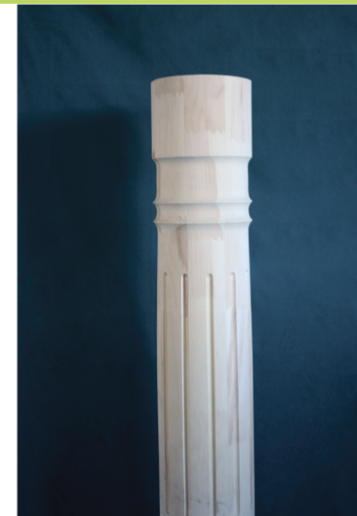
46 ARMSTRONG AVE., GEORGETOWN
www.MiskasWoodProducts.com

FREE DELIVERY IN GEORGETOWN

Your Local Trim & Moulding Manufacturer



Door Trim
Baseboards
Chair Rail
Interior Pillars



Window Trim
Straight Boards
Crown Moulding
Exterior Columns



416 - 220 - 2741

*our entire product range is available primed

GEORGETOWN'S BEST KEPT SECRET !!