

Georgetown 905-877-4857

Acton 519-853-2600

www.escarpmentrealty.ca



Steve Fontanna
Broker of Record



Bruce Hayward
Sales Representative



Janis Braida
Sales Representative



Linda Olson
Broker



Sarah Brophy
Sales Representative



Tamara Ferrari
Sales Representative



Kati Nuttall
Sales Representative



Johnny Rivers
Sales Representative



Escarpment Realty

BROKERAGE
INDEPENDENTLY OWNED AND OPERATED

GREAT VALUE!

\$199,900



26 Farrell Street, Arthur - st u y o r t
r B roo t o u n o u s n A r t u r. F n s
s n t W C o s t o S o o s n s o p p n .
www.fontanna.ca

VACANT LAND



Highway #124 / #25, Erin - Stun n 6 r p r o r t t
s p r o . D r v r y n p V P r v y w t s
w t n t s s p t u r p n o r s t . C S t v F o n t a n n a o r
y o u r p r v t v w n n o u t w w w . o n t n n . o r o r
p t u r s .
www.fontanna.ca

NEW

\$499,900



555 Guelph Street - D t 3 r
u n o w . O p n o n p t t n . L r y
r o o . P r o t o n w t o t s o p r n . S t y
t u n o r v r t u t o u r o n w w w . o n t n n . .
www.fontanna.ca

HOME PLUS SHOP



44 Young Street, Acton - r roo o
p u s o p n t r t o A t o n W G r t w y
x p o s u r o r s u s n s s W P r s s C - 2
o n n n p . P r n r o n t n . r t u t o u r
o n w w w . o n t n n .
www.fontanna.ca

COUNTRY ESTATE HOME

\$829,000



5120 Pineridge Drive - Country P r s n u t s r o
G o r t o u n W C u s t o u t 2 S t o r y W g r o o H o o n
o v r 2 r s o t u r t r s W p r o s s o n y n s p W
o t o n o n o r u s .
Bruce Hayward 416-910-3985

NEW LISTING

\$879,000



11722 Winston Churchill Boulevard, Halton Hills - M n u t s
r o G o r t o u n W 2 5 0 0 s q u r o o t S t o n t B r B u n o w o n u t u W
d . 7 5 r o t . 3 + d B r o o W H r w o t r o u o u t W 3 G o r o u s o o
B u r n S t o n F r P s W G r n t K i n W
S p r t E n t r t o B s m t w t O f i .
Bruce Hayward 416-910-3985

NEXT TO TRANSIT

\$269,900



155 Hillcrest Avenue, Mississauga - C o n o A p r t n t
n M s s s u . p t 2 B r o o n o p r t n t W r
s t p s r o G o r n s t w C o n t t S r B r o p y D r t y o r y o u r
p r s o n v w n .
www.sarahbrophy.ca

Spring has Sprung!!

GET INTO THE SPRING MARKET BEFORE IT'S TOO LATE

Call Sarah Brophy
905-699-3687

Charleston HOMES

TOUR OUR DECORATED MODEL HOME



LIVE LIFE WELL

EXPERIENCE
\$1.2 to \$2+ MILLION DOLLAR
CUSTOM BUNGALOWS
& 2-STOREY HOMES ON
ONE ACRE COUNTRY LOTS

- LOCATED IN ABERFOYLE, 5 MIN SOUTH OF GUELPH
- JUST 4 MINUTES TO HWY 401
- ONLY 25 MINUTES TO MISSISSAUGA
- 35 MINUTES TO OAKVILLE
- CLOSE TO CITY CONVENIENCES

TAKE EXIT 299 BROCK RD S. NORTH TO GUELPH
GOOGLE ADDRESS: 4512 VICTORIA RD. SOUTH,
GUELPH, NOB 2J0



AUDREY MEADOWS
Country Estate Collection
ABERFOYLE

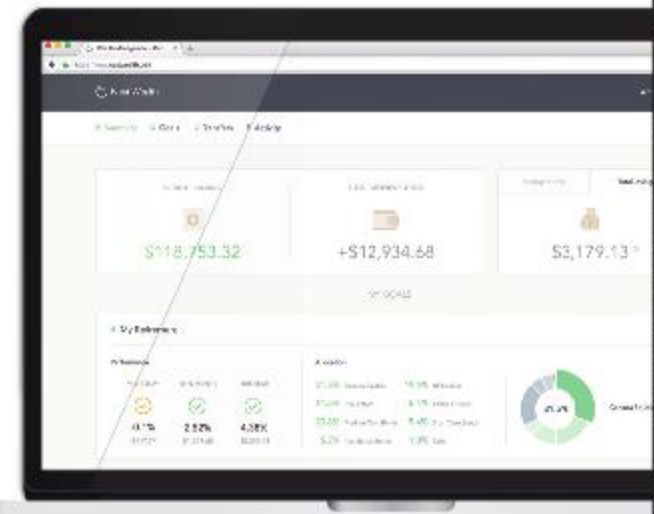
charlestonhomes.ca 519-823-1900

Join Canada's first subscription based investing service

Traditional and hard to understand investment fees could be costing you up to 30% of your potential wealth.*

Learn why Canadian are changing the way they invest their money.

Visit nestwealth.com



* Copyright 2016 Nest Wealth Asset Management Inc. "Nest Wealth" is the trade name of Nest Wealth Asset Management Inc. The products and services advertised are designed specifically for investors in provinces where Nest Wealth is registered as a financial institution and may not be available in all provinces. Products and services are only offered in accordance with applicable laws and regulations. This advertisement is neither an offer to sell nor a solicitation of an offer to sell securities being promoted.