

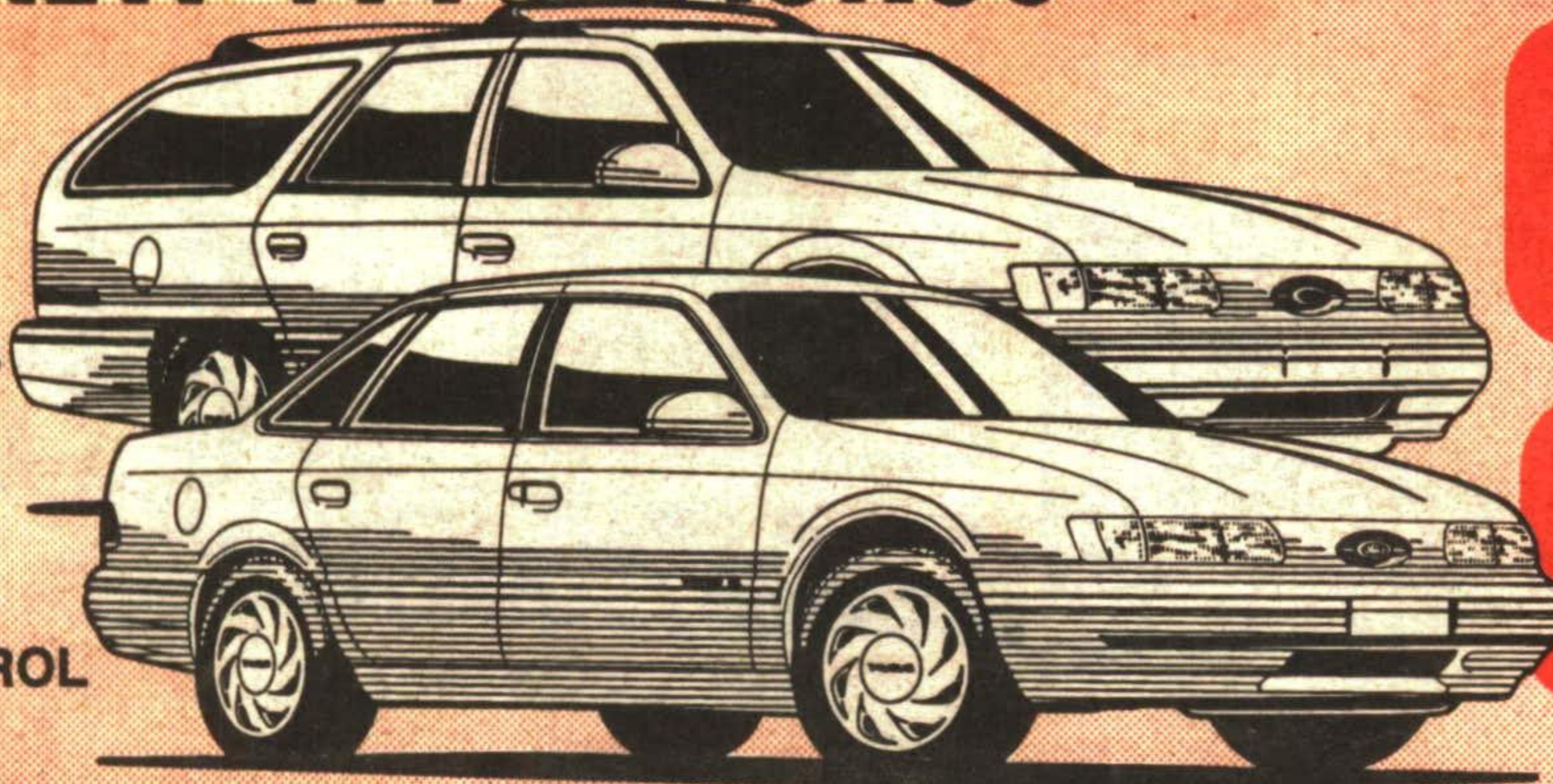
NOBODY SELLS FORDS FOR LESS

THE CAPITAL FORD PRICE GUARANTEE

WE WILL BEAT ANY OTHER ADVERTISED FORD PRICE

BRAND NEW 1995 TAURUS

- ✓ AIR & AUTOMATIC
- ✓ DUAL AIR BAGS
- ✓ POWER STEERING & BRAKES
- ✓ POWER LOCKS & WINDOWS
- ✓ AM /FM STEREO CASSETTE
- ✓ TILT STEERING / SPEED CONTROL
- ✓ PLUS ALL STANDARD FACTORY EQUIPMENT



HUNDREDS LESS THAN MERCURY SABLE

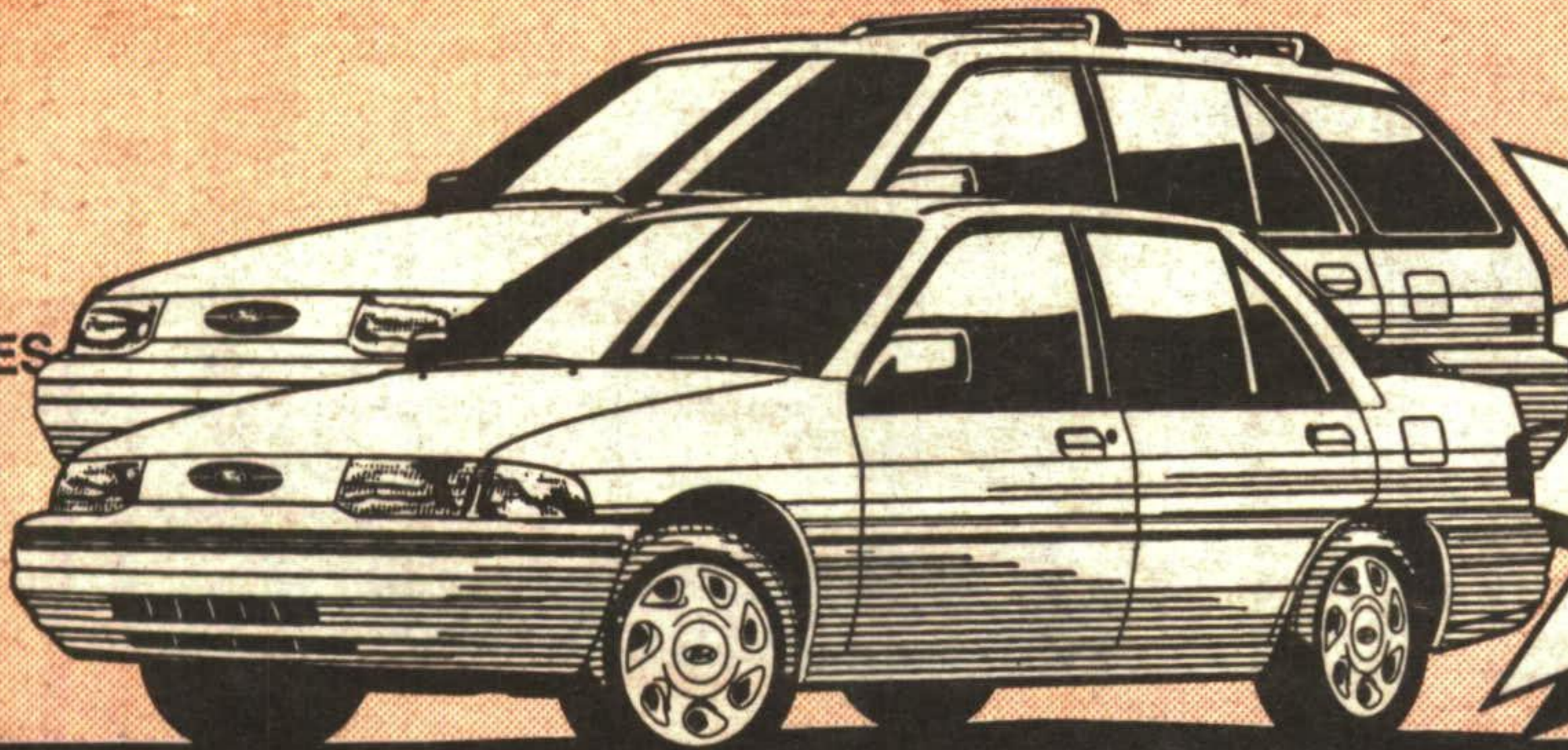
WHY PAY MORE?

BUY OR LEASE ON THE 24 MONTH Ford PLAN

\$18,995* \$294/mo.*

BRAND NEW 1995 ESCORT

- ✓ AIR & AUTOMATIC
- ✓ DUAL AIR BAGS
- ✓ POWER STEERING & BRAKES
- ✓ POWER LOCKS & WINDOWS
- ✓ AM/FM STEREO
- ✓ POWER MIRRORS
- ✓ PLUS ALL STANDARD FACTORY EQUIPMENT

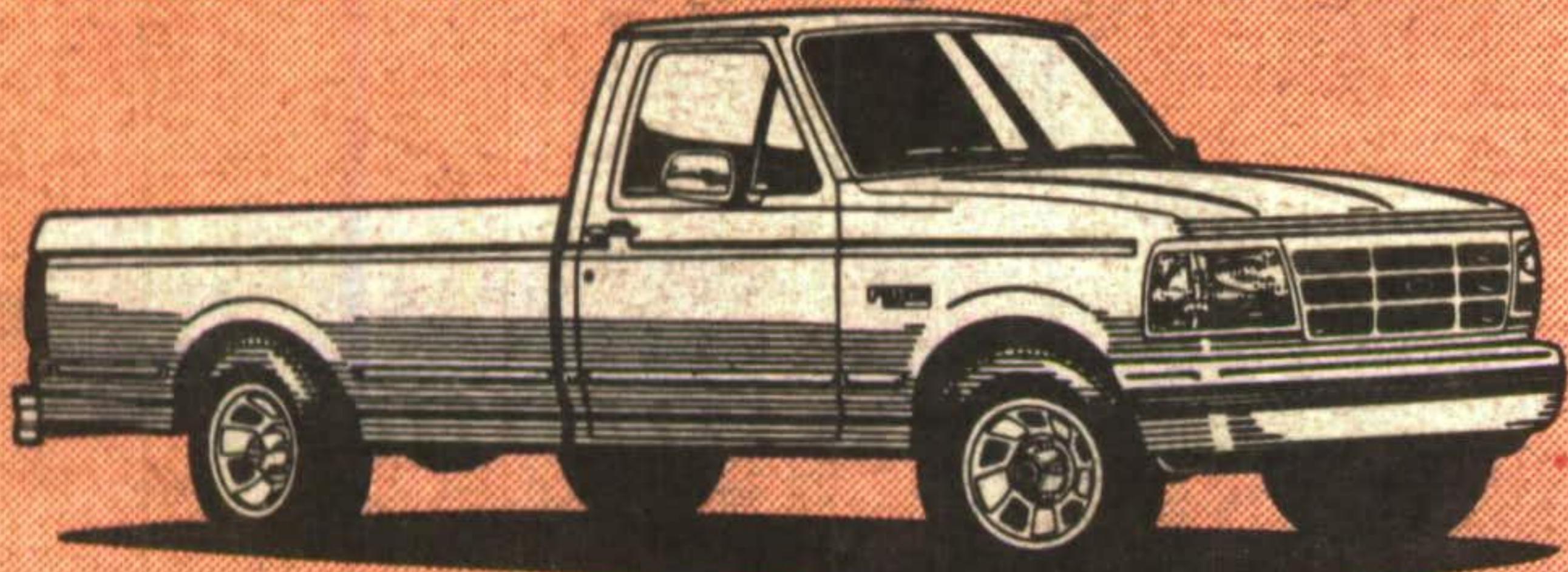


YOUR CHOICE SEDAN OR WAGON. SAME PRICE!

BUY OR LEASE ON THE 24 MONTH Ford PLAN

\$13,974* \$194/mo.*

BRAND NEW 1995 ENFORCER



- ✓ F-150 - TOUGH TRUCK
- ✓ DRIVER SIDE AIR BAG
- ✓ POWER STEERING & BRAKES
- ✓ CHROME WHEELS
- ✓ AM/FM STEREO
- ✓ PLUS ALL STANDARD FACTORY EQUIP.

BUY OR LEASE ON THE 24 MONTH Ford PLAN

\$14,995* \$199/mo.*

LAST OF THE BRAND NEW '94s

- RANGER - long box, ps/pb, am/fm stereo aluminum wheels, handling pkg, #R8427..... **\$11,594**
- MUSTANG GT - V-8, 5 spd, fully equipped incl performance tires & alum wheels #3408.... **\$17,994**
- AEROSTAR - Air, auto, captains chairs, rear ABS, am/fm stereo..... **\$15,995**
- ESCORT GT - loaded, drivers air bag, power steering, power brakes, am/fm cassette..... **\$12,694**
- ASPIRE - hatch, dual air bags, dual remote mirrors, am/fm cass. rear defrost, #A7406..... **\$9,394**
- EXPLORER - XLT, air & auto, loaded incl leather bucket seats luggage rack, & more..... **\$26,995**
- CROWN VIC. LX - last one, fully equipped, ABS, auto, air, power seats, locks #7407..... **\$24,494**

FREE SERVICE LOANER CARS
for our customers

CAPITAL FORD

LOWEST PRICE GUARANTEE

Hwy. 7 at Delrex Blvd. GEORGETOWN 873-1626

Prices are plus freight. (Escort 660, Taurus 785, Enforcer, 895) taxes, & licence. Lease payments based on 24 month lease O.A.C. with down payment of \$2,500 for Escort & Enforcer, \$3000 Taurus or equivalent trade. PRICE GUARANTEE. Price must be a new, unregistered, current model vehicle advertised in the last 7 days by an authorized dealership. See dealer for complete details.

GREEN THUMB GARDENING



By CHRISTINE COLE

CHRISTMAS TREE CARE

A festive decorated Christmas tree is a well-established traditional in this country. As such, it is the focus of most Yuletide celebrations. Natural and freshly cut Balsam Firs, Scotch Pine and Spruce are the most popular trees chosen in Ontario to adorn our homes for the holiday season. However, since these trees are cut early in the season, they tend to slowly dry out and drop their needles. But there is a few methods to keep your tree fresh in your home, and prolong its natural beauty.

After you have selected your favorite tree, store it in a cool, sheltered location. The garage or porch is ideal. Both locations protect the tree from the drying effects of the sun and wind. When you bring the tree inside the house for decorating, cut approximately one inch off the butt end of the trunk. Then, immediately place it in a stand that will hold water - plenty of water.

Depending on the tree, they can use from one pint to one gallon of water per day. Therefore, the water level should be checked daily.

The cut surface at the base of the trunk will seal if the water level gets too low. If this happens, another inch should be cut off the trunk.

Always keep the tree away from heat sources such as radiators, fireplaces, woodstoves, etc.

The most important thing to remember is that a tree with a high moisture content releases more delightful fragrance and retains its natural lustre and needles longer.

Following these few care tips should ensure that your Christmas tree stays fresh and attractive for several weeks.

Each week Christine Cole of Tuitman's Garden Centre and Landscaping, Highway 25, 1 mile south of Acton, 853-2480, will be presenting helpful tips and information to assist you in creating your garden show-place!

TUITMAN'S GARDEN CENTRE
ACTON
853-2480