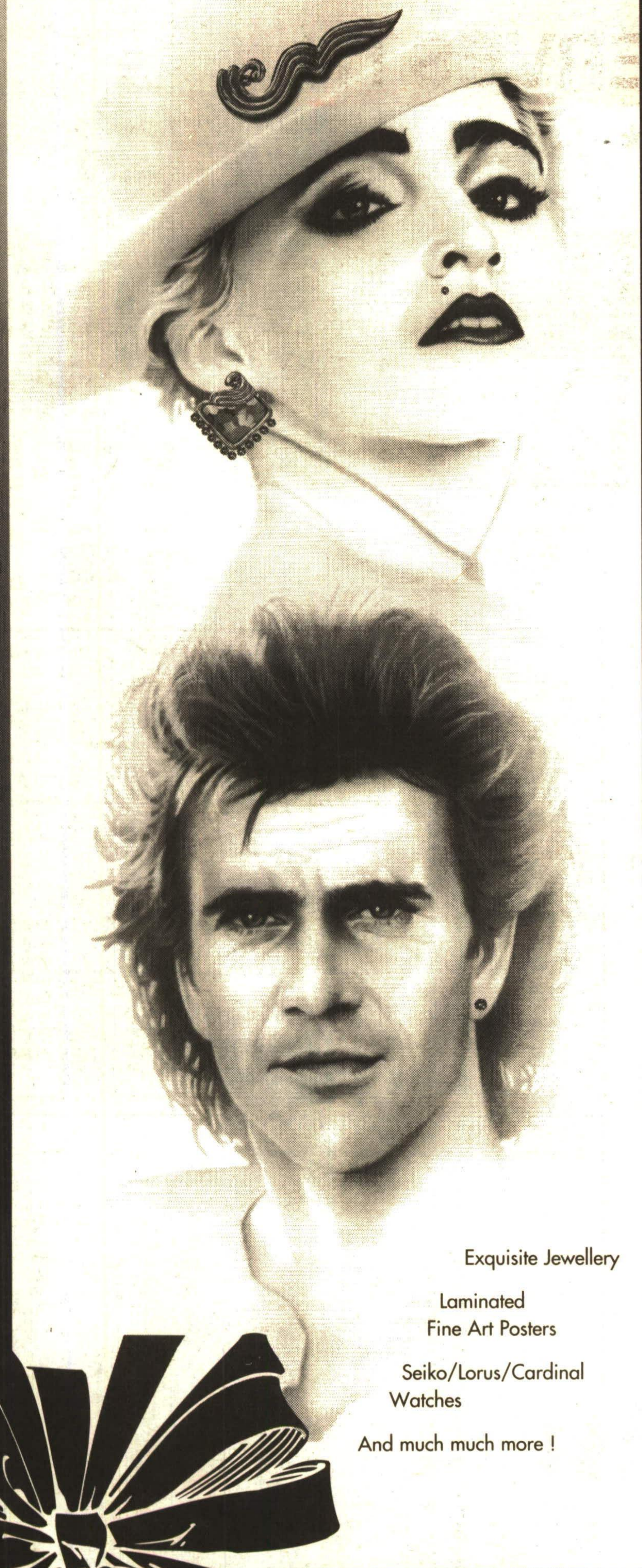


Holiday Gift Ideas this season at . . .



Exquisite Jewellery

Laminated
Fine Art Posters

Seiko/Lorus/Cardinal
Watches

And much much more!



Jewellery Emporium
310 Guelph St. Unit 5, Georgetown Tel. 873-4405

HOLIDAY HOURS
MON-FRI 9am - 9pm
SAT 9am - 8pm
SUN 12pm - 5pm

Christmas giving in Acton

Donations and applications are now being accepted for the ASSIC Christmas Program. Each year we look forward to receiving practical gifts and money which is used to purchase greatly needed items such as blankets, pyjamas, track suits etc. for children of financially limited families. We accept donations of clothing, toys and knitted items to give out at Christmas to more than 50 families.

Are you, your business, sport or recreational team interested in sponsoring a child or two, purchasing a gift or giving new (or close to new) clothing and toys?

Unemployed or making a small wage? Unsure about Christmas this

year? Have children under the age of 15? Living in the Acton area? Visit Acton Support Services and Information Centre to enquire about the Christmas Needs Program, 19 Willow St. N., Acton 853-3310. We are a confidential service.

**ASSIC
Alert**

Acton Support Services and
Information Centre

Two flag symbols at GDHS

I'd like to comment on a recent article written by our Co-op student writer, Aaron Hughes. Aaron was reporting on the remarks of two speakers at a session called Images of Racism where it was alleged that our school flag was offensive.

The reference was to the Confederate flag that has been used in the past to represent Rebel teams. This same flag is also championed today by racist groups like the Heritage Front as a symbol of white supremacy.

What was not mentioned in the report were my remarks at the meeting attempting to provide some historical perspective on the issue.

In brief, four years ago our students, staff and community engaged in an extensive discussion about the appropriateness of the Confederate flag as a school symbol.

My conclusion was to support the Rebel "R" as an ongoing, inoffensive alternative symbol of our school. At the same time, while I could not endorse the use of the "Stars and Bars" outside the school, ie. at tournaments in other communities, students who made a personal choice to embrace the old flag within the school continued to have

**GDHS
Principal's Corner**

BRYN DAVIES

a right to do so.

Over the past four years, the "Rebel R" has become much more prominent and widely used by students and staff outside and inside the school.

That may be the reason why so many students at the session couldn't understand why "our flag" was so offensive.

As a result of new provincial legislation, it will be illegal for anyone to smoke anywhere on school property at any time.

This law will override our current school policy that has allowed students to smoke in a designated, fenced-in area on school property known as "the pit." Students will now face suspension if they are caught smoking anywhere on school property.

DR. K.W. DEICHERT

Family Practice and Anaesthesia
is pleased to announce
the opening of his new office with

Dr. C.A. Thompson

at

83 Mill Street, Suite 302

877-4123

New patients welcome

Personal Secretarial Services

"SAME DAY SERVICE"



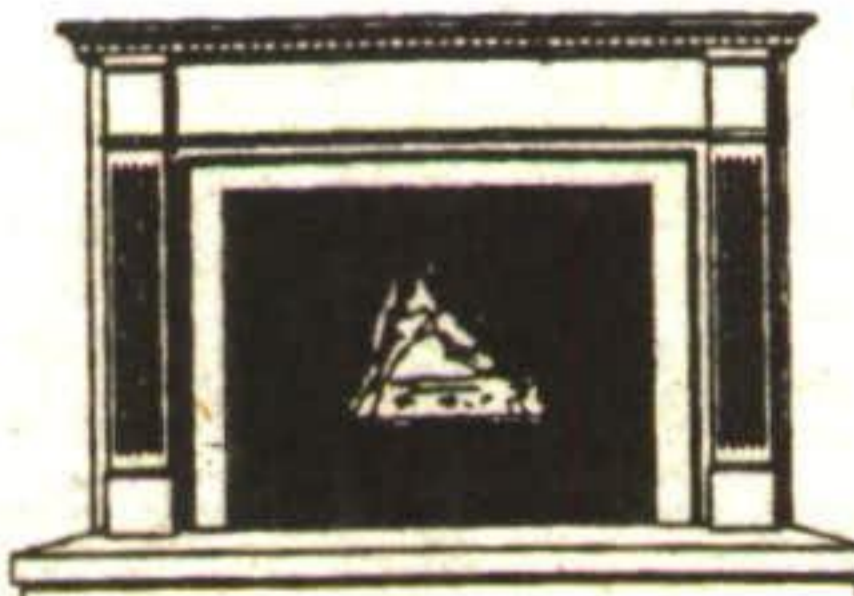
**CALL FOR ALL YOUR
SECRETARIAL NEEDS**

Also Available - Resumes & Essays

STRICTLY
CONFIDENTIAL

(905) 873-8240

Come and Visit Our New FIREPLACE SHOWROOM For a Large Selection of Working, Gas Fireplaces!



- Mid - High Efficiency Gas Furnaces
- Central Air Conditioning
- Electric to Gas Conversions
- Oil to Gas Conversions
- Fireplaces
- Electric Air Cleaner
- Humidifiers
- Boilers
- Duct Systems

Present this Ad for
\$100 OFF
any natural gas
fireplace
Expires Dec. 24/94

PEEL HEATING AND AIR CONDITIONING LTD.



Home Comfort Centre
10 Kennedy Rd. South (Olive Garden Plaza)

Head Office: **451-7085**

SHOWROOM: 451-5644

SHOWROOM HOURS: Mon.-Wed. 10-5, Thurs. & Fri. 10-8, Sat. 10-5

Kennedy	Queen	
		410
	Steeles	