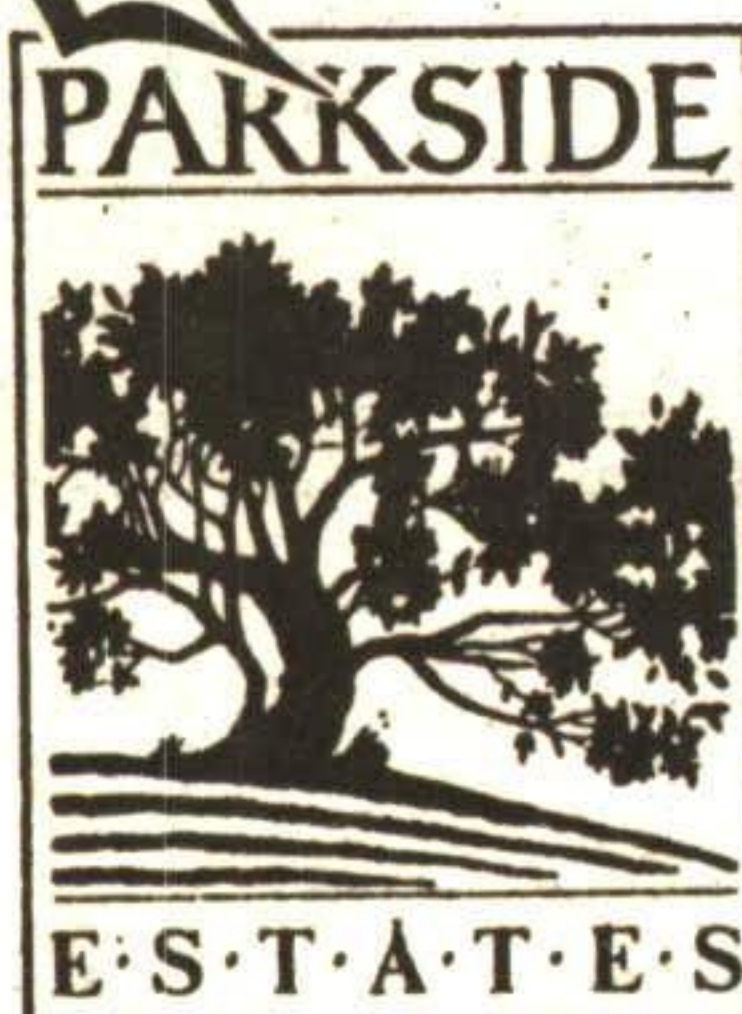


# CALLING FRIENDS & NEIGHBOURS

*Come Visit & See What We Are Offering*



## PARKSIDE ESTATES

### EDEN OAK HOMES

Located beside the Georgetown Fairgrounds, walk to North Halton Golf & Country Club, Downtown and Schools.

**STARTING AT:**

**\$229,000** & up for Bungalows

**\$239,900** & up for 2 Storeys

**VISIT OUR SHOWROOM**

**174 GUELPH ST.**

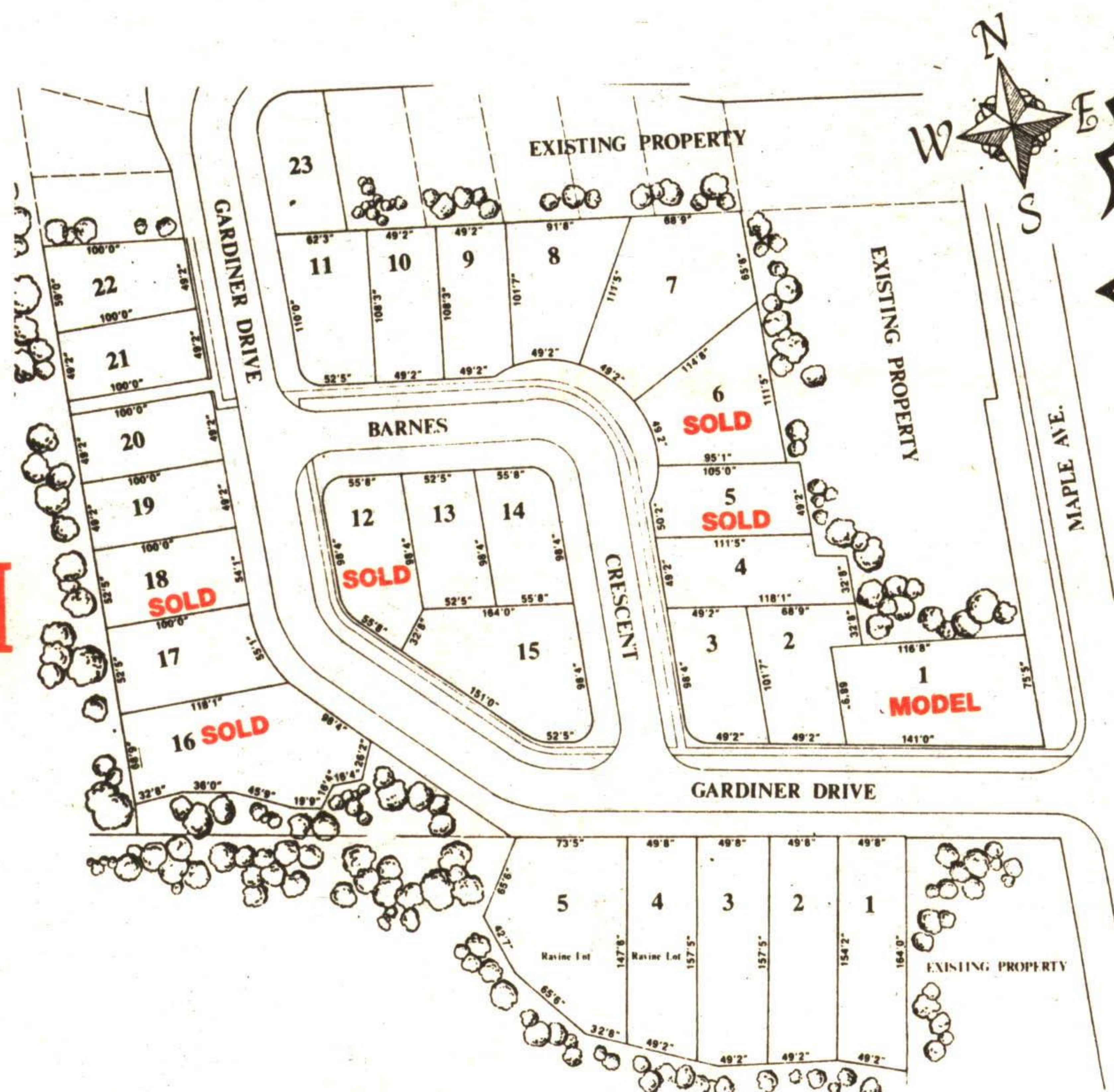
Mon., Tues., Wed. 4-8 p.m.

Thurs. 4-7 p.m.

Sat. & Sun. 12-5 p.m.

**Call 873-7609**

or 877-5165 & ask for Doug\*\* or Dianne\*\*



Site plan dimensions and specifications are approximate and are subject to change without notice. E.&O.E.

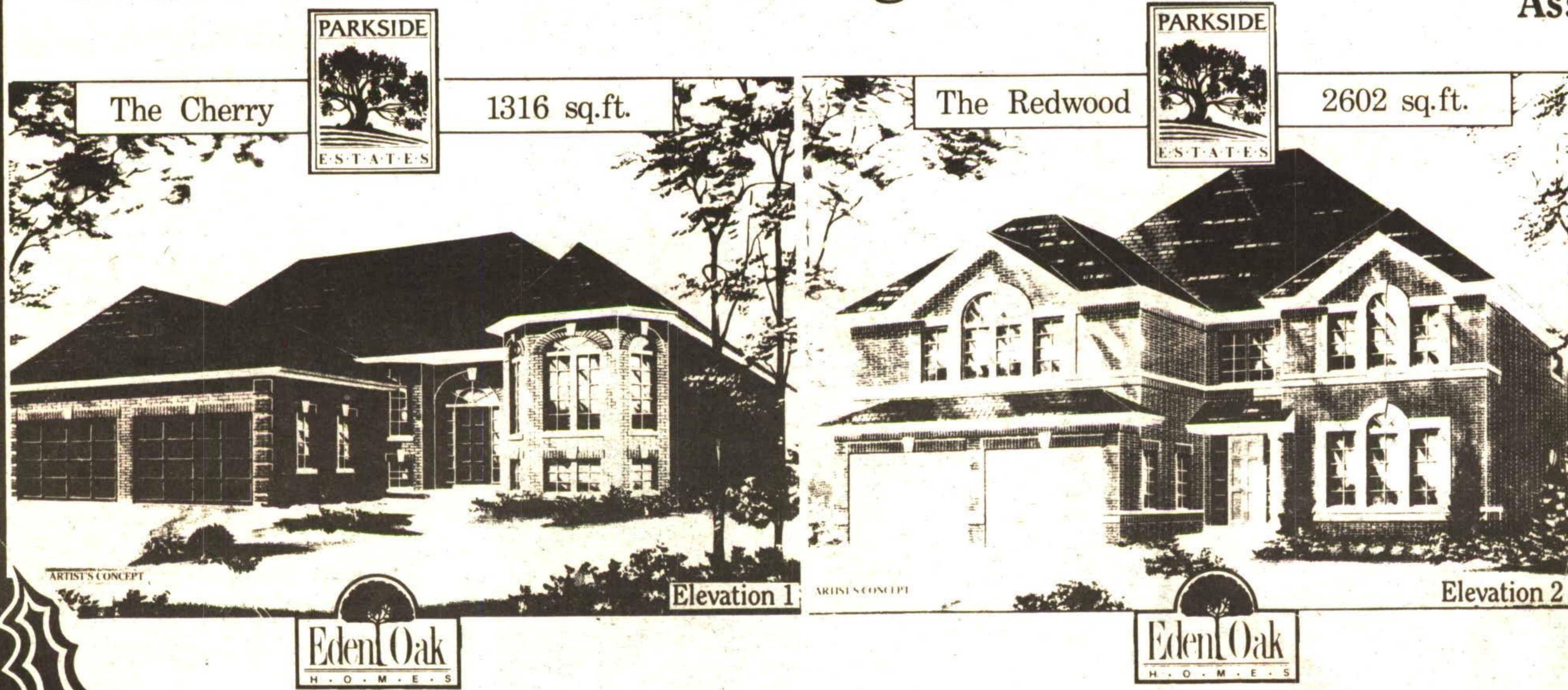
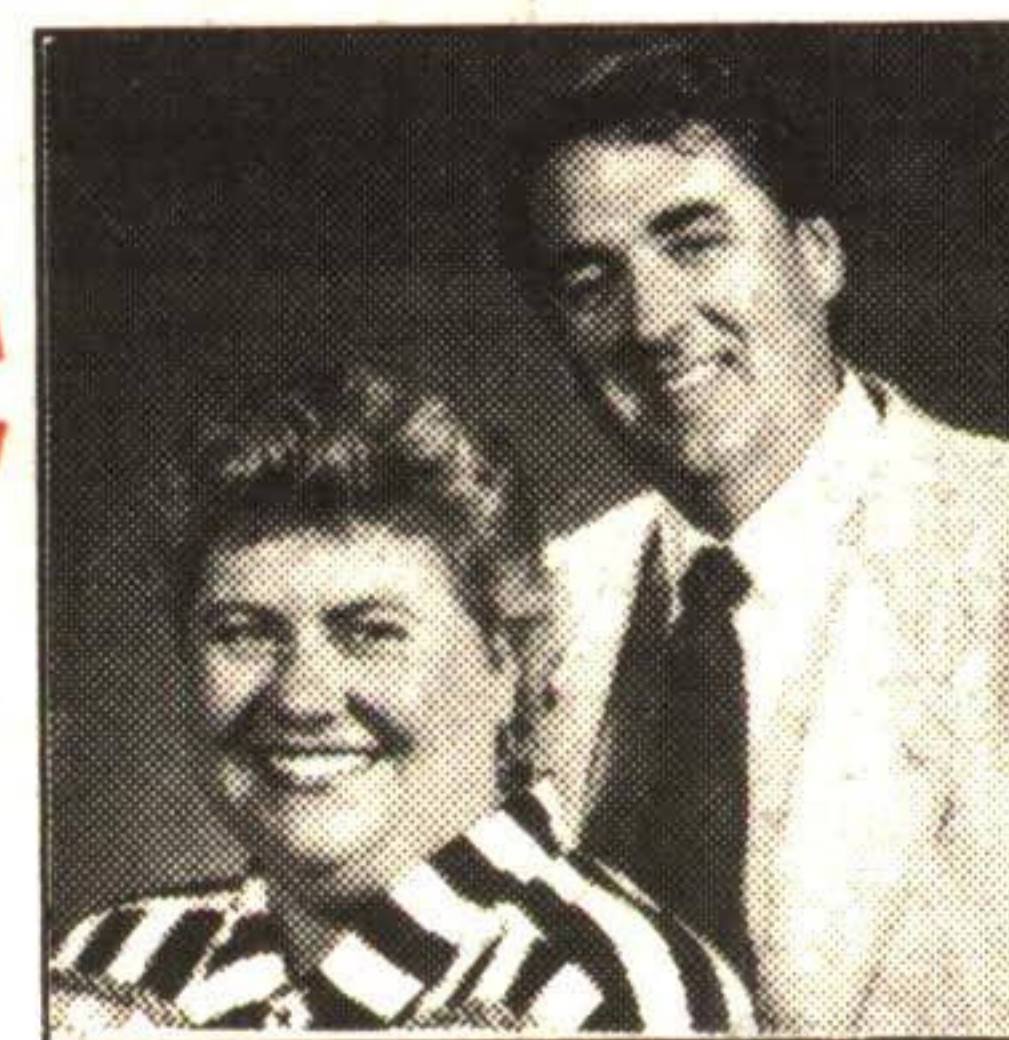
**SOLD EXCLUSIVELY**

by

**DOUG & DIANNE**

**PENRICE**

Associate Brokers \*\*



**67 SAMUEL CRES.**

**\$309,000**

**"The Olive"**  
3006 sq. ft.

Ready for occupancy early '95.  
Ceramics, gas fireplace, cathedral ceiling. Fantastic home on ravine lot.

To view call  
**Dianne\*\* & Doug\*\* Penrice**  
**877-5165**

#### FEATURES INCLUDED

- \*\* Ceramic tiles in foyer, kitchen & powder room
- \*\* Oak stairs, banister & pickets (as per plans)
- \*\* Thermopane casement windows
- \*\* All clay brick
- \*\* Double paved driveways - fully sodded front & back
- \*\* 50 foot lots
- \*\* Oak kitchen & bathroom cabinets

**ARTHUR F. JOHNSON & ASSOCIATES LIMITED REALTOR**

**877-5165**

874-3040 (Tor.) (519) 833-9714 (Erin)

247 Guelph St., Georgetown

