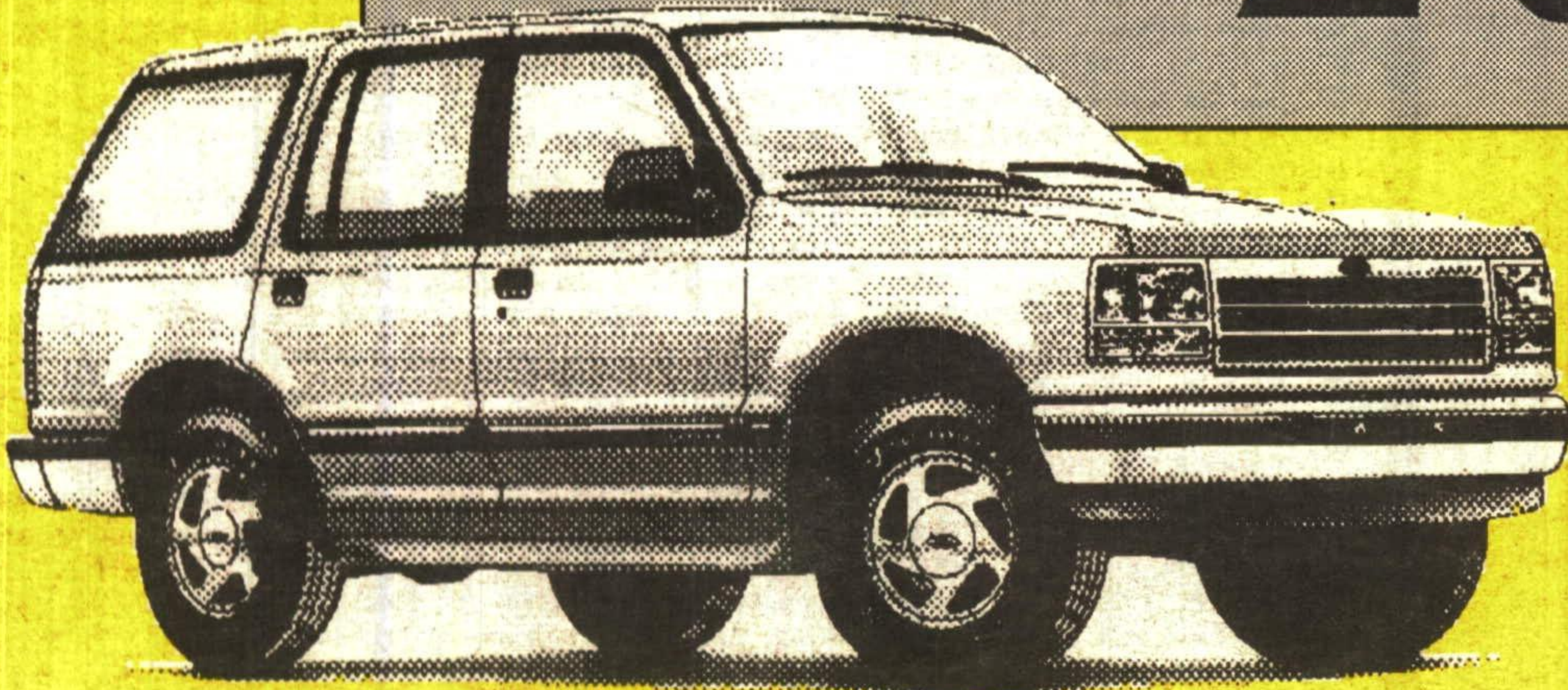


# SPECIAL FLEET PURCHASE!

1994 FORD  
EXPLORER XLT

\$ 26,995\*



AIR & AUTOMATIC • LEATHER  
BUCKET SEATS • LUGGAGE RACK  
• PREMIUM AM/FM STEREO WITH  
CASSETTE • POWER STEERING  
• POWER BRAKES • ELECTRIC  
DEFROST • TOUCH DRIVE &  
MUCH MORE. stk X8408

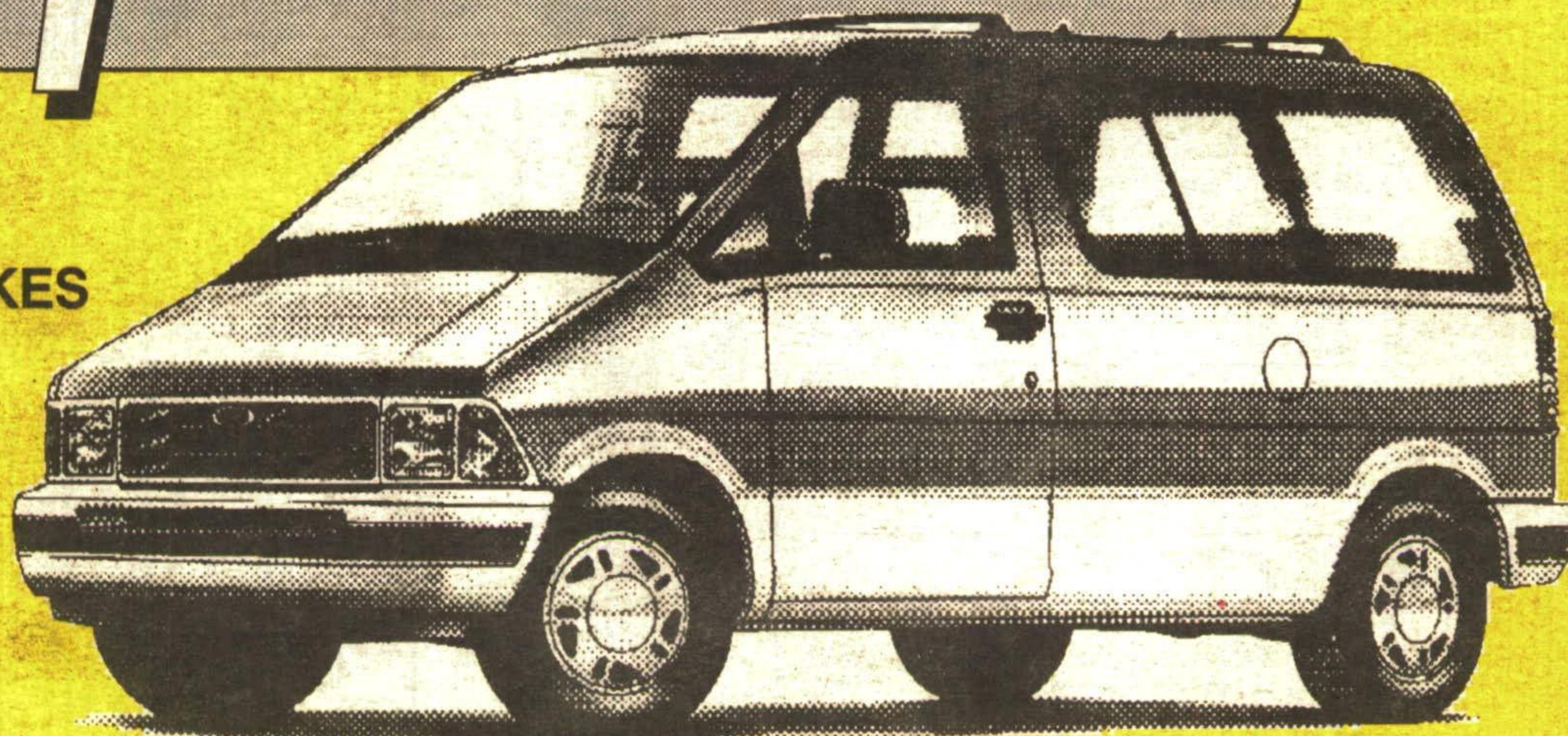
**FLEET PRICED TO CLEAR**

\$ 15,995\*

1994 FORD  
AEROSPORT

AIR & AUTOMATIC  
• CAPTAINS CHAIRS  
• REAR ANTI LOCK BRAKES  
• AM/FM STEREO  
• RUNNING BOARDS  
• ALUMINUM WHEELS  
• POWER STEERING  
• POWER BRAKES  
• 3.0 LITRE ENGINE  
& MUCH MORE.

stk # A8446



**FLEET PRICED TO CLEAR**

## NOBODY SELLS FORDS FOR LESS!

\*Freight (\$845 Aerostar, 695 Explorer), taxes and licence are extra.

**FREE  
SERVICE  
LOANER  
CARS**  
for our customers

**CAPITAL**  
FORD SALES

**#1  
IN  
CUSTOMER  
SATISFACTION**

Hwy. 7 at Delrex Blvd. GEORGETOWN 873-1626

### GREEN THUMB GARDENING



By CHRISTINE COLE

### NO HASSLE HOUSEPLANTS

Some plants have an innate ability to survive in unfavorable conditions. This makes them practically "foolproof" houseplants. Mother-in-law's Tongue, Peace Lily and Chinese Evergreen share these and other cultural features. They all have a common dislike to cold temperatures (60°F and lower). Low humidity problems experienced by most houseplants are not a factor with these succulent-like plants. They all survive and grow in poorly-lit areas, although they can withstand higher light conditions. And they are all relatively small floor plants - up to three feet tall.

Mother-in-law's Tongue has tall narrow and rigid strap-like leaves that grow straight out of the soil (has no true stem). The leaves are entirely mottled green or with yellow edges. The latter variety requires a bit more light to maintain the yellow color. This plant is architecturally unique and individual. It can truly be neglected for long periods of time and continue to live and grow.

Peace Lily has lance-shaped leaves that radiate from a central point, resulting in a pleasant rosette form. Unlike most other plants it will bloom (large white cup) regularly when placed in medium light conditions. However, its shiny green leaves make it an attractive foliage plant even when it is not blooming. It will perform well if it is never allowed to dry out.

The Chinese Evergreen also has thick lance-shaped leaves. The leaves vary from entirely green to green with speckles of silver or light green (depending on the variety). These varieties provide an interesting contrast to other plants.

All three of these plants are no-hassle houseplants that are able to survive in what often appears as impossible conditions. All you basically have to do is enjoy them.

Each week Christine Cole of Tuitman's Garden Centre and Landscaping, Highway 25, 1 mile south of Acton, 853-2480, will be presenting helpful tips and information to assist you in creating your garden show-place!

**TUITMAN'S  
GARDEN CENTRE**  
ACTON  
853-2480