

Peter Ellis

Associate Broker

1-519-836-2050

ROYAL LEPAGE

Residential Real Estate Services
951 Gordon Street
Guelph, Ontario N1G 4S1
Tel: (519) 836-2050



RETIRING OR COMMUTING

In an area of rolling corn fields, hardwood bush and fine rural properties, this well cared for 1500 sq. ft. bungalow with glass enclosed deck and private inground pool merits your consideration. \$235,000.

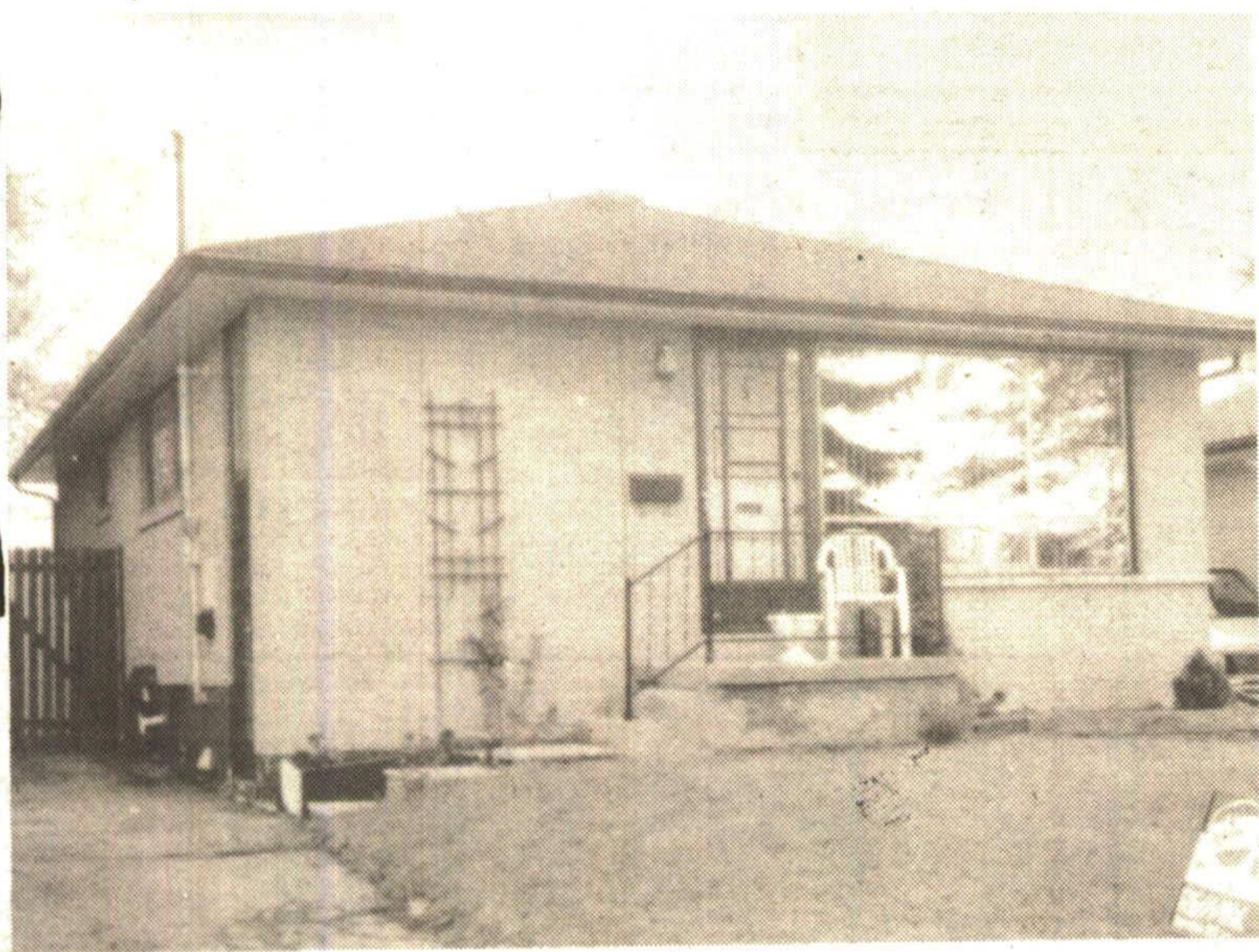


THE ITALIAN CONNECTION

Southern European influence is marked in the bold colours, interior and exterior archways, spacious wine cellar and entertainment areas of this beautifully finished 4 bedroom home on 9 acres with welcoming fountain, private soccer field and 20 x 20 barn/workshop. \$299,900.

2.5 ACRE ROCKWOOD PARCEL - Includes treed seclusion with wildlife, wet land, 500 ft. creek frontage and high, dry building site for your dream home. \$89,000. Call Peter Ellis** 1-519-836-2050.

\$159,500



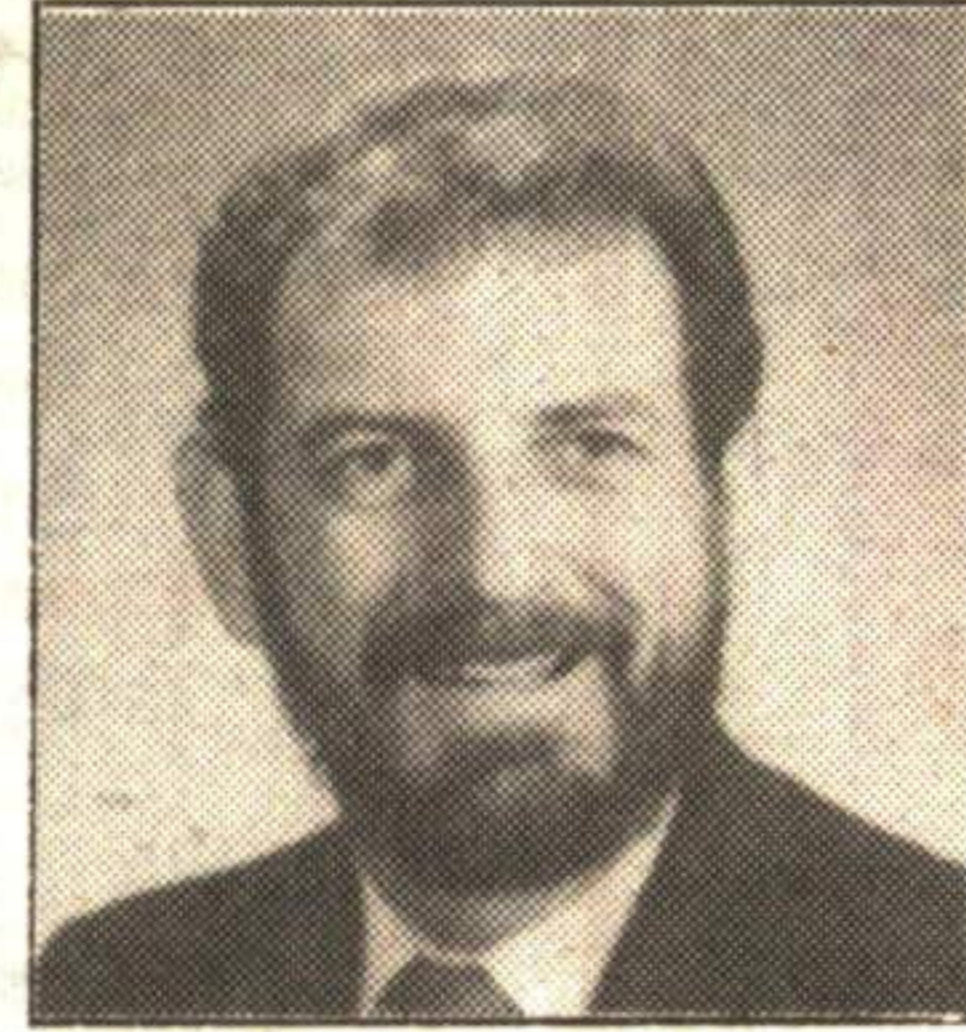
Great little 3 bedroom bungalow with 2 bedroom in-law suite. Help pay the mortgage or keep the whole thing rented. Your choice, but take action quickly! Won't last at this price. Call Kathy Monckton* today! 877-5211 364-94



KATHY MONCKTON*
Sales Rep

RE/MAX Suburban (91) Inc.
360 Guelph St., Georgetown

877-5211



Bruce Rodgers

RE/MAX

Suburban (91) Inc., Realtor
360 Guelph Street, Georgetown
Bruce Rodgers
Sales Representative*

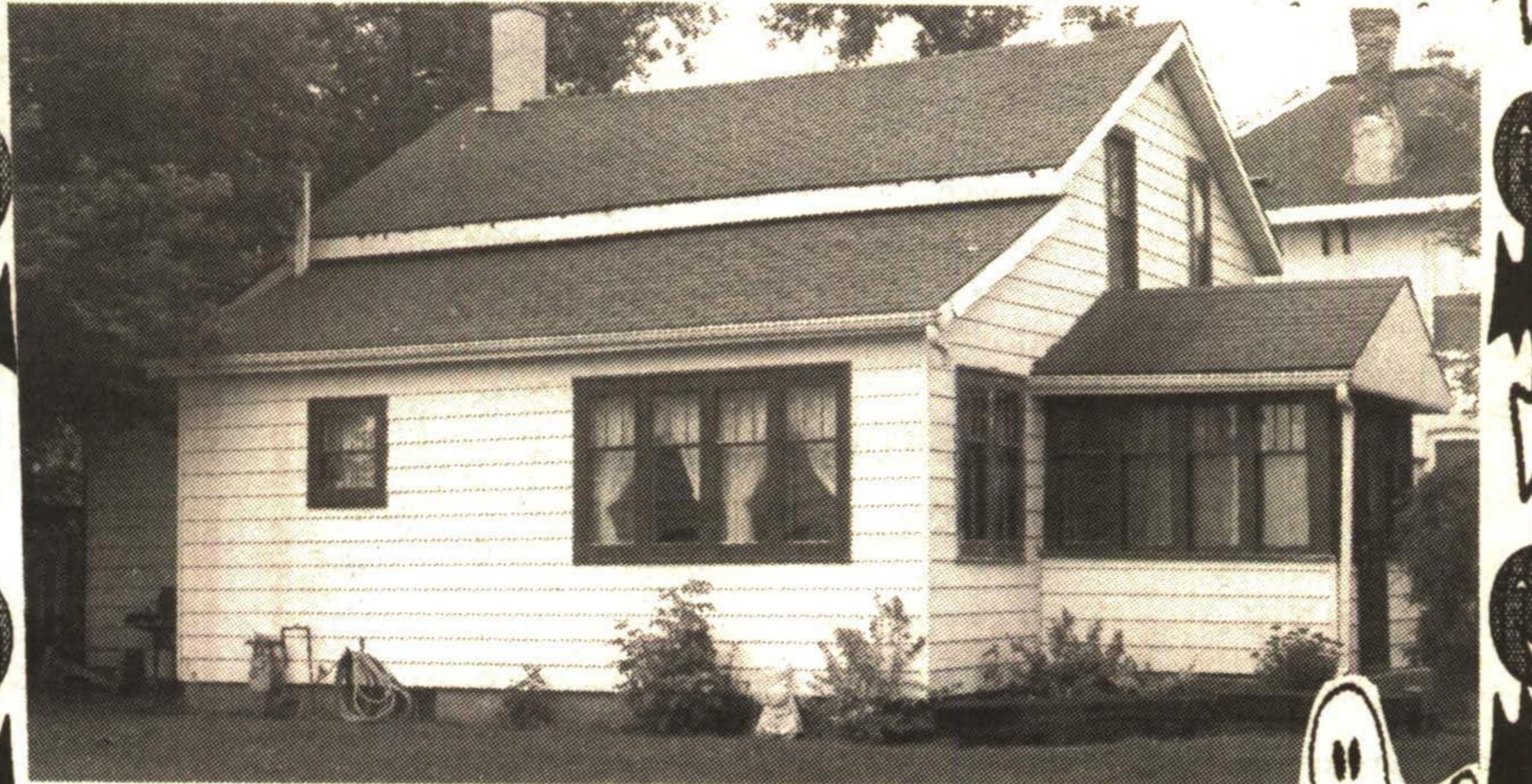
877-5211

Tor. 874-3051



Almost **180,000** resale homes have been purchased under CMHC's First Home Loan Insurance Program

CMHC SCHL
Helping to house Canadians

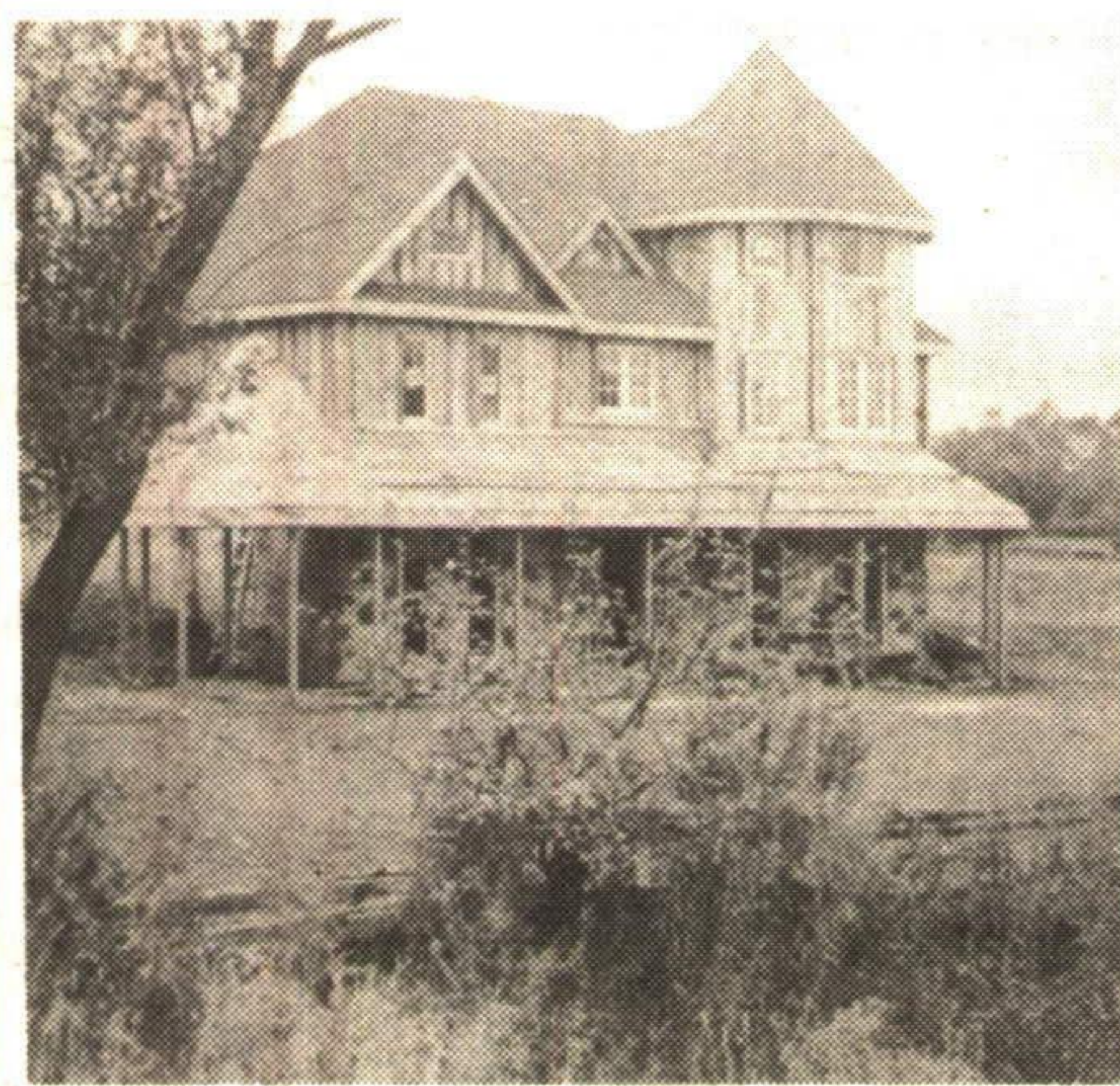


GREAT STARTER HOME

3 bedrooms, eat-in kitchen, main floor laundry, heated detached garage, workshop. \$126,900. RM110-94

ROYAL CITY REALTY (HALTON) LIMITED

Something special



Nestled on a hilltop overlooking the Erin Heights Golf & Country Club sits this majestic on a one acre lot. The old world craftsmanship creates over 2,500 sq. ft. of luxury living space. Full Price \$249,900.

This charming Victorian style home is situated on a 5 acre lot in Ballinafad of approx. 1700 sq. ft.



William (Bill) Pshyk
Sales Representative

Bus: (519) 853-2074
Tor: (905) 450-9344
Res: (905) 877-6702
Fax: (519) 853-2076
24 Hour Pager

DEMAND THE BEST

