

LOOKING TO RENT AN INDUSTRIAL UNIT? COME TO ...



55 Sinclair Avenue, Georgetown
AND RENT FOR ONLY
\$4.90 per sq. ft.

(Taxes, Maintenance and Interest Included)

- * Unit sizes starting at 1320 sq. ft.
- * 10 x 10 and 12 x 10 drive thru doors
- * some units have finished offices
- * fully sprinklered * 600 volts, 3 phase, 30 amps to 120/208 3 phase electrical service

RENT YOURS NOW BY CALLING RUD WHITING* AT

RE/MAX Suburban (91) Inc.

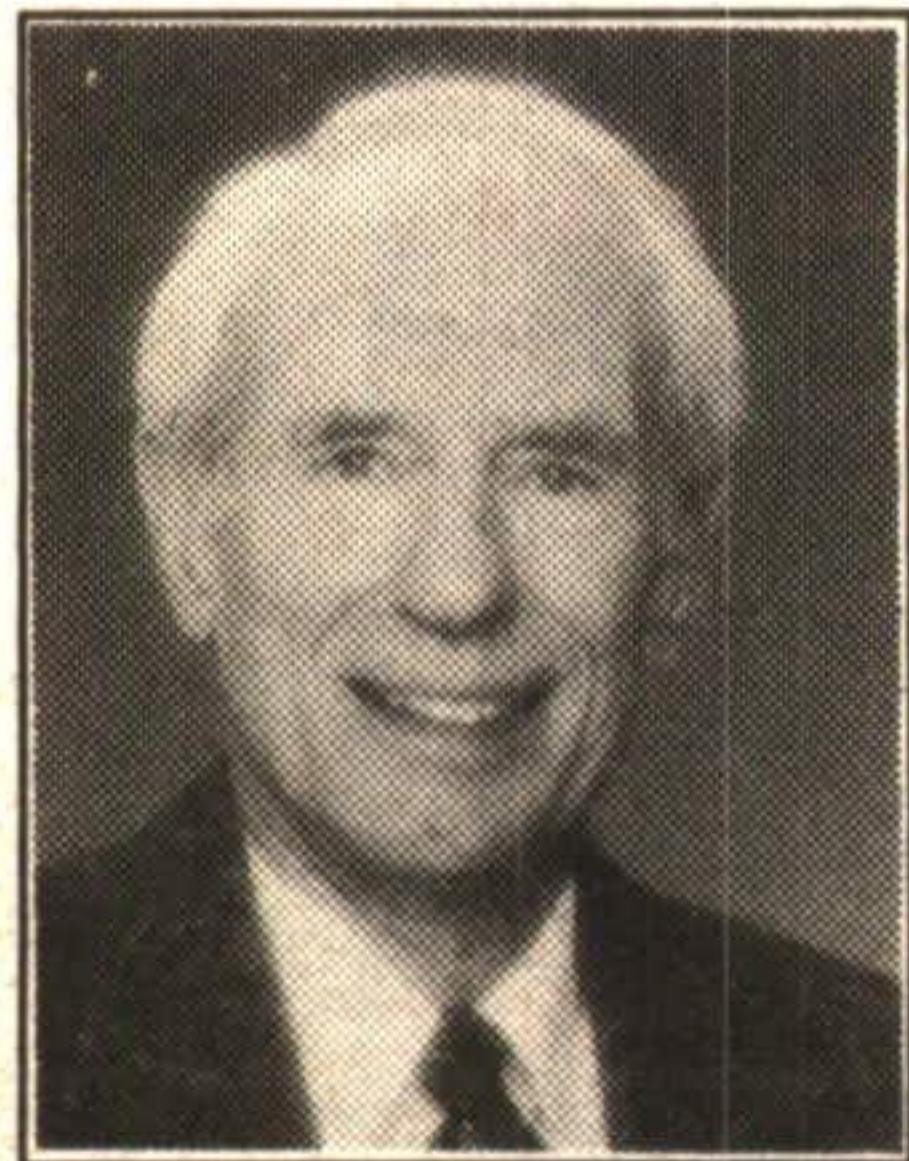
360 Guelph St., Georgetown

877-5211

Tor. (905) 874-3051

25 Hour Paging Service

* Sales Representative



DORA MACKINNON**
**Associate Broker
Res. 877-1430

SOLD
ARTHUR F.
**JOHNSON &
ASSOCIATES**
LIMITED REALTOR
877-5165

24 HR. PAGER
Toronto
874-3040



ELIZABETH DOELL*
**Sales Representative
Res. 873-3938

NEW LISTING



COUNTRY LIVING ON THE EDGE OF GEORGETOWN

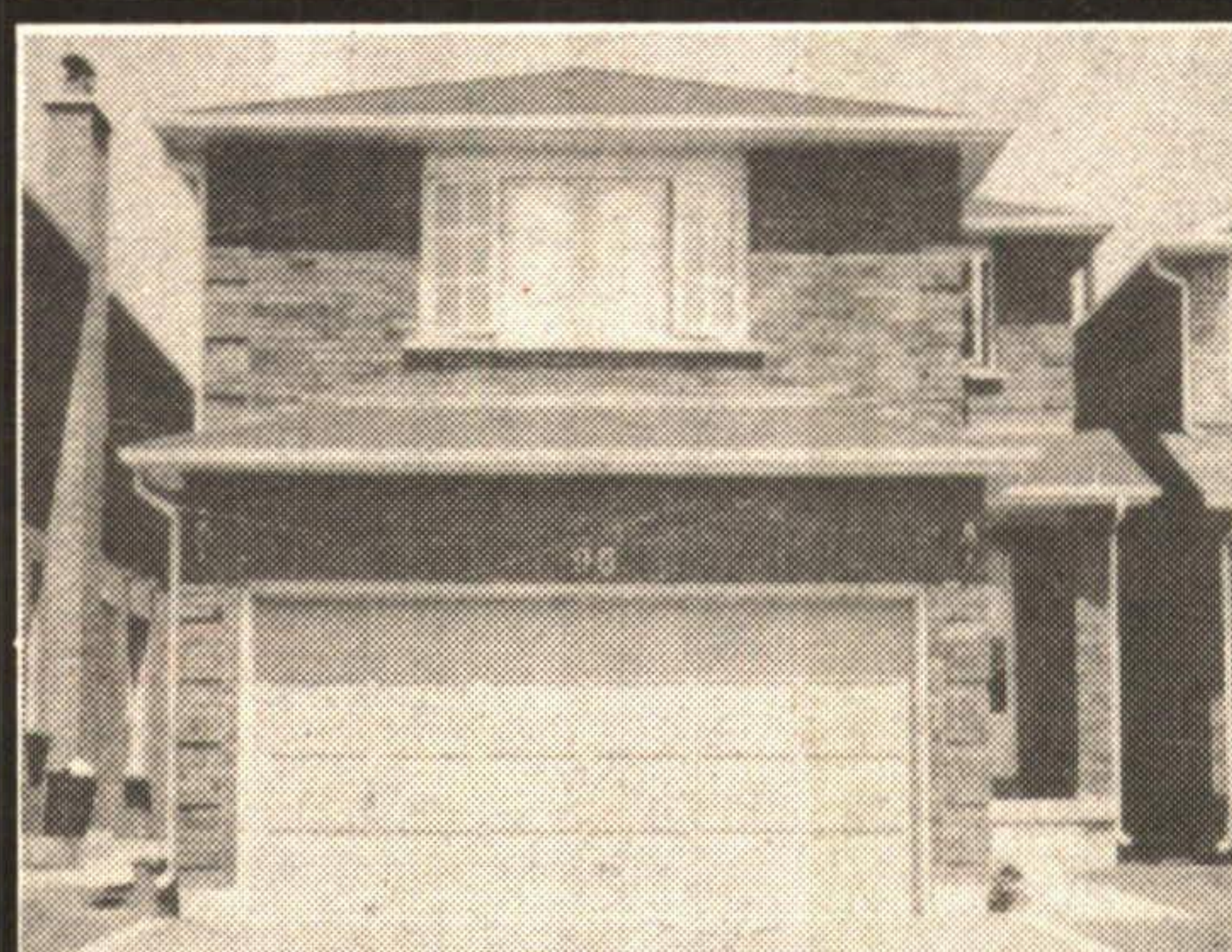
Almost an acre. Beautifully landscaped near Wildwood. Lovely 4 bdrm. home offers main fl. fam. rm with FP, spacious kit. has sliders to 12 x 16 screened sunroom, skylight, master bdrm with ensuite. Only \$289,900. For details dial Dora MacKinnon**. 94-2-562

DRASTIC PRICE REDUCTION



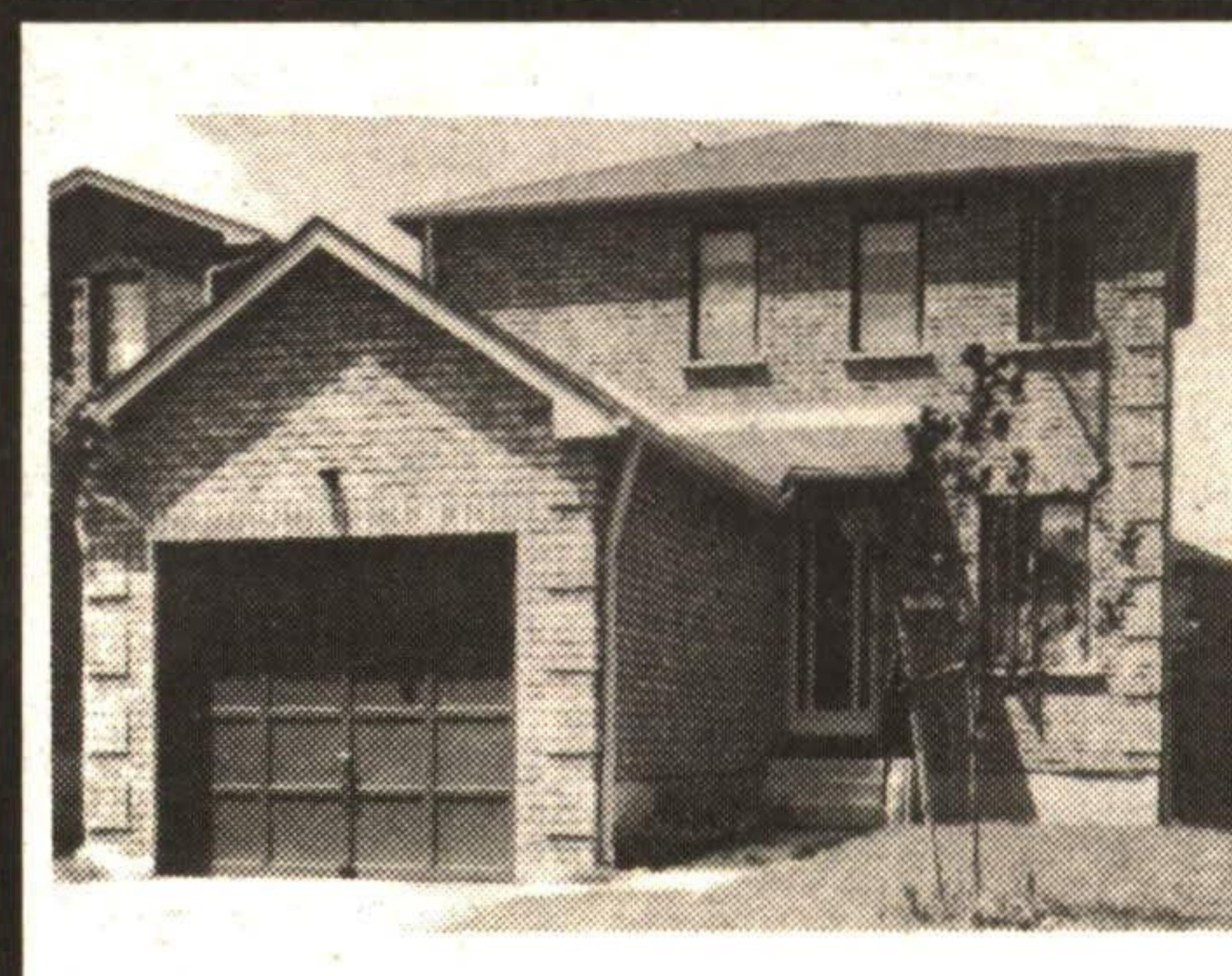
THE DISCERNING BUYER

Will appreciate the custom quality, the value and the beauty of this lovely 4 bdrm. home. Features include a ensuite jacuzzi, tub, skylight, double FP, incredible kit. It simply must be seen. List Price \$329,000. For details call Dora MacKinnon**. 94-2-559



6.9% MORTGAGE

Features of this lovely 2200 sq. ft. home: 2 oak staircases, fireplace, ceramics, huge kitchen, 3 bedrooms, master ensuite. Vendor wants sold. List Price \$225,000. View this beauty with Dora MacKinnon** or Elizabeth Doell*. 94-2-



VENDOR SAYS SELL

Drastic price reduction. Now only \$167,500, for this nearly new 3 bedroom on a fully fenced lot, with 2 tier deck. Hurry try your offer with Dora MacKinnon** or Elizabeth Doell* today. 94-2-448



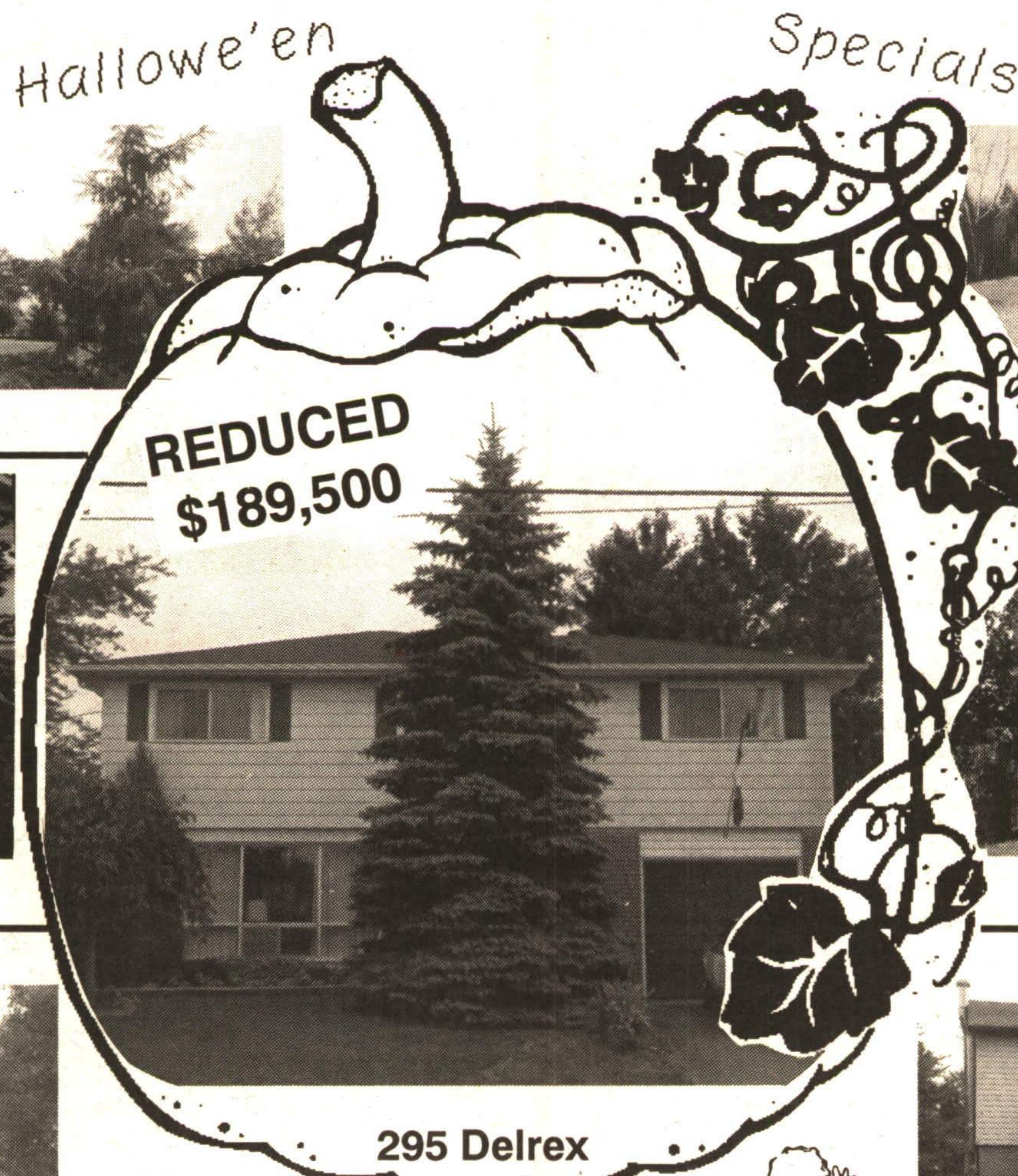
Jackie Greenwood
Sales Rep.

NRS Brand Realty

45 Mountainview
873-0300

Be "witching"

Jessie Jacobs
Sales Rep.



Wanless Road \$359,000



10th Line, Halton Hills \$324,900



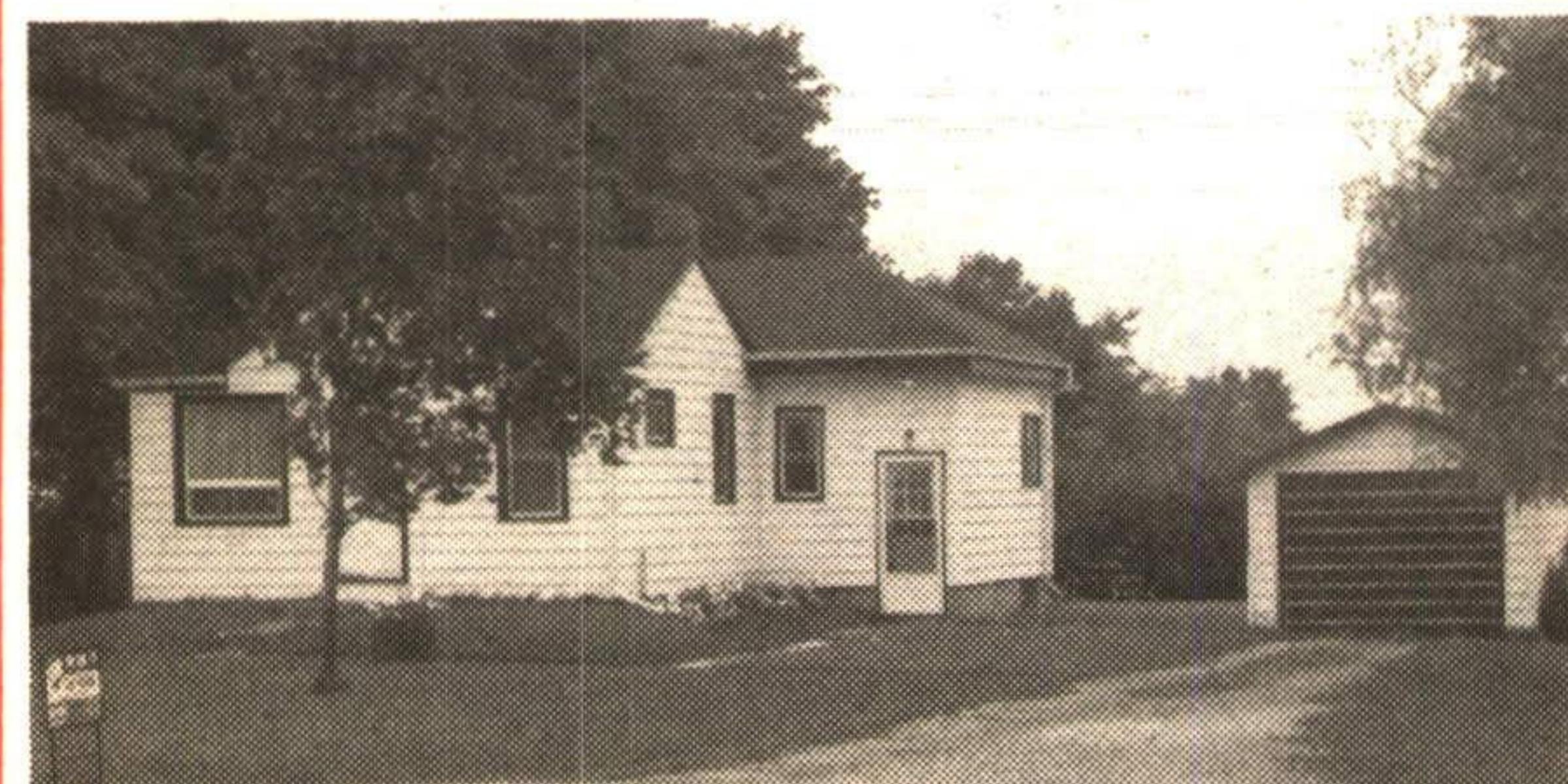
Corey Circle \$142,900



295 Delrex

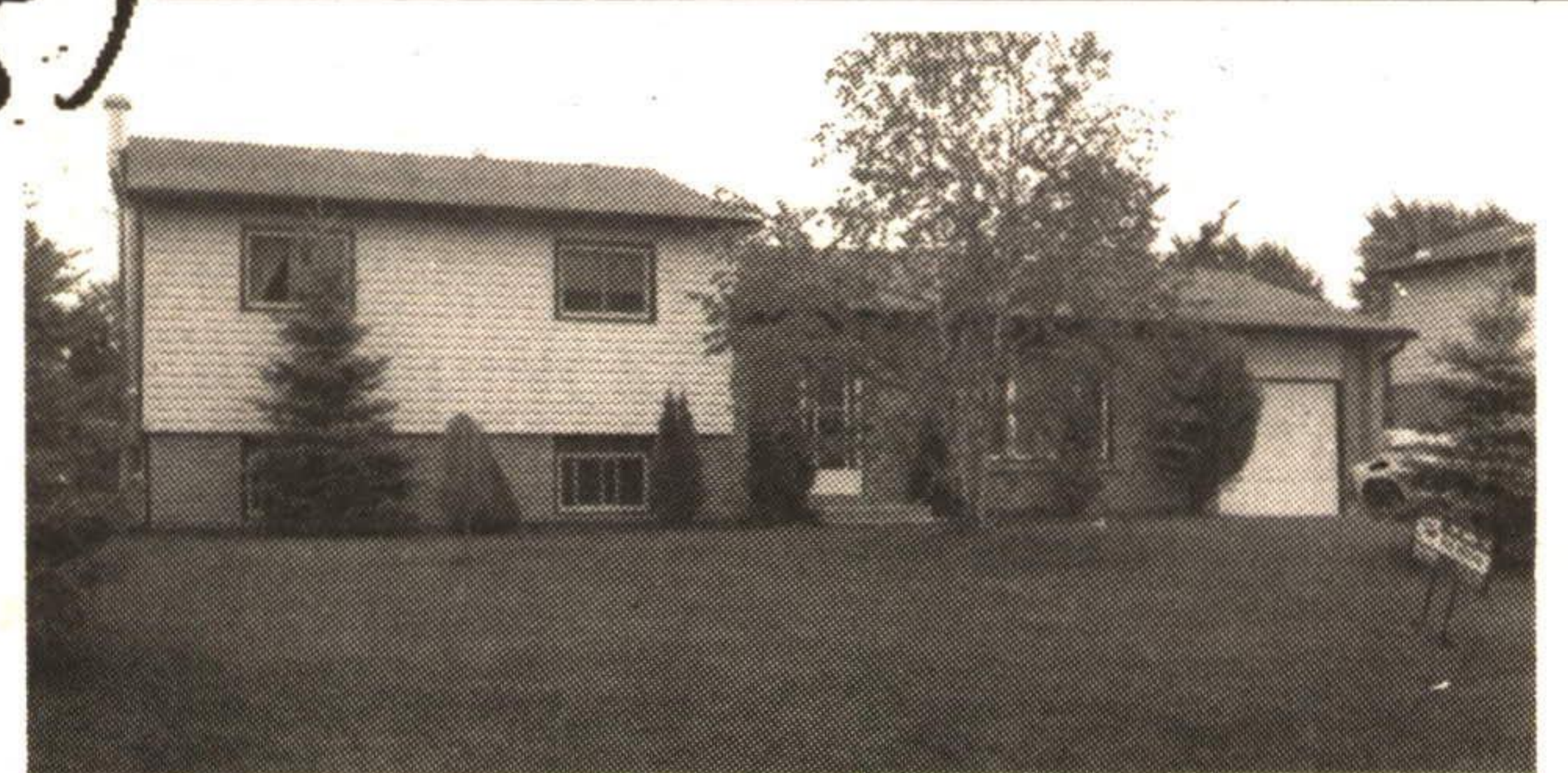


Winston Churchill \$259,000



Hwy. 25 - N. of Acton \$154,900

Take a "Boo" at these terrific homes!



44 Douglas Cres., Hillsburgh \$174,900