

Fall Car Care...

Getting your car ready for winter

Things to try and buy

A fall morning or afternoon spent getting the car ready for winter can be a rewarding experience.

A little care now — some simple, basic maintenance and a few things that can be picked up at a favourite service station, auto supply store or supermarket — can contribute immeasurably to peace-of-mind wintertime motoring.

First, using a spark plug wrench, inspect the business end of the plugs or have the job done by an auto technician. It takes but a few minutes to determine if the plugs are badly carboned or otherwise corroded. If they are, replace them.

Since cold starts put an extra strain on the ignition system, many motorists routinely install new plugs at this time of the year. If the car is an older model, installing a new set of points and a new condenser also may be advisable.

How's the Battery?

If the battery if the refillable type, make sure it is filled with water, and check to see that the connections are tight and corrosion-free. A mild solution of baking soda will quickly eliminate acid buildup where the cables connect with the battery. Make sure the battery is free of cracks and fully charged.

Check all fluid levels, topping up where necessary. Replace fluid that's dirty or rusty. Filters are an important consideration. If the automatic transmission, fuel or air filters are being clogged, have them replaced.

Pick up some gas-line anti-freeze; when the temperature drops critically, have it handy to help starting and prevent fuel-line freeze-up.

The cooling system should be checked to make sure the anti-freeze is up to strength, adding fresh anti-freeze if necessary. Flushing the system is a good idea.

Look for cracks and sponginess

in hoses, and loose, cracked or frayed belts — install new ones. Make sure all hose connections are tight. Also check or have checked the hose clamps, radiator, pressure cap and thermostat.

Check All Tires

Cool weather invariably lowers tire pressure. For accuracy, purchase your own tire gauge and methodically check all the tires, including the spare, filling with air as necessary. Be sure there is adequate tread for sure stops and safe driving over slippery surfaces.

Have the car's automatic choke cleaned and adjusted. If it doesn't open when the engine is warm, gasoline is wasted.

Make sure the alternator and voltage regulator are functioning properly.

Inspect the exhaust system to make sure it's tight and free of leaks. An exhaust system spewing carbon monoxide fumes can be dangerous.

Replace worn or poorly functioning wiper blades that are built to take the worst that winter can dish out.

Make sure the water in the windshield washer reservoir contains sufficient solvent to prevent freezing and to coax peak performance from the wipers on a freezing, snow-covered windshield.

Buy Some Concentrate

Plan to pick up a can or two of concentrated windshield washer anti-freeze to keep in the car.

A 16-ounce container of concentrate occupies a fraction of the space that non-concentrate requires and in emergencies, sub-zero temperatures or particularly bad driving conditions, it can be used undiluted.

Make sure both heater and defroster systems are working.

Turn on the headlights and observe the high beams. At the same time, check the operation of turn signals, taillights and back-up lights.

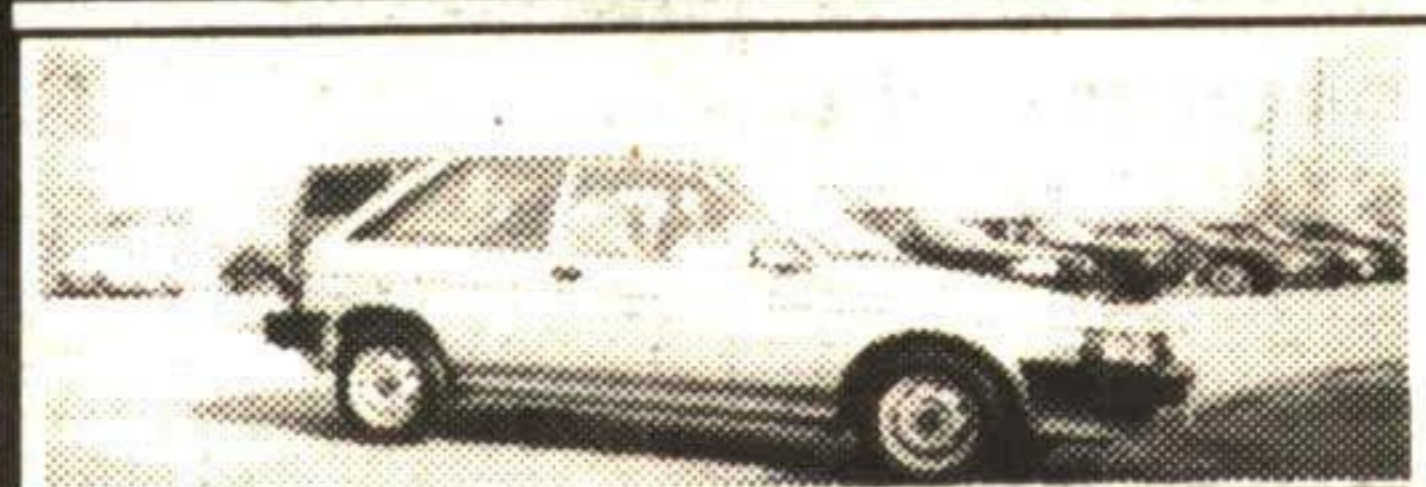
WALLACE USED VEHICLE CLEARANCE SELL-A-THON

ON THE SPOT
FINANCING
FROM 9.25%
OAC

1 WEEK ONLY
OCT 22ND
TO OCT 29TH

MINIMUM 6 MONTH,
10,000 km POWERTRAIN
WARRANTY STANDARD
ON ALL VEHICLES

UNDER \$12,000



'88 TERCEL LIFT BACK
Auto, AM/FM, lt. blue,
in clean condition
with 64,000 km. **\$5,998**



'89 SKYHAWK COUPE
White, 4 cyl, auto, tilt,
cruise control, AM/FM
cass., only
69,000 km. **\$6,488**



'90 SUNBIRD GT COUPE
Red, 5 speed, air cond.,
AM/FM cass., alloy
wheels, tilt, sunroof,
& more **\$9,488**



'90 PONTIAC TEMPEST
V6, auto, air cond.,
2 tone white
& silver. **\$9,446**



'91 GRAND AM COUPE
White, quad 4, auto, sunroof,
power windows
& locks, tilt, cruise,
65,000 km. **\$10,488**



'92 BERETTA COUPE
Red, auto, 4 cyl,
AM/FM, sporty,
46,000 km. **\$11,288**



'93 SATURN SLI
Dark blue, 5 speed, AM/FM stereo,
P/S, P/B, only
48,200 km.
1 owner. **\$9,888**

TRUCK SPECIALS



'92 PLYMOUTH VOYAGER SE
White, 7 pass, V6, auto, air cond., power locks,
deep tint, running
boards, AM/FM cass.,
tilt, cruise, 76,000 km. **\$15,888**



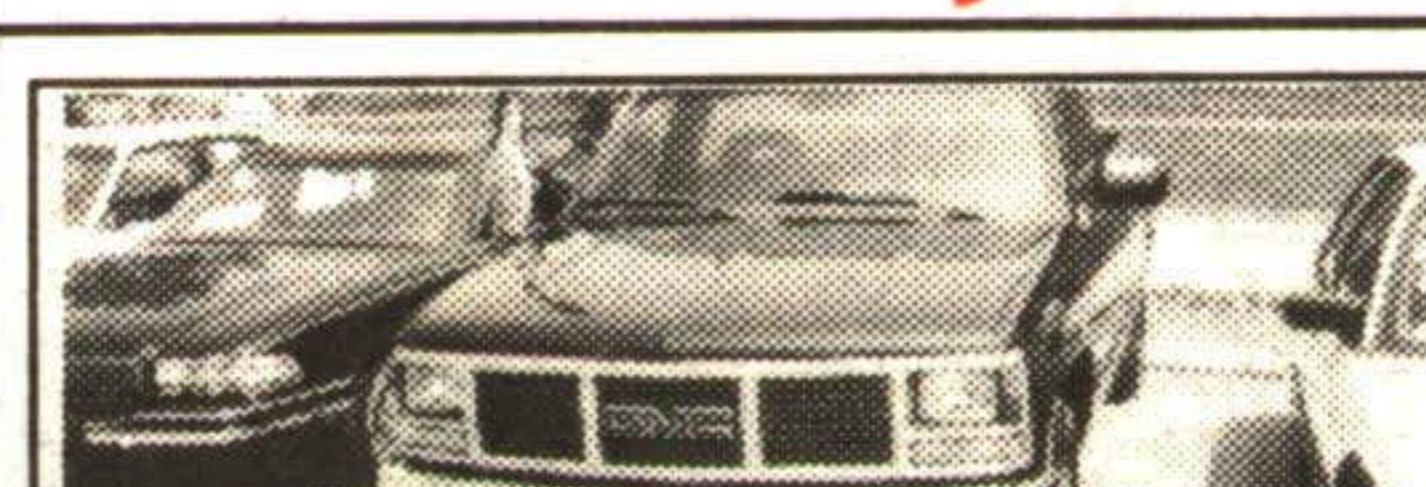
'94 SUBURBAN 4X4
Blue & silver, V8, auto, air cond., rear heater, bucket
seats, power windows &
locks, tilt, cruise, AM/FM
cass, fully loaded. **\$36,888**



'94 CHEV EXT. CAB
1500 turbo diesel, bright red, auto, 4x4, power bucket seat,
console, tilt, cruise, AM/FM
cass, power windows
& locks, only 14,500 km. **\$32,998**



'94 GMC 3/4 TON EXT. CAB 4X4
Wine & silver, 6.5 L turbo diesel, auto,
power bucket seat
console, tilt, cruise,
AM/FM cass. **\$33,488**



'93 GMC 1500 WORK TRUCK
Dark blue, V8, auto, AM/FM stereo, cup
holders, sport
stripe & more. **\$13,888**



'94 CADILLAC SEDAN DEVILLE
White, leather, fully loaded in cadillac
style, only
16,800 km. **\$35,988**



'94 CADILLAC STS SEVILLE
Dark green, moon roof, V8, Northstar engine, 296 H.P.,
auto, leather, chrome
wheels, heated mirrors
& windshield, fully loaded. **\$46,888**

MID SIZE VALUES



'91 6000 LE
V6, auto, dark blue, tilt,
AM/FM cass.,
wire wheels,
& more. **\$9,488**



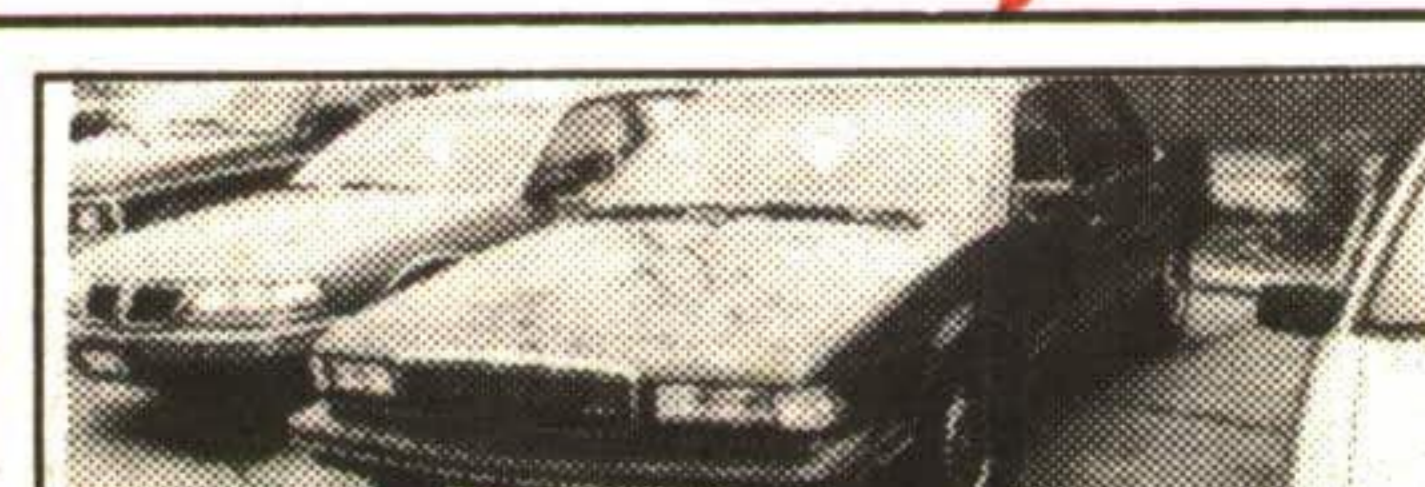
'91 GRAND AM SEDAN
Metallic grey, auto,
air cond., AM/FM
stereo, in mint
shape. **\$9,688**



'94 PONTIAC SUNBIRD LE COUPE
White, 5 speed, AM/FM cass.,
1 owner,
26,000 km. **\$12,288**



'91 REGAL GRAND SPORT
White & silver, V6, auto, air cond., digital dash,
power windows & locks,
tilt, cruise, AM/FM cass.,
& alloy wheels. **\$14,888**



'94 BUICK CENTURY SPECIAL
Dark blue, V6, 3.3L, auto, air cond.,
tilt, cruise, AM/FM
cass., only
31,000 km. **\$16,988**



'92 GRAND AM SE 4 DR. SEDAN
Quad 4, auto, air cond., power windows &
locks, tilt,
cruise,
AM/FM cass. **\$10,998**

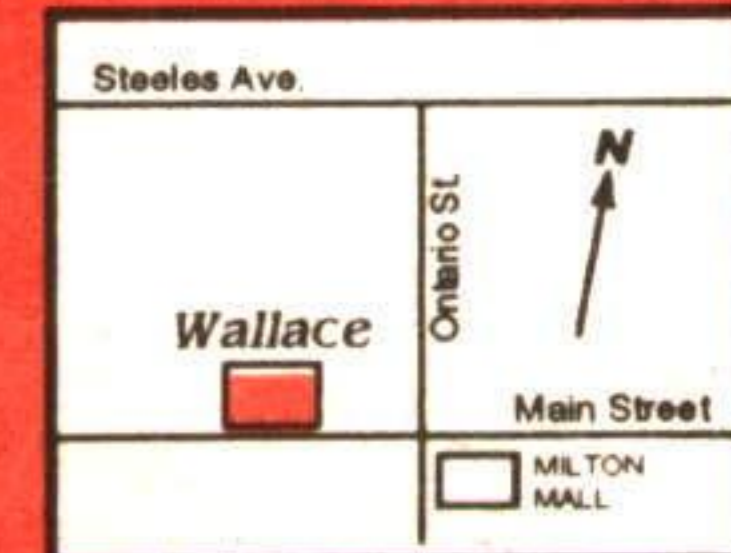
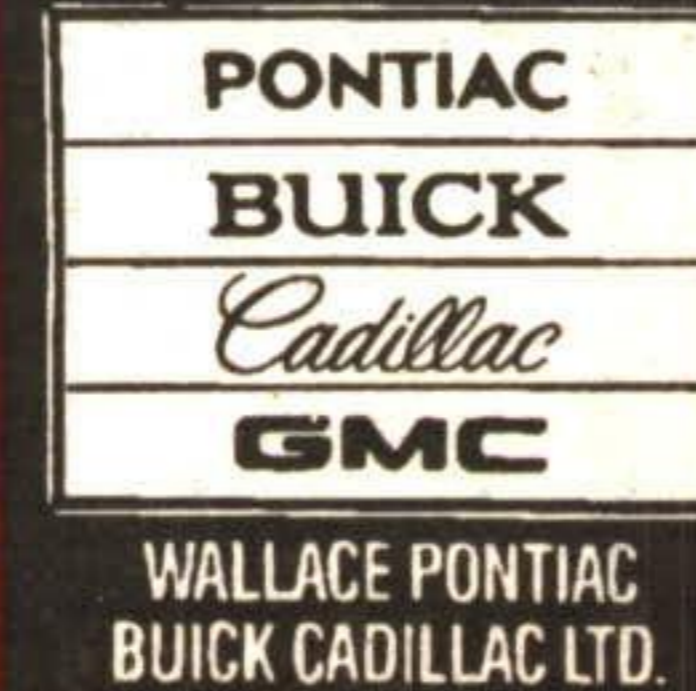


'93 SUNBIRD SEDAN'S
2 to choose- 1 white, 1 blue, 4 cyl., auto, air cond.,
AM/FM stereo, power
steering & brakes,
factory warranty balance. **\$10,888**

TAXES & LIC. EXTRA

Wallace

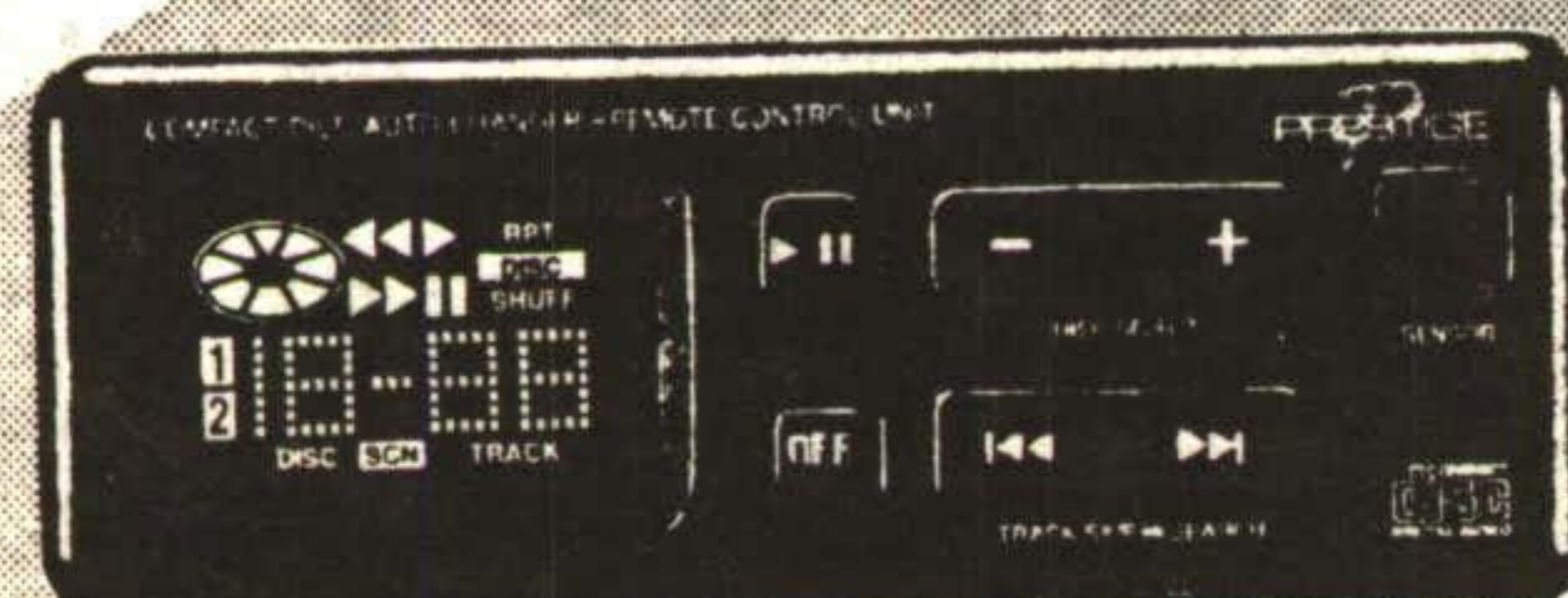
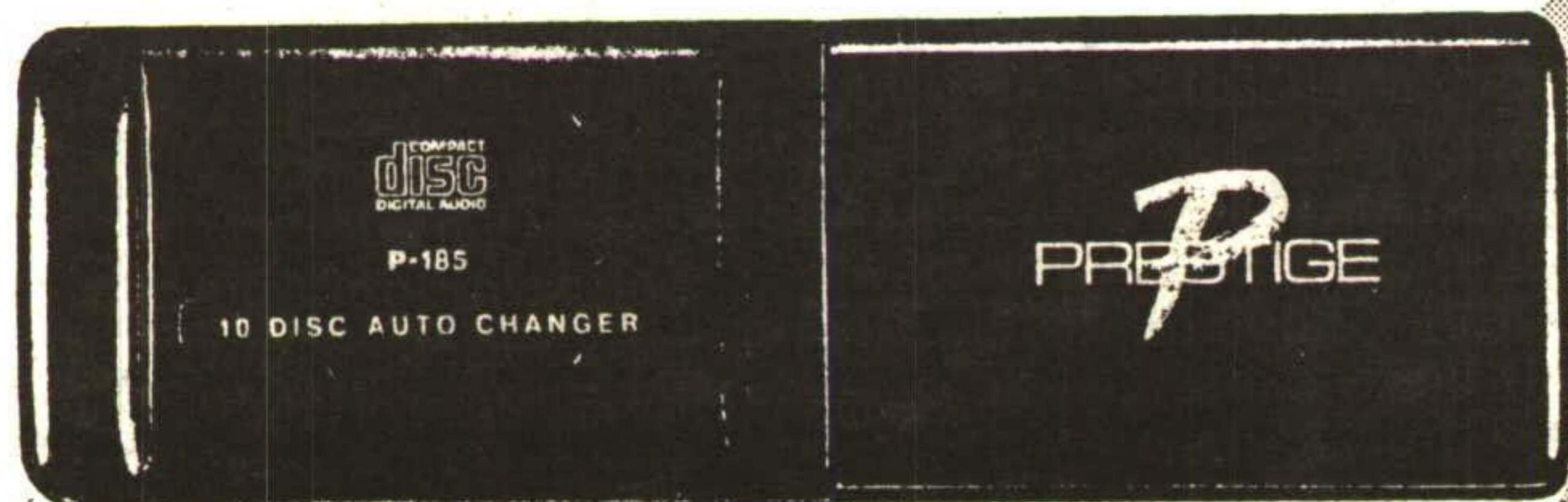
WE SERVICE WHAT WE SELL
• ALWAYS MORE TO CHOOSE •



409 MAIN STREET EAST IN MILTON 878-2355

ADD A CD CHANGER TO YOUR EXISTING CAR STEREO*

*(ADAPTS TO ANY CAR STEREO INCLUDING FACTORY SYSTEMS)



COMPACT
disc
DIGITAL AUDIO

AVAILABLE IN 10 AND 6 DISC MODELS

\$499⁹⁵
installed

GEORGETOWN CUSTOM CAR SOUND

55 SINCLAIR AVE. 877-2425

• SALES • SERVICE • INSTALLATION
SERVING HALTON HILLS AREA SINCE 1978