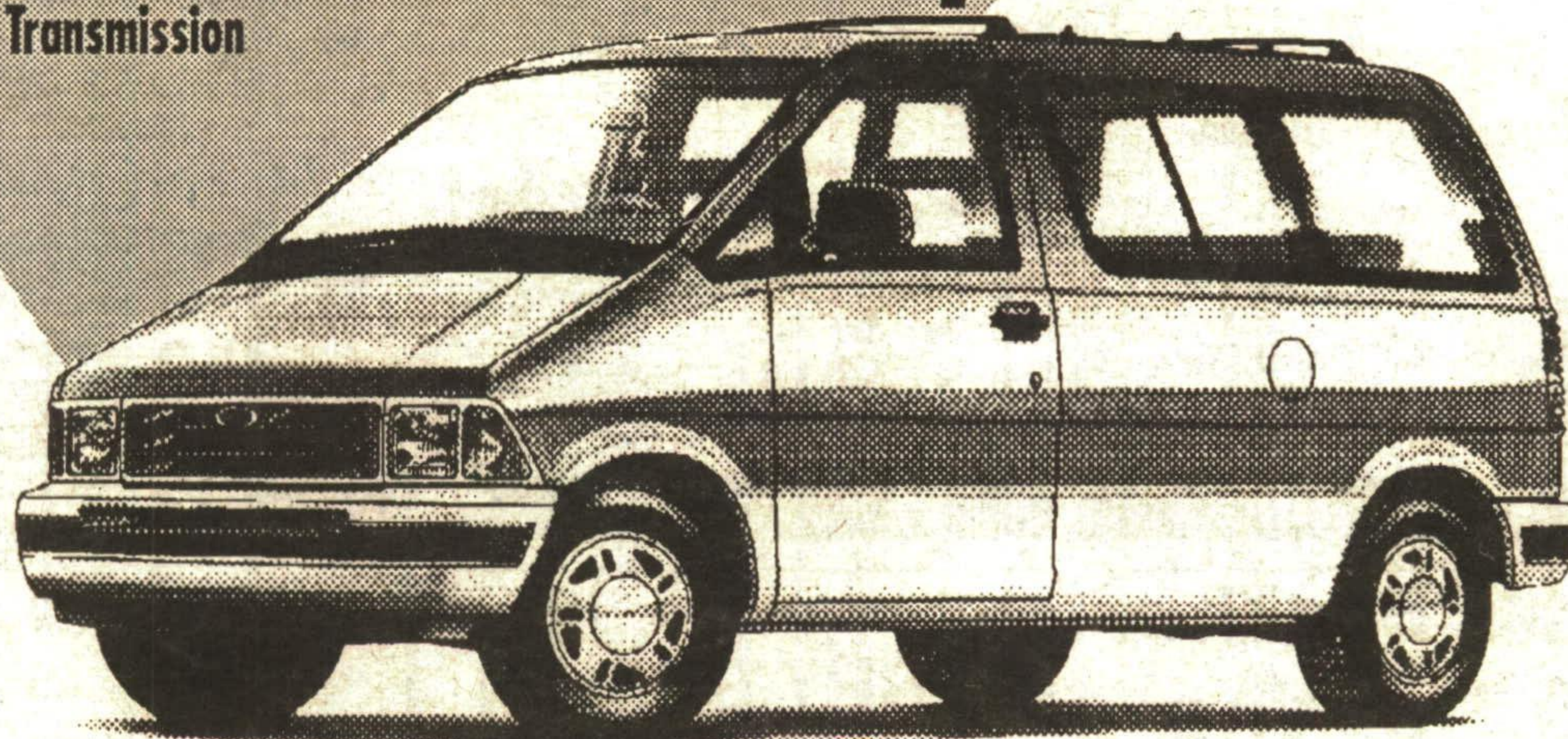


# NOBODY SELLS FORDS FOR LESS

## Brand New 1994 Aerosport XL

- 3.0 litre engine with Automatic Transmission
- air-conditioning
- rear anti-lock brakes
- drivers side air bag
- am/fm stereo
- captain's chairs
- running boards
- aluminum wheels



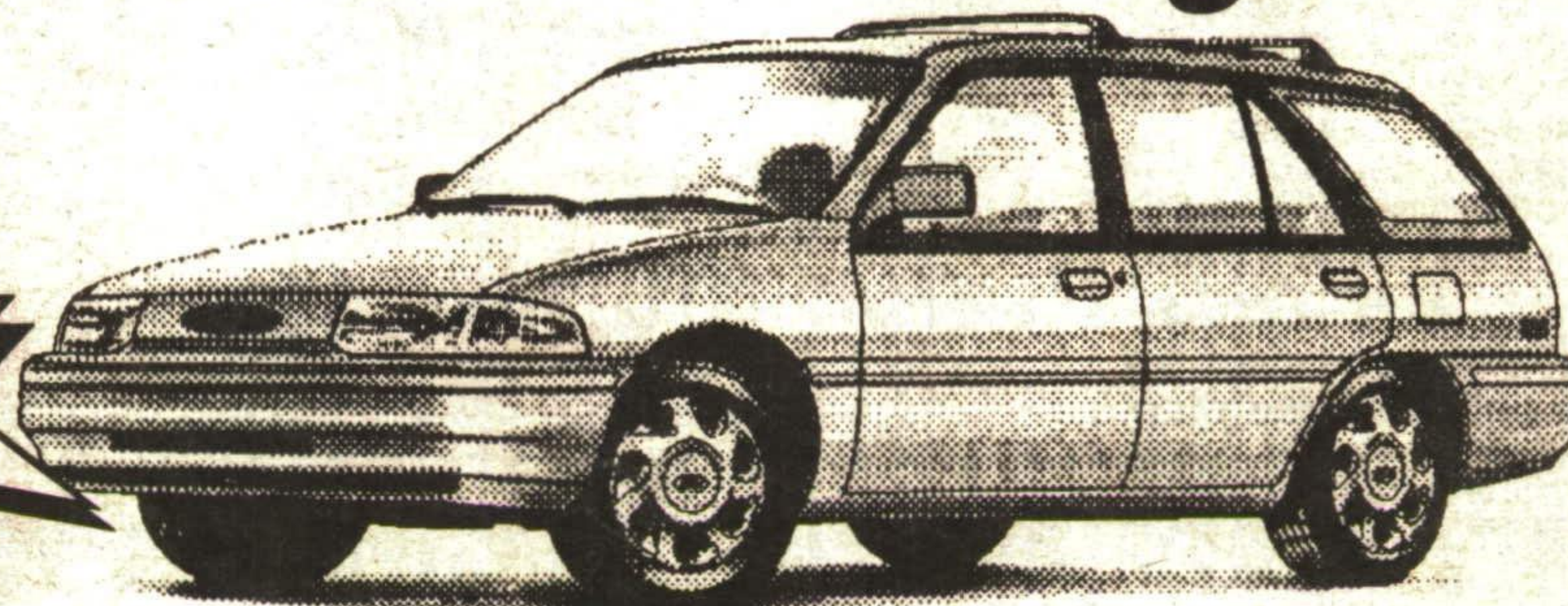
**5 AVAILABLE AT THIS PRICE. 20 IN STOCK TO CHOOSE FROM**

**\$ 15,994\* OR \$ 249\*\* /mo.**

## Brand New 1994 Escort LX Wagon

- 1.9 litre engine with automatic transmission
- air-conditioning
- power steering and brakes
- driver's side air bag
- am/fm cassette
- aluminum wheels
- roof rack

**6 AVAILABLE AT THIS PRICE FOR IMMEDIATE DELIVERY**



**\$ 13,594\* OR \$ 199\*\* /mo.**

**Hurry in to Capital Ford today! At these prices these vehicles will sell fast, so don't be disappointed!**

\*Sale price plus freight (845 Aerosport, 660 Escort) taxes & licence. \*\*Lease based on 24 month Red Carpet Lease with \$2,700 down plus Frt & taxes and 1st and last month's payment in advance. Some mileage restrictions apply. O.A.C.

**FREE LOANER SERVICE CARS**

**CAPITAL FORD SALES**

**FREE LOANER SERVICE CARS**

Hwy. 7 at Delrex Blvd.

GEORGETOWN

873-1626

### GREEN THUMB GARDENING



By CHRISTINE COLE

### COLORFUL CHRYSANTHEMUMS

Garden mums or chrysanthemums have few peers for their late summer and fall flowers. When planted in full sun or partial shade they will bloom for three to five weeks when most other plants have faded due to the effects of frost. Chrysanthemums bloom at this time in response to the shorter day length.

Their flowers span from tiny pompoms to immense balls and their colors range from white, bronze, yellow, purple, peach and orange. The plants vary from eight inches to many feet in height.

Garden mums are perennial, and therefore their foliage dies down to the ground each winter and emerges again the following spring. However, alternate freezing and thawing of the soil. To prevent this, chrysanthemums should be planted in well-drained soil and covered with two to four inches of mulch or straw for the winter. In the fall or spring prune the dead foliage down, close to the soil line.

The color of their flowers, the numerous flower shapes and their ease of cultivation make the chrysanthemum a welcome addition to the garden from late summer into autumn.

Each week Christine Cole of Tuitman's Garden Centre and Landscaping, Highway 25, 1 mile south of Acton, 853-2480, will be presenting helpful tips and information to assist you in creating your garden show-place!

**TUITMAN'S GARDEN CENTRE**

ACTON

853-2480