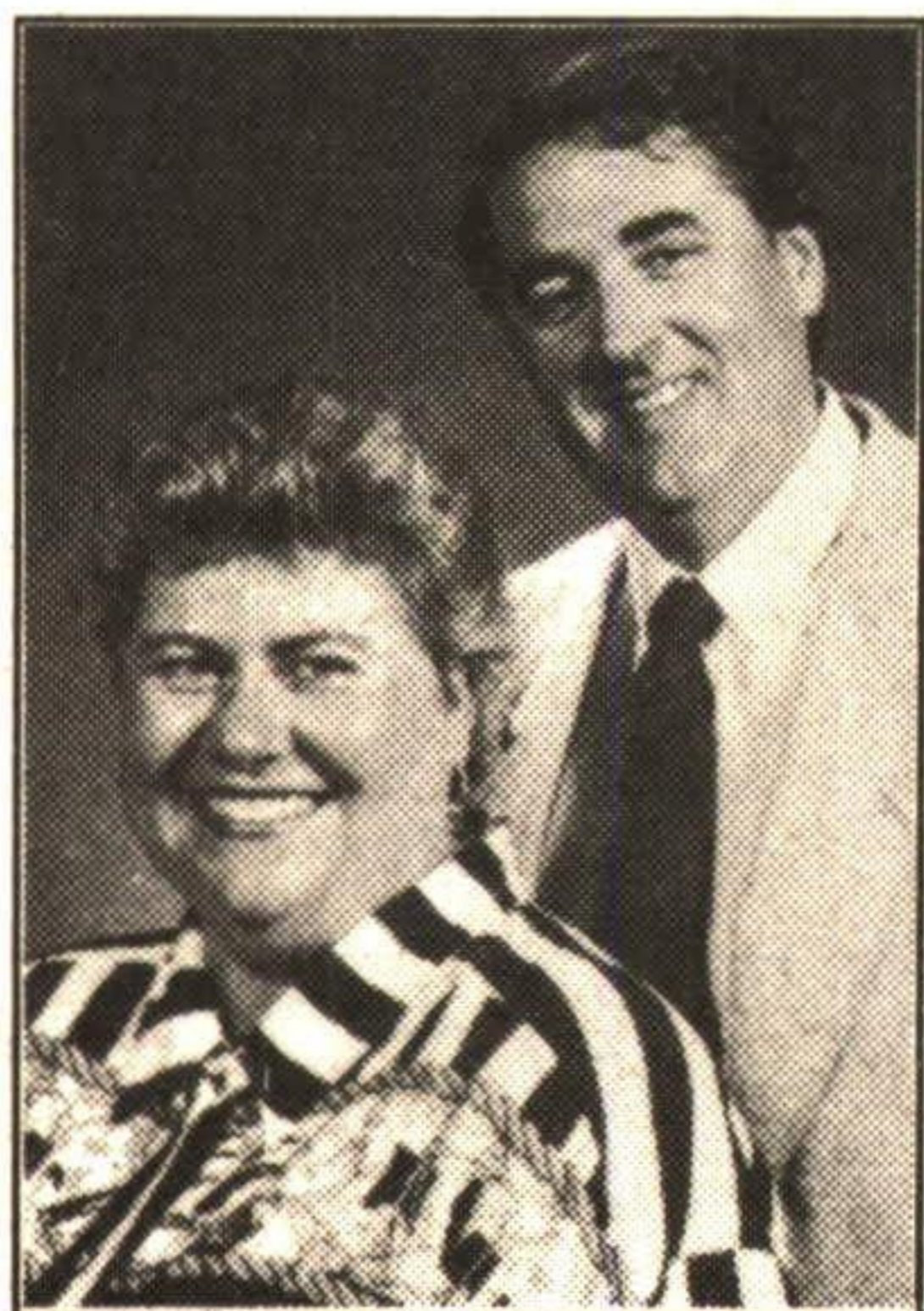


Dream Homes

From Your
Hometown
Real Estate
Professionals



Doug
and
Dianne**
Penrice**

**Associate
Brokers

HOME & COTTAGE



You can have the best of both worlds with this home overlooking Lake Belwood. Large main rooms, located on over 2 acres - potential severance. Call Doug** or Dianne** Penrice.

94-2-400

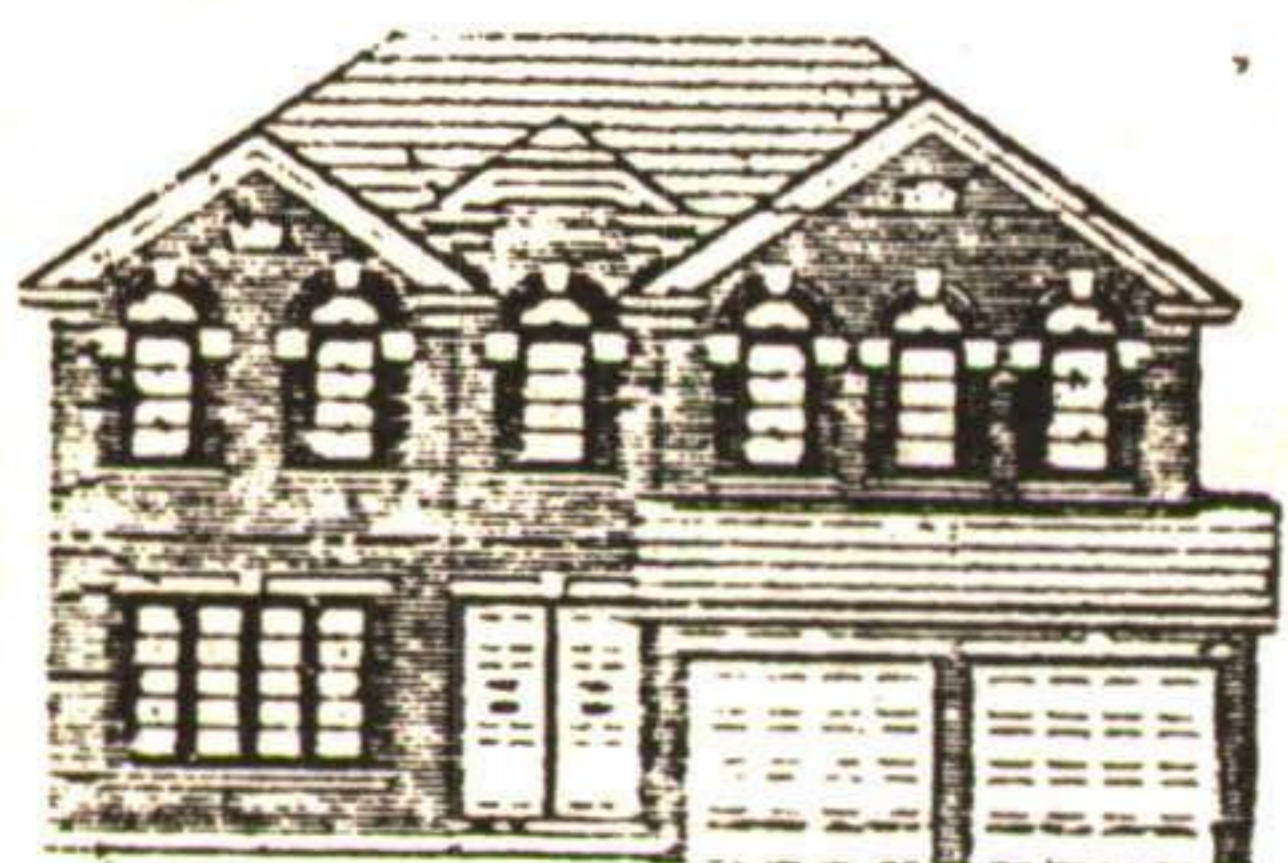
LEISURE LIVING

This one plus bedroom condo will give you just that. A lovely main floor suite. When you go travelling, just lock the door and leave. Asking \$112,000. Call Doug** or Dianne** Penrice.

94-2-465



TO BE BUILT FINAL LOT



Luxurious home on ravine lot - with ceramics, oak stairs, central air - over 3,000 sq. ft. of family living. Purchaser can still select colours. Call Doug** or Dianne** Penrice.

94-2-401

GET SETTLED BEFORE SCHOOL

Attractive four bedroom home, close to schools & shopping. Finished rec room & a very nicely landscaped lot. Don't wait, call on this one today. Call Doug** or Dianne** Penrice.

94-2-481



1ST (FIRST) HOME FEVER...

is what you'll catch when you see this well cared for bungalow. A two bedroom, easily converted back to three, rec room & gazebo in backyard. Asking \$146,000. Call Doug** or Dianne** Penrice.

94-2-450



END THE SPACE RACE

With this large four bedroom semi - you will have lots of room to expand. Newly painted inside, large deck from kitchen. \$162,000. To view call Doug** or Dianne** Penrice.

94-2-419



NEW

VINTAGE HOME

A lovely older home filled with woodwork, birch & oak. Living room with brick fireplace. The sunroom is a lovely spot to sip lemonade on a hot hazy summer day. For a personal appointment call Doug** or Dianne** Penrice.

94-2-486



ARTHUR F.
**JOHNSON &
ASSOCIATES**
LIMITED REALTOR

877-5165

Toronto
874-3040
Res.
873-8469

PROVEN
PERFORMANCE

ARTHUR F.
**JOHNSON &
ASSOCIATES**
LIMITED REALTOR

Martha
Summers*

*Sales Representative

877-5165

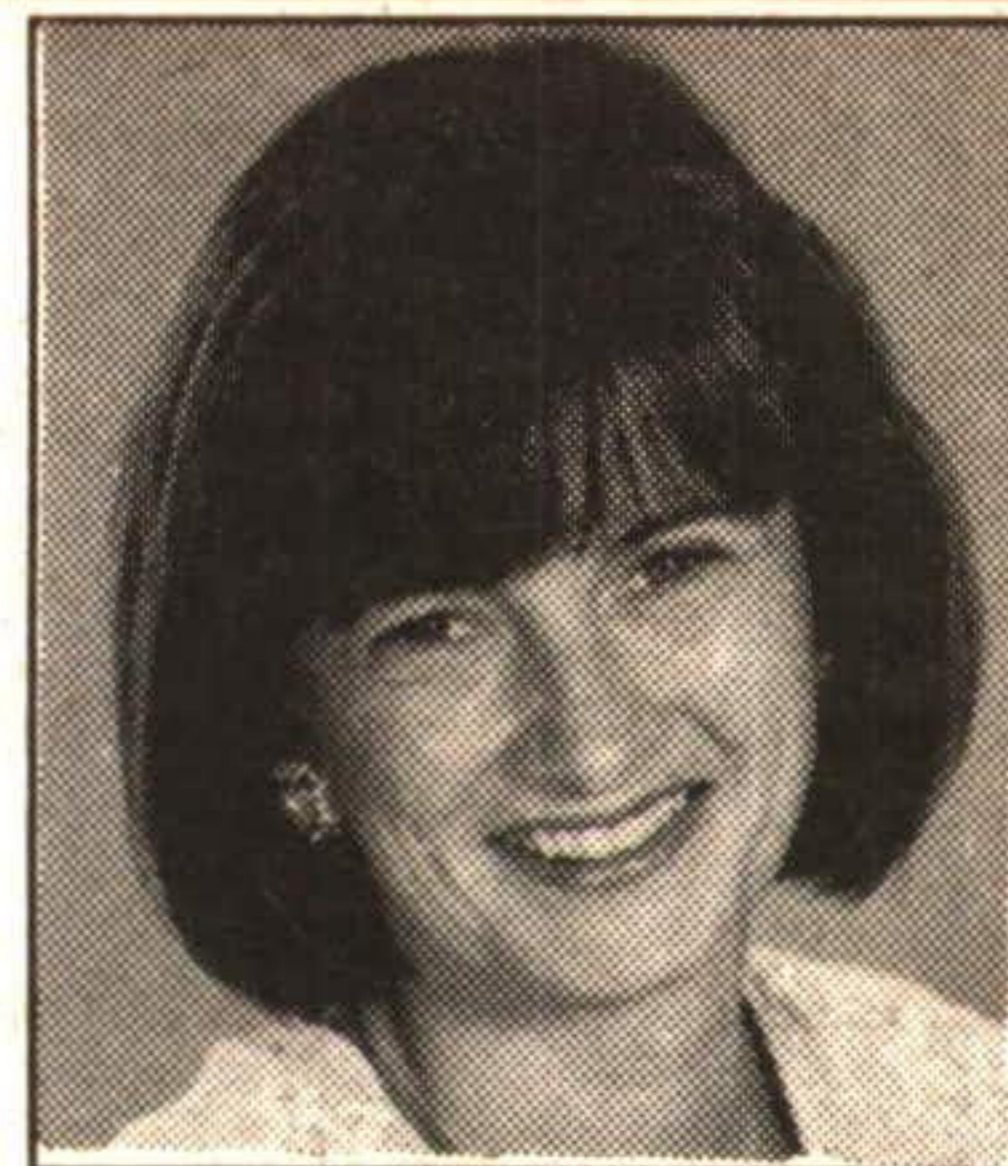
874-3040 (Tor.) (519) 833-9714 (Erin)

247 Guelph St., Georgetown
Consistent Sales Leader for
Town & Country Properties

CALL TORONTO + MISSISSAUGA TOLL FREE* - JUST DIAL 450-8000

COURTESY OF THE SALES PEOPLE AT JOHNSON & ASSOCIATES. *877-, 873-, 702 EXCHANGES ONLY.

President's Circle Award Winner



MARTHA SUMMERS*



BELFOUNTAIN - ULTIMATE COUNTRY LIVING
11 ACRES WITH LOCATION VIEWS AND PRIVACY. CHARMING 3 BDRM VICTORIAN WITH LOVELY PINE AND ORIGINAL WAINSCOTTING. FIREPLACE, SUNROOM, 2 FULL BATHROOMS AND MORE - POOL, TENNIS COURT. GARAGE BARN AND PASTURE - DON'T HESITATE ON THIS ONE.



NEW!



NEW!

ERIN - WALKING DISTANCE TO EVERYTHING
32' x 26' SEPARATE GARAGE, 4 BEDROOMS PLUS OFFICE, LARGE COUNTRY KITCHEN, LOTS OF UPGRADES. DON'T WAIT AT \$165,000.

REDUCED



\$319,000

MINUTES TO 401 & A MOTIVATED VENDOR
HARDWOOD BUSH, STREAM, PADDOCKS, BARN, 10 ACRES
MAIN FLOOR FAMILY ROOM, LARGE KITCHEN, 4 BEDROOMS, FINISHED LOFT



NEW!

PRIVACY IN THE COUNTRY!
2 ACRES. GRACIOUS AND SPACIOUS WITH SUNKEN LIVING ROOM AND FLOOR-TO-CEILING STONE FIREPLACE. GOURMET OAK KITCHEN. PRICED TO SELL TODAY. IMMEDIATE POSSESSION.



\$399,000

CALEDON COUNTRY
MATURE LANDSCAPING, REFORESTED AREA, PASTURE, EVERFLOWING STREAM, 39 ACRES. CHARMING HOME WITH TIN CEILINGS, PINE KITCHEN, SEPARATE 20' x 50' STORE OR OFFICE, LARGE BARN AND WORKSHOP FOR ALL YOUR NEEDS.



\$279,000

GREAT ADDRESS - GREAT PRICE
49 ROLLING ACRES IN CALEDON, 8 ROOM HOUSE, GREENHOUSE, SMALL BARN, TREE HOUSE FOR THE KIDS.



\$495,000

1868 STONE CLASSIC / HALTON HILLS
WARMTH AND AMBIENCE ARE EVIDENT. SITUATED ON 2 LANDSCAPED ACRES WITH UNALTERED CHARM AND TODAY'S CONVENIENCES. 4 BDRMS, 3-1/2 BATHROOMS, BEAMED CATHEDRAL CEILING WITH EXPOSED STONE WALLS IN THE FAMILY ROOM. OVERSIZED 2 CAR, BOARD & BATTEN GARAGE. ALL IN A GREAT LOCATION.



NEW! \$185,000

WAKE UP TO THIS EVERY DAY! FABULOUS VIEWS FROM THIS SUPER 8 ACRE PROPERTY. CLOSE TO CALEDON SKI CLUB, RIDING, GOLF, FISHING AND TENNIS. ROOM FOR A BARN AS WELL - DON'T MISS IT!



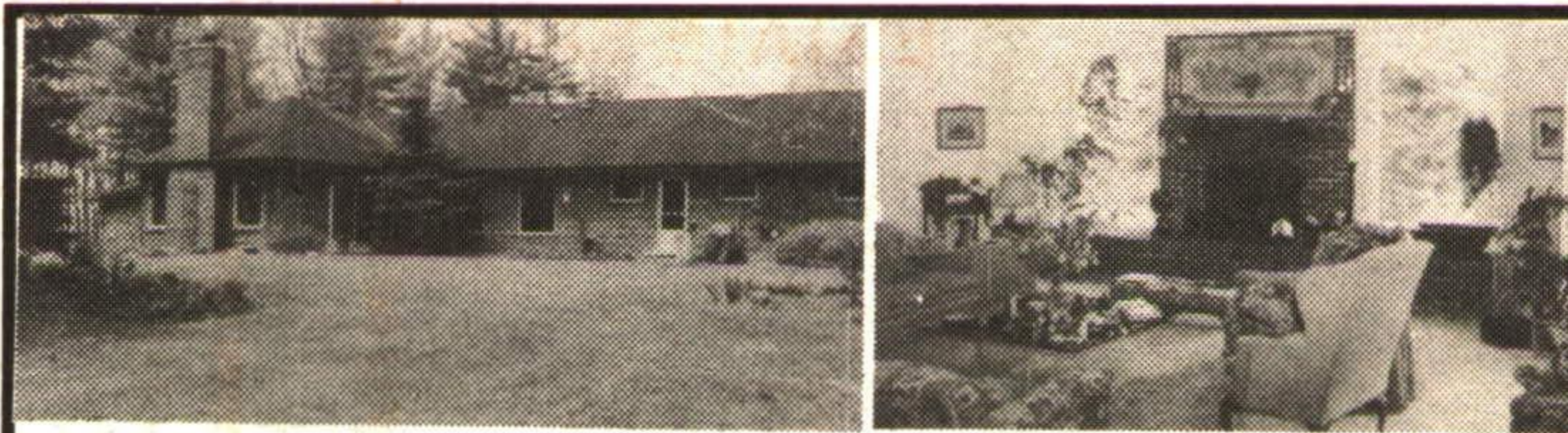
\$265,000

VALUE FOR YOUR DOLLAR!!
VIEWS, PASTURE, FIELD, BARN & GARAGE, 22 ACRES
CHARMING & COMPLETE OPEN CONCEPT LOG HOME, 3+ BEDROOMS



\$349,000

CALEDON NEAR GOLF COURSE
VIEWS, WATER, MEADOW 10 ACRES, 20' BEAMED LIVING ROOM WITH FLOOR TO CEILING FIREPLACE



\$449,000

WOW - IT IS SO DECEIVING!!
THAT IS WHAT EVERYONE SAYS. 4500 SQ. FT. ON 20 PRIVATE ACRES NEAR CHELTENHAM. GREAT LOCATION FOR COMMUTING. 2 FIREPLACES, HARDWOOD FLOORS. KNOTTY PINE COUNTRY KITCHEN WITH ISLAND. FABULOUS DINING ROOM AND A WARM AND INVITING MULTI-SIDED LIVING ROOM WITH FIREPLACE AND VIEWS TO THE GARDEN. OFFERED AT \$449,000.



NEW! \$425,000

START HERE AND NOW \$164,900
SPACIOUS & WELL MAINTAINED ON QUIET CRESCENT WALKING DISTANCE TO EVERYTHING. EAT-IN KITCHEN WITH WALKOUT TO PATIO AREA IN YARD WITH PRIVACY FENCE.



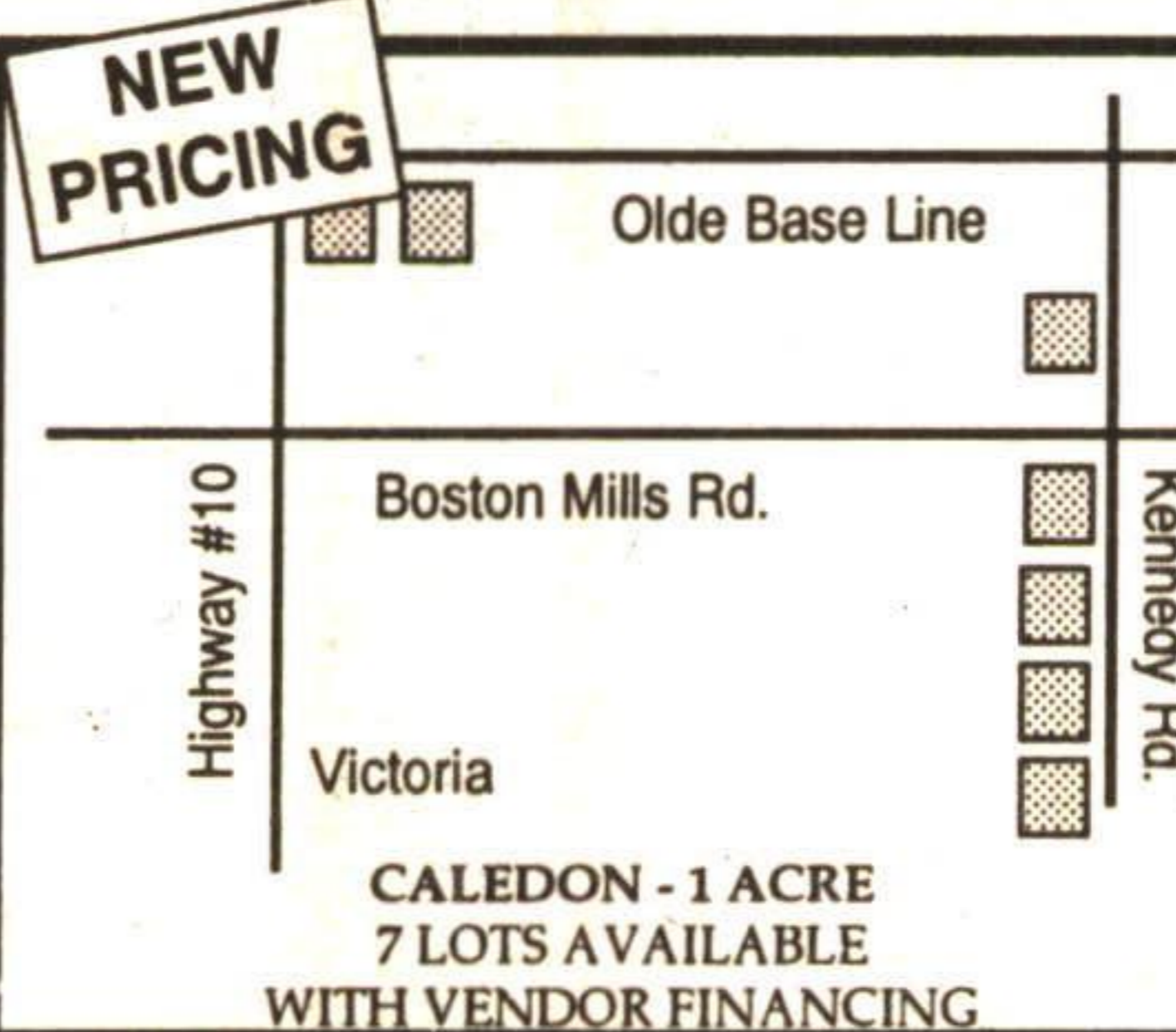
\$379,000

EXCLUSIVE LIFESTYLE IN ROCKWOOD
LARGE KITCHEN, SUNKEN EATING AREA, OFFICE AND SEPARATE BASEMENT ENTRANCE



\$394,000

NEAR BALLINAFAD
INDOOR POOL, BARN, POND, 6 ACRES, FIREPLACE IN MASTER BEDROOM



NEW PRICING

CALEDON - 1 ACRE
7 LOTS AVAILABLE
WITH VENDOR FINANCING



NEW!

7 ACRES OVERLOOKING
DEVIL'S PULPIT GOLF COURSE - CALEDON
PRIVACY, MATURITY AND LOCATION
\$137,000



\$249,000

VIEWS IN ERIN LOCATION
LARGE LOT ONLY \$114,000 OR
BUILD TO SUIT \$249,000