

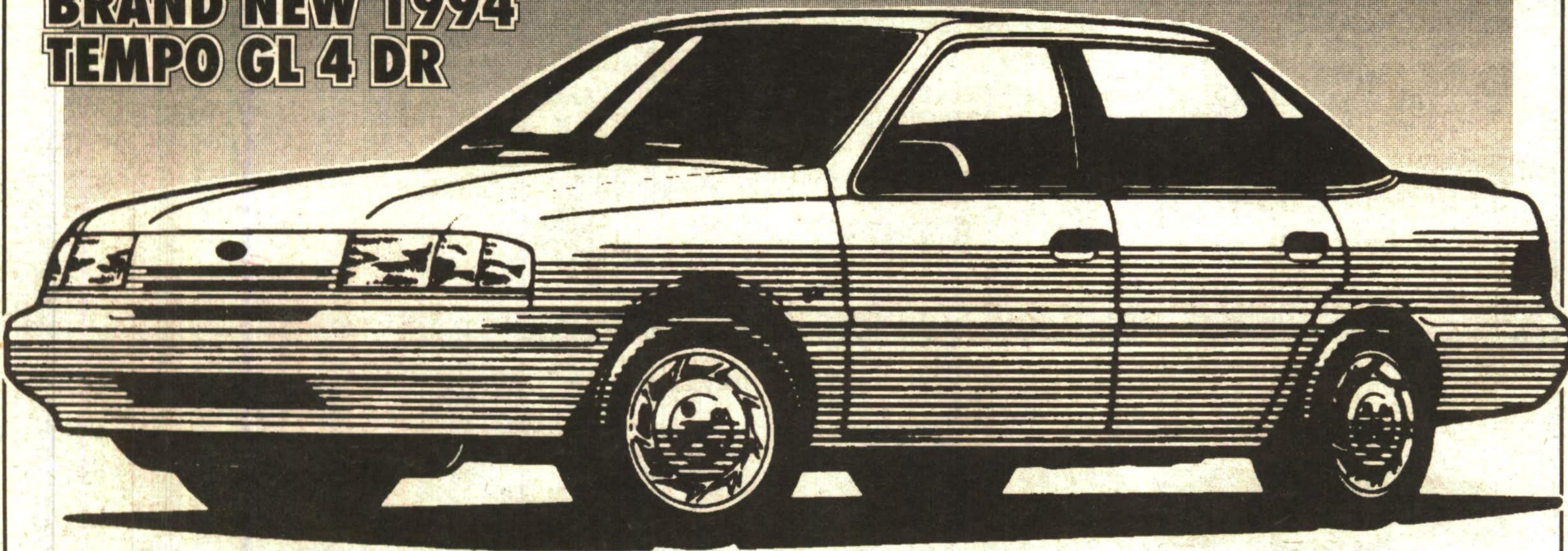
TODAY AT CAPITAL FORD

*Come Home*

**TO REAL VALUE!**

**WHERE CUSTOMER SERVICE & SATISFACTION IS OUR PRIORITY**

**BRAND NEW 1994 TEMPO GL 4 DR**



GREAT FAMILY VEHICLE : • AUTOMATIC TRANSMISSION • 2.3 LITRE EFI ENGINE • POWER BRAKE • POWER STEERING • AIR CONDITIONING • INTERVAL WIPERS • ALUMINUM WHEELS • REAR DEFROSTER • SPORT PACKAGE • AM/FM STEREO • LUGGAGE RACK • TWO TONE PAINT • AND MORE

VALUE PRICED AT

**\$10,995**

OR

**1.9% BANK FINANCING**  
NO LIMIT UP TO 48 MONTHS


**1994 TAURUS GL WAGON**



EQUIPPED WITH : AUTOMATIC TRANSMISSION, 6 CYL EFI ENGINE, AIR CONDITIONING, POWER STEERING & BRAKES, REAR WIPER WASHER, AM/FM STEREO CASSETTE, FLOOR MATS, REAR DEFROSTER, SPEED CONTROL, DUAL AIR BAGS AND MORE  
YOUR CHOICE WAGON OR SEDAN

**\$17,995**


**1994 AEROSPORT WAGON**



EQUIPPED WITH : AUTOMATIC TRANSMISSION, 3.0 L ENGINE, AIR CONDITIONING, REAR ANTI-LOCK BRAKES, CAPTAINS CHAIRS, AM/FM STEREO, REAR WINDOW DEFROST, POWER STEERING & BRAKES, SPORT APPEARANCE PKGE, RUNNING BOARDS, TWO-TONE PAINT, ALUMINUM WHEELS

**\$16,994**

**1994 ESCORT HATCHBACK SEDAN OR WAGON**



EQUIPPED WITH : REAR DECK LID SPOILER, CAST ALUMINUM WHEELS, LEATHER WRAPPED STEERING WHEEL AND A WHOLE LOT MORE!

**\$12,995**

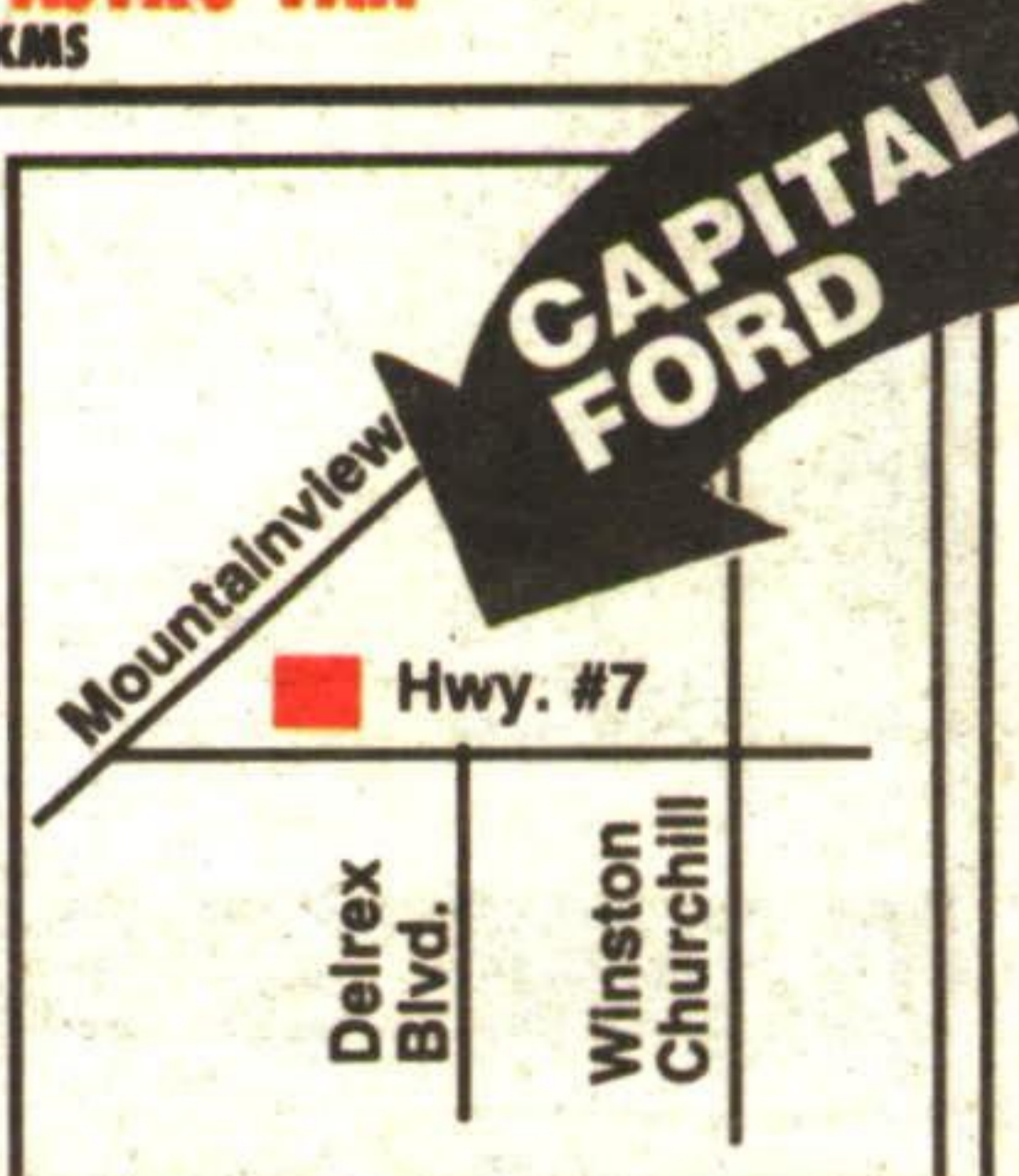
**VALUE PRICED USED CARS**  
FULLY RECONDITIONED

'92 MUSTANG LX 5.0 L ENGINE ONLY 40,000 KMS	<b>\$11,900</b>
'92 PROBE LX 2DR EXCELLENT COND. ONLY 49,000 KMS	<b>\$12,800</b>
'91 TAURUS GL WAGON HURRY IN FOR THIS 1 ONLY 65,000 KMS	<b>\$13,200</b>
'91 PONTIAC SUNBIRD A REAL GEM ONLY 59,000 KMS	<b>\$9,800</b>
'93 CHEVY ASTRO VAN ONLY 18,000 KMS	<b>\$17,495</b>

The Fine print: Price shown for 1994 Tempo reflects rebate assigned to dealer. 1.9% Bank Financing is available for up to 48 months unlimited amount O.A.C. 1.9% may not be combined with rebate offer.  
All new car prices shown are subject to freight, applicable taxes and licence.  
Tempo - \$620, Taurus - \$785, Aerostar - \$895, Escort - \$660. See dealer for details.

**#1**  
IN  
CUSTOMER  
SATISFACTION

**CAPITAL FORD SALES**



**HWY. 7 GEORGETOWN 873-1626**

**GREEN THUMB GARDENING**



By CHRISTINE COLE

**More Herbs Than You May Realize**

We are all familiar with the more common herbs such as Basil, Marjoram, Oregano and Parsley. But, did you know that Silvermound Artemesia, Purple Cone Flower and Bee Balm are also herbs.

Silvermound is a popular landscaping perennial that forms silver, lacy mounds. It also has taller, less-formal relatives that are also considered herbs. Most are too toxic for culinary use. Their major use is in crafts and landscapes.

Bee Balm or Monarda is also better known as a landscaping herb. Its rooster comb-like flowers atop 2-1/2-3 ft. plants are extremely showy. It is one of the few herbs that performs very well in semi-shade. Hummingbirds and Tea drinkers both enjoy this plant. The distinctive flavor of Earl Grey Tea comes from Monarda.

Sweet Woodruff is also an herb. But it is probably better known as a ground-cover in a woodland setting. This plant is the most shade tolerant of all herbs. It is easy to identify by its whorled leaves that are arranged like the spokes of a wheel. At this time of year it forms a carpet of white blooms. Sweet Woodruff is only faintly fragrant when fresh but attains its full aroma when dried. It is also useful to "fix" aromas in potpourri, similar to orris root.

To learn more about the culture, and uses of Herbs, plan to attend our Annual Herb Fair June 25th, 1994 from 1:00 p.m. to 4:00 p.m.

Each week Christine Cole of Tuitman's Garden Centre and Landscaping, Highway 25, 1 mile south of Acton, 853-2480, will be presenting helpful tips and information to assist you in creating your garden show-place!

**TUITMAN'S GARDEN CENTRE**  
ACTON  
**853-2480**