

Please note: we cannot take community notices over the phone. We accept only faxed or written notices. We cannot guarantee that a notice will get in the newspaper. Please keep notices brief — we reserve the right to edit the notice for space. All notices, must be accompanied by name and telephone number.

**Market stall available**

The Georgetown Farmers Market has a stall available for non-profit organizations. If interested, contact 873-8663.

**Family Council meeting**

The next Allendale Family Council meeting will be held June 13 at 7:30 p.m. in the auditorium at 185 Ontario St. S., Milton. Guest speaker will be Anne Marie Radcliffe of the office of the Attorney General, will speak on

Power of Attorney and Substitute Decisionmaking.

**NHADH meets**

The Board of Directors of the North Halton Association for the Developmentally Handicapped invites you to the annual General Meeting June 14, 7:30 p.m. Milton District High School Cafeteria, Milton. Agenda includes: speaker on Workshop Reform, business meeting, special presentations, election of Board of Directors. Refreshments will be served. Everyone welcome! Update your membership in order to vote. For info call Etta Mills at 873-8181.

**Celiacs meet**

Canadian Celiac Association Halton-Peel Satellite meeting will be held June 14, 7:30 p.m. in auditorium of Credit Valley Hospital. Speaker: Dr. Hollingworth. For info call 416-781-9140.

*Community*

**CALENDAR**

**M.E. Support Group**

New myalgic encephalomyelitis-chronic fatigue syndrome support group forming in Georgetown. A June 15th meeting at 7 p.m. will feature Miriam Gallacher at the Georgetown Hospital. If you are a sufferer, caregiver or simply seeking information about this illness - call 702-0074 (local Georgetown number).

**United Way meeting**

The United Way of Halton Hills

will be holding its Annual General Meeting at the United Way office, 11622 Trafalgar Road, Georgetown on Wednesday, June 15 at 7 p.m. Refreshments will be served. All are welcome. For more information, contact the United Way office at 877-3066.

**Seniors Drop-in**

All seniors try your skills at a variety of games and skills at St. Alban's Anglican Church, 537 Main St. Glen Williams, 12 to 3 p.m.

**Limehouse euchre**

All welcome to euchre at Limehouse Community Hall (lunch served) on June 16, 30, July 14, 28.

**Drying flowers**

Drying and arranging flowers will be featured at the June 16th meeting of Christian Women's Club. Babysitting available. Meeting held at 9:30 a.m. in Centennial Rec. Centre, 80 Mary St.

Brampton. Call 451-6986.

**Strawberry Fair**

The Milton District Hospital Auxiliary is holding its annual Strawberry Fair on Saturday, June 18, 10 a.m. to 3 p.m.

**Allendale barbecue**

3rd Annual Allendale Auxiliary Chicken Barbecue will be held June 18. Tickets available at the Allendale Tuck Shop or call 878-4141 or 878-6607. Proceeds to the Allendale Fundraising Campaign.

**Nine Months!**

Arts Alive presents Nine Months, a one-woman musical comedy about pregnancy and motherhood for one performance only, on June 22, 8 p.m. at the John Elliott Theatre. Tickets are \$10 and available at the Georgetown Library or at Royal LePage Real Estate Ltd. on Guelph Street. Phone 873-0755 for information.

*June 19*

**Classics for Cancer is great outing for dad**

Father's Day usually results in yet another tie, shirt or pair of argyle socks for dear old Dad. This year, why not treat Dad to something unique that he can share with the whole family?

Take him to one of Canada's largest outdoor auto shows, the 7th Annual Classics Against Cancer Auto Show at Cedarvale Park in Georgetown on Sunday, June 19.

Whether you are a vintage car of muscle car enthusiast, the Classics Against Cancer Auto Show is sure to please. Visitors will see more than 300 rare and beautiful cars which will be on display from 11 a.m. until 4 p.m.

For just \$5 per adult, you can enjoy the cars and live entertainment, headlined by Men Without Hairs, one of Canada's top musical comedy team.

The children's corner allows little ones to have their faces painted, laugh with colorful clowns and enjoy their own entertainment for

free. Delicious food and refreshments will be available for the whole family.

This event is organized by a committee of volunteers who ensure that all of the profits raised go directly to the Canadian Cancer Society. Last year's show, although dampened by rain, raised over \$10,000 for a total of \$76,000 since the first event in 1988.

Local businesses can give their

support to the event by making cash contributions or donating merchandise or services. National companies like Valvoline Canada Ltd., UAP/NAPA Auto Parts, Allied Signal Automotive and 1050 CHUM have already donated to this year's event.

So bring the whole family and celebrate Father's Day while doing a good deed, raising funds for the Canadian Cancer Society.

**FRENCHIES' FRIES**

Located at

**THE CARPET BARN**

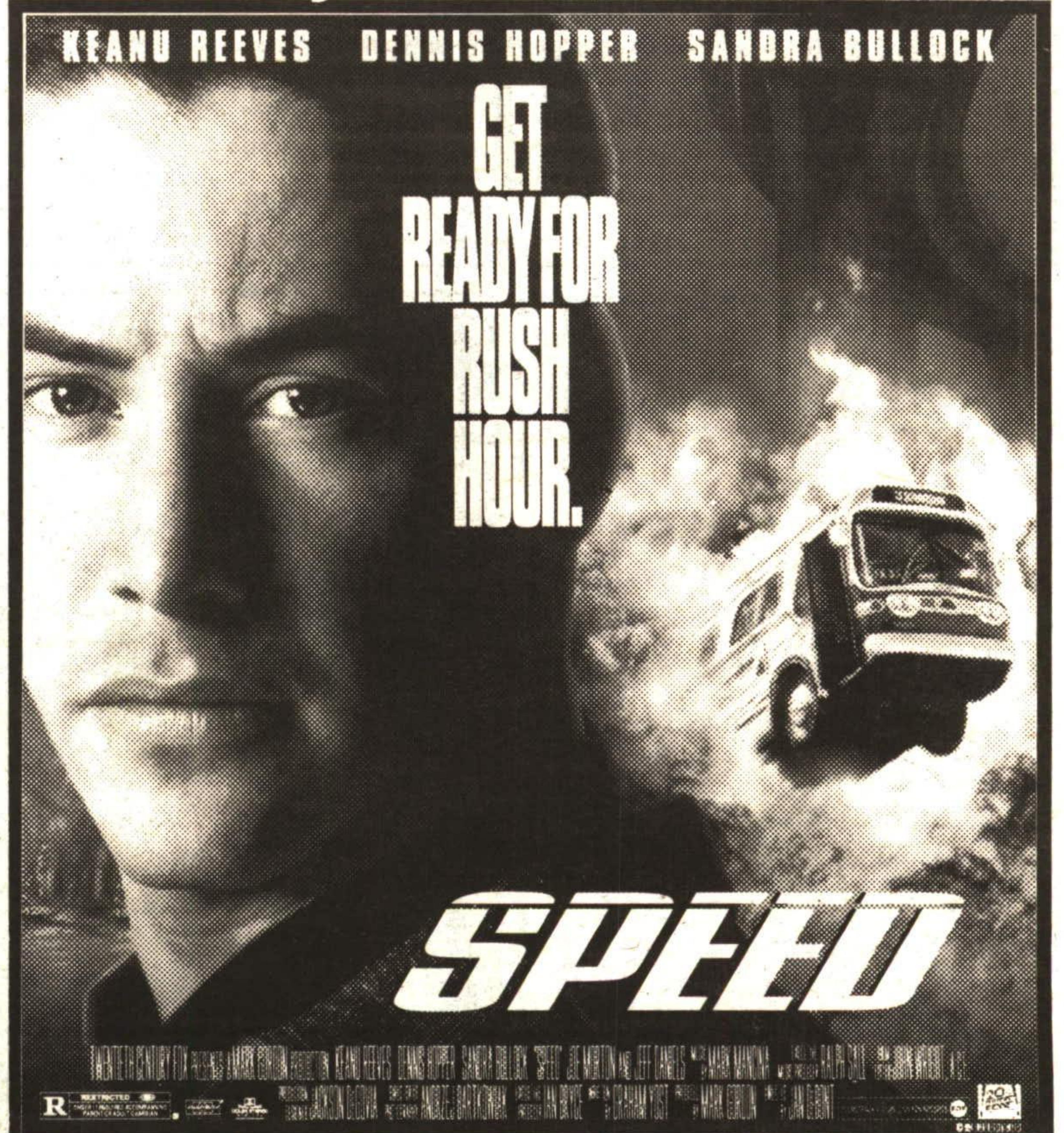
26 Guelph St., Georgetown

**NEW HOURS OF OPERATION**

Weekdays 10:30 a.m. - 7:00 p.m.

Weekends 10:30 a.m. - 8:00 p.m.

**DON'T BE CONFUSED  
THERE IS ONLY ONE  
FRENCHIES' FRIES**



**GEORGETOWN CINEMAS**  
CINEMA #2 EVENINGS 7 & 9:20 p.m.  
VIOLENCE, FRIGHTENING SCENES, NOT RECOMMENDED FOR CHILDREN  
235 GUELPH STREET, GEORGETOWN 873-1999

**GEORGETOWN CINEMAS**  
235 GUELPH STREET - 873-1999

**PRICES**  
\$4.25 TUESDAYS  
GIFT CERTIFICATES AVAILABLE  
ADULTS \$7.00  
CHILD/SENIOR \$4.25  
ALL MATINEES \$4.25

1 **THE FIRST STONES**  
Nightly 7:00 & 9:00 p.m. PG  
Sat/Sun Matinee 2:00 p.m.

2 **SPEED**  
Evenings 7:00 & 9:20 p.m. AA  
Violence, Frightening Scenes  
Not recommended for children.

3 **Thumbelina**  
Sat. & Sun. Matinee 2:00 p.m. FAM

3 **THE COWBOY WAY**  
Evenings 7:00 p.m.  
Sat/Sun Matinee 2:00 p.m.

3 **BEVERLY HILLS Cop III**  
Evenings 9:00 p.m. R

*Turf Tips*



Duncan Atkinson  
Eileen Atkinson

**TURFGRASS SCALE**

I have found a very unusual insect in lawns this year called "Turfgrass Scale". I believe the occurrence of scale has been more evident because of the wet weather this spring. The scale is most often found in sodded lawns more than 3 years old. Scale live and feed in the thatch layer of your lawn.

Scale is a very tiny insect (similar to a spider mite), which first starts with a small orange colour egg which over winters in the thatch layer. This egg hatches in early spring and a large number of the nymphs appear and begin sucking the juices from the grass. The damage frequently resembles drought symptoms. Generally the damage is just cosmetic, and a healthy lawn usually recovers on its own. Your best defense against a scale problem is a healthy thick green lawn.

Keep your lawn fertilized, watered and mowed properly, and even though this won't completely eliminate the scale problem, it will give your lawn the best chance possible to recover.



NEXT WEEK:  
"HAVING A NICE LAWN IN THE COUNTRY"

**Weed Man®**

WE CARE FOR YOUR LAWN

This is a weekly lawn care column.  
For additional information contact Duncan or Eileen

**873-2062**

72 Mill Street #8  
Georgetown, Ontario



**WINNER •**

**ANNIE VANMEIJEL  
Holy Cross School**

The above winner receives 4 Orders of Party Pizza, 36 Cans of Coca Cola for the class

Come in our restaurant and ask how you can become a classroom hero. More winners every week until June '94.

**873-7241**