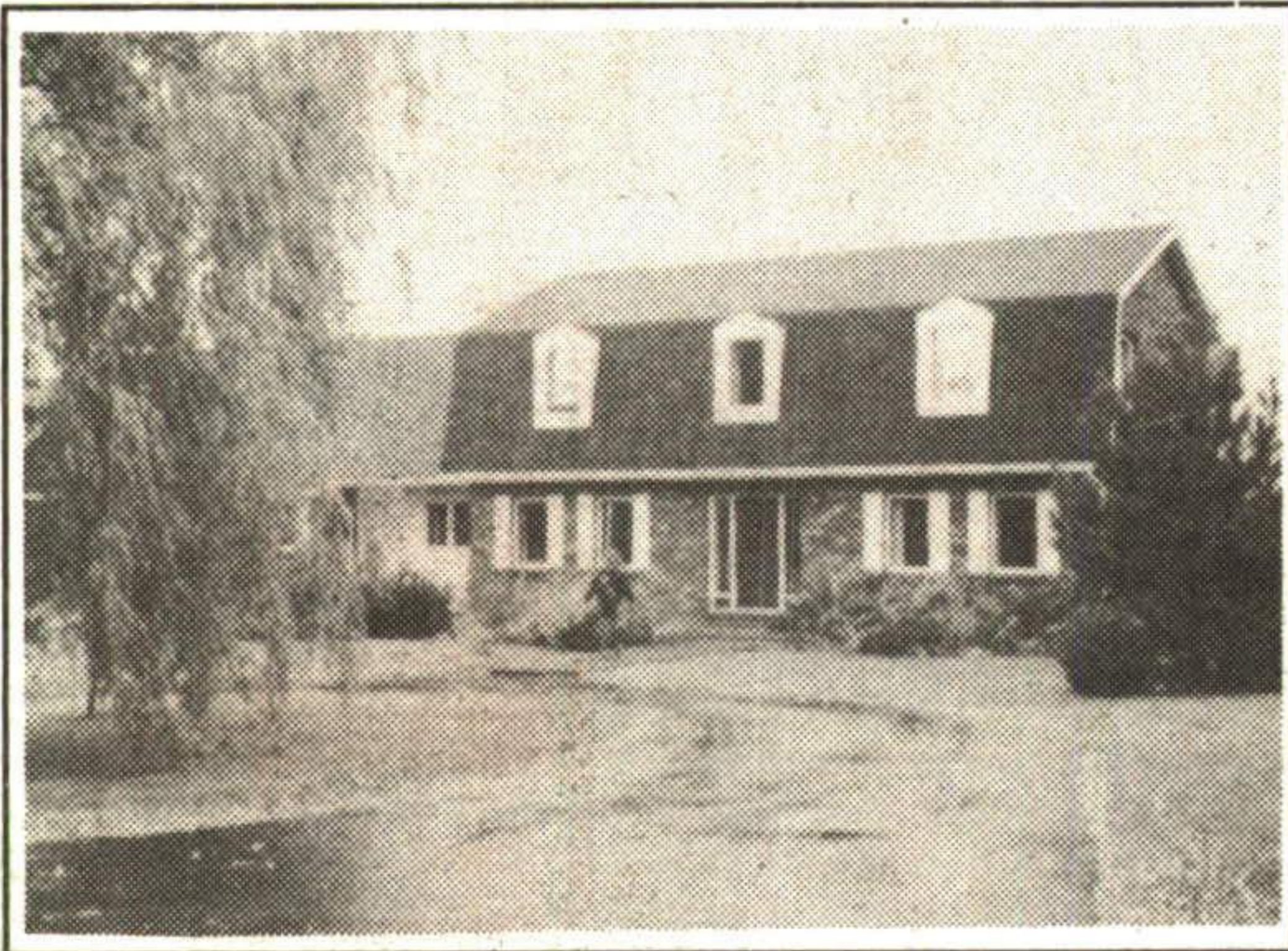




**JOHNSTON & DANIEL**  
The Right Connection



**LET NATURE SURROUND YOU**

Excellent location, 23 acre hobby farm with a 5 bedroom home designed for comfortable family living, with wonderful views, close to the Bruce Trail and only minutes to Georgetown. Cathy Buckrell (905) 838-3830.

JD93-14

14396 CREDITVIEW ROAD, CHELTENHAM, ONTARIO L0P 1C0 TELEPHONE (905) 838-3830 (CALEDON) (905) 874-3086 (TORONTO LINE)

**FEATHER YOUR NEST**

\$98,900. For the independent career person "just right sized" 2 bedroom townhouse including appliances and parking. Call now Betty McKend\*. 32-42



**\$223,900 NEW LISTING**

Lovely 4 bedroom family home in Rockwood. Some hardwood floors, formal living room and dining room with fireplace. Many bells & whistles to cheer about. See it before it's too late! Call Betty McKend\*. 32-43

**ROYAL LEPAGE**

Royal LePage Real Estate Services Ltd., Broker  
170 Guelph St., Georgetown

**Betty McKend**  
Sales Rep.\*  
**877-0173**  
Tor. 874-3068



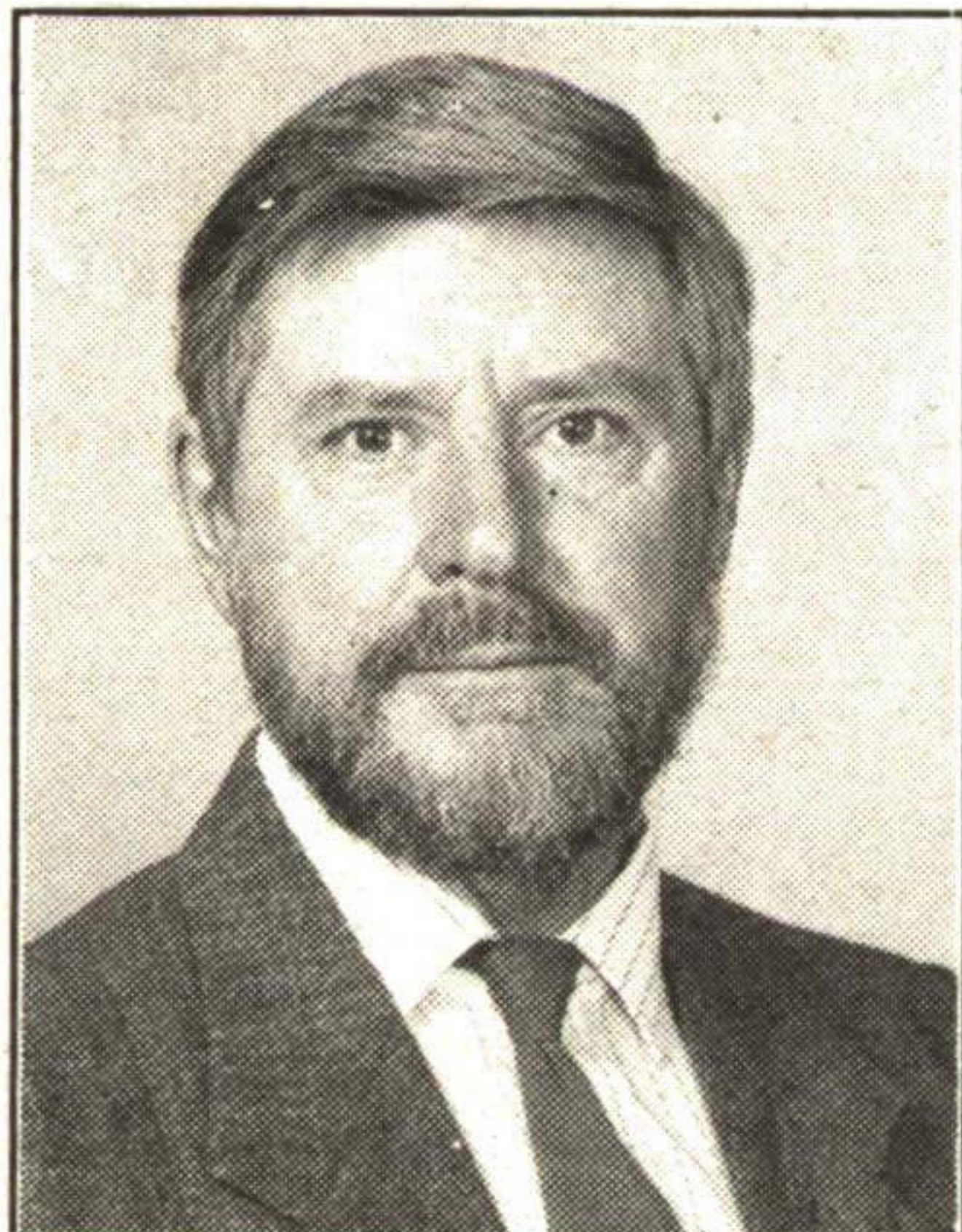
**ANOTHER ROYAL LEPAGE ADVANTAGE**

**ROYAL LEPAGE**

**MARCH SALES LEADERS**



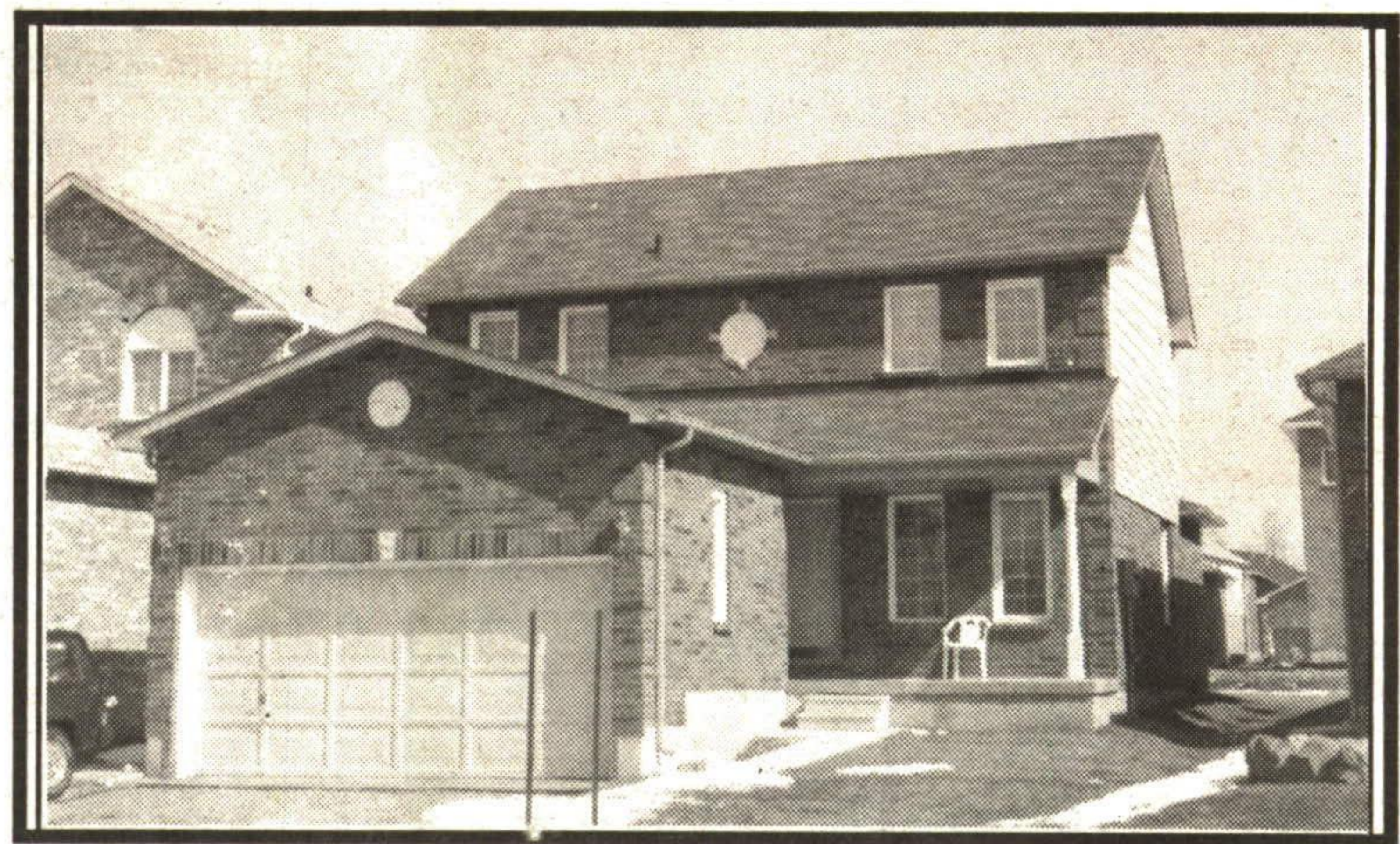
**#1 MARY MAAN**



**#2 RICHARD JUDD**

**Royal LePage Real Estate Services Ltd., Broker**  
Georgetown Town & Country Office  
170 Guelph Street  
**877-0173**

**Quiet Young Neighbourhood**



Delightfully bright 3 bedroom home, eat-in kitchen with oak cupboards. Main floor family room. Spacious principal rooms. Two bedrooms have walk-in closets. Neutral decor. Almost new and ready to move-in. \$189,900. Requests immediate action.

RM94-096

**TO VIEW CALL LORRAINE HURLEY\***

**877-5211**



**Lorraine Hurley**  
Sales Representative\*  
(905) 877-5211



Suburban (91) Inc., Realtor  
360 Guelph Street, Georgetown



**Countrywide**

All-Pro Realty Inc.

Presidents Club

MASTER SALES



**Maureen Plucinsky B.Sc.**

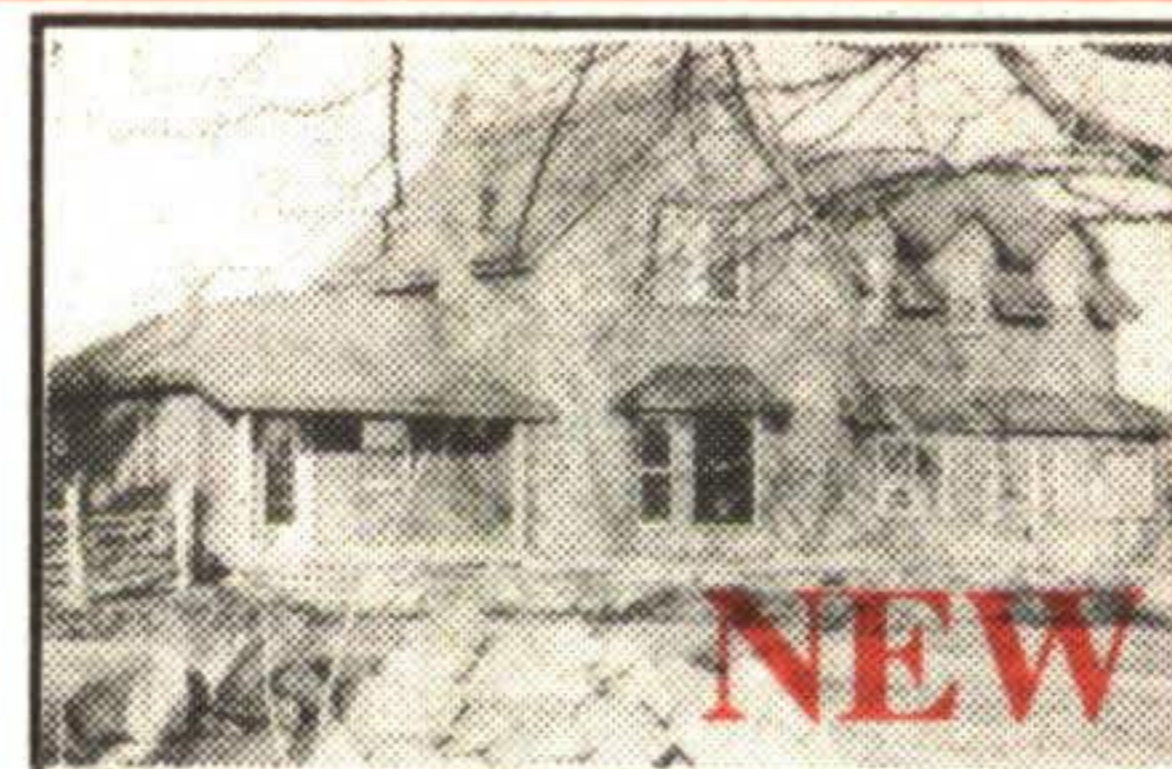
Sales Representative

**873-3377**

Tor.: (905) 874-3057

**FREE EVALUATION**

**\$369,900**  
Century Home  
~ 4 Acres



Terra Cotta.. 5 stall barn. 3 paddocks. 45min. to Toronto. Main floor in-law suite. CW94-025

**\$319,000**  
Cape Cod  
1 Acre



MF in-law suite. Inground pool sep. fenced. Mature trees. 10 min to GO. CW94-021

**LOCATION 1+Acre UNIQUE**



Near Georgetown. 5 bdrm. 3 WR. Fenced, i/g pool. Pond and stream. Park-like. CW93-126

**\$379,000**  
Timber-Frame  
7.45 Ac.



Approx. 4,000 sq ft. Open concept. Soap-stone fireplace. Treed & private. CW93-089

**\$219,000**  
0.3 Acre  
+ In-Law



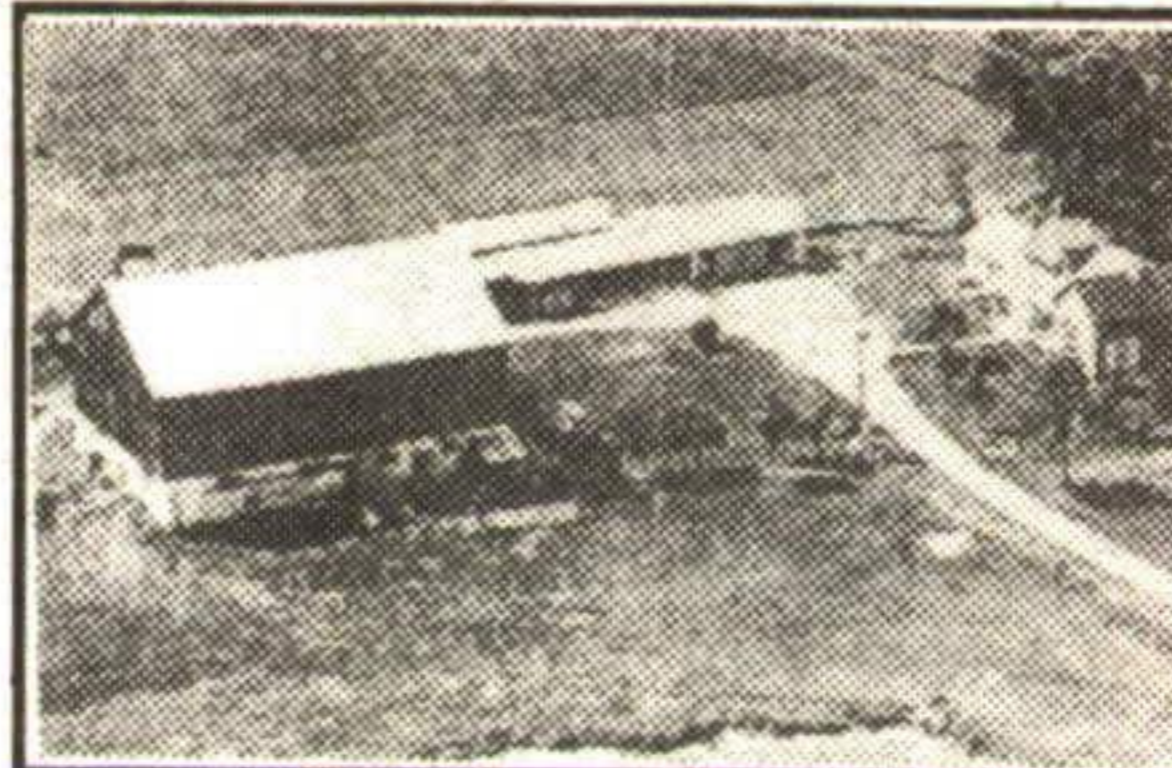
Glen Williams. Close to GO, parks, river, Church & store. Walkout bsmt. CW94-017

**\$179,900**  
Family Size



Quiet crescent. Walk to GO. Many upgrades. CAC. Finished walkout basement. CW94-022

**\$439,900**  
Farm  
58 Acres



Halton Hills. Cleared/treed. Pond. Barn. Near Blue Springs Golf Course. CW92-139

**\$439,900**  
Farm  
44 Acres



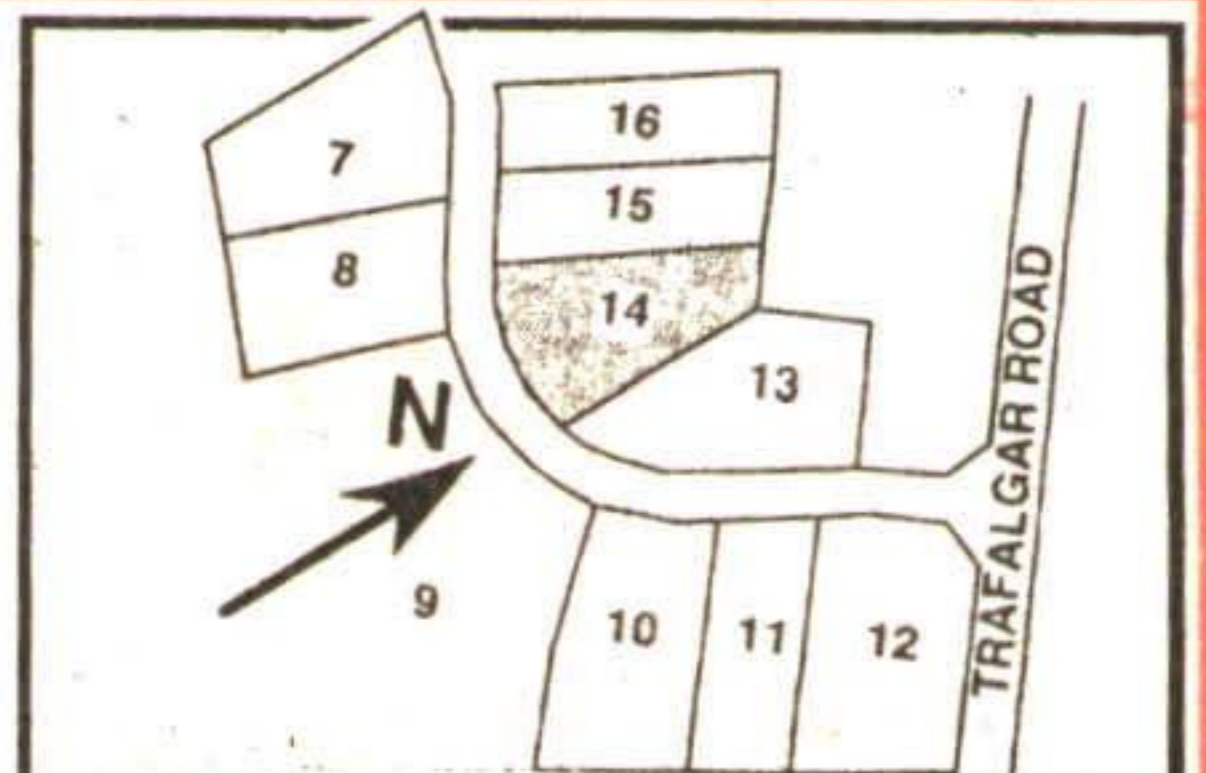
Milton. W/o bsmt. 25 Ac. bush. 16mi. Creek. Barn & driveshed. 12min to 401. CW93-238

**\$114,900**  
2 Acres  
Lot



Milton. Treed & sloping. Underground hydro & well. Suitable for w/o bsmt. CW94-029

**\$94,900**  
1.3 Acre  
Lot



Ballinafad. Cleared/treed/sloping. Suitable for w/o bsmt. Well & Hydro. L14 CW92-153