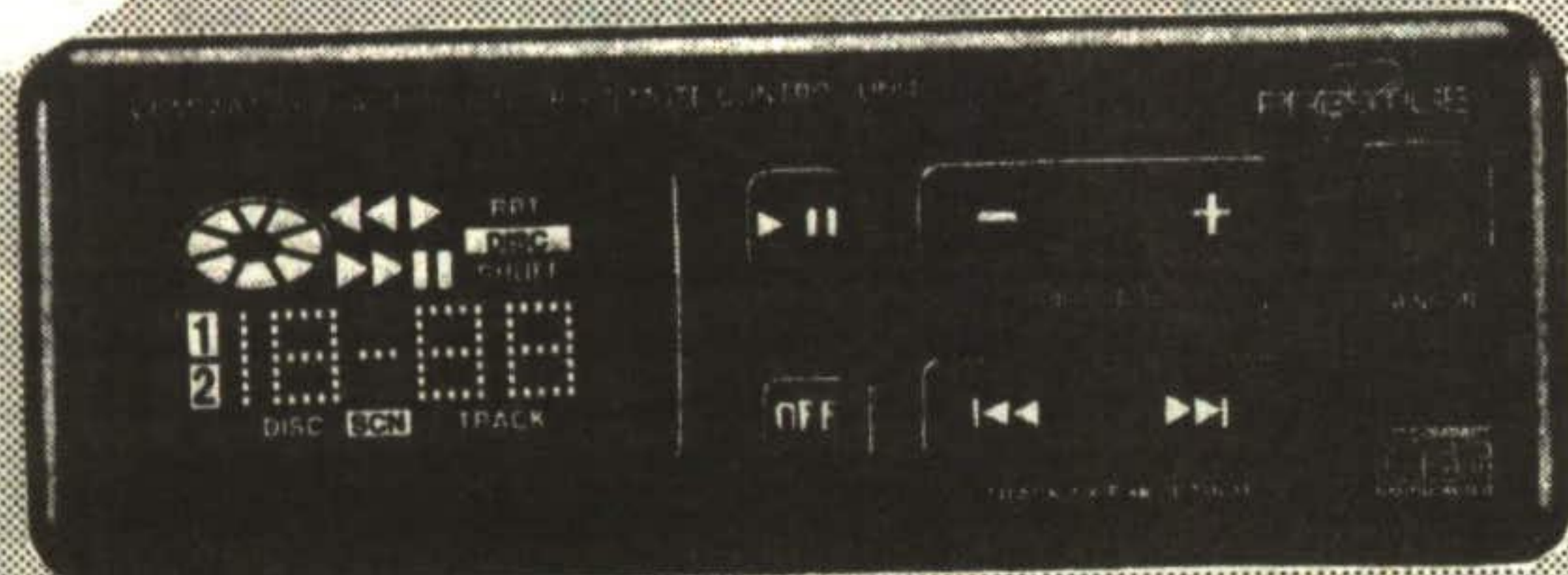


# ADD A CD CHANGER TO YOUR EXISTING CAR STEREO\*

\*(ADAPTS TO ANY CAR STEREO INCLUDING FACTORY SYSTEMS)



AVAILABLE IN 10 AND 6 DISC MODELS

**REMOTE CONTROL 10 DISC CD CHANGER**  
**Features** □ Remote-mount changer holds up to 10 compact discs □ Dash-mounted control unit with backlit LCD displays disc, track and function □ Forward and reverse track and disc SEARCH □ High-speed audible CUE and REVIEW search □ Plays through existing car stereo system using FM interface (included) □ 8X oversampling digital filter □ Twin 1-bit digital/analog converters □ Anti-shock CD mechanism □ Designed for horizontal or vertical mounting □ Operates with wireless remote control (optional model P-12R) □ 16 or 20 disc capability with second changer (optional)

**\$499<sup>95</sup>**  
**installed**

**GEORGETOWN CUSTOM CAR SOUND**

**55 SINCLAIR AVE. 877-2425**

**•SALES •SERVICE •INSTALLATION**  
 SERVING HALTON HILLS AREA SINCE 1978

# Winter can take its toll

The Hamilton Auto Club wants to make sure that all motorists have their car checked over following the brutal winter and are offering suggestions that will help reduce future repairs.

This winter's extreme weather condition creates additional abuse on vehicles: potholes, cold temperatures and road salt can all be extremely damaging.

With the help of a qualified technician, following the Hamilton Auto Club suggestions will help all vehicles run smoothly into summer.

Check suspension system - for damage to springs and shocks.

Steering components - check to ensure that there are no bent linkages as a result of rough rides over potholes and broken pavement.

Wheel Rims - have them thoroughly checked for dents and cracks.

Tire condition - have tires examined for

excessive wear and cuts; it's a good idea to have your spare examined as well.

Clean the exterior of your car - thoroughly clean the outside of your vehicle to remove corrosive road salt which builds up on your car. Special attention should be paid to the underside of your vehicle including the wheel wells.

**Engine Shampoo** - removes the road salt which builds up in the engine compartment.

Have a complete once over - have a technician check the condition of your brakes, muffler system and exterior lights for winter damage.

Clean the interior of your car - dirt, mud and road

salt tracked into your vehicle can also be damaging. Clean your floor mats, rugs and seats thoroughly.

Change your oil - a complete oil and lubrication job should be done regularly to your manufacturer's specification.



# Protect your investment

Each year an increasing amount of cars are stolen and the Hamilton Auto Club has some suggestions for a car owner that may protect their investment.

The first step is common sense; do not leave your car unlocked. A surprising number of thefts occur when the owner carelessly leaves their keys in the ignition.

At night, park in well lit areas and keep valuables out of sight. Apply the parking brake and turn the wheels towards the curb to make the car more difficult to tow away.

One relatively inexpensive deterrent is a bar lock that clamps onto the steering wheel to prevent it from turning. This highly visible device may discourage theft, but it is not fool-proof.

Even sophisticated factory or dealer-

installed alarm systems carry no guarantee against theft. A loud alarm may draw attention to a crime, but false alarms are common, and many people have become desensitized. A thief may take an extra moment to silence the alarm and steal the car anyway.

A better anti-theft system includes an ignition, starter or fuel cutoff to disable the engine. Some new cars feature this added protection, which temporarily incapacitates the car if a thief attempts to hot-wire the ignition.

As another deterrent, police officials recommend etching the vehicle identification number onto windows and other major car components.

If you encounter someone breaking into your vehicle, do not intervene. Call the police.

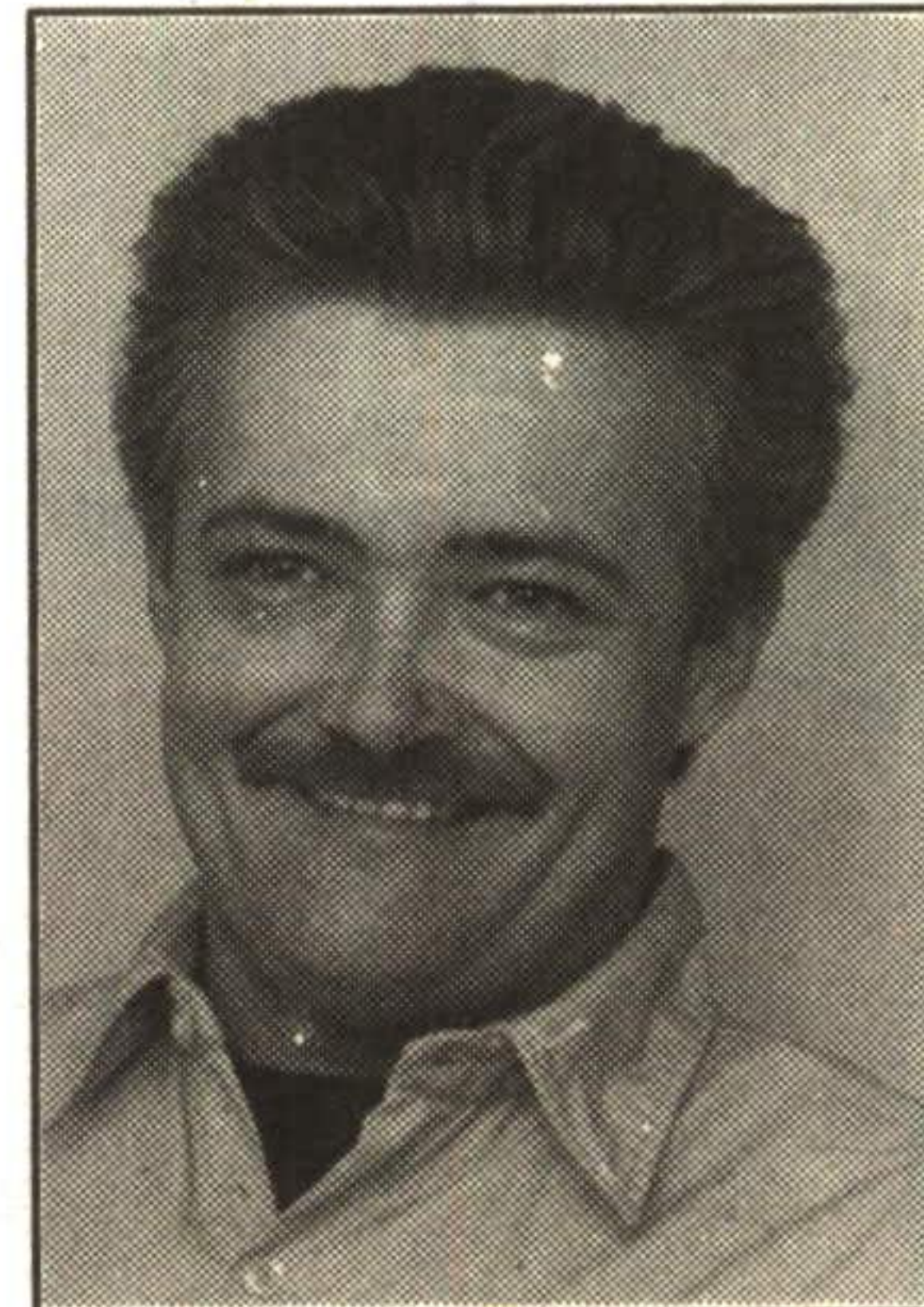


## STORE HOURS

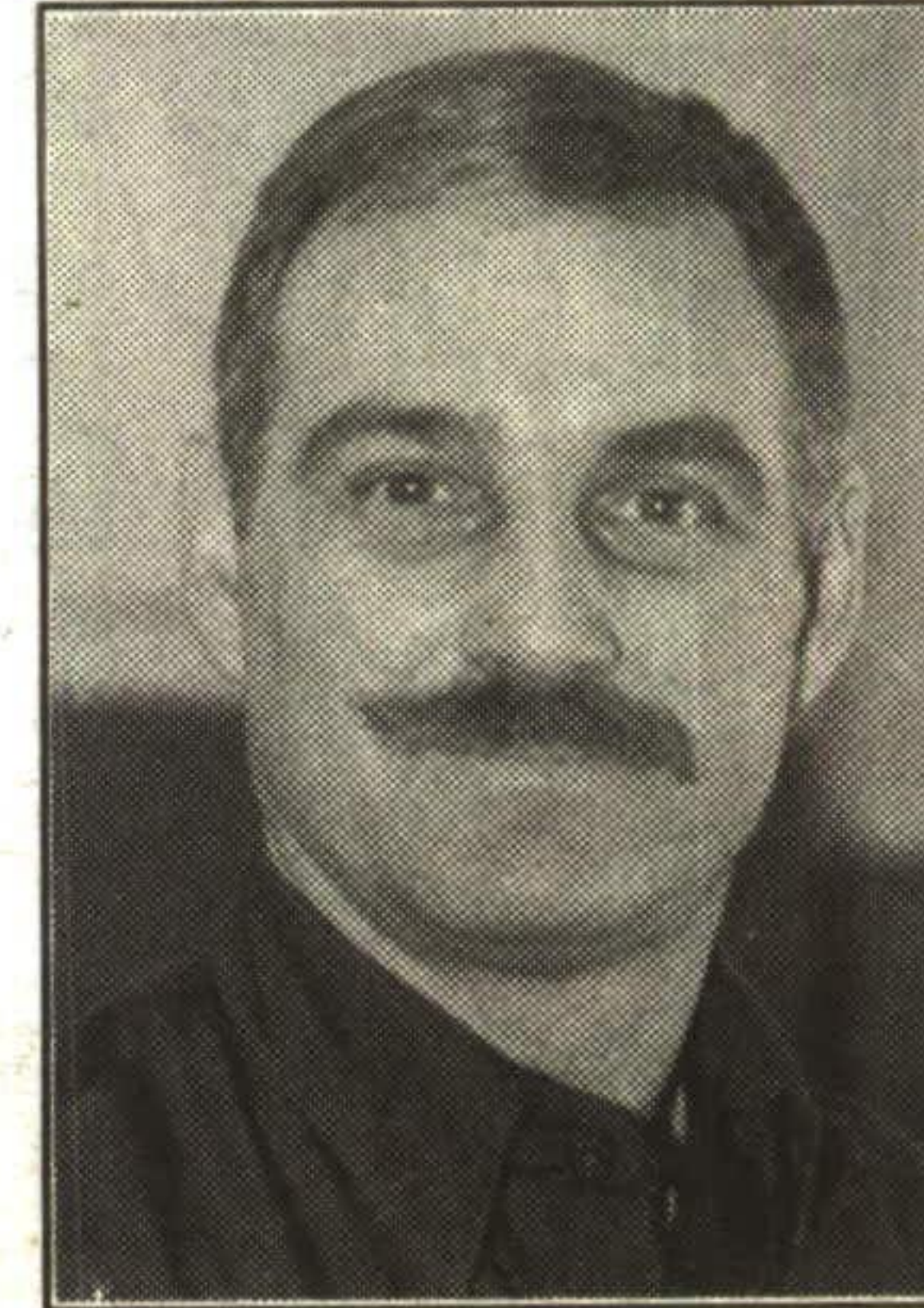
Mon.-Fri. 8:30-8:00 p.m.  
 Saturday 8:30-5:30 p.m.  
 Sunday 11:00 a.m.-5:00 p.m.

## SERVICE

Monday 7:30 a.m.-5:30 p.m.  
 Tues.-Fri. 7:30 a.m.-7:00 p.m.  
 Saturday 8:30 a.m.-3:30 p.m.



**Blair**  
 20+ years experience



**Steve**  
 20+ years experience

# ACTON ONLY GET MORE GOING FOR YOU AT CANADIAN TIRE

• Great service prices • High-tech equipment • Licensed, trained technicians • Parts that meet or exceed original-equipment performance requirements • Nationwide guarantees

**\$20 OFF**  
 GIVE US A TRY ANY INSTALLED AUTO SERVICE OVER \$75

Give us a try and SAVE \$20.00 on any installed auto service (excluding tires and batteries) at participating Canadian Tire Auto Centres.

You get more going for you at Canadian Tire and now for a lot less. Hurry in and save today!

Coupon has no cash value and must be presented at a Canadian Tire store at the time of service. Cannot be used in conjunction with any other offer. Limit one coupon per service. Valid to Friday, April 15, 1994. By law, applicable taxes (GST/PST) must be applied to the price before coupon.  
 TO OUR ASSOCIATE DEALERS: For reimbursement, please send this coupon to: CANADIAN TIRE CORPORATION LTD., Automotive Marketing Department  
 STORE # \_\_\_\_\_ W/O \_\_\_\_\_

## FRONT BRAKES

**79<sup>99</sup>**  
 Installed, up Most cars, light trucks and vans

Here's what we'll do:

- Replace front brake pads with quality Motomaster brake pads with a Lifetime Guarantee. Includes semi-metallic pads where applicable.
- Inspect caliper mounting and sliders  Top up brake fluid
- Inspect rotors for wear and/or damage
- Inspect hydraulic system for leaks

Every brake job is different

Most vehicles require either new rotors or resurfacing of existing rotors. Additional parts and labour are often required at additional cost. A written estimate will be provided.

## OUR BEST MUFFLER

**44<sup>95</sup>**  
 Installed, up Most cars, light trucks and vans

Our best Motomaster muffler at a great price!

Both muffler and engine are guaranteed for as long as you own your vehicle. Patented ALUMIGUARD® construction provides maximum corrosion protection. PLUS we will honour most major muffler competitors' guarantees. Details in-store. 12-2000X

For most imported and domestic cars and light trucks.

Additional parts and installation extra and may be required on some applications.