

# Spring



## Real Estate Showcase



**COUNTRY LOT - VILLAGE SETTING \$189,500**  
**OPEN HOUSE SAT. 1-4 P.M.**

Excellent 4 bedroom. Backsplit offers a family room to grow. A very pretty & private lot with river, new roof '88, new eaves '89, plus main floor family room with fireplace & walkout. The best part - ONLY 30 MINUTES TO BRAMPTON/MISSISSAUGA.  
Call Vickie Gowland\*  
RE/MAX HORIZONS INC. (905) 838-5000



**YOUR HEART DESIRES - \$299,000**

A Specialty Coffee Shop & Ice Cream parlour in busy location with a classic streetcar addition. A turn key operation with extra rental income and all chattels included. This is - YOUR CHANCE TO OWN A BUSINESS - call for more details.  
Call Vickie Gowland\*  
RE/MAX HORIZONS INC. (905) 838-5000



**HIGH TECH PIZZA OPERATION**  
**\$199,900**

Excellent location on Main St., Erin with \$2,500.00 income for a 4 day/week operation. All the best up to date equipment - bright and clean - 1550 sq. ft. total includes 1 bedroom apt. up. It is zoned for various commercial uses, your chance to run your own business. Make an offer!  
Call Vickie Gowland\*  
RE/MAX HORIZONS INC. (905) 838-5000



**OPEN HOUSE SUNDAY 1-4 P.M.**  
**BEST BUY IN ERIN**

Don't miss a chance to view this spacious backsplit on a 60' x 130' treed lot. You'll love the lifestyle, only 30 minutes to Brampton/Mississauga - it's worth a look. It has a family room, 4 bedrooms and 2 baths plus hardwood floors and a bright and attractive kitchen with colonial blue accents. ONLY \$171,900.  
Call Vickie Gowland\*  
RE/MAX HORIZONS INC. (905) 838-5000



**JUST LISTED & SO VERY "SPECIAL"**

One of a kind custom built bungalow on 3/4 acre maturely treed ravine lot. "Special" because of all its desirable features: formal living & dining rooms, spacious family room, 3 fireplaces, party room, inground pool & more. To view call. 94-2-241  
Call Evelyn Henderson\*  
ARTHUR F. JOHNSON & ASSOCIATES 877-5165



**OPEN HOUSE APRIL 3, 1-3 P.M.**

Country Contractors - "EXCELLENT" Shop - House - Inground Pool. All this for \$249,900. Attractive 2300 sq. ft. approx. House has ceramic floors, hardwood, carpet, pine kitchen. Very spacious family room with wall to wall brick fireplace. Just south on Main St. Erin to 10th Sideroad, east 1 km. RCA4-022  
Call Alex\* or Barbara\* Glenn  
ROYAL CITY REALTY (Halton) LTD. 853-2074



**JUST LOOK AT THIS SETTING - ASKING \$259,900**

Between Georgetown and Acton, south on 4th Line 1 km. No wonder the present owners have lived here for about 35 years, landscaped over the years with pride this 1-1/2 acres and fine cared for brick and stone home will sure to please the most discriminating family. Check, it out for yourself and see the future in this home. RCA3-110  
Call Alex\* or Barbara\* Glenn  
ROYAL CITY REALTY (Halton) LTD. 853-2074



**LOCATION! LOCATION! LOCATION!**

Your own park. 1+ acre, close to Georgetown with separately fenced inground pool, stream & pond, backing onto bush! This large 5 bedroom home could easily accommodate in-laws. CW93-126  
Call Maureen Plucinsky\*  
ARTHUR F. JOHNSON & ASSOC. 877-5165

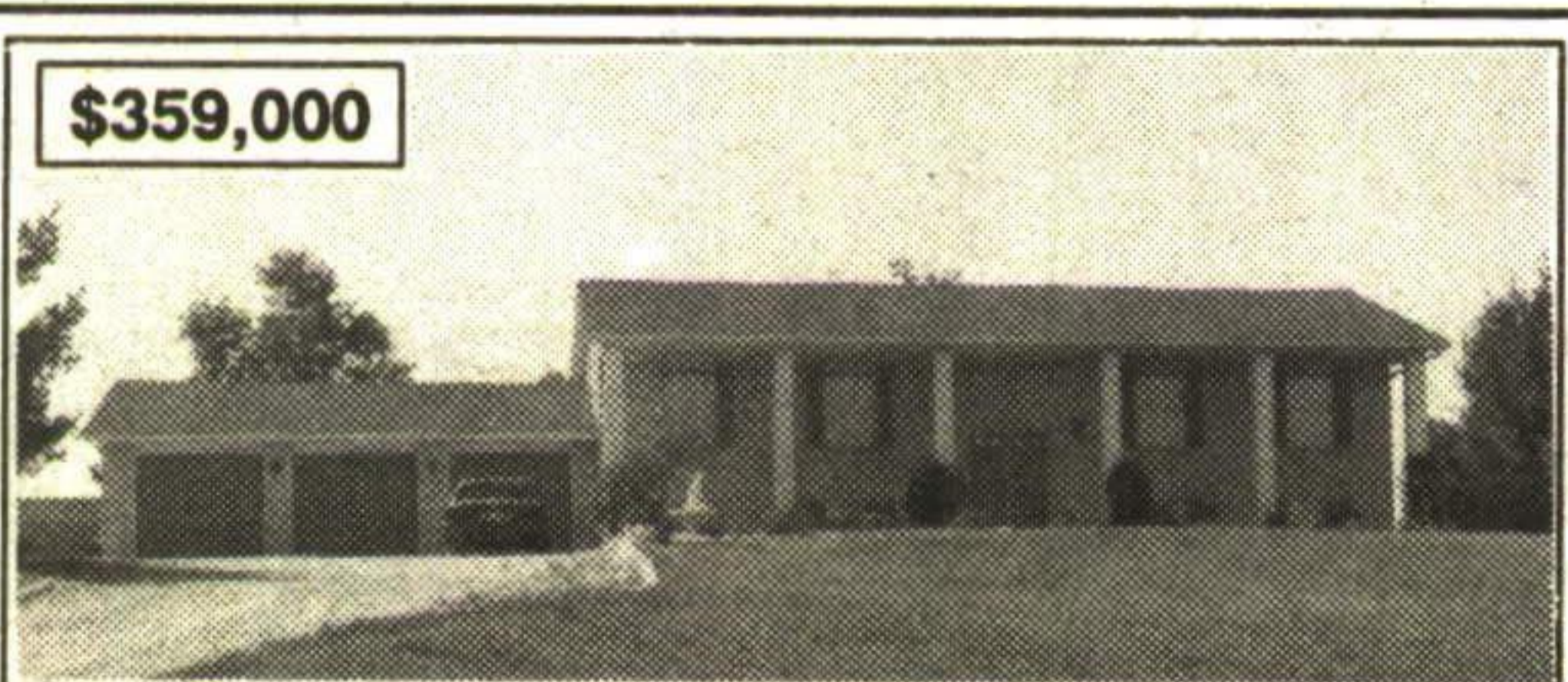


**EXCELLENT QUALITY LOG HOME NEAR HILLSBURGH**  
5 year 3500 sq. ft. white pine log house on 1-1/2 acre, with hilltop vistas. Large principal rooms with 10 ft. ceilings, brick fireplace and maple floors, 4 bedrooms, plus unfinished in-law suite in basement with 2 bedrooms, bath, kitchen/sitting area and walkout. Only the best of materials in this one. All for only \$429,900.  
Call CULVER RILEY\*  
ROYAL CITY (Dufferin) LTD. (905) 450-3355 or (519) 941-5151



**NEW PRICE - HILLSBURGH**

Immaculate 2 storey, 3 bedroom home backing on wooded area. Eat-in bleached oak kitchen adjoins family room with fireplace and walkout to back deck and fenced yard. Access to single attached garage. Full unfinished basement. Excellent starter home and community for young family. All this for only \$154,900.  
Call CULVER RILEY\*  
ROYAL CITY (Dufferin) LTD. (905) 450-3355 or (519) 941-5151



**SPECTACULAR 10 ACRE ESTATE**

Million dollar view & unsurpassed quality in this magnificent raised bungalow with fully finished walkout basement, solid oak throughout, massive fieldstone fireplace, large pond and barn. 93-2-643  
Call Gloria Foreman\*  
ARTHUR F. JOHNSON & ASSOC. 877-5165



**DESIRABLE HOLLY MODEL**

Spacious ravine lot, end unit, central air, walkout from kitchen to 12' x 12' deck plus upgrades galore. 94-2-159  
Call Evelyn Henderson\*  
ARTHUR F. JOHNSON & ASSOC. 877-5165