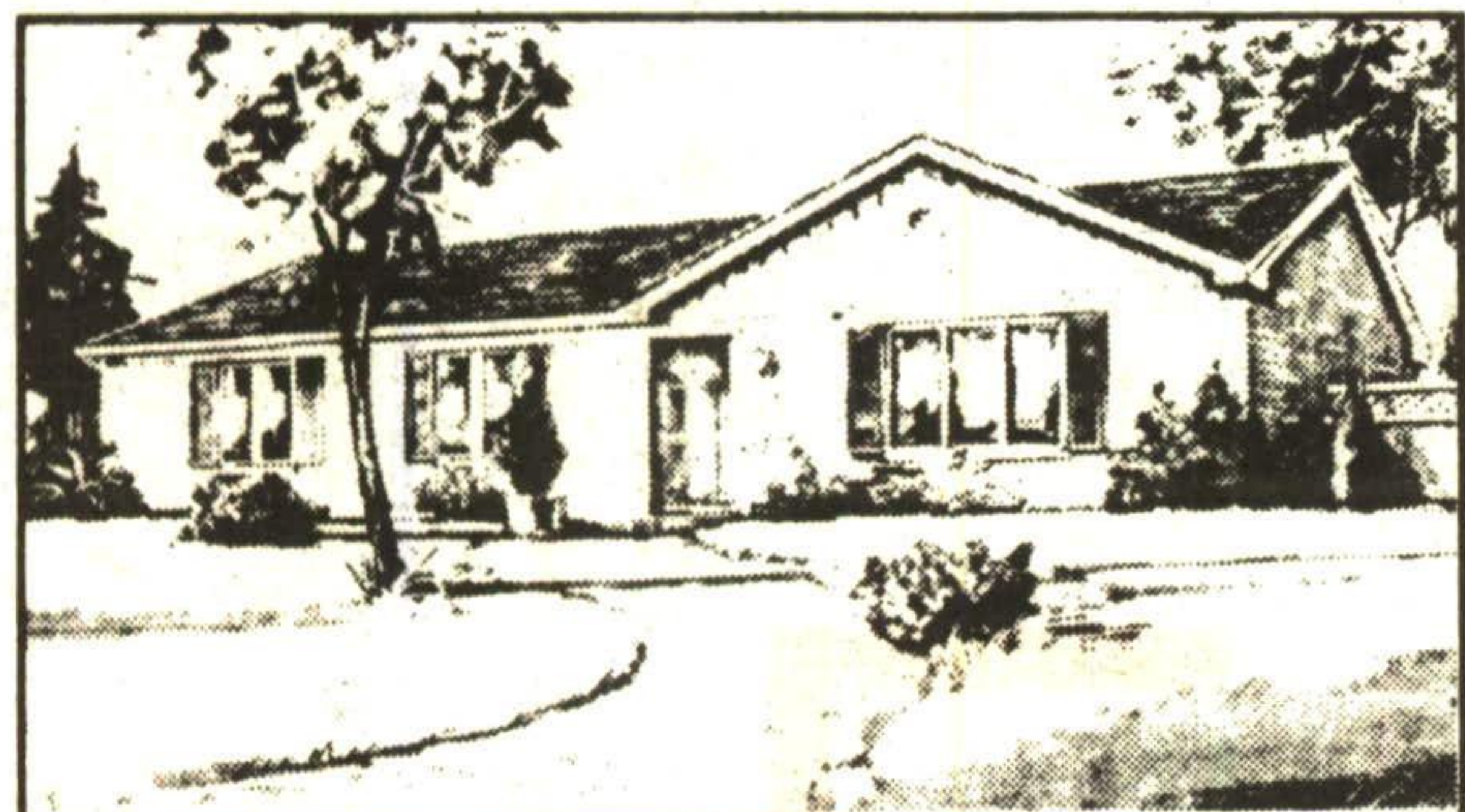


What kind of lifestyle are you *really* searching for in a new home?



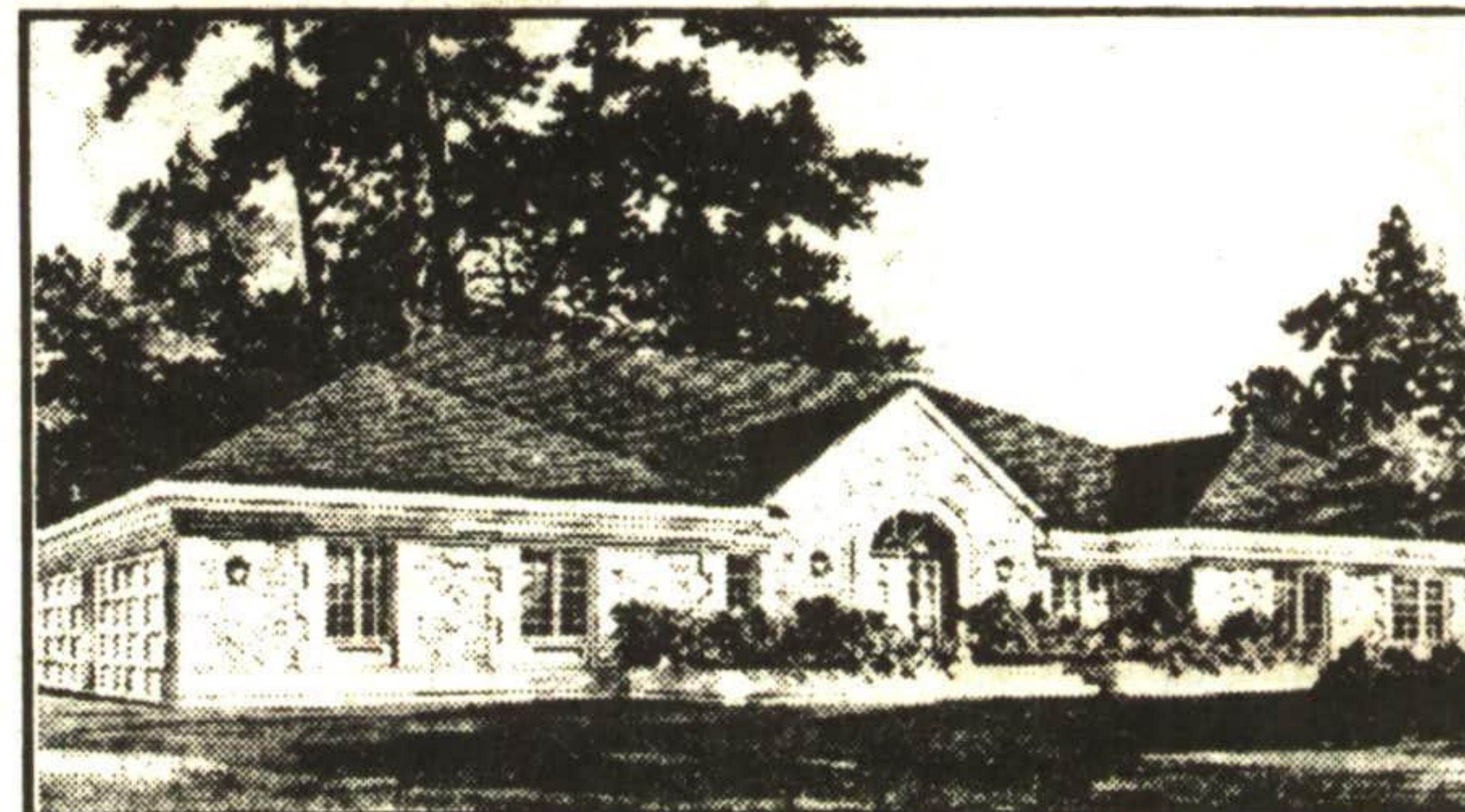
Affordable 3 bedroom luxury.
Main floor laundry and powder room.

Riverstone A 1248 sq. ft.



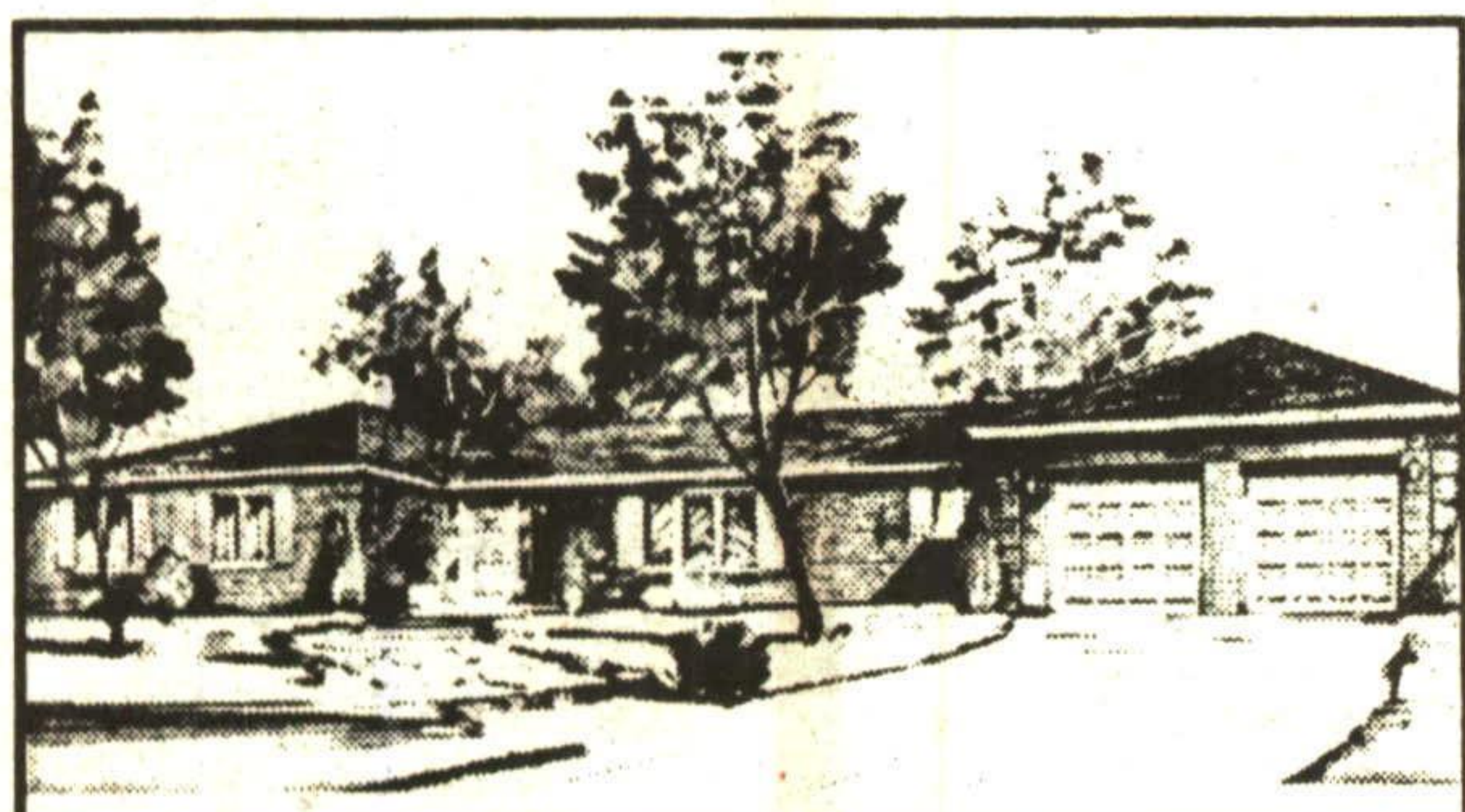
Spacious 4 bedroom design.
Bright, open kitchen, nook, family room.

Meadowvale 2492 sq. ft.



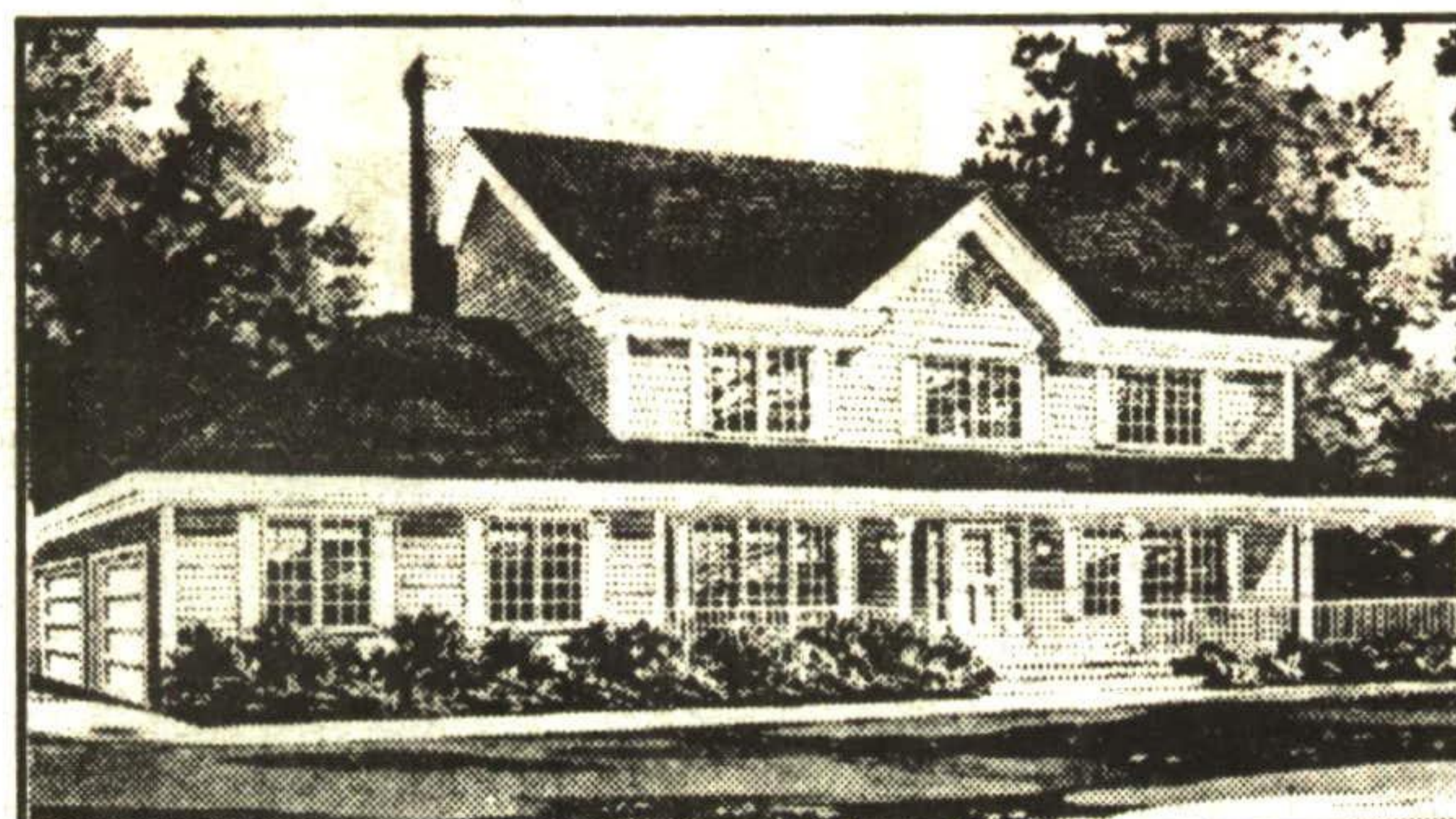
Luxury, 3 bedroom design.
Vaulted entry to spacious living.

Monticello 2672 sq. ft.



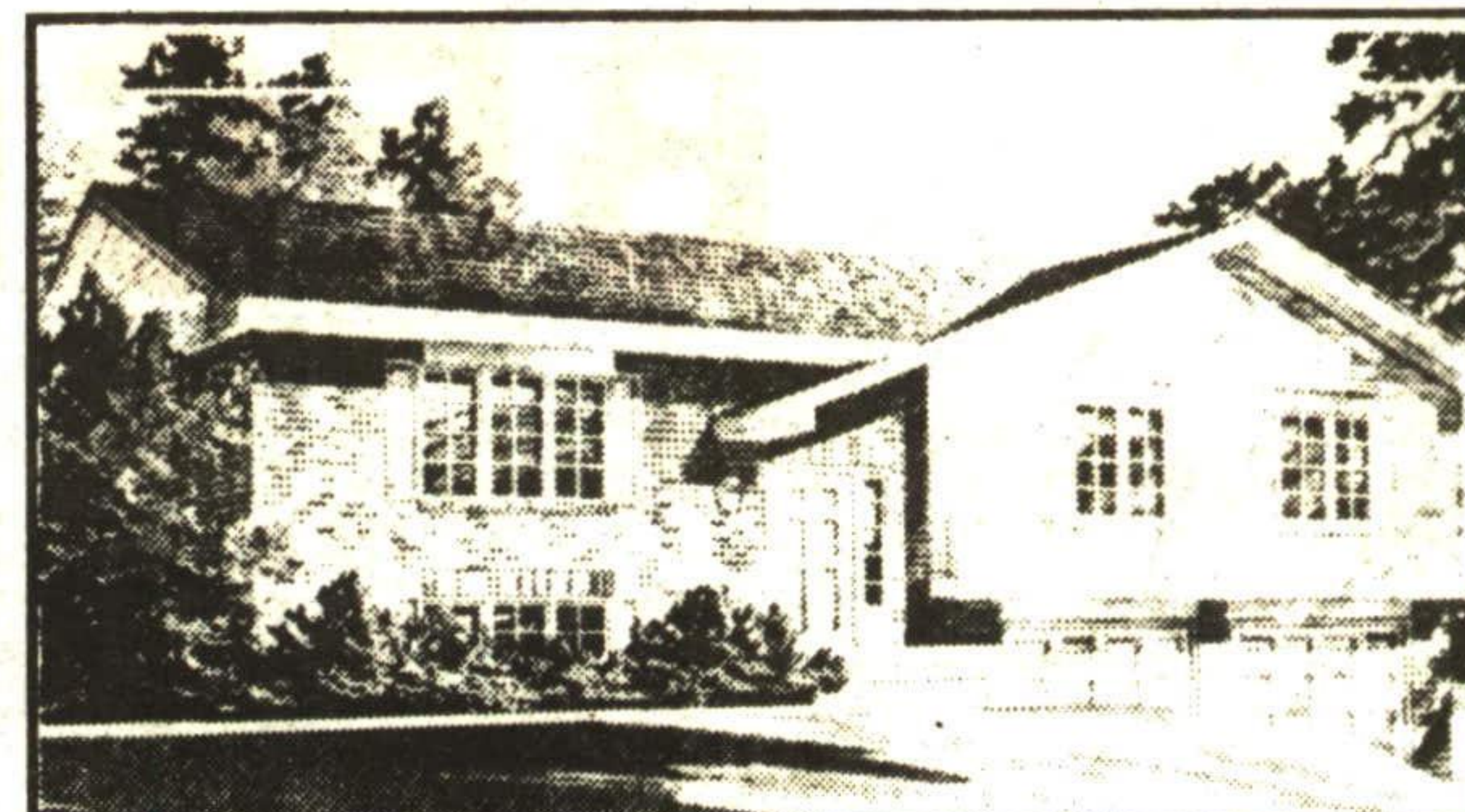
Spacious 3 bedroom plan.
Huge great room and front kitchen.

Bayfield A 1840 sq. ft.



Country modern 3 bedroom plan.
Huge ensuite. Wrap around porch.

Minto 2128 sq. ft.



Spacious raised bungalow.
Main floor laundry and mud room.

Carlysle 1320 sq. ft.



Space

LOTS TO 3/4 OF AN ACRE
Gently rolling terrain. Spacious yards, privacy.
Escarpment views.



Affordability

PRICES FROM \$178,900, GST included.
Energy efficient QUALITY HOMES built to
R2000 specifications. Reasonable realty taxes.



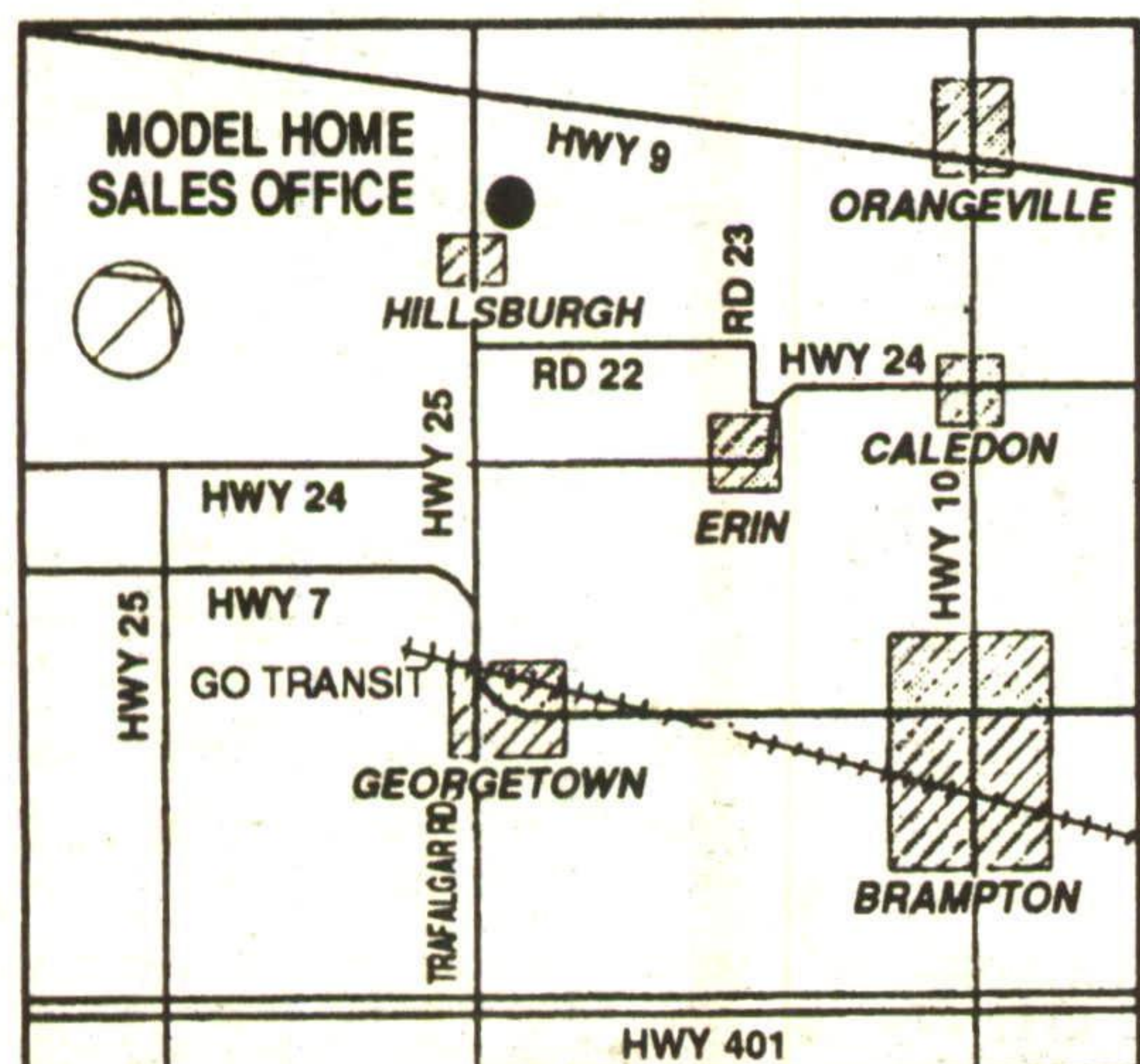
Convenience

FULL SERVICE HILLSBURGH
Shopping, banking, recreation and MORE.
Natural gas, cable T.V., hydro, town water.



Selection

BUNGALOWS - 2 STOREY - SPLIT LEVEL
Over 25 models. Walk-out and side split lots.
Custom design services.



**HIGHLANDS
AT
HILLSBURGH**

Visit our on-site sales
office and model home

Weekdays
10:00 am to 5:00 pm
Weekends
12:00 noon to 4:00 pm

1-519-855-4300

Country Living with City Conveniences