

WANTED

FAMILIES TO MAKE THESE HOUSES

Homes



COUNTRY SPLENDOUR \$249,900

2.27 acres. Back half treed. Great layout from the ceramic entrance to the hardwood floor in the dining room and huge country kitchen overlooking new deck. House is 7 years old. 4 bedrooms, sauna, hot tub, main floor laundry and double car garage with entrance to house. RM038-94

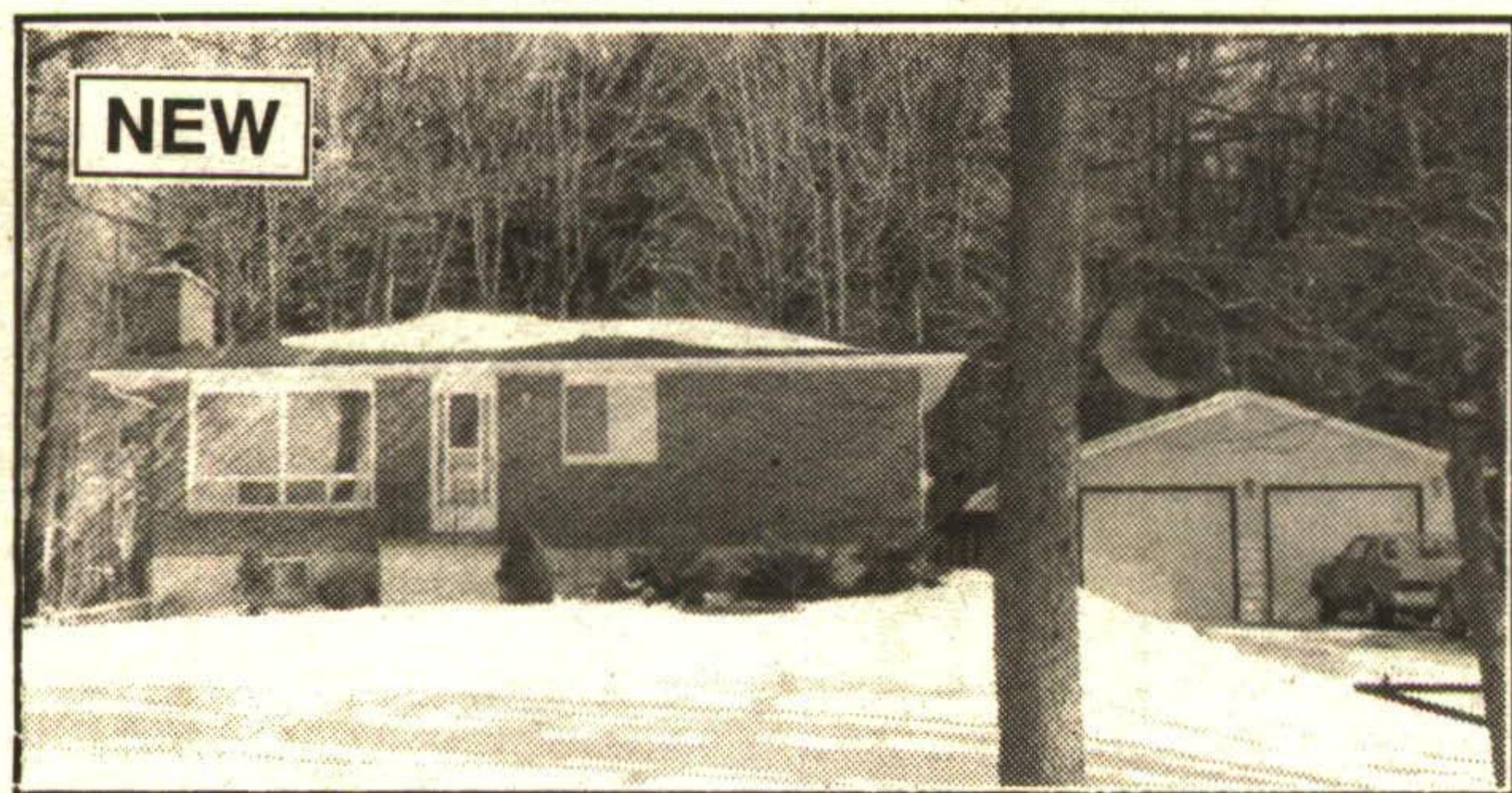
Call DONNA RAE* for details



NEW - \$129,900

First time buyers delight. Hardwood floors, nice bright kitchen, large yard 65x168. Single detached garage. Quiet dead end street. Walk to schools and downtown. Have you been renting but want to own your own home. Call me for details, I can help. RM330-93

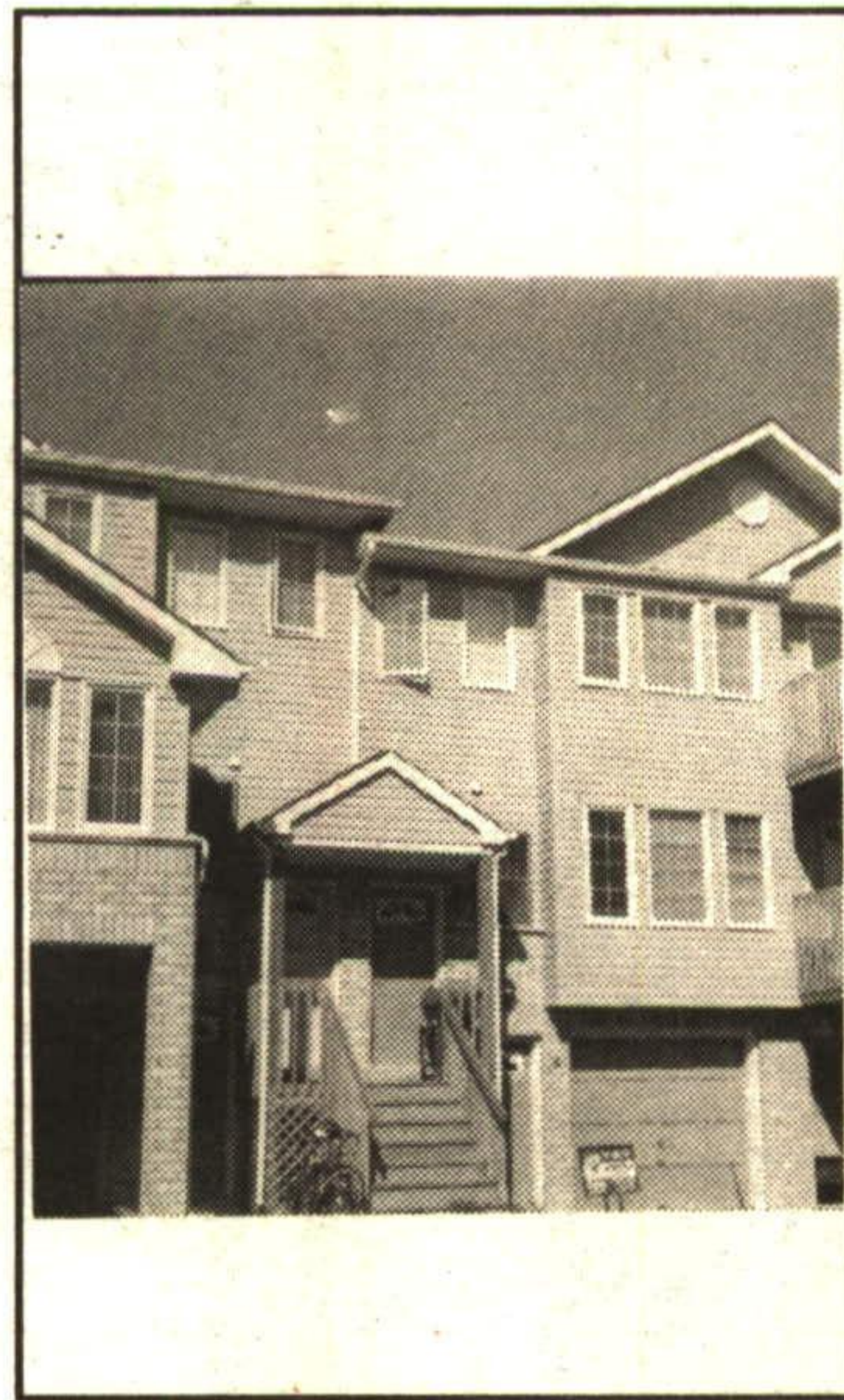
Call DONNA RAE* for details



APPROX. 4 ACRES

Fantastic country brick home, 3 bedrooms, 2 washrooms, 2 fireplaces. Oversized 2 car insulated heated shop with office. Immaculate and very bright throughout, 2 rec rooms in basement. Gorgeous and well worth a look. \$279,000. RM077-94

Call DONNA RAE* for details



CALL NOW

Great buy. Great buy. Great price, great layout and great time to buy. 3 bedrooms, 1 used as a family room, ground floor walk-in, single garage, patio walkout. Call for first time buyer advantage. RM239-93

Call DONNA RAE* for details

GREEN THUMB GARDENING



By CHRISTINE COLE

TRANSPLANTING TIME

Spring is just around the corner now, and the natural light is increasing in duration and intensity. This results in a burst of house plant growth as well. Just before the plant starts to initiate a lot of new growth, is the most appropriate time to transplant them. Some houseplants may be pot bound, while others may have a build-up of salts in the soil (white crusty material on pot and/or soil). Regardless of the situation all of your houseplants will benefit from transplanting. Most houseplants should be transplanted once per year, but others will only need it every 3 to 4 years. The general health of the plant and its vigor will dictate how often it will require transplanting: quick growing plants would require transplanting more frequently.

Whenever you move a house plant into a larger pot, always increase the pot by one size at a time. For example: a plant in a 3 inch pot should be transplanted into a 4 inch pot rather than a 6 or 8 inch. Otherwise, you will run the risk of causing root damage since there is too much soil in proportion to the amount of roots. The excess soil in a large pot will hold moisture that the roots can not use up quickly consequently, there will be a lack of oxygen to the root system. For the same reason, do not overwater freshly transplanted houseplants until they have had a chance to develop some new roots.

Once you have taken the plant out of its old pot remove as much soil as possible without damaging the root system. If the plant has an extensive root system, some of the large, thick roots can be cut off (but try not to remove too much of the fine root hairs). If you place a thin layer of pebbles in bottom of new pot the soil will not run out of drainage hole. Place a layer of new soil on top of pebbles, then set plant in pot. Work new soil in and around root system, until soil is at same level on plants as before. The plant will not require fertilizing until it is showing signs of vigorous root and shoot growth.

Each week Christine Cole of Tuitman's Garden Centre and Landscaping, Highway 25, 1 mile south of Acton, 853-2480, will be presenting helpful tips and information to assist you in creating your garden show-place!

TUITMAN'S GARDEN CENTRE
ACTON
853-2480



DONNA RAE

Sales Representative



RE/MAX
877-5211

SUBURBAN (91) INC.

24 HR. PAGER

350 Guelph St. Georgetown