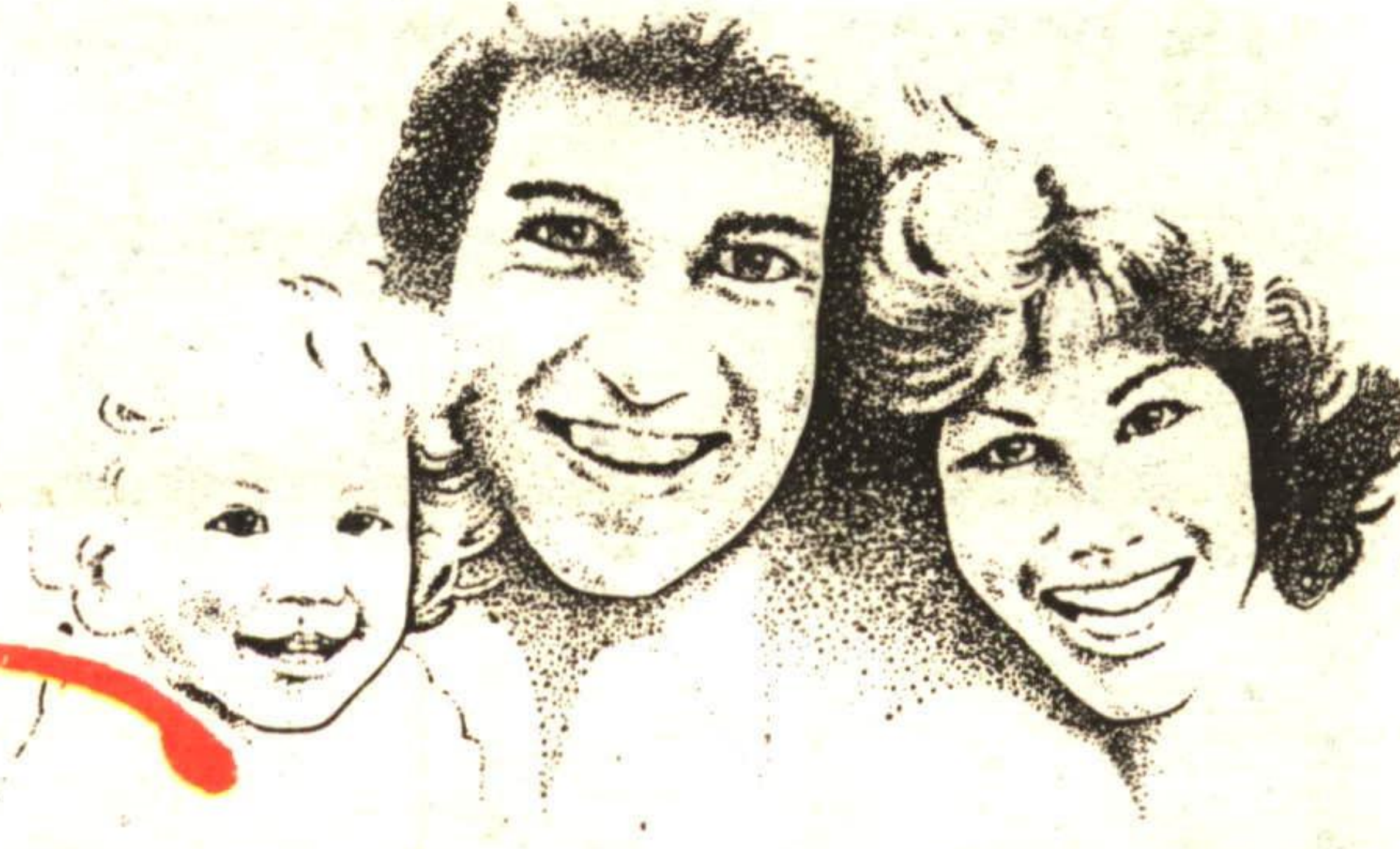


# WANTED

FAMILIES TO MAKE THESE HOUSES

# Homes



### COUNTRY SPLENDOUR \$249,900

2.27 acres. Back half treed. Great layout from the ceramic entrance to the hardwood floor in the dining room and huge country kitchen overlooking new deck. House is 7 years old. 4 bedrooms, sauna, hot tub, main floor laundry and double car garage with entrance to house. RM038-94

Call DONNA RAE\* for details

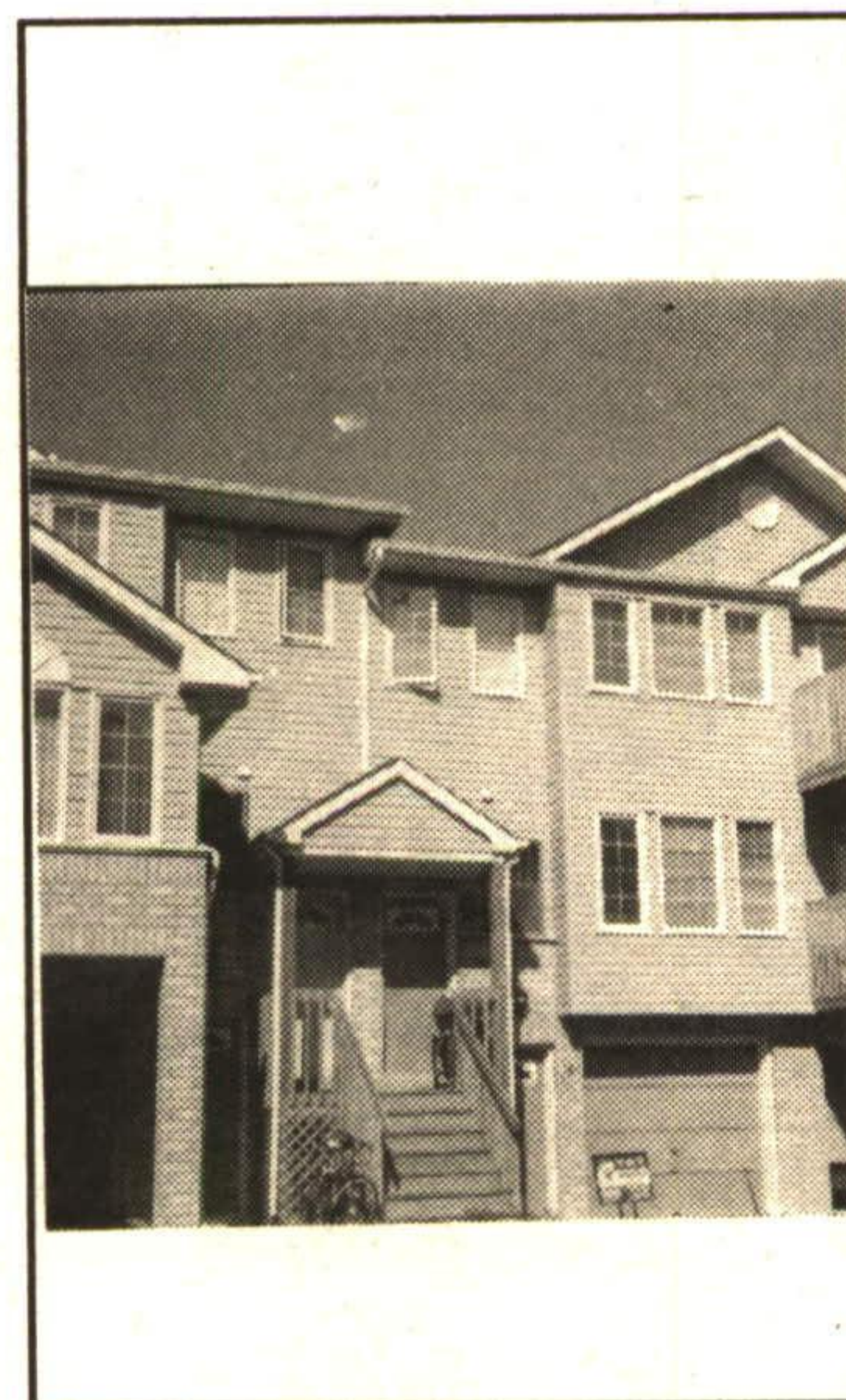


### NEW - \$129,900

First time buyers delight. Hardwood floors, nice bright kitchen, large yard 65x168. Single detached garage. Quiet dead end street. Walk to schools and downtown. Have you been renting but want to own your own home. Call me for details, I can help. RM330-93

Call DONNA RAE\* for details

Call for your  
**FREE Market Evaluation!**  
Your home will be advertised until  
**SOLD!**



### CALL NOW

Great buy. Great buy. Great price, great layout and great time to buy. 3 bedrooms, 1 used as a family room, ground floor walk-in, single garage, patio walkout. Call for first time buyer advantage. RM239-93

Call DONNA RAE\* for details



# DONNA RAE

Sales Representative



# RE/MAX

877-5211

SUBURBAN (91) INC.  
24 HR. PAGER 350 Guelph St.  
Georgetown

## GREEN THUMB GARDENING



By CHRISTINE COLE

### COMPLICATIONS WITH COMPOSTING

Backyard composting has become so popular that it is nearly a fact of life now. However, like many things in life it doesn't always go the way it is supposed to in theory. In theory, within a few months to one year your kitchen and garden wastes are supposed to transform into a rich, loose, odorless soil-like product. This can then be used as a mulch or topdressing, nutrient "tea" and soil amendment. However, like many things in life, it doesn't always go the way it is supposed to in theory.

A few complications you may encounter along the way:

**Invasion of Insects or Animals:** Usually attracted to compost when you add meat, fish or dairy products. If you are not presently adding these but they are still invading the compost, then dig all food waste into pile or cover it with soil.

**Foul Odor:** Caused by a lack of air - turn, dig or turn the compost pile to aerate it. An excessive of moisture could also cause this. The addition of dry materials will help to absorb the moisture.

**Lack of Action:** In other words, you're adding your wastes but it isn't magically turning into a soil-like material. This is the most common complaint. Composting requires some moisture to work, but not too much or too little! Too much causes an odor, whereas too little ceases activity. Simply add some water and work it in. Of course, during the winter months the pile is frozen, so nothing will happen until spring, when it thaws. Also, for proper action there should be some green (nitrogen) and brown (carbon) material added to pile. If you have too much of one or the other the action will slow down. Try to maintain a proper balance. Last but not least be patient, compost will eventually be created. If you can't wait, the addition of a compost accelerator can be purchased and sprinkled on the pile to speed up the process.

Each week Christine Cole of Tuitman's Garden Centre and Landscaping, Highway 25, 1 mile south of Acton, 853-2480, will be presenting helpful tips and information to assist you in creating your garden show-place!

**TUITMAN'S GARDEN CENTRE**  
ACTON  
853-2480