



ROOMY - AND LOADED

Main floor family room, 4 bedrooms, fireplace, double car garage, Scarlett O'Hara staircase & 3 bathrooms & more. Almost 2800 sq. ft. Offered at just \$239,900. For a personal tour please call **MAL DODGE*** RM060-94



CHECK THIS OUT

\$6,000 down carries \$815.10 principal & interest. Lowest maintenance fees in Georgetown. No water bill, no TV, cable bill and we cut the grass. Three bedroom end unit, country size kitchen, finished rec room, new broadloom & clean as well. For a personal tour call **MAL DODGE* 877-5211**. RM019-94



Mal Dodge
Sales Representative
(905) 877-5211



Suburban (91) Inc., Realtor
360 Guelph Street, Georgetown

Royal LePage Real Estate Services Ltd., Realtor
170 Guelph St., Georgetown



877-0173

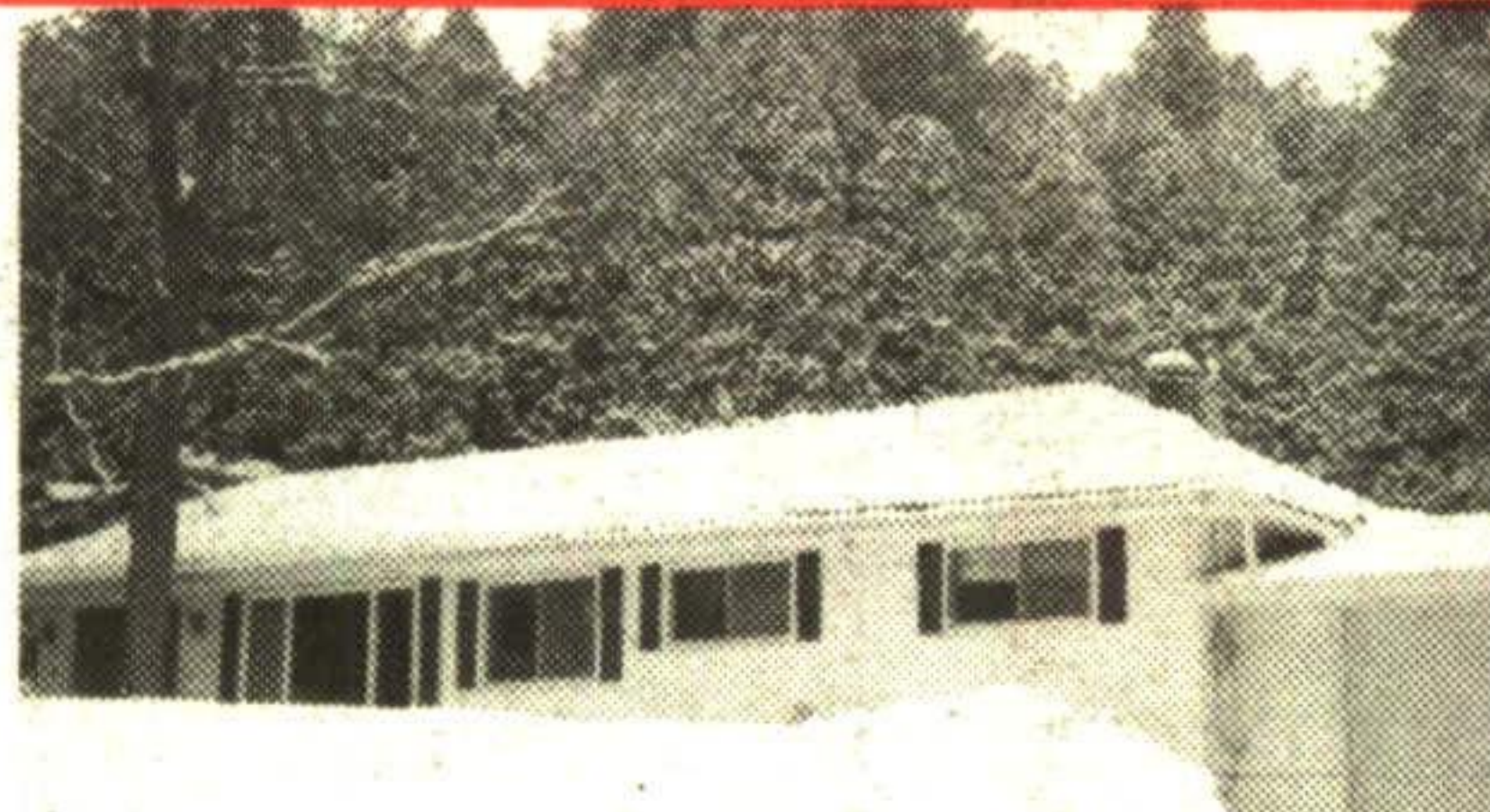
Tor. 874-3068
*Sales Rep.



BETTY MCKEND*

\$183,900

Love the street! Love the lot! Cosy 3 bedroom home with country kitchen - fireplace in living room. Betty McKend*. 32-41



\$102,000

NEW LISTING

Compact Bransdale townhouse with 2 parking spaces. Suit a career person with good transportation nearby. Betty McKend*. 32-42



DONNA ROBBINS*

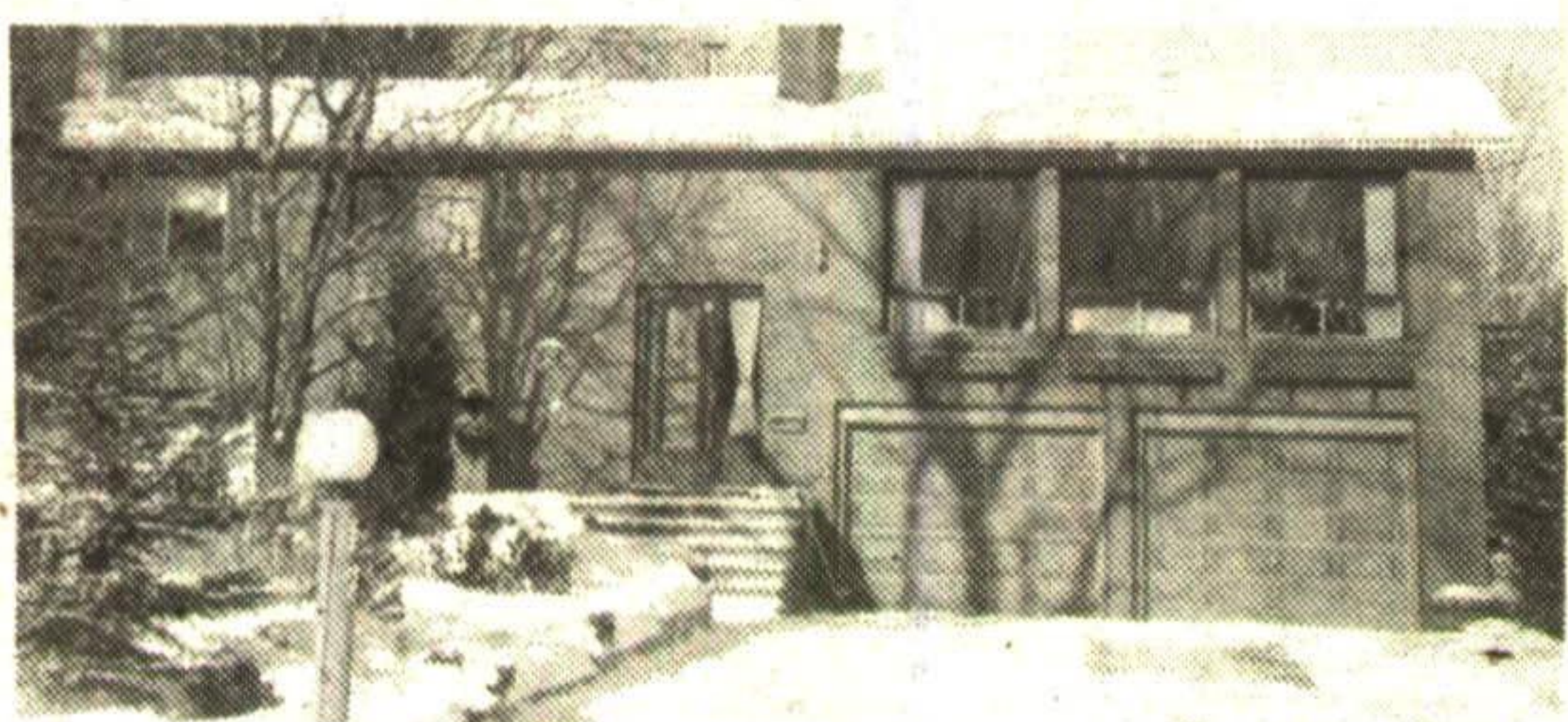
ONLY 15 MINUTES TO 401

22 year old country home in Halton Hills on 10 acres of rolling terrain, mature trees, pond, inground pool. New carpeting throughout, alum. eaves, soffits, fascia, roof shingles in '92. For viewing call today. Donna Robbins*. 13-11



WHY LIVE IN THE GLEN?

Why not! It is close to the 401 and the "GO" train plus it is situated in a hamlet with the quaintness and serenity of country living. All this and a beautiful well-maintained home on 3/4 of an acre can be yours for only \$274,000. Call Donna Robbins*. 13-12



SUSAN WHITTEKER*

OPEN HOUSE CANCELLED

... unit townhouse loaded with extras - CAC, gas fireplace, interior door to garage and much more. Definitely a must see! Susan Whitteker*. 20-11



A HOLLY ON THE RAVINE

Sit by the woodburning fireplace with its oak mantle. Exceptionally well maintained townhouse with full master ensuite bathroom and a walk-in closet. Call to see this one at only \$144,900. It won't last long. Susan Whitteker*. 20-12



COUNTRY SETTING

3 + 1 bedroom bungalow on just over an acre lot. Bright eat-in kitchen, hardwood floors in main level bedrooms and wood burning fireplace in living room. If you want country, then you must see this one. \$180,000. Susan Whitteker*. 20-13



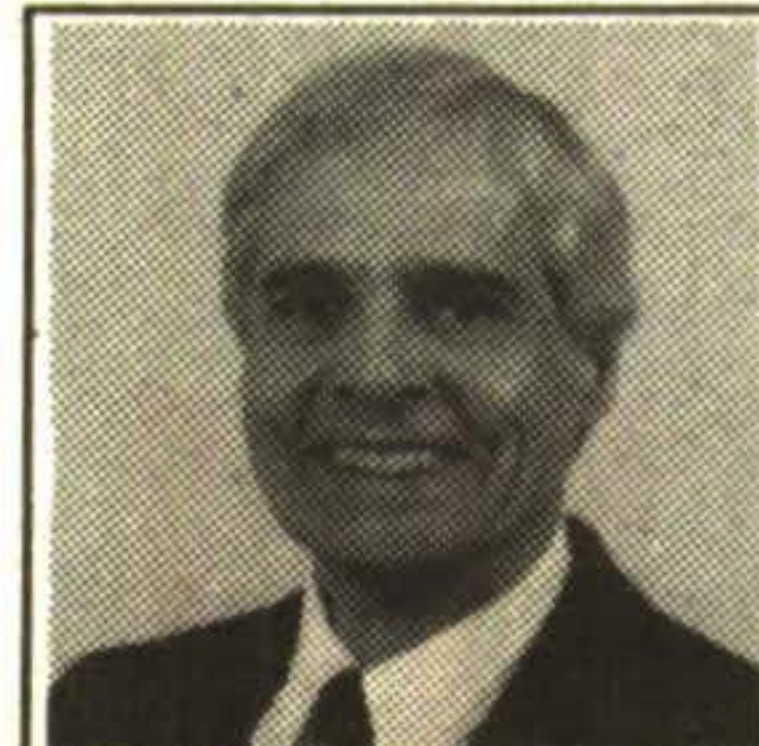
JOHNSTON & DANIEL

The Right Connection



Carole MacLeod*

*Sales Representative



Malcolm MacLeod*

CLASSIC STONE REPRODUCTION

Majestically sited on 41 acres, sparkling swimming pond, separate Coach House, small barn. Offered for sale at \$799,900. Breathtaking!

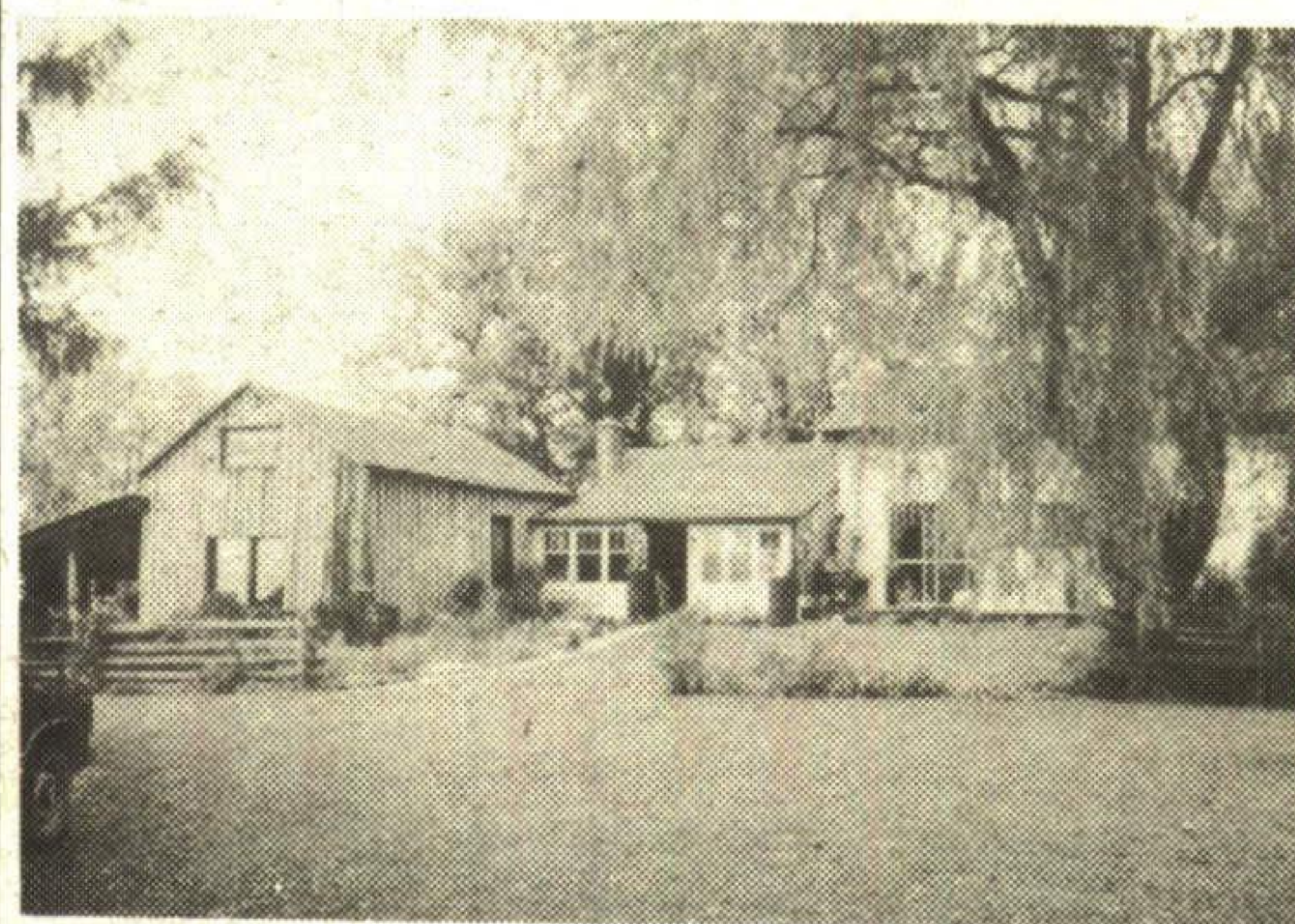
JD93-083



A PLACE TO HANG YOUR HEART

97 acre Caledon farm. Fertile fields. Long views. Warm & welcoming farmhouse. A treasure!

JD93-113



LUXURY HORSE FARM

1866 stone home, 19 stall barn, 60' x 120' arena, close to Terra Cotta. Fenced fields, rolling terrain, wood lot. A good investment opportunity at \$795,000.

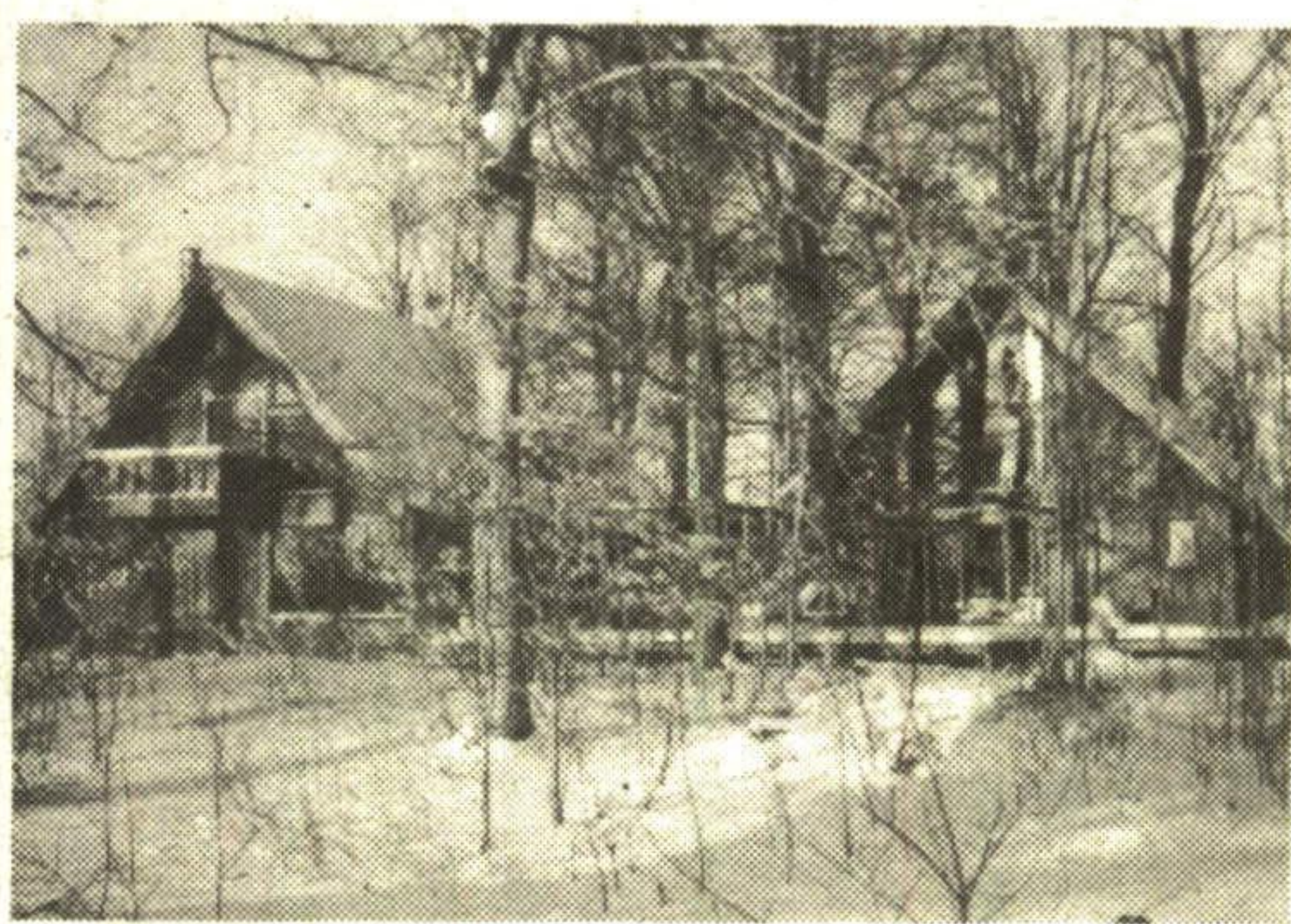
JD-078



CEDAR POST & BEAM COUNTRY HOME

Set back on 2.8 acre woodlot, large windows & walkouts to decks, balconies & woods, excellent Limehouse location, easy commute. Offered at \$297,000.

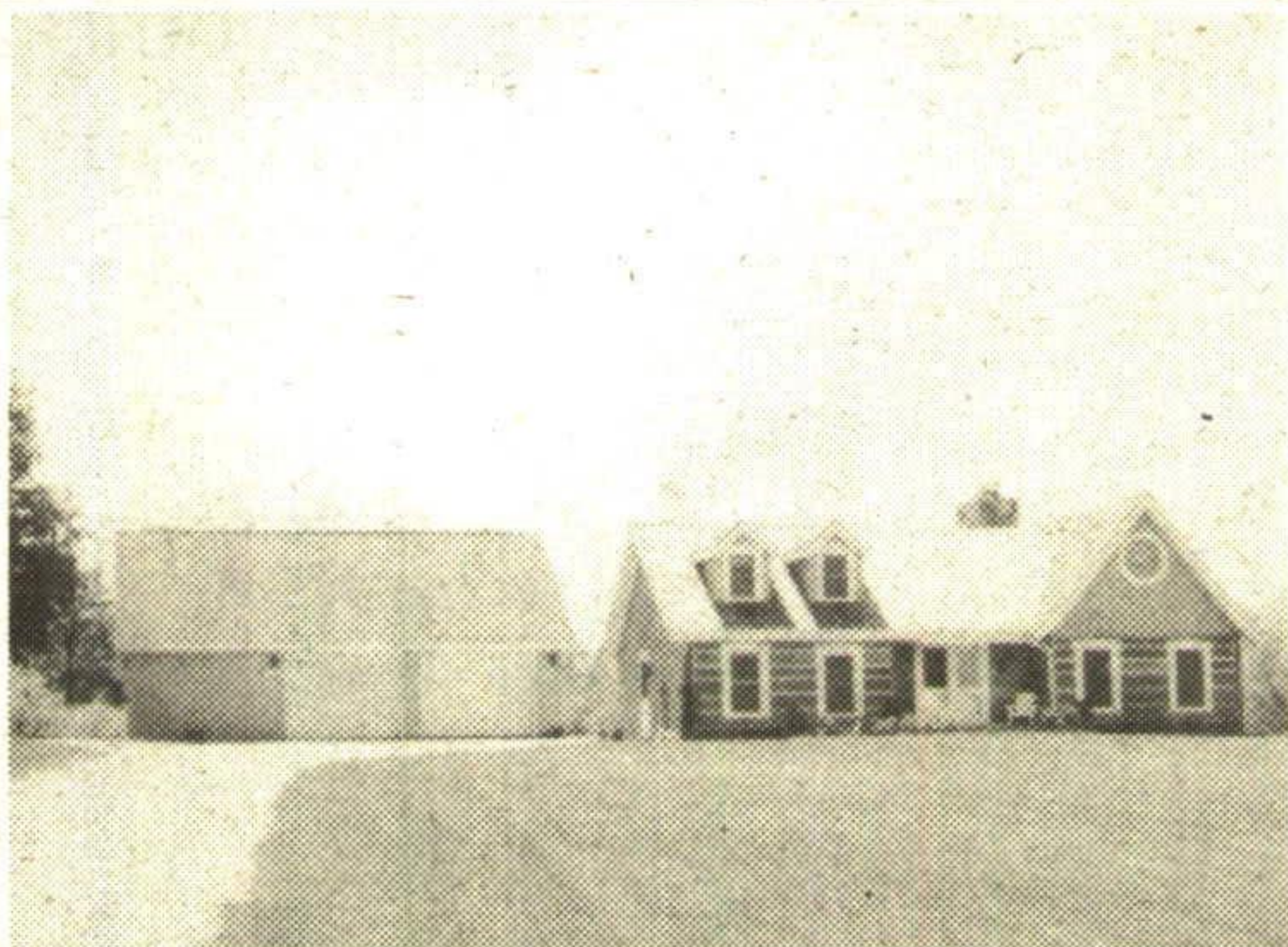
JD94-02



LIVE & WORK FROM HOME

Sited high on a hill overlooking golf course, 4-1/2 acres, pond, log house, separate offices. Country living at its best. Offered at \$375,000.

JD93-072



96 ROLLING ACRES

Fully renovated farmhouse, large bank barn, 2 ponds, long views, easy commuting access. Well priced at \$375,000.

JD93-118



Our office, well located in the Village of Cheltenham, is only minutes from Georgetown. This setting allows us to serve you better from its vantage point to commuting routes & the various towns & villages that make our town & country community so special. Whether you are a first time buyer, a retiree, planning to build, moving up or scaling down, we can offer our expertise, knowledge & time to help you realize your goal. Call today, ask for Carole or Malcolm MacLeod, serving Halton Hills, Caledon & Erin Township.

14396 CREDITVIEW ROAD, CHELTENHAM, ONTARIO L0P 1C0
TELEPHONE (905) 838-3830 (CALEDON) 874-3086 (TORONTO LINE)