

# Advanced Notice!

**OPEN HOUSE**  
**SUNDAY, FEBRUARY 20**  
 1:30 - 4:30

12500 17<sup>TH</sup> SIDEROAD  
 (MAPLE AVE., HALTON HILLS)

Seclusion just minutes from town. 3,000 sq. ft. 4 bedroom home with fabulous 34 ft. x 11 ft. solarium, main floor family room with fireplace, rec room with fireplace, and office plus potential in-law suite or hobby room. Call Gloria Foreman\*.  
 93-2-614



**Town & Country Specialist Since 1970**



Gloria Foreman\*

247 Guelph St. **877-5165**  
 Georgetown  
 \* Sales Rep.

**ARTHUR F. JOHNSON & ASSOCIATES LIMITED REALTOR**

*Our Real Estate Marketplace floats above the rest! Call Lana or Tanya Today to Place an Ad! 873-0301*

**INDEPENDENT** Happy Valentine's Day! **FREE PRESS**

Royal LePage Real Estate Services Ltd., Realtor  
 170 Guelph St., Georgetown

**ROYAL LEPAGE**

**877-0173**  
 Tor. 874-3068  
 \*Sales Rep.



BETTY MCKEND\*

**\$355,000**

Growing family? Lots of space in this country exec. home minutes from town. See it with Betty McKend\*.  
 32-38



Royal LePage Real Estate Services Ltd., Realtor  
 170 Guelph St., Georgetown

**ROYAL LEPAGE**

**877-0173**  
 Tor. 874-3068  
 \*Sales Rep.



SUSAN WHITTEKER\*

**END UNIT TOWNHOUSE**

Enjoy the gas fireplace during the cold winter months, and the central air conditioning in the hot summer months. This Mulberry is in move in condition and includes all the appliances. All this and more for only \$134,900. Susan Whitteker\*.  
 20-11



**RAVINE VIEWS**

Larger Holly model with woodburning fireplace and walkout from lower level to patio overlooking the ravine setting. Open concept kitchen and double sink. Full master ensuite and walk-in closet in master bedroom. Bright, clean and tastefully decorated. Only \$144,900. Susan Whitteker\*.  
 20-12



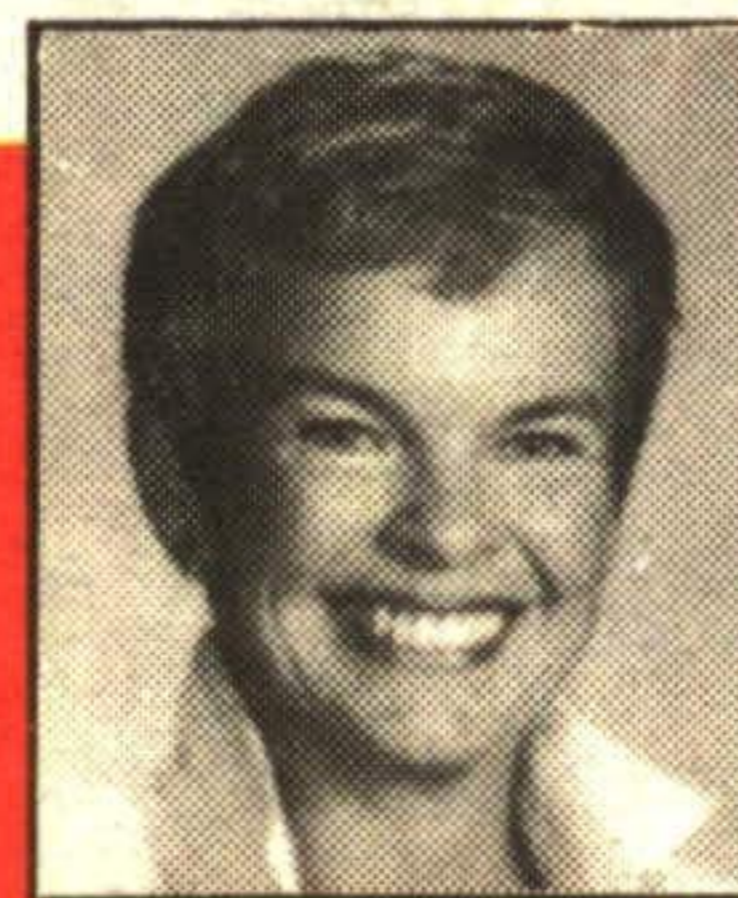
**COUNTRY BUNGALOW**

Great 3 bedroom home on the outskirts of Ballinafad. Woodburning fireplace in living room and eat-in kitchen. Nicely finished rec room with 4th bedroom. All on just over an acre for only \$180,000. Susan Whitteker\*.  
 20-13



**\$168,900**

**SOLD**  
 Cosy 3 bedroom home close to town on mature 1/2 acre. Discover this treasure with Betty McKend\*.  
 16-111



DONNA ROBBINS\*

**\$249,900 NEW PRICE HALTON HILLS**

Cosy home on 10 gorgeous acres located only 15 minutes from Hwy. 401. Features include aluminum eaves, soffits, fascia, roof shingles new in '92, 2 car garage, inground pool, natural pond. For viewing call Donna Robbins\*.  
 13-11



**\$274,000 - NEW LISTING - GLEN WILLIAMS**



Located on a dead end street, this home is within walking distance to the Credit River, public school and country stores. The oak door frames, ceiling beams and kitchen cupboards all contribute to the cosy comfort of a country feeling. Two fireplaces, central vac, air conditioning, hardwood floors, large windows, ensuite and more are features waiting just for you. Call Donna Robbins\*.  
 13-12

**NOW!**  
*...IS THE TIME!*

*to list your home for the Spring Market.*



**PAM REID\***  
 \*Sales Representative

"PERFORMANCE COUNTS"

**877-5165**

TOR. 874-3040

24 HR. PAGER

**ARTHUR F. JOHNSON & ASSOCIATES LIMITED REALTOR**

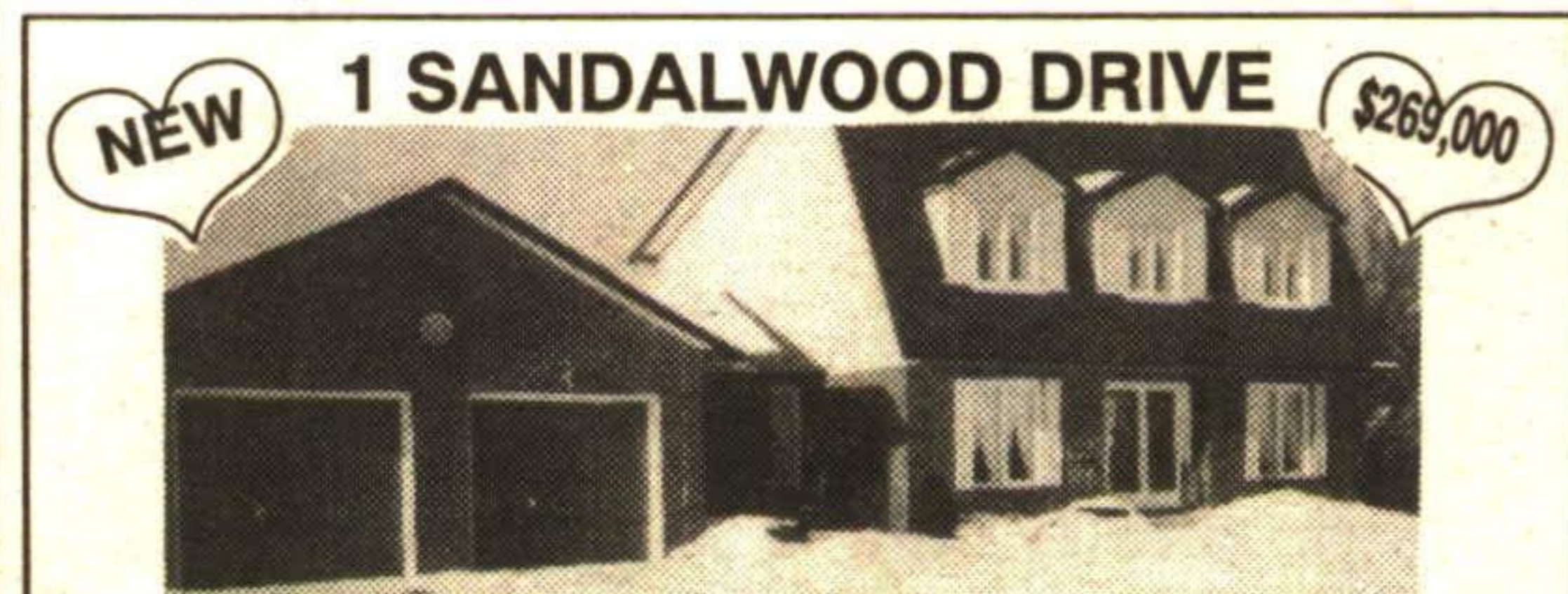
**I have buyers for a 4 Bedroom House in town, pool preferred. Call Pam Reid\* today.**



**\$89,900**

**ONLY \$89,900**

Perfect for a home renovator. Lot size 66' x 165'. Gas furnace. Call Pam Reid\* before it's gone.  
 93-2-647

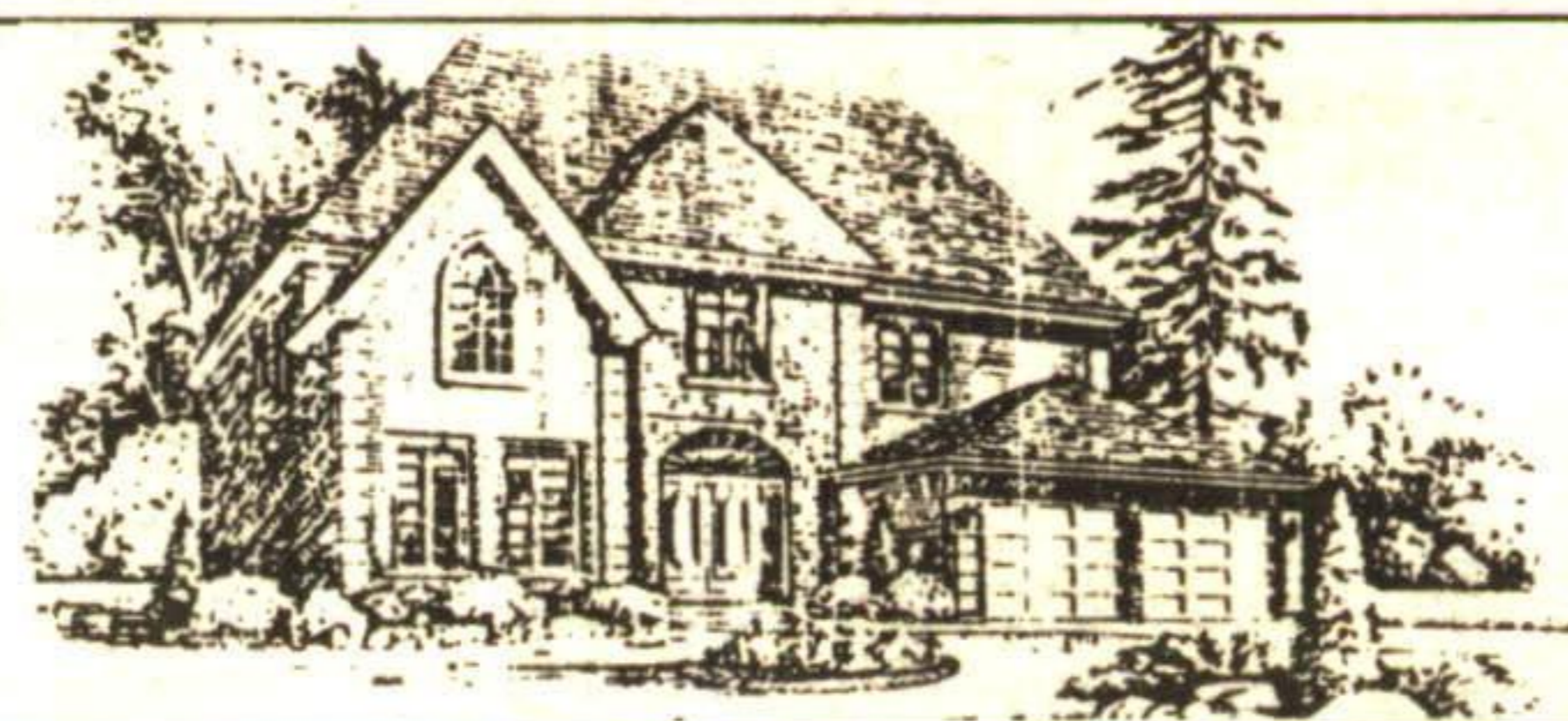


**NEW 1 SANDALWOOD DRIVE \$269,000**

**OPEN HOUSE**

**SUNDAY, FEBRUARY 13**  
 2-4 P.M.

Trafalgar Road North of Hwy. #7 to Ballinafad. Watch for signs and Bring Your Sweetheart!



**MAPLEVIEW ESTATES**

Models ranging from 1700 to 3450 sq. ft. 50' lots - FALL 1994 OCCUPANCY! Call Chris\* for further information on this exciting new development.  
 94-2-115



**CHRIS VALE\***  
 \*Sales Representative

"PERFORMANCE COUNTS"

**877-5165**

TOR. 874-3040

24 HR. PAGER

**ARTHUR F. JOHNSON & ASSOCIATES LIMITED REALTOR**