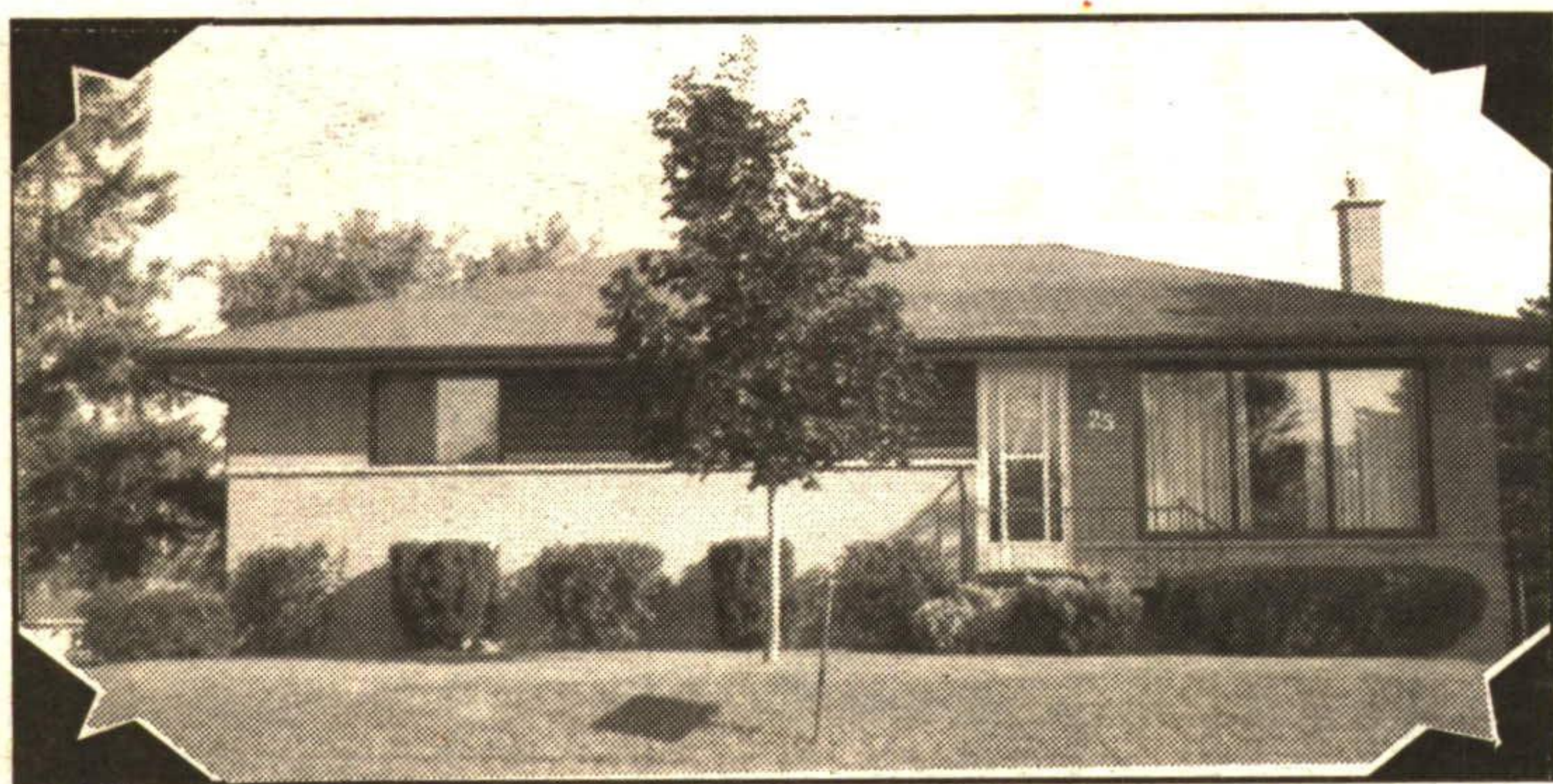




DONNA RAE

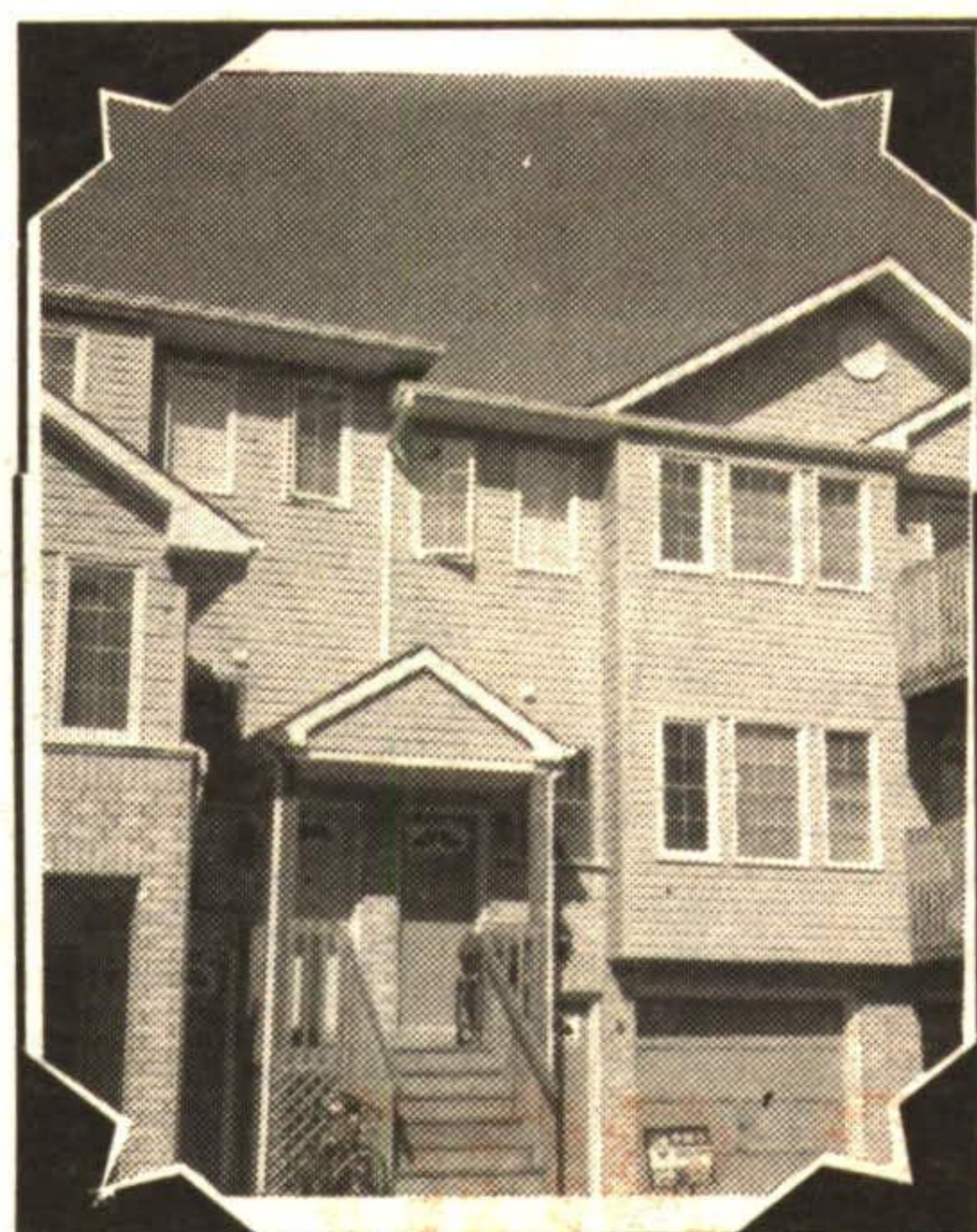
Sales Representative



IMMACULATE PLUS

3 bedroom bungalow, 4th bedroom down, 2 washrooms and new kitchen in sparkling oak. This home is a 10++ and well worth your look. This home will be gone soon so don't miss it. RM259-93

Call **DONNA RAE*** for details



CONDO DELIGHT

\$124,900. Great price, great layout and great time to buy. 3 bedrooms, 1 used as a family room, ground floor walk-in, single garage, patio walkout. Call for first time buyer advantage. RM239-93

Call **DONNA RAE*** for details



NEW - \$164,900

Gorgeous 3 bedroom bungalow. Immaculate throughout and elegant decor from the great colour choices to the finished basement boasting a gas burning fireplace. 2 washrooms, separate dining room and single car garage. RM013-94

Call **DONNA RAE*** for details



NEW - \$137,500

First time buyers delight. Hardwood floors, nice bright kitchen, large yard 65x168. Single detached garage. Quiet dead end street. Walk to schools and downtown. Have you been renting but want to own your own home. Call me for details, I can help. RM330-93

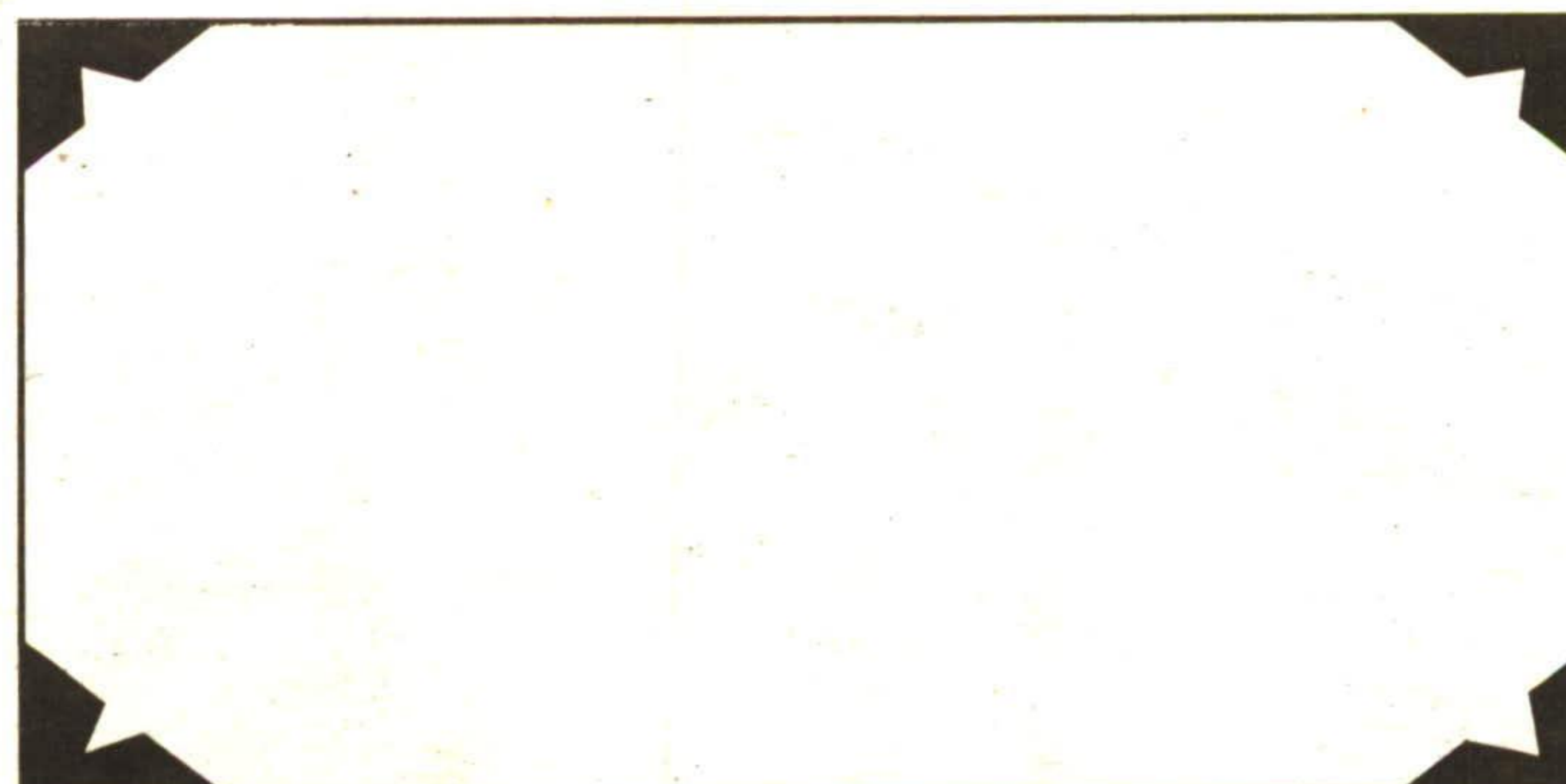
Call **DONNA RAE*** for details



POWER OF SALE

Call me and I will gladly show you this large 3 bedroom home. Nice broadloom, hardwood floors under it as well as well as throughout. Large kitchen and separate dining room. Fireplace in the living room. Under \$150,000. and won't last. RM150-93

Call **DONNA RAE*** for details



Call now to place your home in this space until **SOLD!**

RE/MAX

SUBURBAN (91) INC.

877-5211

24 HR PAGER

GREEN THUMB GARDENING



By **CHRISTINE COLE**

CLAY VS PLASTIC POTS

The selection and variety of pots available for indoor gardening is immense. However, the two most common pots or containers used today are clay and plastic. Clay pots have been in use long before plastics ever existed, and they are still the number one choice for most gardeners. Their extensive use has proven their merit to growing healthy plants. One of the most important reasons why clay pots are excellent for plants is their porosity - allowing air movement into the root zone. Since they are porous they hold some moisture within the pot itself. For this reason clay pots should always be soaked for a few hours in a sinkful for a few hours in a sinkful of water before transplanting plants into them. If not presoaked, the pots will soak up a lot a water from the soil, robbing the plants roots. Clay pots are heavy, but this can be an advantage in some respects. Top heavy and large plants are more stable in a clay pot. Clay pots work as excellent outdoor containers too! But, you must not leave them outdoors for the winter. They tend to crack, chip and/or flake once they've been frozen. Since they tend to cost more than most plastic containers it is worthwhile to protect them.

Compared to clay pots, plastic ones are lightweight and durable. They are much easier to wash and clean as well. Plastic pots are not porous, so they retain moisture and are therefore more appropriate for plants that require constant moisture. They usually have four or more drainage holes to increase their aeration and drainage. Plastic pots are limited in the sizes that are available. Clay pots are available in larger sizes.

Whichever type of pot you grow your plants in is a matter of personal preference, the type of plant you're growing and your watering habits. If you tend to overwater your plants, then clay pots would be more suitable.

Each week Christine Cole of Tuitman's Garden Centre and Landscaping, Highway 25, 1 mile south of Acton, 853-2480, will be presenting helpful tips and information to assist you in creating your garden show-place!

TUITMAN'S GARDEN CENTRE
ACTON
853-2480