

Royal LePage Real Estate Services Ltd., Realtor
170 Guelph St., Georgetown

ROYAL LEPAGE



In '94

You're sure to **SCORE**

If you work with a **CHAMP!**

For all your Real Estate needs **CALL**

Marilyn Champ, Sales Representative 877-0173

(Res:) 877-9625 (Tor:) 874-3068



MARILYN CHAMP
Sales Rep.

Royal LePage Real Estate Services Ltd., Realtor
170 Guelph St., Georgetown

ROYAL LEPAGE

877-0173

Tor. 874-3068

NEW



This townhouse has it all! Gas fireplace, central air, plus all the appliances. Many other upgrades including interior door to garage and it is an end unit also. Don't miss this one at \$134,900 - it won't last long. Susan Whitteker* 20-11



\$355,000

Space to entertain? Moving up? See this wonderful executive home with Betty McKend* 32-38



\$449,000

Generous space in this solid home on big lot - well located for commuting. Call Betty McKend* 32-31



BETTY MCKEND*



SUSAN WHITTEKER*

*Sales Representative

**I Joined
NRS Brand Realty Inc.**

**Because it's Good for My Clients . . .
Which Makes It Good For Me.**



MARION BROWN
Sales Representative

For quite some time, I've been looking for a Realtor who can offer me what I need. And what I need is an opportunity to service my clients better - giving them immediate access to the marketplace and good back up service. Now, after 14 years in Real Estate Sales, I've found it - at NRS Brand Realty. Through NATIONAL REAL ESTATE SERVICE, I can offer my customers professional service, whether they're moving

within the community or across the nation.

In addition to the local MLS system, NRS Brand Realty also provides:

1. A company-wide listing service (on-line computer network).
2. A NATIONAL Catalog of Homes.
3. International market exposure.

Find out more about The National Advantage by calling Marion at 873-0300.

NRS Brand Realty Inc.



NRS BRAND REALTY Inc.

45 Mountainview Rd. N.
Georgetown, Ontario L7G 4J7
(905) 873-0300

CONNECT



CAROLE MACLEOD*

JOHNSTON & DANIEL

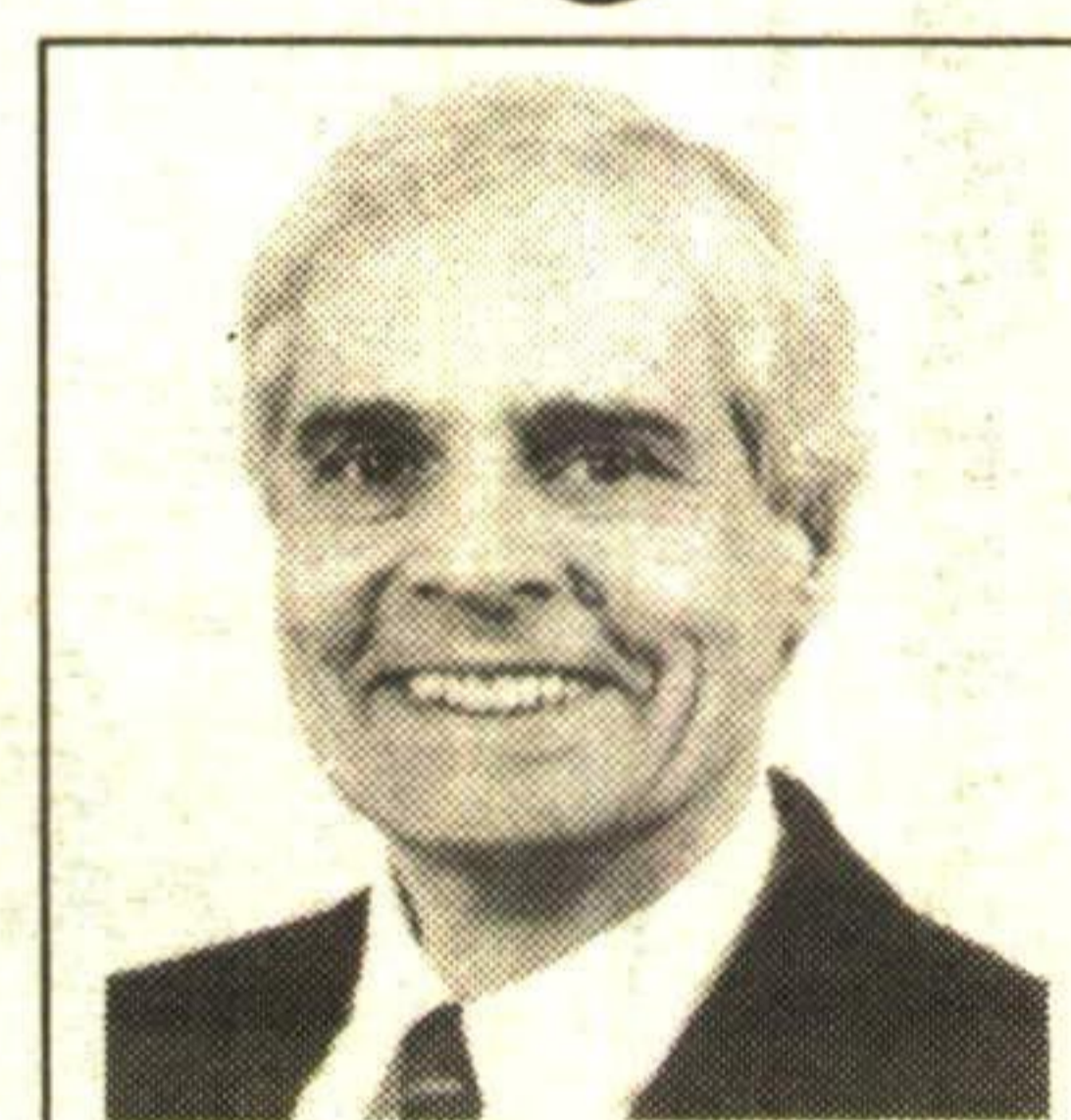
JOHNSTON & DANIEL LIMITED REALTOR

The Right Connection

*Sales Representative

Our office, well located in the Village of Cheltenham is only minutes from Georgetown. This setting allows us to serve you better from its vantage point to commuting routes & the various towns & villages that make our town & country community so special. Whether you are a first time buyer, a retiree, planning to build, moving up or scaling down, we can offer our expertise, knowledge & time to help you realize your goal. Call today.

CONNECTED



MALCOLM MACLEOD*



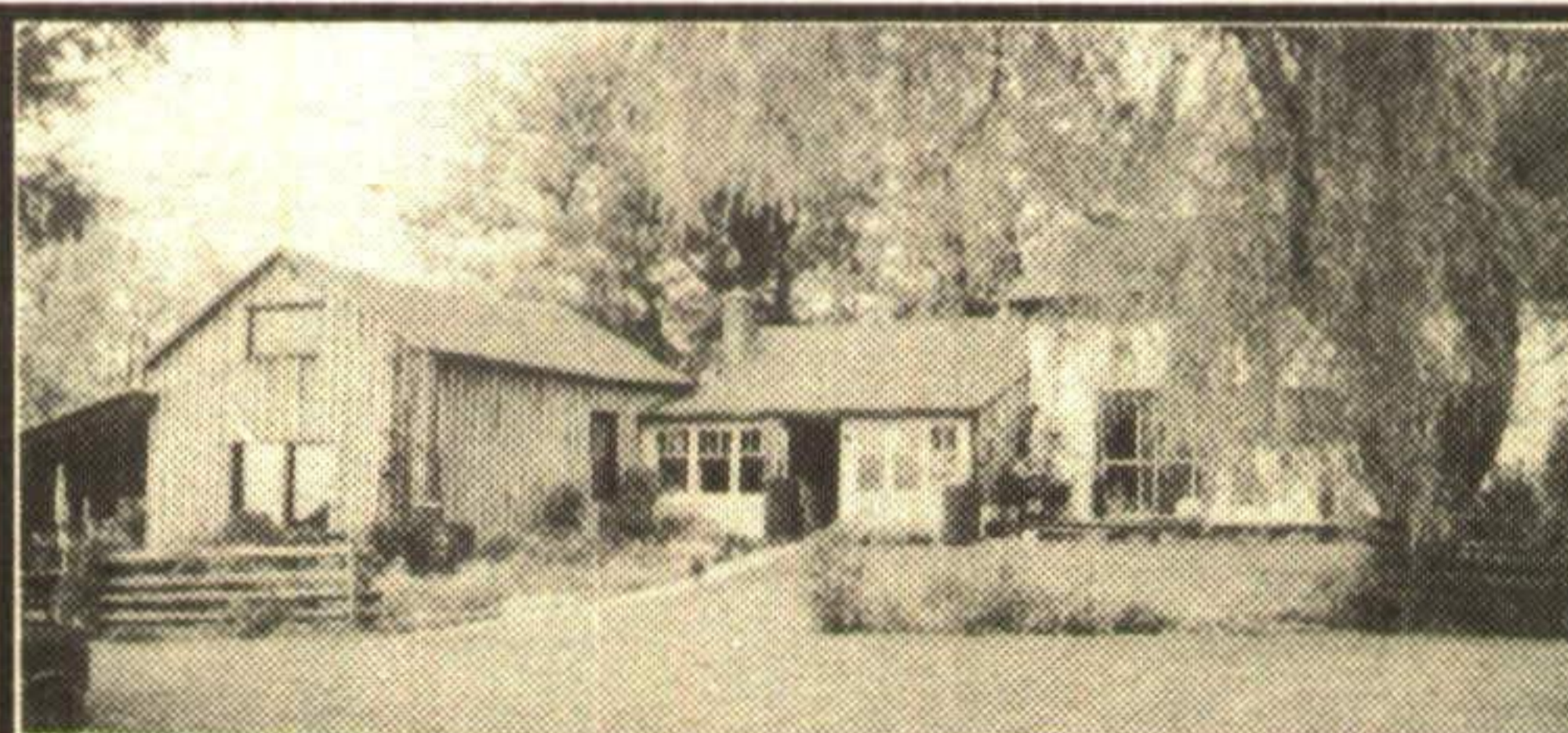
**SKATE ON YOUR POND
SKI ON YOUR OWN TRAILS**

Enjoy the ambience of this magnificent 4 bedroom stone home & Coach House on 41 acres. Offered at \$850,000. Phone Carole MacLeod* JD93-083



**LONG VIEWS OVER
ROLLING 96 ACRES**

Renovated 3 bedroom farm house. Large bank barn. Two ponds, Wood lot. A special offering at \$375,000. Phone Carole MacLeod* JD93-118



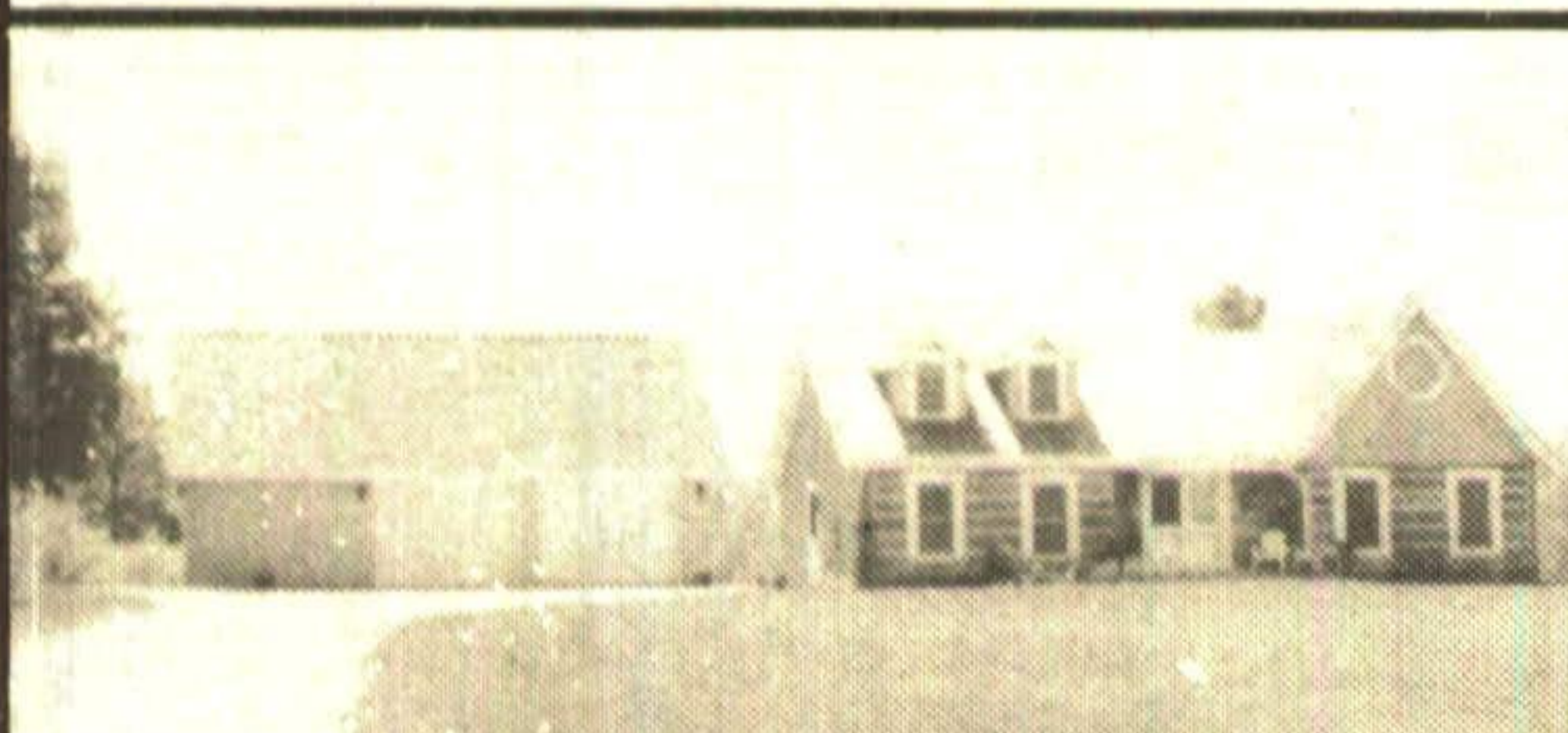
CALEDON COUNTRY - 97 ACRES

Cosy 1800's farm house. Outbuildings. Enjoy the best of life growing your own food & raising your own animals. A treasure. Asking only \$438,000. Call Malcolm MacLeod* JD93-113



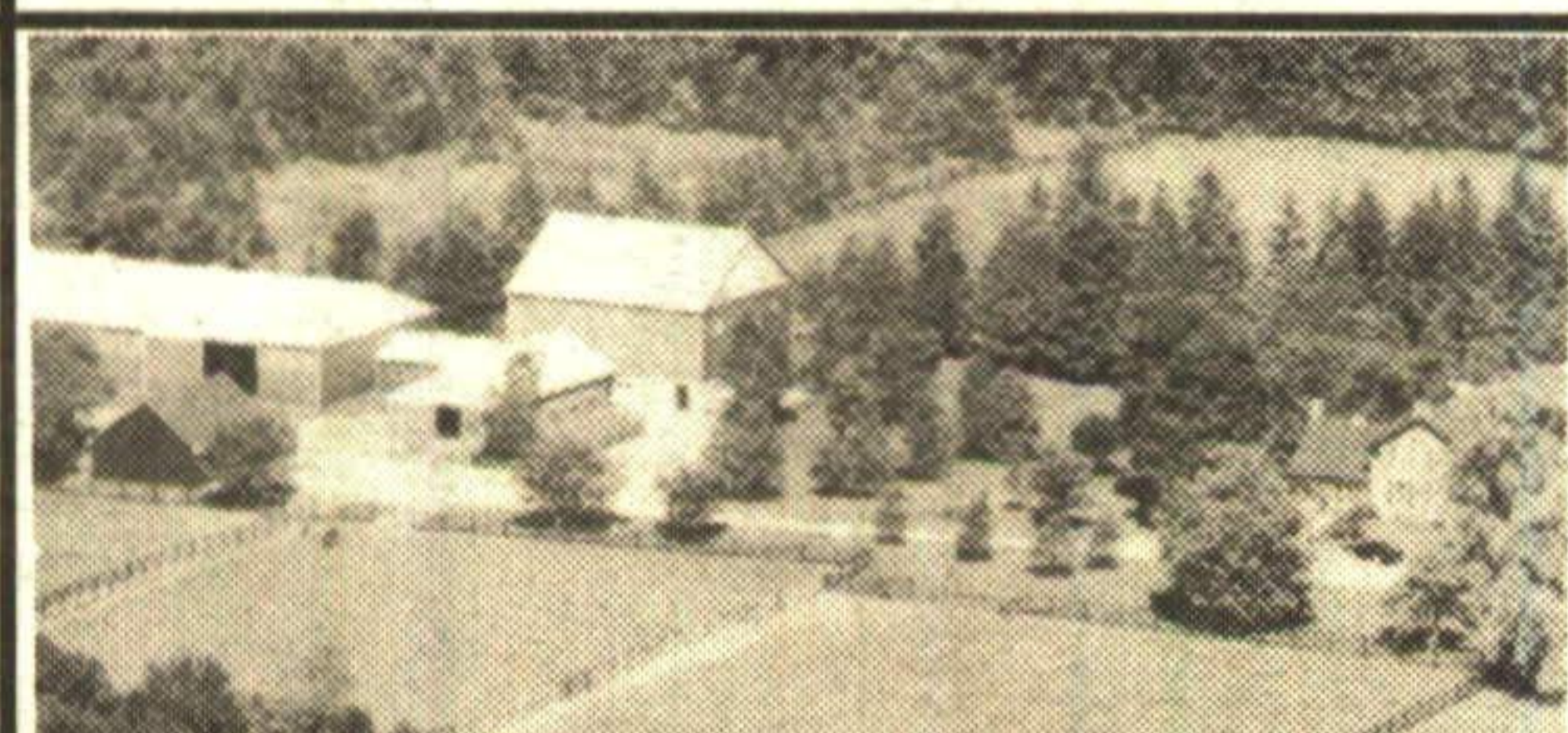
FORKS OF CREDIT

Perfect for retreat or permanent home. 2.6 acres. Charming 4 bedroom filled with English country character. Discover by appointment with Carole MacLeod* JD93-069



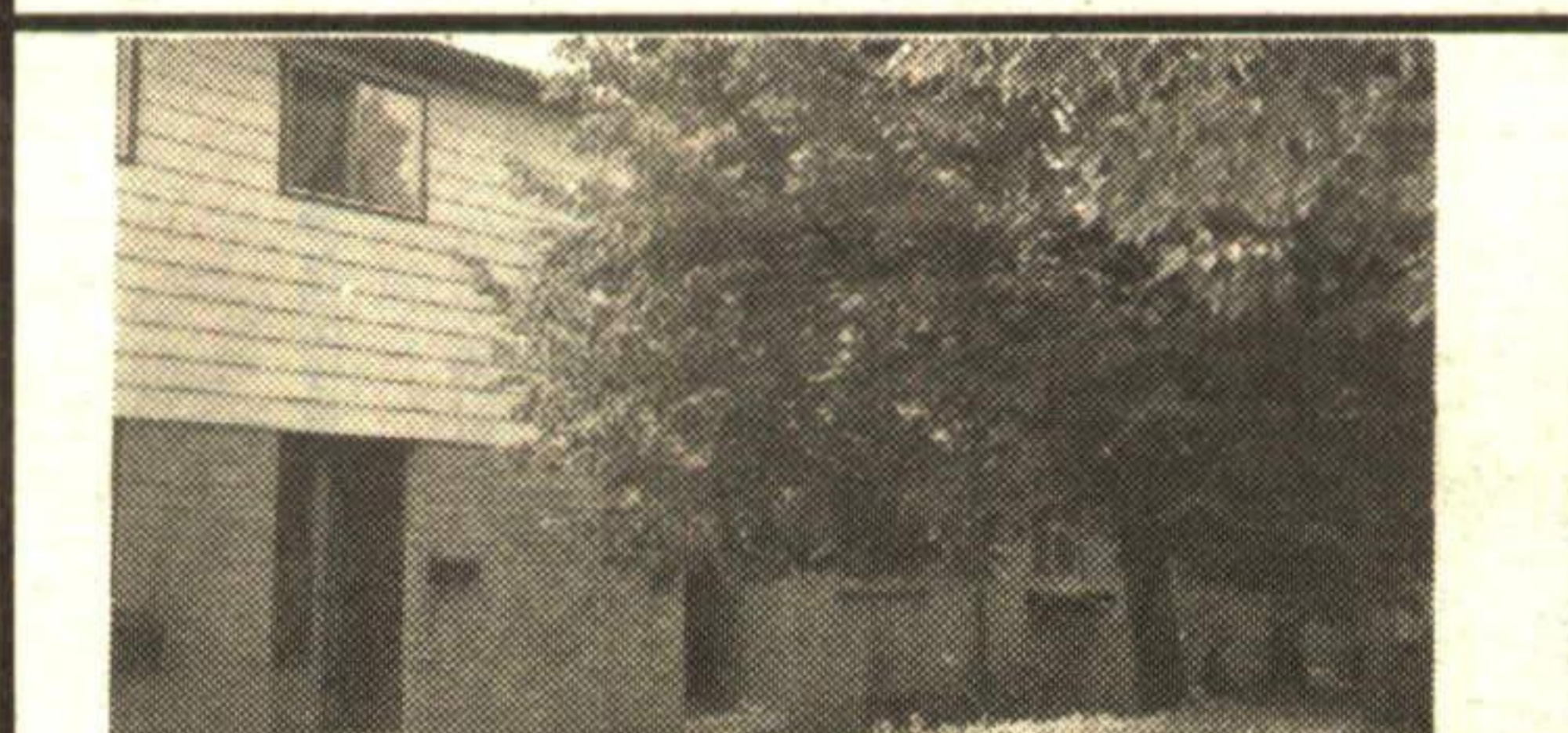
LIVE & WORK FROM HOME

Sited high on a hill overlooking golf course, 4-1/2 acres, pond, log house, separate offices. Country living at its best. Offered at \$375,000. Phone Carole MacLeod* JD93-072



LUXURY HORSE FARM

1866 stone home, 19 stall barn, 60' x 120' arena, close to Terra Cotta. Fenced fields, rolling terrains, wood lot. A good investment opportunity at \$795,000. Phone Carole MacLeod* JD-078



IDEAL STARTER HOME

Well located within easy walking distance of "GO" transit. Walkout to private yard. Perfect for first time buyers or retirees. Asking \$121,900. Bring an offer. Malcolm MacLeod* JD93-080



NEW

CEDAR POST & BEAM COUNTRY HOME

Set back on 2.8 acre woodlot. Large windows & walkouts to decks and balcony's. Excellent Limehouse location. Offered at \$297,000. Carole* & Malcolm* MacLeod. JD94-02

14396 CREDITVIEW ROAD, CHELTENHAM, ONTARIO L0P 1C0 TELEPHONE (905) 838-3830 (CALEDON) 874-3086 (TORONTO LINE)