

# IT'S THE EXPERIENCE

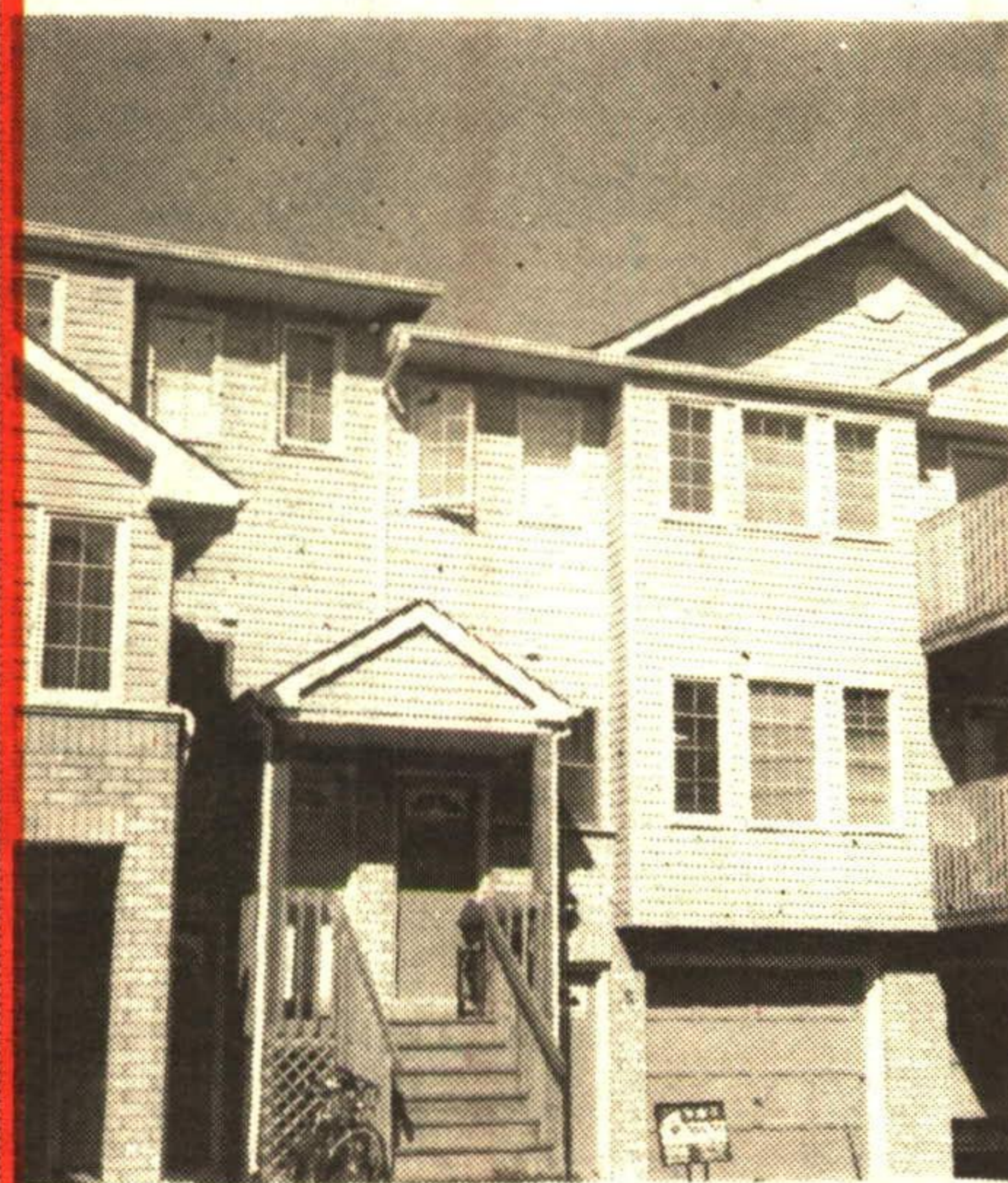


## CHRISTMAS TRADITION

could be started in this immaculate and upgraded 3 bedroom bungalow. \$162,000. Huge lot. Quiet crescent. New kitchen. Superb colour choices throughout.

RM259-93

Call **DONNA RAE\*** for details



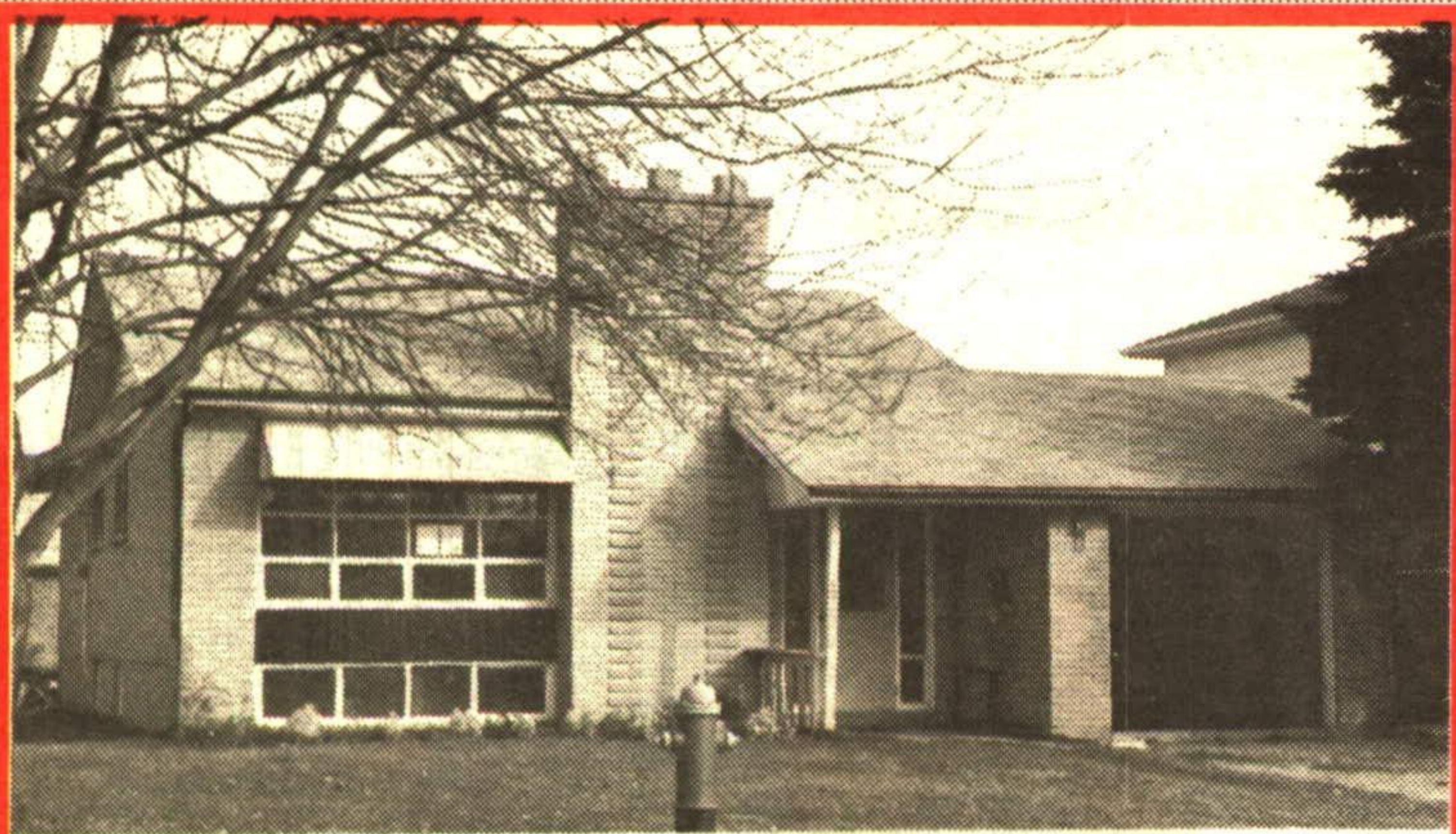
## REDUCED \$124,900

and worth your time to take a look. Gorgeous 1,200 sq. ft. condo in Georgetown. Single garage. Great first time buyer home, 3 bedrooms and plenty more.

RM239-93

Call

**DONNA RAE\*** for details

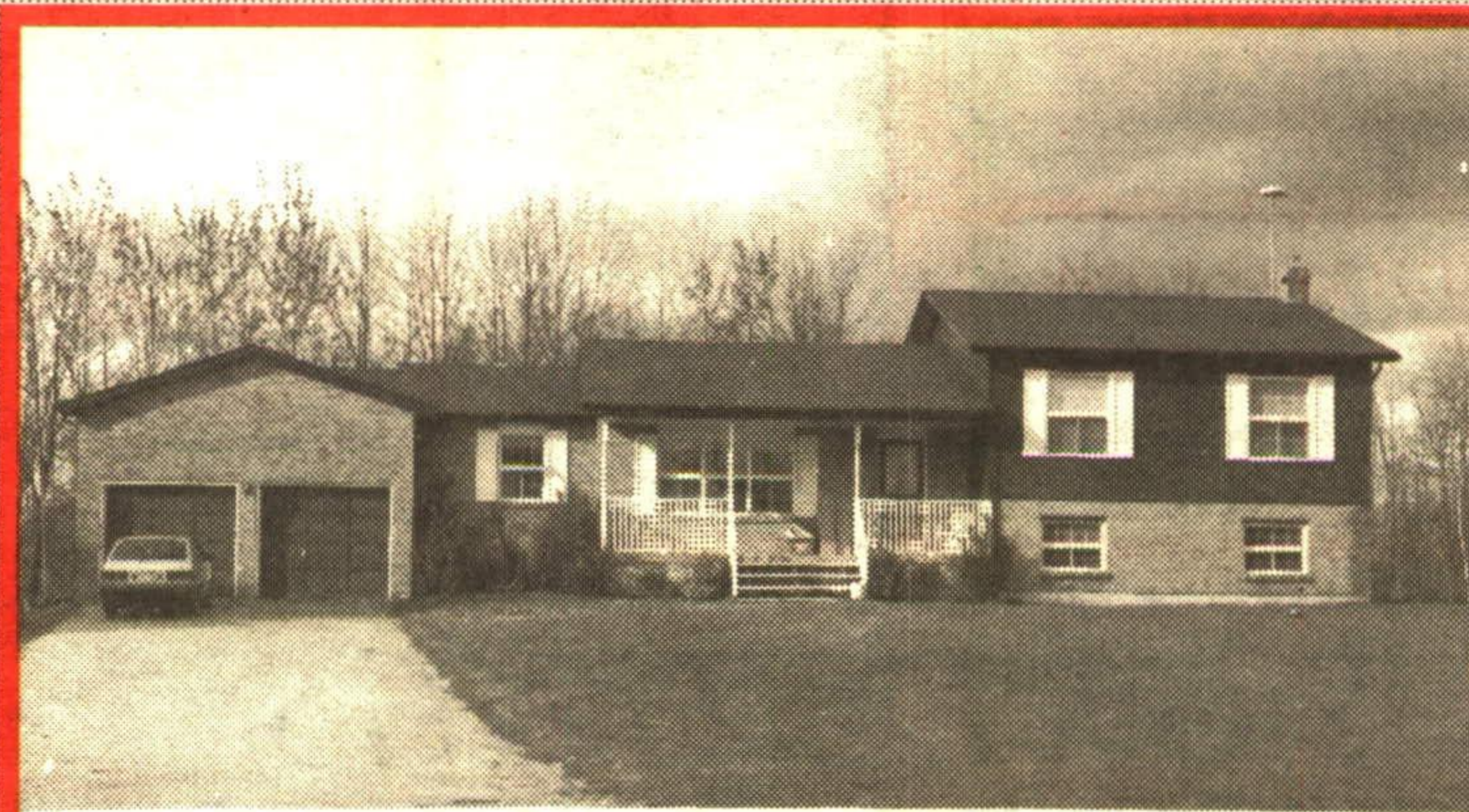


## OWN THIS POWER OF SALE BY CHRISTMAS

\$149,500. Large bungalow, 3 large bedrooms. Single garage, fireplace. Eat-in kitchen, large entrance. Call now before it's too late.

RM150-93

Call **DONNA RAE\*** for details



## WINTER WONDERLAND

Country location in Estate subdivision. 2+ acres. Fantastic floor plan, separate formal dining room, French doors, ceramics and cozy fireplace in family room, main floor laundry, 3 washrooms and plenty more. Call quickly.

RM283-93

Call **DONNA RAE\*** for details

## GREEN THUMB GARDENING



### By CHRISTINE COLE POINSETTIAS THE KING OF CHRISTMAS PLANTS

Since 1830 the Poinsettia plant has developed from a wild plant of Mexico to the best known Christmas plant. Their bright red and green color has made them favorites for Christmas. However, the red color is not the flower. The poinsettia flowers are actually the small, insignificant yellow pod structures. The red color are modified leaves called bracts. Pink and white varieties are now available as well. If you receive or purchase a poinsettia plant that gets chilled (such as when taking to and from your car), it will suddenly wilt when brought into a warm house. However, it can usually be revived by watering it with hot water.

The most effective way to prolong the color in the bracts is to set the plant in a location where it receives plenty of light and a constant room temperature. Once the color has faded move the plant to a cool, dark area.

In May cut the stems back and place the plant in a flower bed to grow for the summer.

To have the plant in full color for Christmas again, the amount of light it receives must be regulated. Early in October the plant must have 12 to 14 hours of complete darkness each day. Placing a box over it to putting in a closet are easy ways to accomplish this. Unfortunately, if you fail to do this daily the bracts may not change color properly.

Poinsettias are a colorful and challenging Christmas plant, but with minimum of care they can become a year round plant to grow and enjoy.

Each week Christine Cole of Tuitman's Garden Centre and Landscaping, Highway 25, 1 mile south of Acton, 853-2480, will be presenting helpful tips and information to assist you in creating your garden show-place!

# DONNA RAE, Sales Representative\*



TOR. 874-3051  
ERIN (519) 833-7117  
**877-5211**

**TUITMAN'S  
GARDEN CENTRE**

ACTON  
**853-2480**