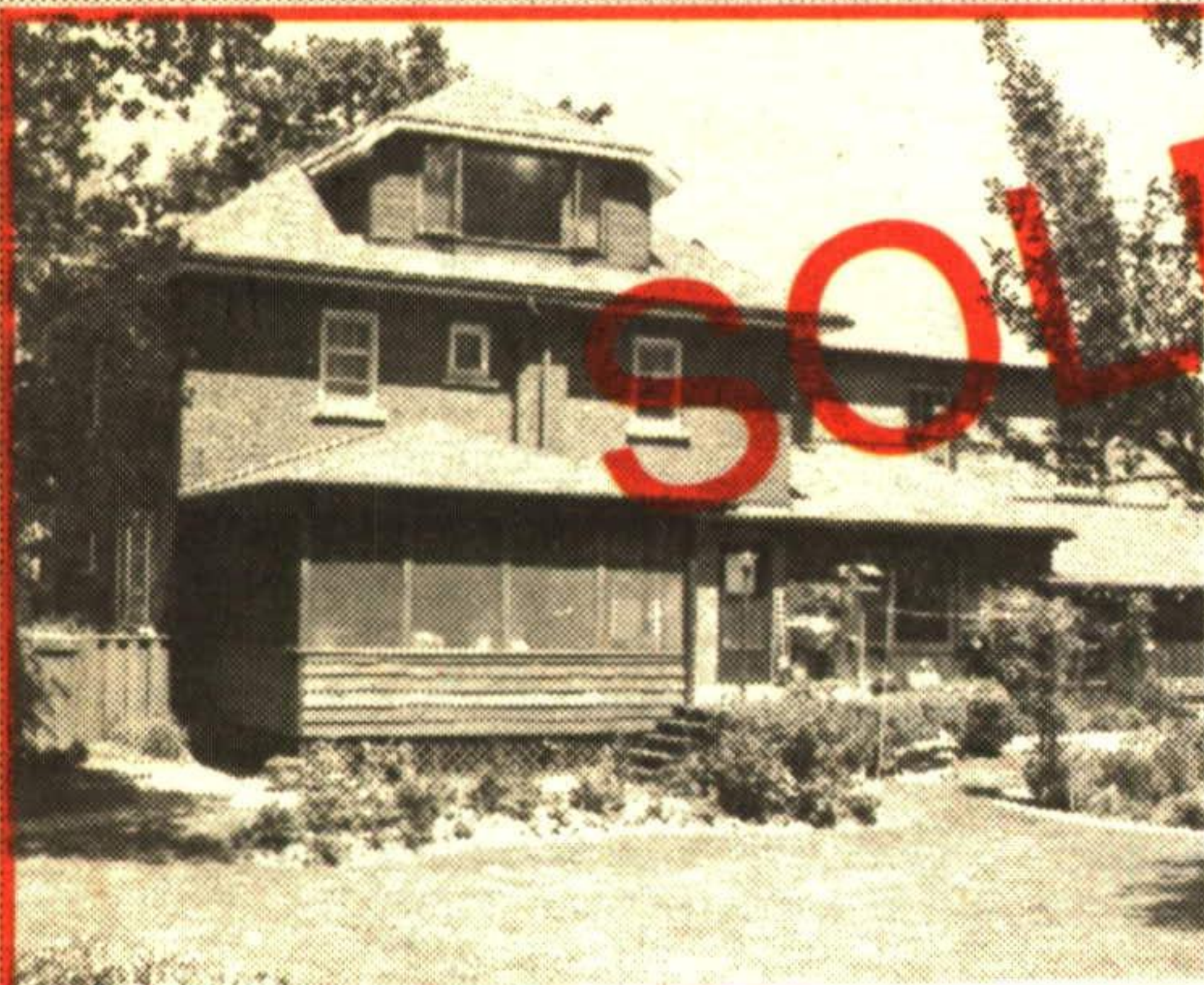




IT'S THE EXPERIENCE



A TOUCH OF HISTORY

This immaculate home boasts charm. Main floor family room, all wood floors, original trim, stunning decor, gorgeous front enclosed porch and screened in back porch. Better Homes and Gardens style backyard boasting 2 perennial gardens, fruit trees and a fish pond and an attached 3 storey shop that was once a Blacksmith Shop. RM 152-93

Donna Rae*
877-5211



\$238,000

Manicured 1/2 acre. Sunken living room highlighted with posh carpet and fireplace, Massive family room boasting pine floors, large master with ensuite, private deck and country charm. RM174-93

Donna Rae* 877-5211



NEW

BETWEEN MILTON & GEORGETOWN

Is this immaculate 3+ bedroom bungalow. Country acre boasting its own pond. Always wanted country living but seconds to 401 and Steeles. Well worth the call. RM272-95

Donna Rae* 877-5211

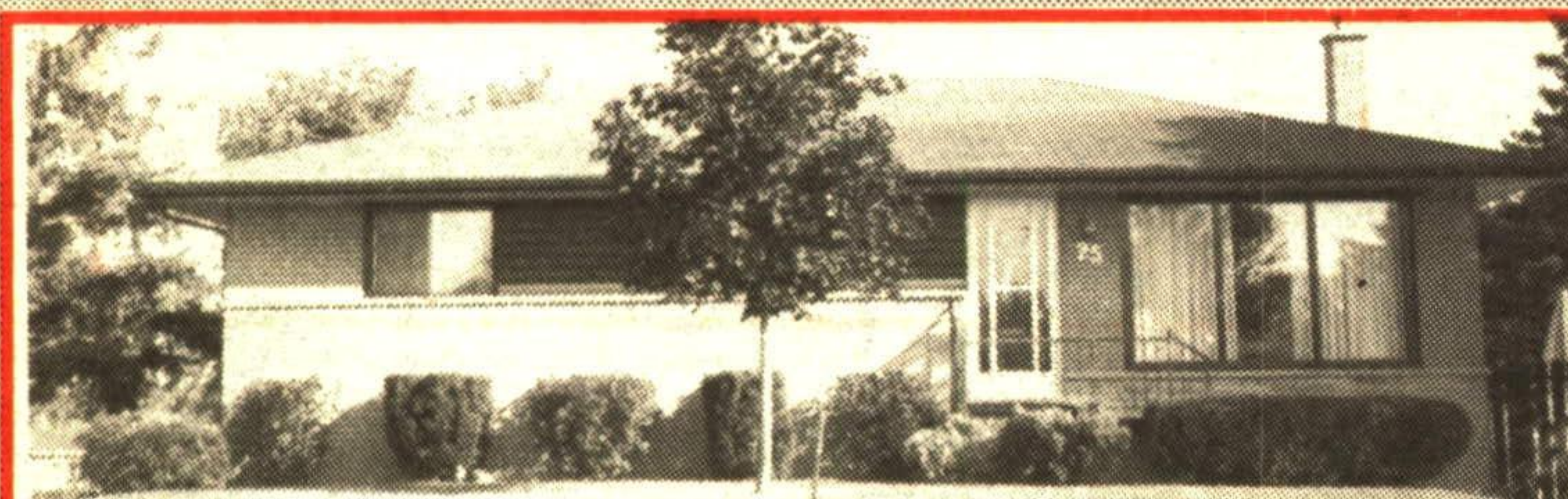


NEW

ESTATE SALE

3 bedroom bungalow, living room, dining room, eat-in kitchen. Rec rm and professional photographers darkroom. Fenced yard. Plaza location. \$159,900. RM274-93

Donna Rae* 877-5211



GORGEOUS

In Georgetown is this gorgeous 3 bedroom bungalow boasting a brand new kitchen, neutral carpet choices great for decorating. Hardwood floors. The basement has a 2nd kitchen, 2nd bathroom and living area and back entrance to an interlocking patio. Totally fenced for pets and kids. For a viewing of this fantastic new listing call RM259-93

Donna Rae* 877-5211



\$99,900

\$99,900

This immaculate 3 bedroom condominium is located on a quiet inside court. Walkout patio off the dining room to the fenced yard. Perfect for pets and kids. As a first time buyer you qualify for only 5% down with terms of the length your choice. Call quickly on this 2 storey condo for additional details. RM258-93

Donna Rae*
877-5211



COUNTRY SPECTACULAR

4 bedrooms, ensuite off master. Extra large country kitchen with patio walkout. Ceramics throughout. Large formal dining room boasting hardwood floors. 2.27 acres (some wooded). Hot tub and sauna. Satellite dish. Massive family room and fireplace. Executive neighbourhood. \$259,900. Won't last long. RM283-93

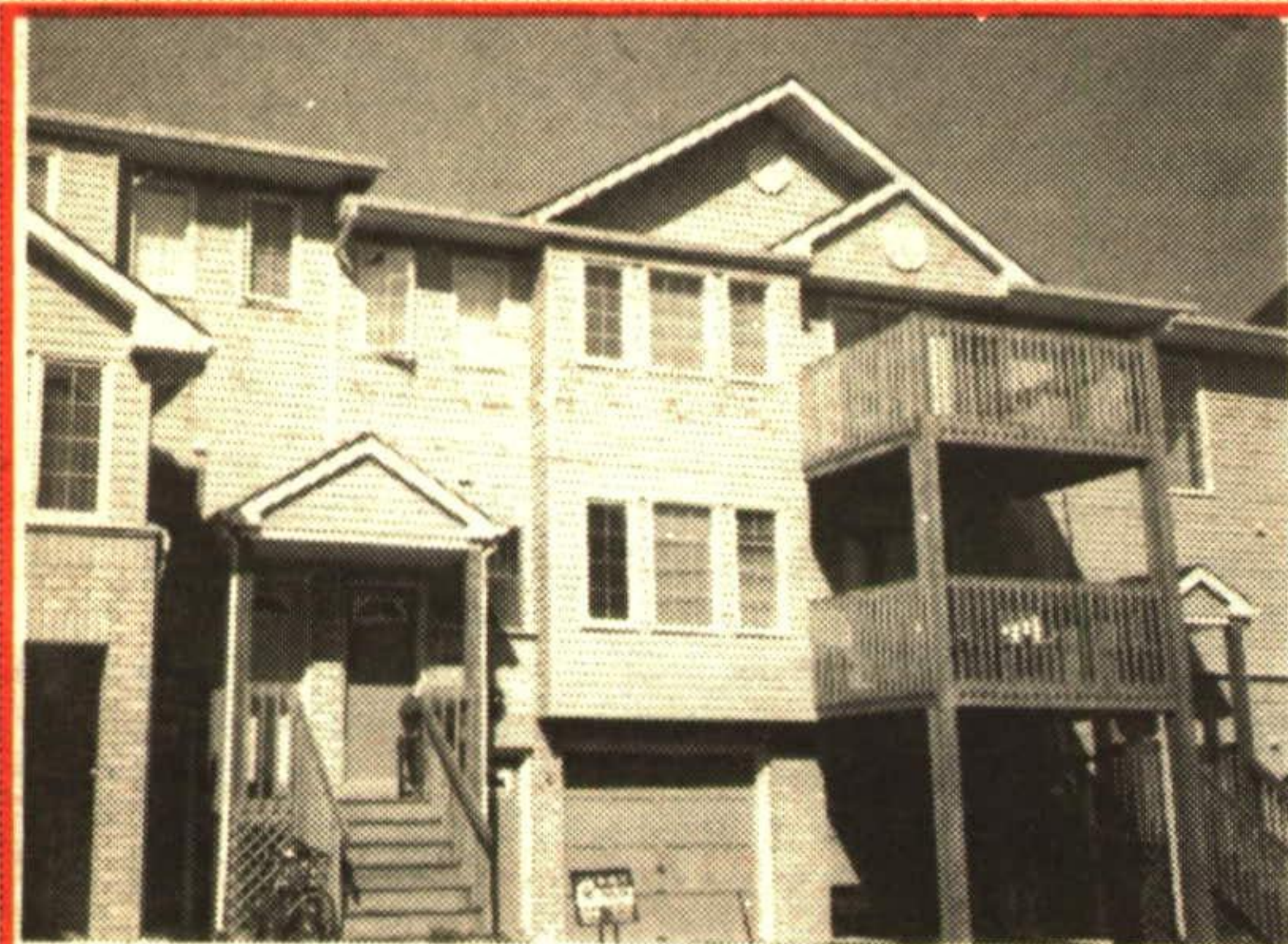
Donna Rae* 877-5211



GOING, GOING...

1 acre of tranquility and peace. Gorgeous 3 bedroom bungalow, large bright kitchen and formal dining room. Outskirts of Georgetown. RM 253-92

Donna Rae* 877-5211



GORGEOUS CONDO

A modified Chartwell, 1220 sq. ft., 3 bedrooms. Vendor presently uses 1 bedroom as a family rm. Ground level. Great for groceries and young kids. Garage and driveway also an added touch. \$129,900. As first time buyers you may qualify for 5% down. RM239-93

Donna Rae*
877-5211



POWER OF SALE

Call on this 3 bedroom bungalow NOW. Stone fireplace, fenced yard, eat-in kitchen. Possible in-law, single garage. Quiet street. RM150-93

Call and ask for **DONNA RAE* 877-5211**

DONNA RAE, Sales Representative*



RE/MAX

TOR. 874-3051
ERIN (519) 833-7117
877-5211
24 HR. PAGER

GREEN THUMB GARDENING



By CHRISTINE COLE CORKSCREW HAZEL

At this stage of the season most deciduous shrubs and trees have shed their foliage and will remain this way until the spring. During this time these plants are lacking most of their visual appeal. Their leafless state can be very stark and lifeless, but the reverse is true of the corkscrew hazel it is most attractive in fall and winter.

Its beauty is found in its unusual branches which are revealed when its leaves drop. As you may expect from its name, the branches grow with a twisting and curling fashion similar to a corkscrew. This characteristic also makes an interesting ingredient in floral arrangements.

The corkscrew hazel poses few problems to cultivate. It adapts to most soil conditions but performs best in well-drained and fertile soil with a full sun exposure. And it usually attains a height of nine to 10 feet at maturity. Although its flower is not showy, its leaves are also twisted, producing a limp appearance throughout the growing season.

The bare gnarled and twisted branches of the corkscrew hazel in silhouette are very attractive and a most unusual sight during the fall and winter.

Each week Christine Cole of Tuitman's Garden Centre and Landscaping, Highway 25, 1 mile south of Acton, 853-2480, will be presenting helpful tips and information to assist you in creating your garden show-place!

**TUITMAN'S
GARDEN CENTRE**
ACTON
853-2480