

GREEN THUMB GARDENING



By **CHRISTINE COLE HIBISCUS**

The Hibiscus is a well-known and grown houseplant and is frequently referred to as the China Rose. In its natural habitat where they grow outdoors all year long, are used as ornamental shrubs and hedging. However, in this part of the world, this plant must be grown as a houseplant. Its large, exotic flowers are the Hibiscus' main attraction. Plants are available with single and double flowers in colors ranging from white, pink, orange to red. Unfortunately, the flowers only bloom for a day and then fall off the plant. But, the plants produces so many flowers that this aspect is hardly noticed.

This houseplant requires no special treatment to bring it into bloom except to maintain it in a healthy state. But, there can be a great disappointment when it doesn't bloom during its normal flowering season from early spring to late fall. Sometimes the flower buds develop but drop off before the flower opens. This can be prevented or corrected by increasing the humidity around the plant. If new leaves develop on the Hibiscus but the flower buds fail to appear then the plant needs fertilizing. Use one developed for flowering plants. To grow healthy, vigorous plants provide them with medium to high light and an adequate supply of water and nutrients (fertilizer). When actively growing the Hibiscus can use a large quantity of water. It can quickly wilt, an indication that it isn't being watered enough. You can expect a Hibiscus to double in size in one season. If required, transplant in spring just before active growth begins. However, they do tend to flower more profusely when slightly potbound.

Each week Christine Cole of Tuitman's Garden Centre and Landscaping, Highway 25, 1 mile south of Acton, 853-2480, will be presenting helpful tips and information to assist you in creating your garden showcase!

TUITMAN'S GARDEN CENTRE
ACTON
853-2480



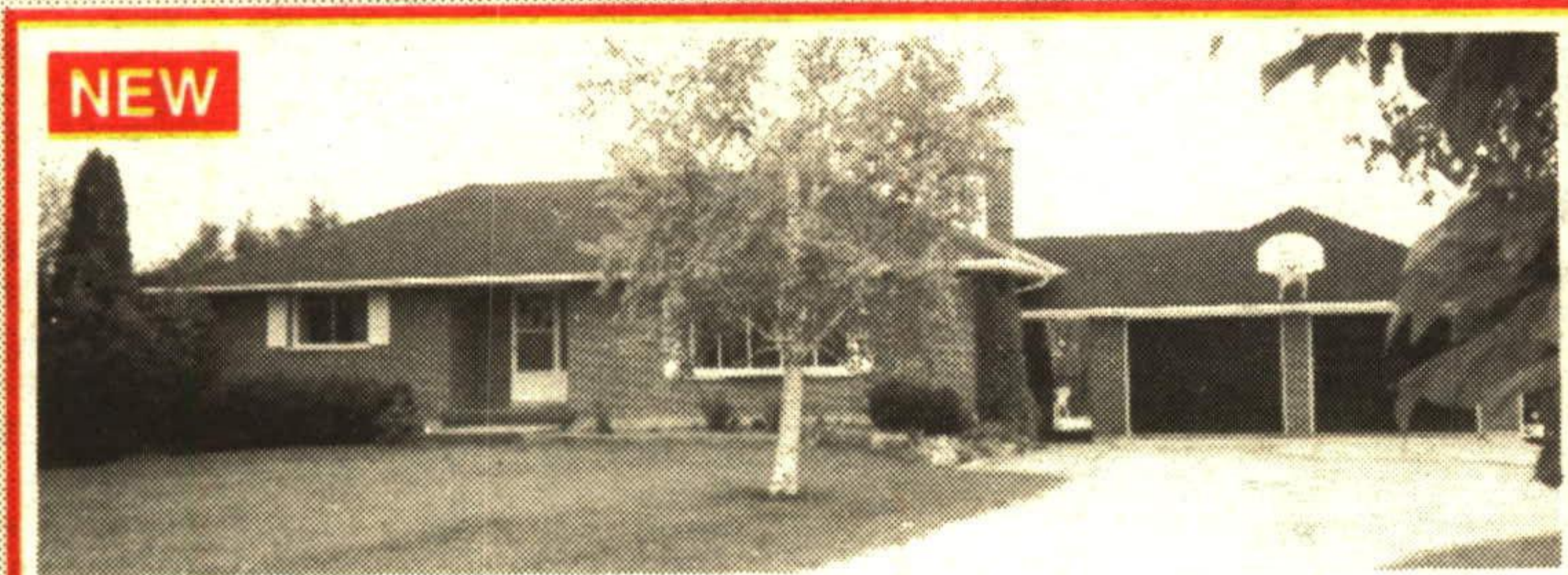
IT'S THE EXPERIENCE



A TOUCH OF HISTORY

This immaculate home boasts charm. Main floor family room, all wood floors, original trim, stunning decor, gorgeous front enclosed porch and screened in back porch. Better Homes and Gardens style backyard boasting 2 perennial gardens, fruit trees and a fish pond and an attached 3 storey shop that was once a Blacksmith Shop. RM 152-93

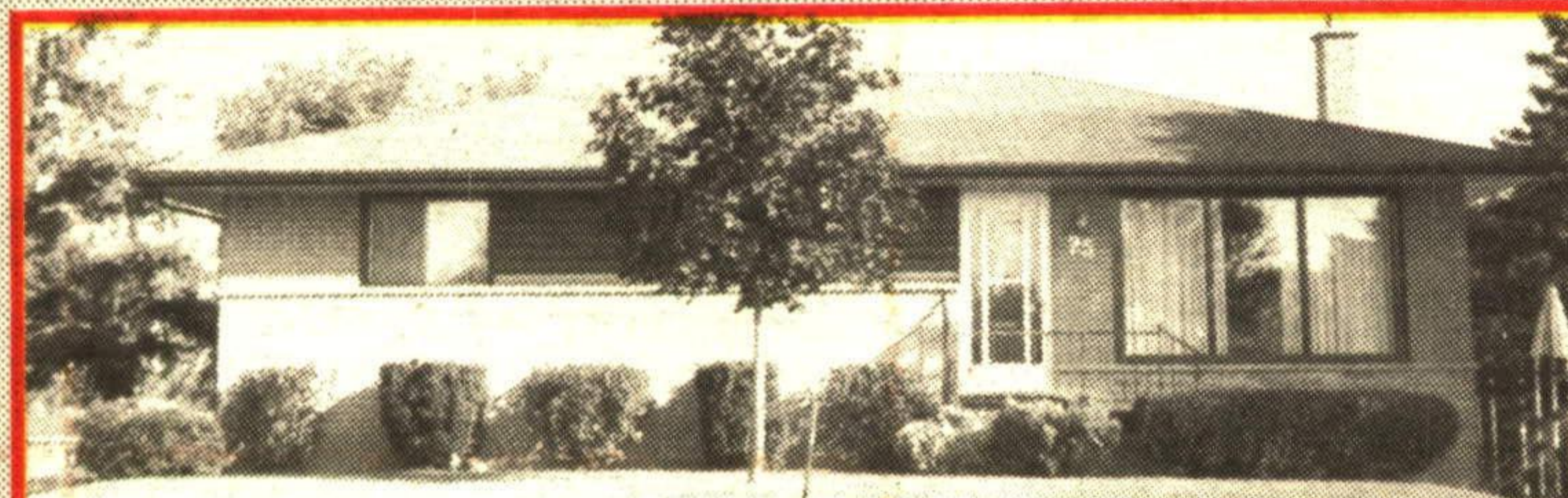
Donna Rae* 877-5211



BETWEEN MILTON & GEORGETOWN

Is this immaculate 3+ bedroom bungalow. Country acre boasting its own pond. Always wanted country living but seconds to 401 and Steeles. Well worth the call. RM272-95

Donna Rae* 877-5211



GORGEOUS

In Georgetown is this gorgeous 3 bedroom bungalow boasting a brand new kitchen, neutral carpet choices great for decorating. Hardwood floors. The basement has a 2nd kitchen, 2nd bathroom and living area and back entrance to an interlocking patio. Totally fenced for pets and kids. For a viewing of this fantastic new listing call RM259-93

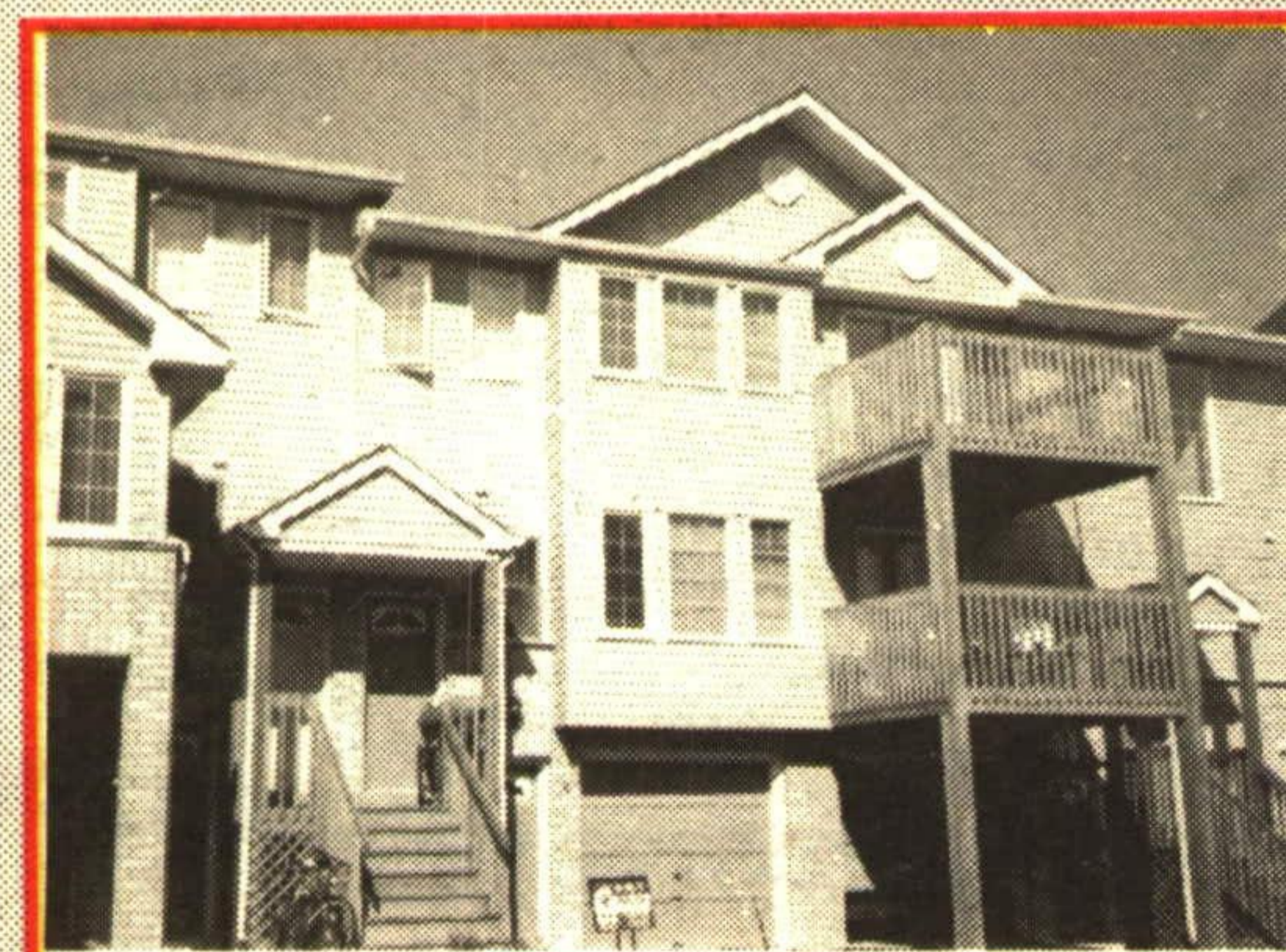
Donna Rae* 877-5211



COUNTRY SPECTACULAR

4 bedrooms, ensuite off master. Extra large country kitchen with patio walkout. Ceramics throughout. Large formal dining room boasting hardwood floors. 2.27 acres (some wooded). Hot tub and sauna. Satellite dish. Massive family room and fireplace. Executive neighbourhood. \$259,900. Won't last long. RM283-93

Donna Rae* 877-5211



GORGEOUS CONDO

A modified Chartwell, 1220 sq. ft., 3 bedrooms. Vendor presently uses 1 bedroom as a family rm. Ground level. Great for groceries and young kids. Garage and driveway also an added touch. \$129,900. As first time buyers you may qualify for 5% down. RM239-93

Donna Rae* 877-5211



\$238,000

Manicured 1/2 acre. Sunken living room highlighted with posh carpet and fireplace, Massive family room boasting pine floors, large master with ensuite, private deck and country charm. RM174-93

Donna Rae* 877-5211



ESTATE SALE

3 bedroom bungalow, living room, dining room, eat-in kitchen. Rec rm and professional photographers darkroom. Fenced yard. Plaza location. \$159,900. RM274-93

Donna Rae* 877-5211



\$99,900

\$99,900

This immaculate 3 bedroom condominium is located on a quiet inside court. Walkout patio off the dining room to the fenced yard. Perfect for pets and kids. As a first time buyer you qualify for only 5% down with terms of the length your choice. Call quickly on this 2 storey condo for additional details. RM258-93

Donna Rae* 877-5211



GOING, GOING...

1 acre of tranquility and peace. Gorgeous 3 bedroom bungalow, large bright kitchen and formal dining room. Outskirts of Georgetown. RM 253-92

Donna Rae* 877-5211



MILTON COUNTRY

With over 2 acres. Fantastic home boasting main floor family room, laundry room and den. The decor boasts ceramics, blues and greys as a colour scheme and plush elegance. Come view this 10+++ 4 bedroom home. And what about this 3 car garage. RM 164-93

Donna Rae* 877-5211

DONNA RAE, Sales Representative*



RE/MAX

TOR. 874-3051
ERIN (519) 833-7117
877-5211
24 HR. PAGER