

**The Sacré - Coeur Parish,  
39 Guelph St.  
La Paroisse Sacré Coeur,  
39 Guelph St.**

would like to extend their thanks to all the businesses and merchants that supported us on our October 16, 1993 Bazaar, sorry if we have missed you on this list.

Voudrait remercier les entreprises et marchands qui ont contribués a notre bazaar le 16 Octobre 1993. Nous esperons ne pas vous avoir oublié sur cette liste.

**Thank you very much!! Merci Beaucoup!!**

**SPONSOR'S FOR BAZAAR 1993**

- |                         |                          |
|-------------------------|--------------------------|
| Work World              | Goodlet's                |
| K-Mart                  | Pizza Delight            |
| Countrywide All-Pro     | Federated Foods          |
| Home Hardware           | Tim Horton's             |
| Island Steel Erector    | Terra Cotta Cookies      |
| Zellers                 | Delrex Smoke Shop        |
| Gil Auto (Brampton)     | Hallmark                 |
| Georgetown Deli         | John Vince               |
| Water Garden Craft      | Meadowglen               |
| Kentner Catering        | Color Your World         |
| Raymond Steel (Milton)  | Food Stuff               |
| Northern Getaway        | Brilliant Gold           |
| Party Platters          | Dominion Seed House      |
| McCall Men's Wear       | Halton Camera            |
| Northern Telecom        | Child Scope              |
| J.V. Clothing           | R. Boucher Aluminum      |
| Country Craft           | Vanderburgh Flowers      |
| Craig Photo             | Firestone                |
| Fire & Ice              | Mac's Milk               |
| Butcher Shop            | Bee Line Travel          |
| Raves Hair Fashion      | Fendley Florists         |
| Trio Mart               | Deep Sea Fish & Chips    |
| Brew Factory            | Core & Cask              |
| Acklands Ltd.           | Burger King              |
| Sheridan Nurseries      | Rosco                    |
| Connoisseurs Court      | Preston Lucky Dollar     |
| The Newfie Store        | Norval Convenience Store |
| Living Lighting         | Belamy's                 |
| Loblaws                 | Allison Farm             |
| Howell Plumbing         | Independent Newspaper    |
| Young's Pharmacy        | Georgetown Rent-All      |
| Georgetown Fruit Market | Haltel                   |
| A & P Store             | G & S Television         |
| C & S Printing          | Pizza Hut                |
| M & M Pro Sport         |                          |

MARVYN MORGAN



Associate Broker  
ACTON: 853-2086



**REMAX BLUE SPRINGS REALTY**

(Halton Corp)

- \* MEMBER OF 2 REAL ESTATE BOARDS
- \* Always Home-Job Loss Mortgage Insurance

GEORGETOWN: 873-4937

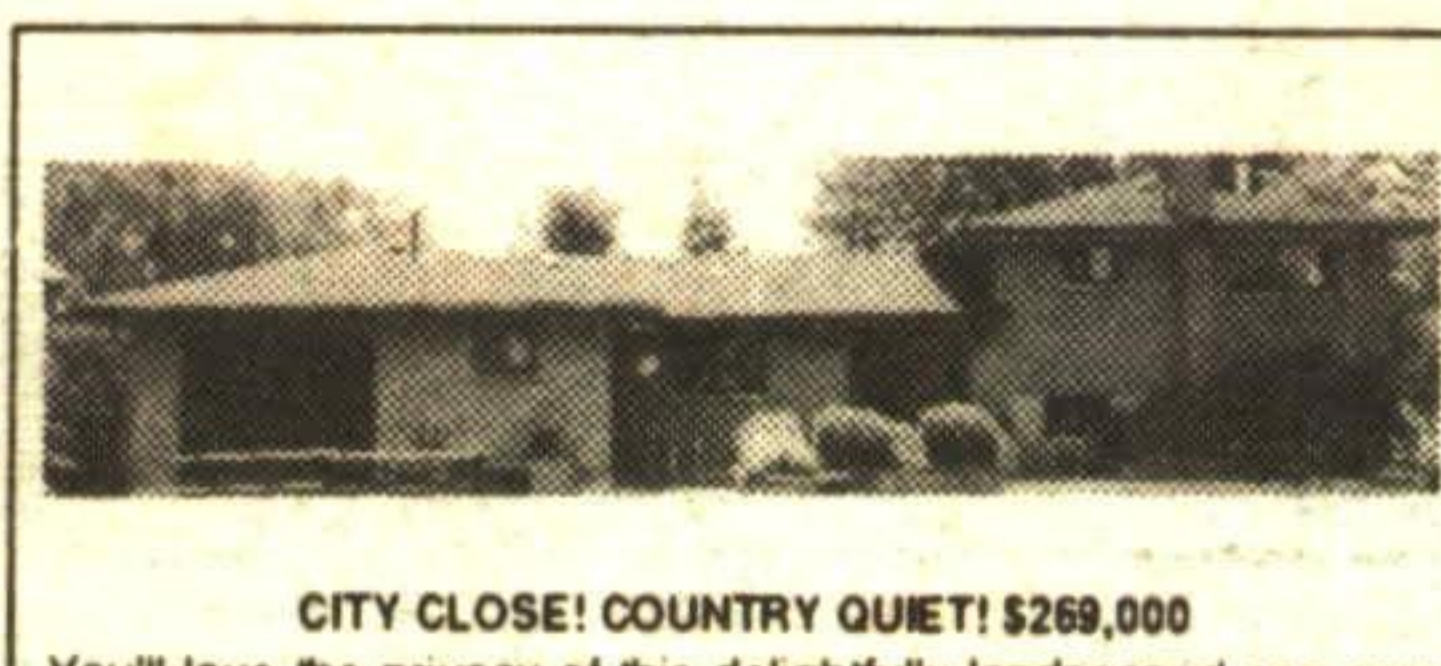
TORONTO: 874-3053



**BUDGET CONSCIOUS? \$99,900**  
Here's the bargain you're looking for! 0.4 acre property opposite prestigious Worden View subdivision on Highway #7 between Acton and Georgetown. 3 bedroom home with high and dry basement. Call Marvyn Morgan\*\* 874-3053 or 853-2086. RMAC93-85



**BREAKFAST ON THE SUNDECK! \$159,900**  
Enjoy the cozy warmth of your recreation room fireplace in the evening. Modern 3 bedroom raised bungalow backing onto greenbelt. Double car garage. Skylight in dining room, 4th bedroom and 2nd 2 piece washroom in basement. View this home now with Marvyn Morgan\*\* 874-3053 or 853-2086. RMAC93-84



**CITY CLOSE! COUNTRY QUIET! \$269,000**  
You'll love the privacy of this delightfully landscaped one acre lot only minutes to the 401 and Mississauga. 3 bedroom home shows pride of ownership. Bright recreation room and woodburning stove. New addition with main floor 2nd bathroom, laundry room, workshop and double garage. Call Marvyn Morgan\*\* 874-3053 or 853-2086. RMAC93-90

This certificate entitles the bearer to one "complimentary" market analysis of their home's current value.

**CALL MARVYN MORGAN NOW!**

Not intended to solicit properties currently listed for sale!

Royal LePage Real Estate Services Ltd., Realtor  
170 Guelph St., Georgetown

**ROYAL LEPAGE**

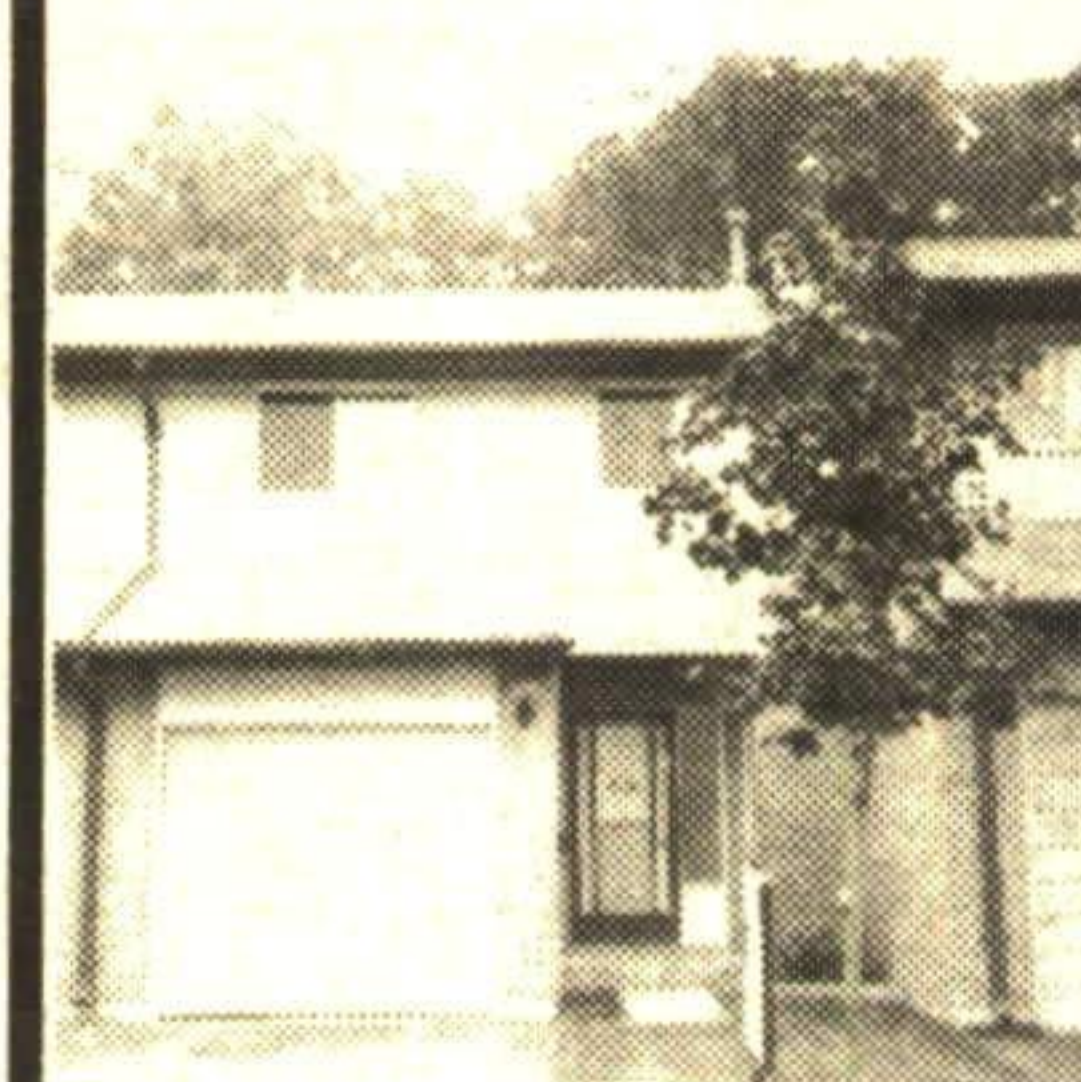
**877-0173**

Tor. 874-3068

\* Sales Rep.



MARILYN CHAMP\*



**A REAL GEM!!**  
Backs onto ravine, ponds, river. Modern decor, prof. finished rec room. See it with Susan Whitteker\*. 20-10



**MOVE-IN CONDITION!**  
Raised bungalow on quiet cres. Extra large yard with mature fruit trees! See it with Marilyn Champ\*. 4-71



BETTY MCKEND\*



**\$133,900**  
Newer home-quiet court - no condo fees - lots of plus factors. Bring an offer! Betty McKend\*. 32-36



**\$168,900**  
Petite house - large lot! Good access roads. A pretty place to start. See today with Betty McKend\*. 16-111



SUSAN WHITEKER\*



**\$258,900 HALTON HILLS**  
Air tight wood burning stove set against a wall of angel stone is only one of many reasons to see this 10 acre hobby farm. Easy access to 401 and in-town amenities. Donna Robbins\*. 13-11

**\$59,900**  
Want to build your own home. This property is one of the few remaining in Halton Hills if you wish to build within town limits. Call Donna Robbins\*. 13-1



DONNA ROBBINS\*



**\$157,000 PARK AREA**  
Large living room and kitchen, updated bathroom, new furnace, central air, upgraded windows, high basement, double garage and more. Call Marilyn Champ\*. 4-72

**\$89,000**  
**YEAR ROUND RETREAT**  
Minutes to Collingwood, skiing in winter and steps to sandy beach in summer. 2 bedroom brick bungalow with basement, car port, forced air heating on 60' x 200' wooded lot. Call Marilyn Champ\*. 4-76

*Have a Safe and Happy Hallowe'en*



**PAM REID\***

\*Sales Representative



**877-5165**

TOR. 874-3040

24 HR PAGER

ARTHUR F. JOHNSON & ASSOCIATES LIMITED REALTOR



**SUPERIOR CRAFTSMANSHIP THROUGHOUT**

This home exudes quality. Over, 4,000 sq. ft. of ceramics and oak on over 2 acres in an estate subdivision. A must to see. Call Pam Reid\* for all the information. 93-2-588



**SPACIOUS BUNGALOW**

Immaculate custom built home with over 3000 sq. ft. of living space. Gorgeous one acre lot, interlocking brick driveway, walkout basement. Must be seen! Call Chris\* to view. 93-2-480



**CHRIS VALE\***

\*Sales Representative

"PERFORMANCE COUNTS"

**877-5165**

TOR. 874-3040

24 HR PAGER

ARTHUR F. JOHNSON & ASSOCIATES LIMITED REALTOR

**URGENT!!!**

**LISTINGS NEEDED  
CALL PAM REID\*  
TODAY**



**16+ ACRES**

Great hobby farm with frontage on two lines. 3 bedroom home with large country kitchen and renovated bath. Bank barn, 4 box stalls, drive shed, and garage/workshop. Call Chris for more information. 93-2-506

**BUILDING LOT, 3.5 ACRES, WEST OF BALLINAFAD. \$79,900. Call Chris Vale\*. 93-2-507**