

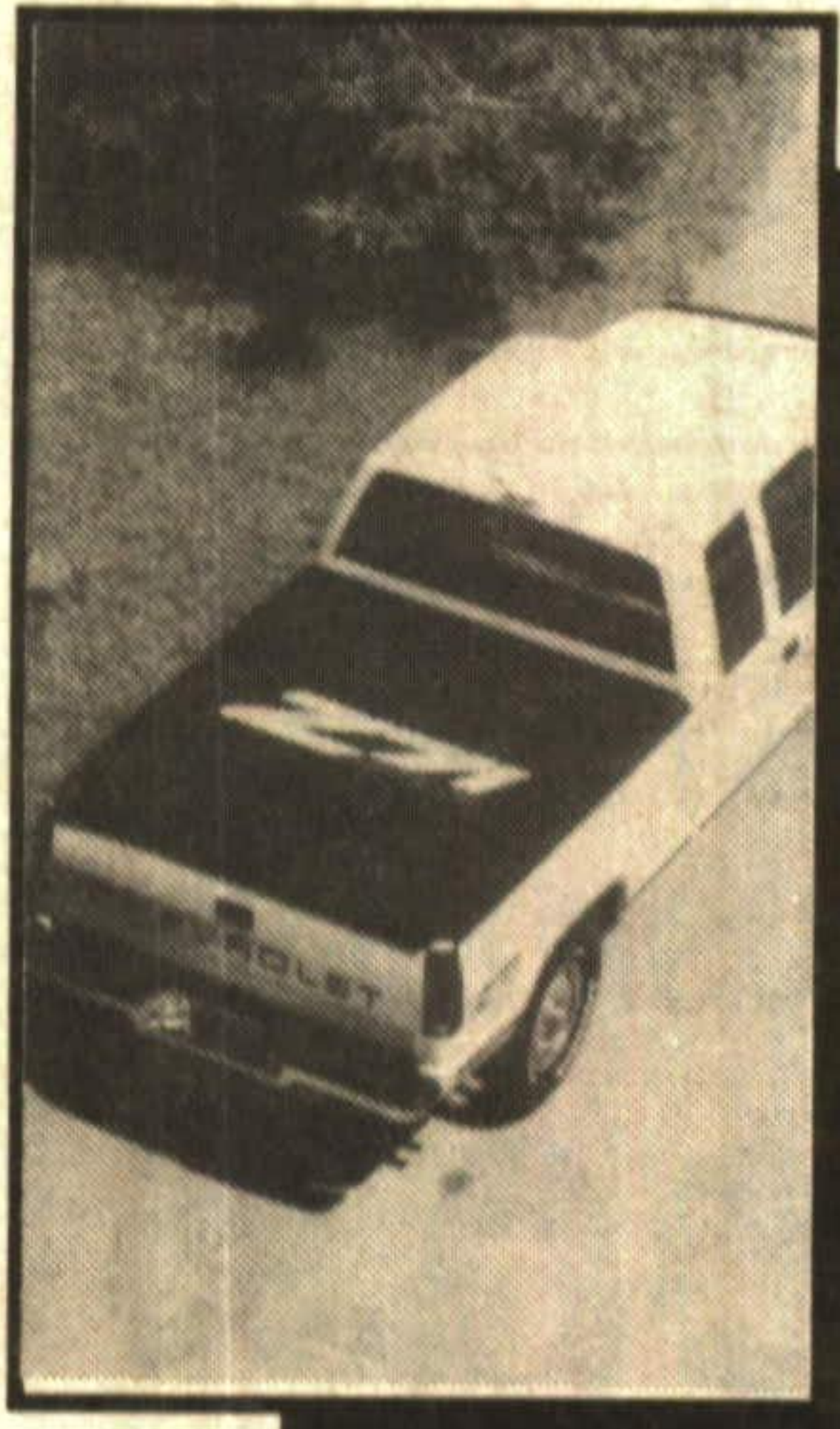
FALL Car Care GUIDE



AUTO APPAREL TRUCK BED COVERS



FALL SPECIALS



F/X TRUCK BED COVERS (THE ORIGINAL)

This cover has graphics chemically etched to the tonneau cover to give a clean, sharp appearance, it also features:

- *IMPROVED GAS MILEAGE
- *COMPLETE LOAD PROTECTION
- *EASY ACCESS FOR COMMERCIAL USE
- *NON CORROSIVE FASTENING SYSTEM
- *LARGE GRAPHIC SELECTION FOR EVERY MAKE & MODEL

From **\$150.00**

w/graphics

From **\$125.50**
w.o/graphics



F/X HOT TOP

- *DURABLE ALUMINUM-LEXAN COMPOSITE
- *GAS SHOCKS FOR EASY ACCESS.
- *UNLIMITED GRAPHIC SELECTION
- *GRAPHICS LUMINATE AT NIGHT



EXTANG ALUMINUM FRAME TONNEAU COVERS

- *BEST ON THE MARKET
- *EASY TO INSTALL
- *NO VELCRO
- *DROP TAIL GATE WITH COVER ON
- *LIFETIME WARRANTY

From **\$325⁰⁰**

F/X HARDTOP

- *DURABLE FIBREGLASS COMPOSITE
- *GAS SHOCKS FOR EASY OPEN - CLOSE
- *COMPLETE WITH ALL HARDWARE
- *WIDE GRAPHIC SELECTION



From **\$500⁰⁰**

Call today for other Sport Truck Specialties at (519) 853-3011

Moving November 1st - 4 mi. south of Acton on Hwy. #25 behind XL Gas Station.

Tips To Keep Your Car from Aging

How many times have you found yourself apologizing to an unexpected guest who is a passenger in your car? A poorly maintained car says a lot about the owner and his or her care of possessions. Your automobile not only represents a large investment of hard-earned dollars, but also reflects personal standards and habits.

Following a regular schedule of personal and professional maintenance enables you to dramatically increase the trade-in value of your car and your pride of ownership. Practice these tips to keep your car from aging.

Set some time aside in your weekly schedule to keep your car's appearance in top condition. A gleaming, well-groomed outward appearance keeps your car looking new longer. Regular washing is a must. Use cool water and a mild soap made for cars. Do not use laundry detergents. They will dull the finish. And, although you may be tempted to improve your suntan while washing your car, don't do it! For best results, always wash your car in the shade.

Vinyl tops need special attention. They will continue to look their best if you use a mild soap and lukewarm water for cleaning. Scrubbing lightly with a soft-bristle brush will thoroughly clean the textured surface. When the vinyl is dry, apply vinyl dressing to revitalize the surface. This keeps it with a showroom look. Follow the product's directions for best results. Mend vinyl rips early. Repair kits will save you many dollars at trade-in time.

The next procedure is removal of tar. Use tar solvents and rub gently. Wash the solvent off before applying wax. Also, give some attention to the chrome area. You can purchase products specifically developed to clean rust spots from chrome. Wash thoroughly before applying wax to the chrome. Wax will retard rusting and keep the chrome in sparkling condition.

In general, you will get your money's worth from soft paste waxes. Using clean, soft cloths, shine only

small areas at a time. Wax will not be needed with every washing, but it's easy to tell when you need to wax your car. Water will no longer form beads on the surface. When waxing, apply steady pressure but never rub hard.

Here are a couple of tips for special problems. Tip one: If you are having difficulty removing bug spots, use a little baking soda dissolved in water. Tip two: If the walls of your tires have lost their new look and are dull in appearance, apply vinyl-top dressing. Do not let the dressing dry before you remove it or it will form tiny white spots. Apply in a small area and wipe off immediately. For best results, follow the directions on the product.

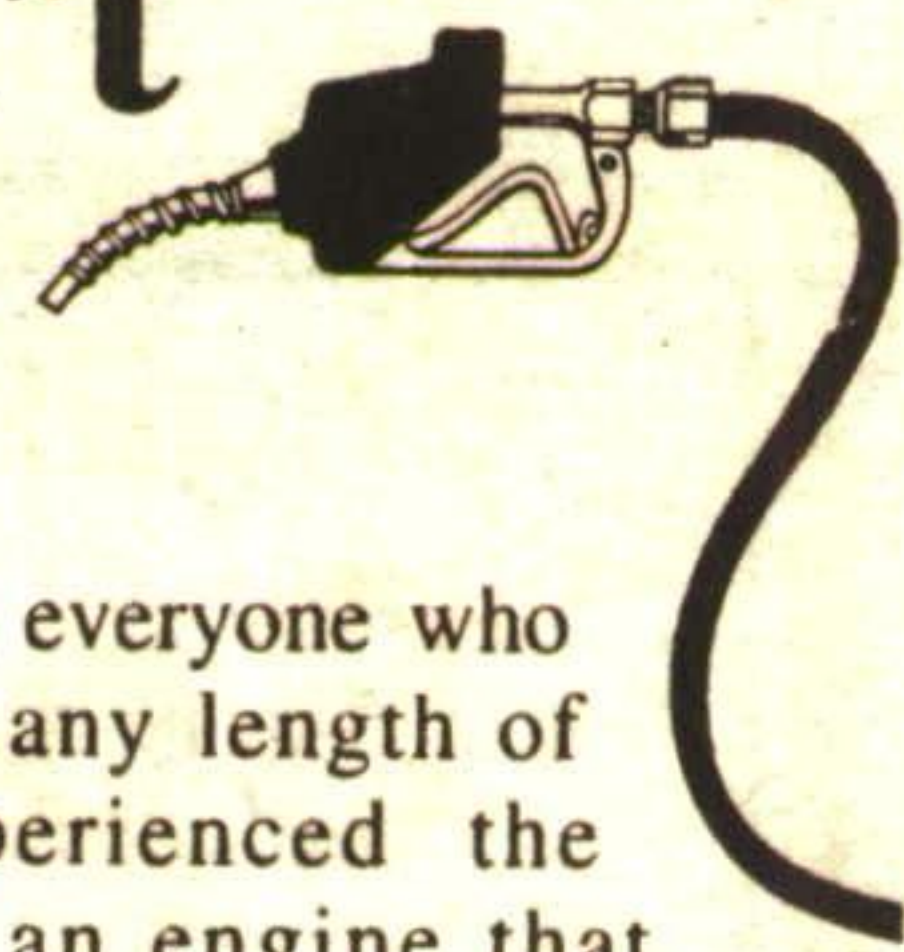
Occasionally, you should check for surface scratches and chips in the paint finish. You may decide to repair these small scars yourself. To find the number of the paint used on your car, you must look in two places—under the hood or on the serial plate. If it's not on the serial plate, which is located on the dash (usually on the driver's side), then look under the hood. Here you should find the plate in the radiator area or on the car's fire wall (the panel between you and the engine area). You should be able to get small bottles of pre-mixed paint from your auto dealer or parts and service center. If he doesn't have your number in stock, he can refer you to a paint shop that does or that will mix the color for you.

Most of the chipped or scratched areas will be very tiny. You will save yourself much expense in professional repair if you stop these tiny areas from rusting and enlarging in size. Usually, a dab of paint will do the trick. Use a steady hand and apply with skill and care so you do not detract from the appearance of your car.

If the spot is the size of a dime or less, you may want to sand it carefully to eliminate a rough border. You should also use a primer to build up layers before applying the paint that matches the finish of your car. This procedure is fine for scratches and chips. It will not work for rust spots. That requires much more preparation.

Do not forget to clean the interior of your car. It needs regular attention, too. Clean out the ashtrays. Wipe down the upholstery with a vinyl furniture spray or cleaning fluid for fabric stains. Use leather soap and water for real leather. The carpeting needs vacuuming and shampooing if dingy. Repair vinyl or fabric rips and tears as early as possible with products developed for just such needs.

If Your Car Won't Stop



Chances are, everyone who has driven for any length of time has experienced the frustration of an engine that refuses to shut down. It continues to cough, chatter and rock after you turn off the ignition switch and remove the key. Your first reaction is to sit there and stare at the dashboard instruments in disbelief. Your second reaction might be to kick the accelerator sharply. At this point, the engine usually stops.

If your car won't stop, the solution may be a very simple one. Change to a higher octane fuel the next time you fill up the tank. This should stop "after-run" or "dieseling" as it is called. The cause is an improper air/fuel mixture setting on the carburetor or the spark timing. Therefore, changing to a higher grade of gasoline usually solves this problem.

Newer model cars are especially prone to after-run and dieseling. This is due to changes in design. Emission controls and provision for more output to run accessories make newer cars run hotter. As a result, your newer model may cause you great irritation by dieseling. If switching to a higher octane gasoline doesn't cure the problem, visit your dealer or service center for a checkup.

TIME

TO CHECK OUT APPLE
AUTO GLASS FOR ALL
YOUR NEEDS!

- WINDSHIELD REPAIR & REPLACEMENT
- AUTO UPHOLSTERY
- SUNROOFS
- VINYL & CONVERTIBLE TOPS
- VAN ACCESSORIES AND MORE



**APPLE
Auto Glass**

354 GUELPH ST.
GEORGETOWN
(Knolcrest Plaza)
873-1655

