

LET US HELP YOU

MAKE THE RIGHT MOVE



PAM REID*
*Sales Representative



877-5165

TOR. 874-3040
24 HR PAGER

ARTHUR F. JOHNSON & ASSOCIATES
LIMITED REALTOR



PROFESSIONALLY LANDSCAPED

This custom built home has it all. 4 bedrooms, 2 fireplaces, on over an acre, only minutes to town. Shows to perfection. Don't miss this one! Call Pam Reid*. AML-BR



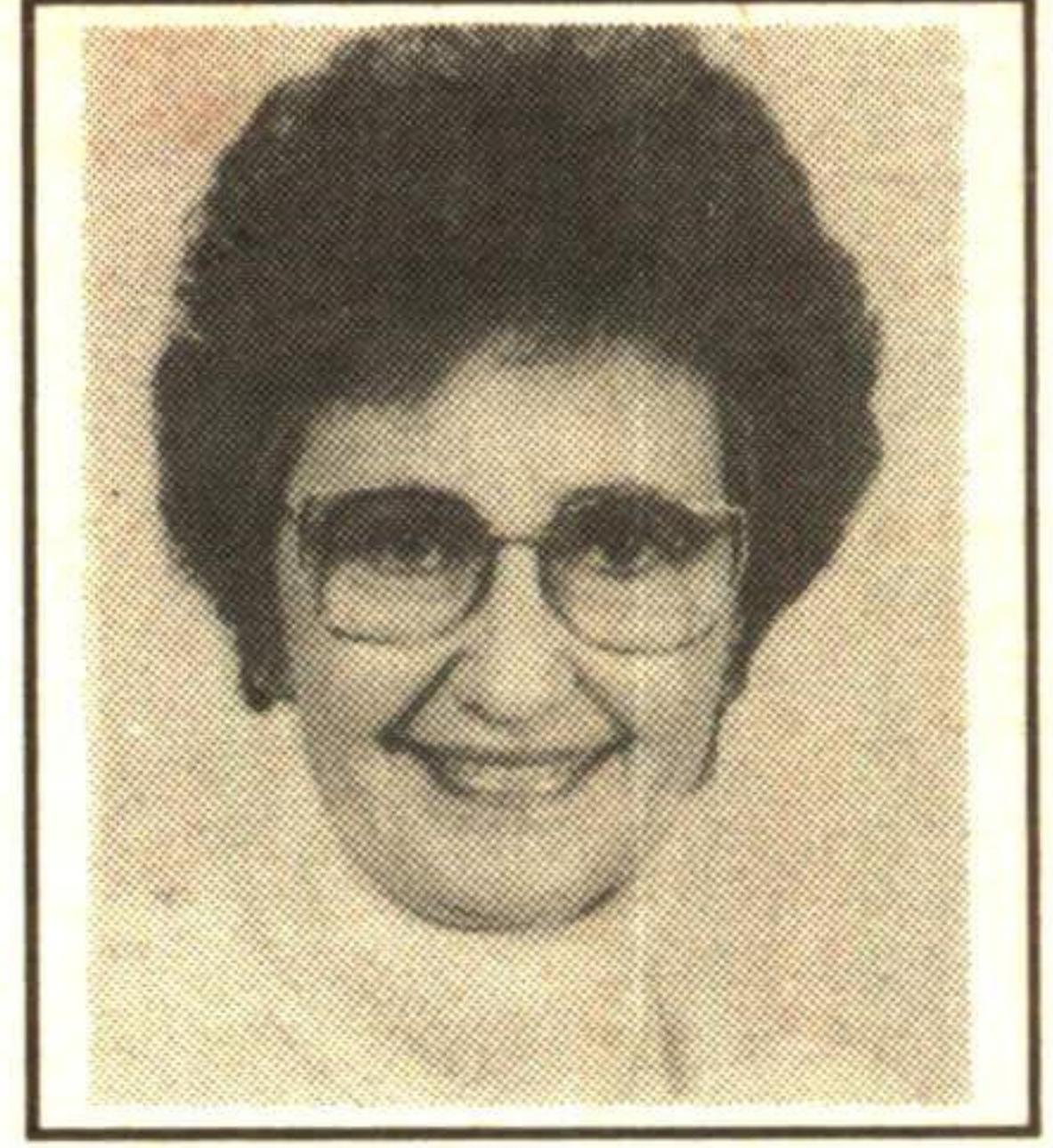
SPACIOUS BUNGALOW

Immaculate custom built home with over 3000 sq. ft. of living space. Gorgeous one acre lot, interlocking brick driveway, walkout basement. Must be seen! Call Chris* to view. 93-2-480



16+ ACRES

Great hobby farm with frontage on two lines. 3 bedroom home with large country kitchen and renovated bath. Bank barn, 4 box stalls, drive shed, and garage/workshop. Call Chris for more information. 93-2-506



CHRIS VALE*
*Sales Representative

"PERFORMANCE COUNTS"

877-5165

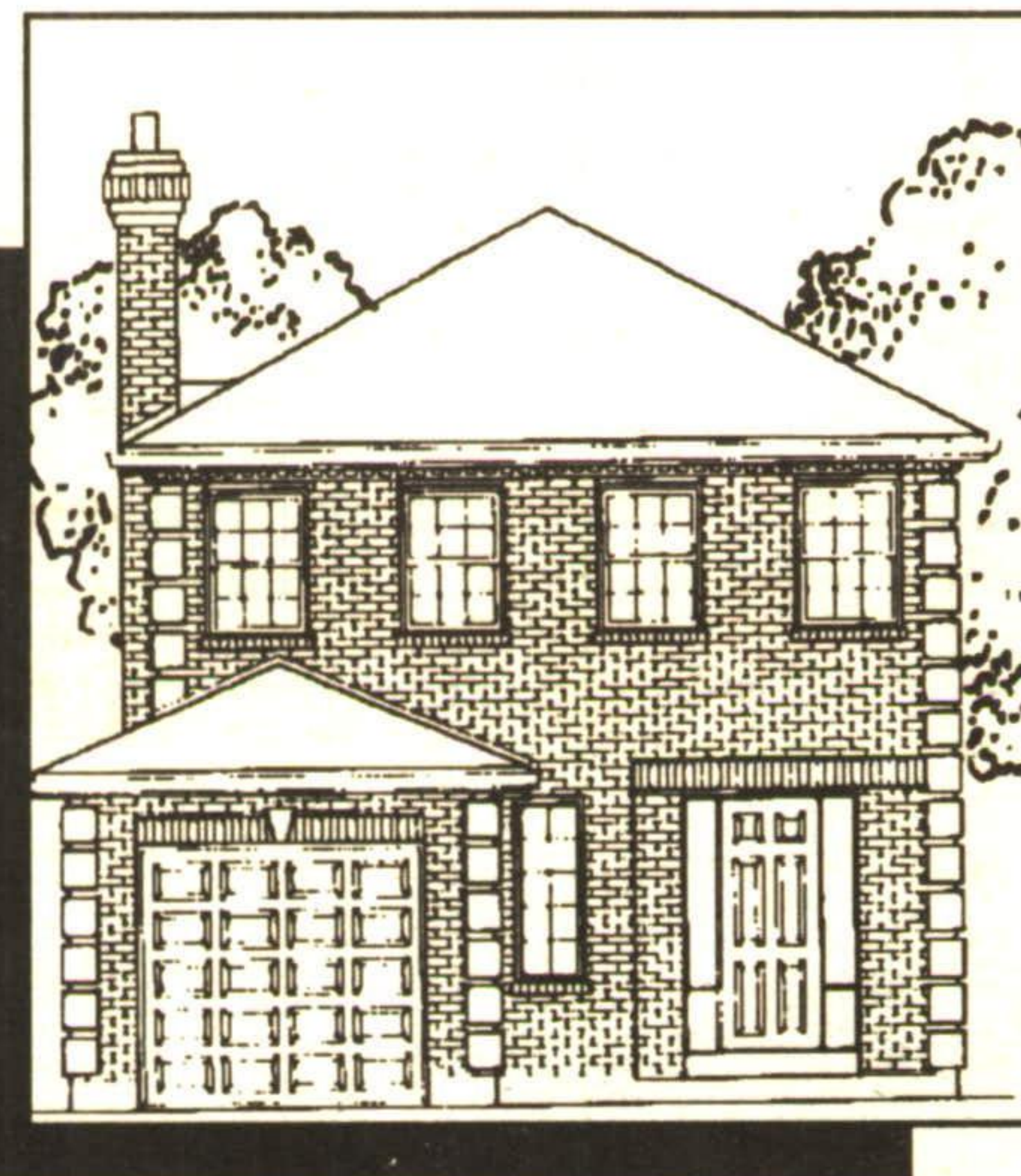
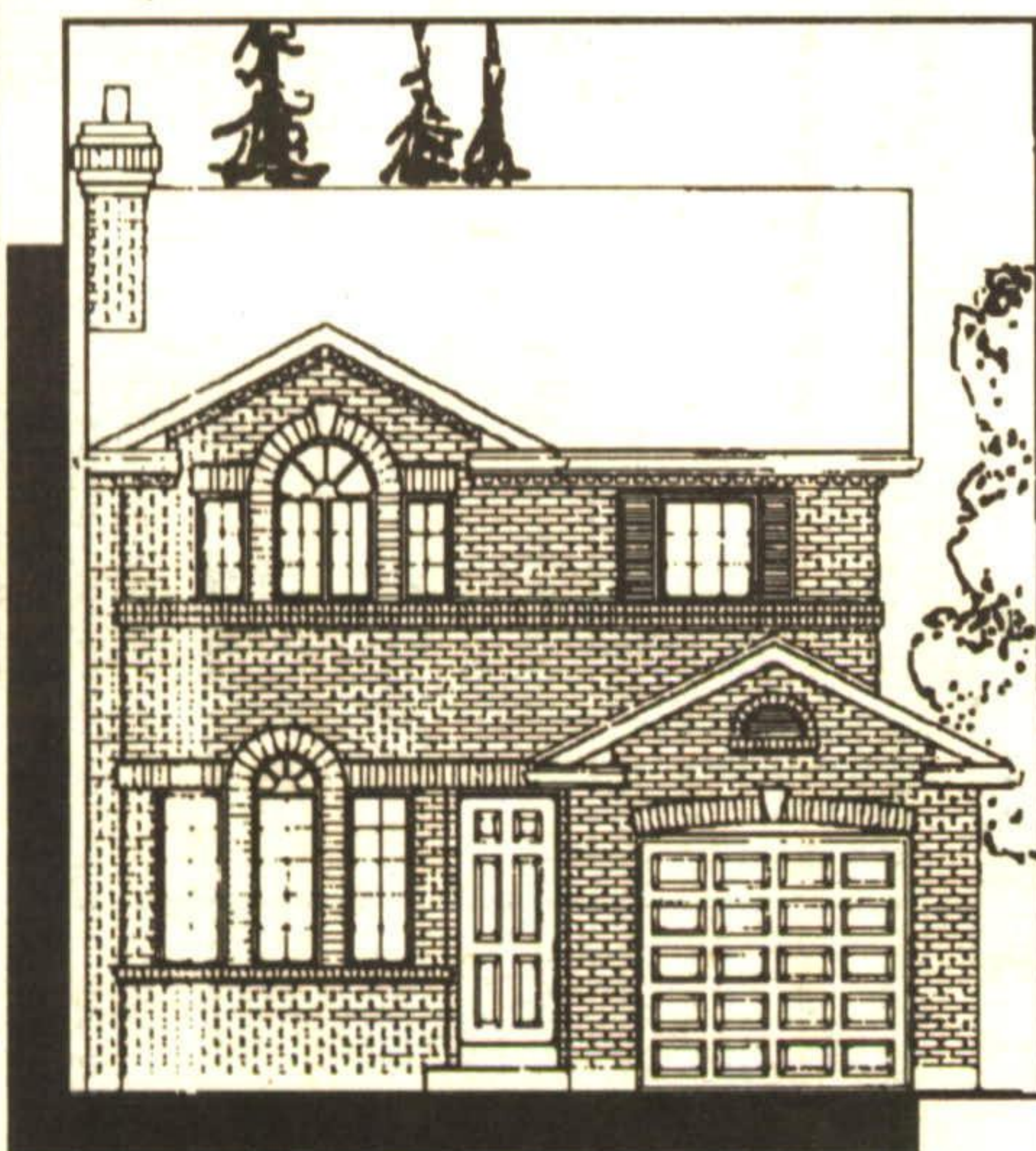
TOR. 874-3040
24 HR PAGER

ARTHUR F. JOHNSON & ASSOCIATES
LIMITED REALTOR

BUILDING LOT, 3.5 ACRES, WEST OF BALLINAFAD. \$79,900. Call Chris Vale*. 93-2-507

BAYFIELD HOMES IN HALTON HILLS

FROM **\$141,900** (GST INCLUDED) Only 5% Down
SINGLES*
(LINKED BELOW GROUND)



**YOUR CHANCE
TO BUY
AFFORDABLE
QUALITY - BUILT
HOMES!**

**HURRY!!
ONLY A FEW LEFT!!**

Yvonne or Peter Hrkac
Sales Representatives*
Re/Max Suburban (91) Inc.



**Don't be disappointed!
Call 877-5211 or 874-3051
For Your Personal Appointment**

