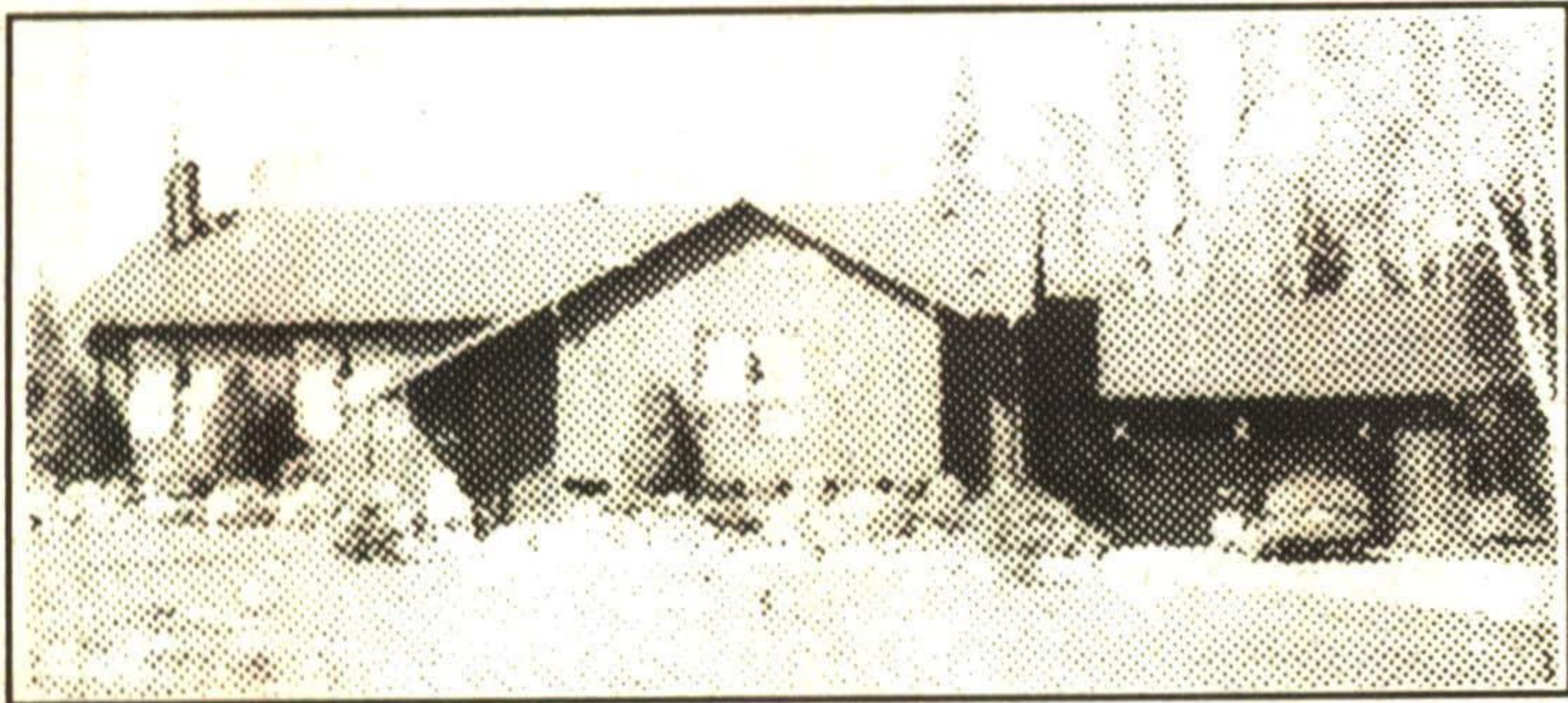




professional real estate services inc.  
846-1100

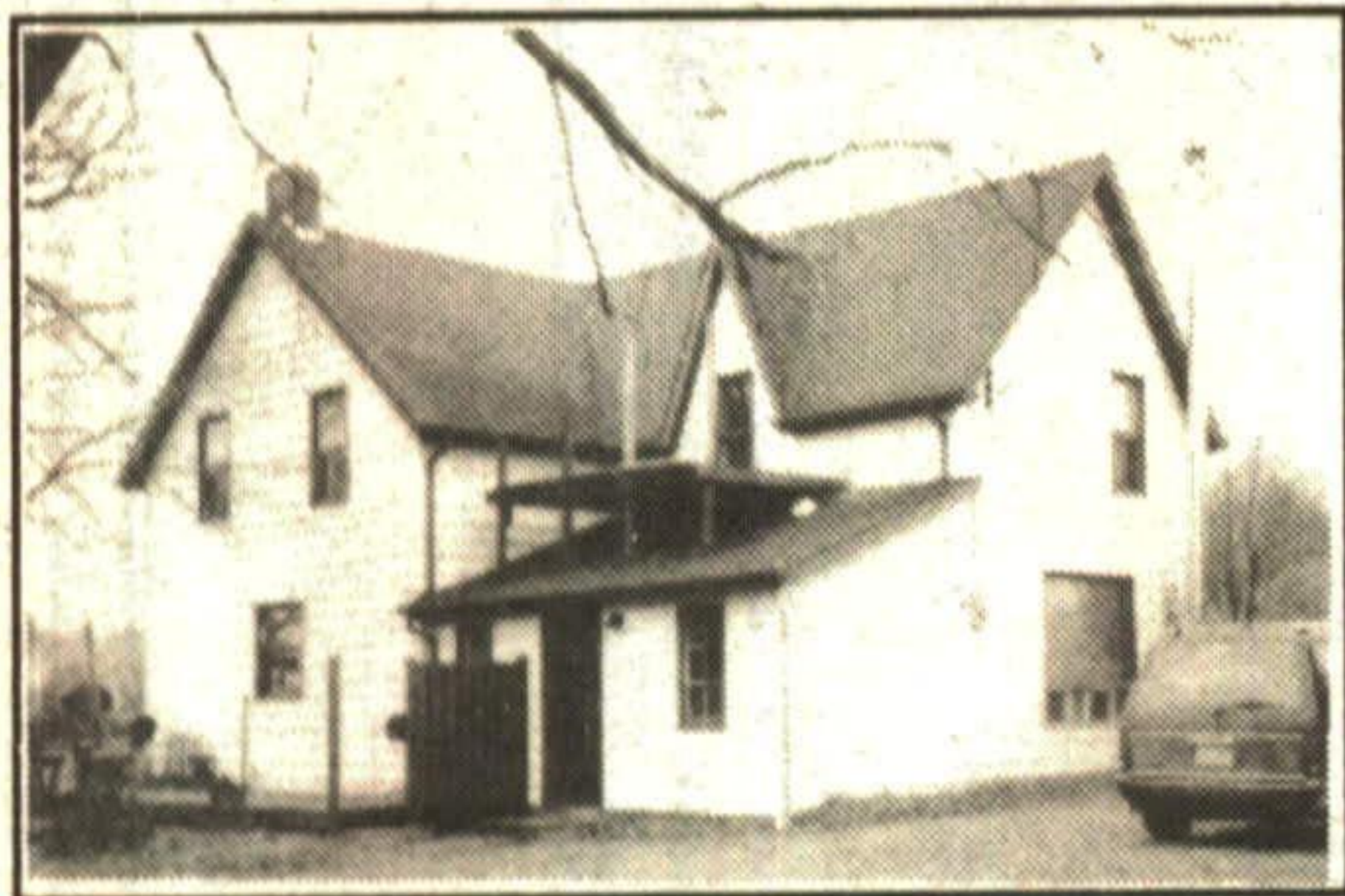


**3RD LINE, ERIN**

Custom bungalow on 4 acres. 3 bdrms., 2-1/2 baths, heat pump a/c, 2 fireplaces, oak plank floors, cedar closets, eat-in kitchen and much more. Call Linda or Reg Bent, Sales Representatives at (416) 846-1100, for your view of this spectacular home!

**LIMEHOUSE AREA**

Approx. 2.7 acres, renovated 4 bedroom home, oversized garage or workshop, large kitchen with walkout to deck. Asking price is \$199,000.

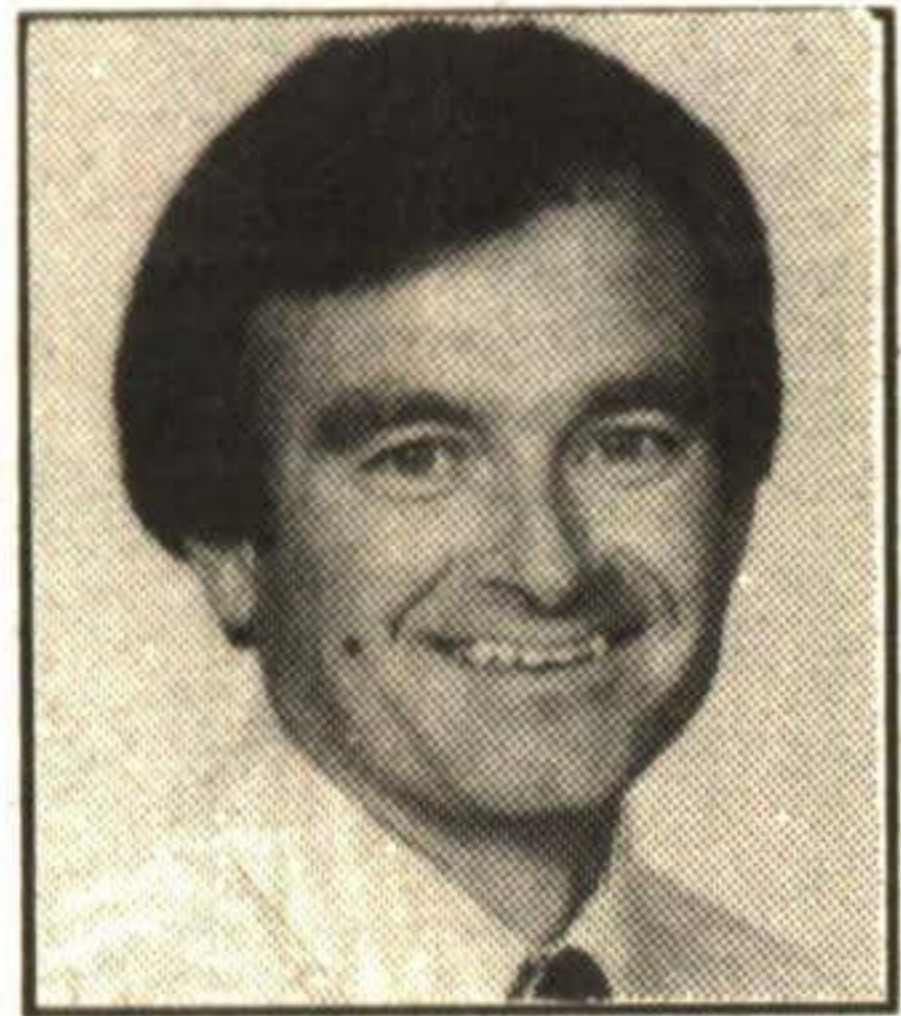


"Listing and Selling Real Estate Since 1966"

Call Don Sargent, F.R.I., C.R.F.  
Associate Broker

877-5165/874-3040

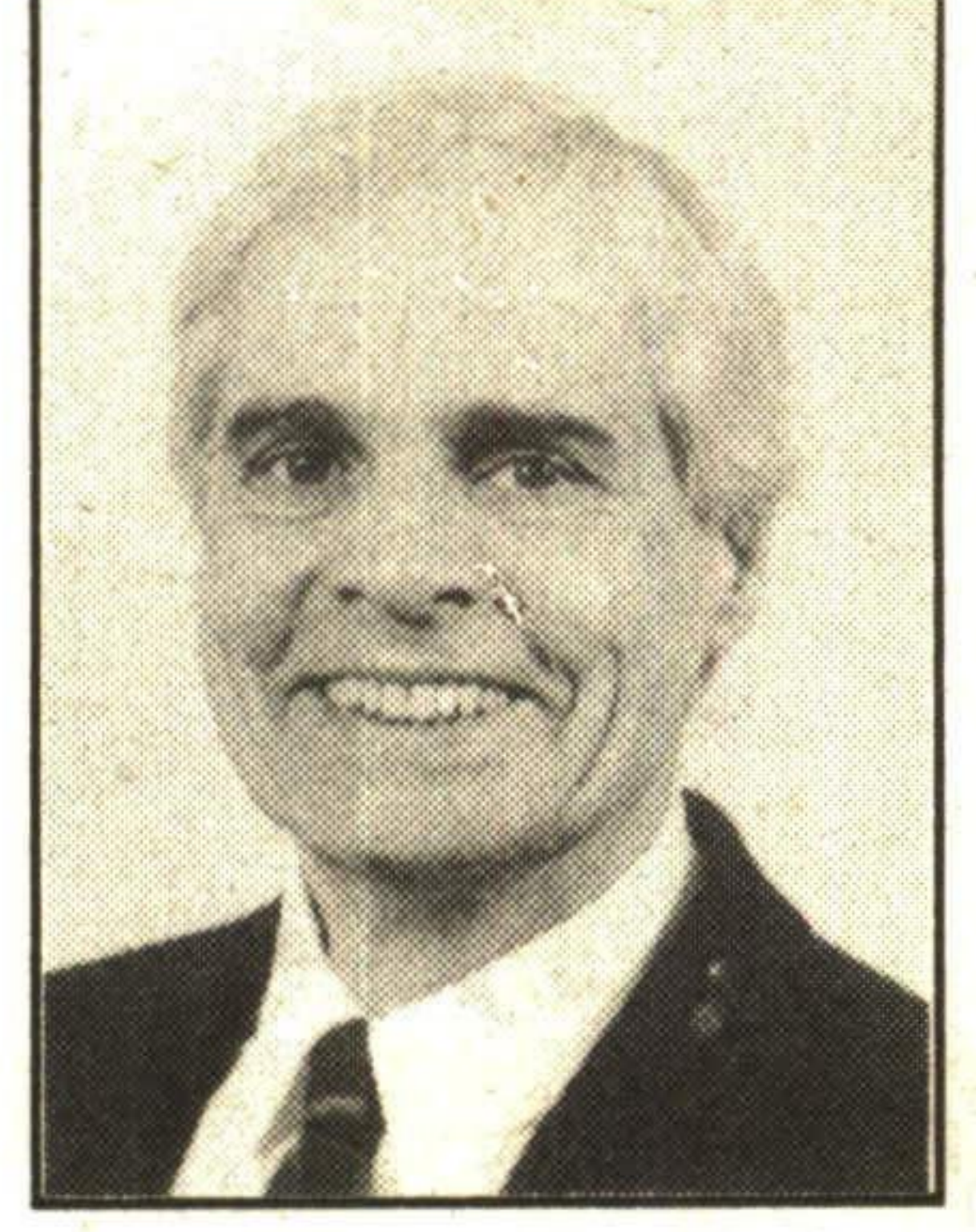
ARTHUR F. JOHNSON & ASSOCIATES LIMITED REALTOR



**ANNOUNCEMENT**



**JOHNSTON & DANIEL**



George Jackson, Vice President and Manager of the Caledon Office of Johnston & Daniel Limited, is pleased to announce the appointment of Carole MacLeod as Sales Representa-

tive in the Caledon office. Carole has been a consistent award winning sales representative with a leading real estate company for the past 11 years. In keeping with our standard of excellence, we are pleased to welcome Carole as a member of our dynamic country office group.

George Jackson, Vice President and Manager of the Caledon Office of Johnston & Daniel Limited, is pleased to announce the appointment of Malcolm MacLeod, P. Eng. as Sales Representative in the Caledon office in Cheltenham. A 23 year resident of Georgetown, he brings impressive interpersonal and executive skills to his new profession of real estate sales. Friends and associates are welcome to visit him at the Cheltenham Office.



**A LUXURY HORSE FARM NEAR TERRA COTTA**

50 rolling acres, exquisitely restored 1866 stone home, 19 stall horse barn, 60' x 120' arena, a rare treasure, fenced fields. Carole MacLeod, Johnston & Daniel Limited Realtor 416-838-3830 or 877-8515.

**MORTGAGE RATES THIS WEEK**

RATES TAKEN AUGUST 13, 1993

Institutions	Variable	6 Mths.	1 Yr.	2 Yrs.	3 Yrs.	4 Yrs.	5 Yrs.
Bank of Montreal	5.70 5-3/4op	5-3/4 6-3/4op	6-1/2 7op	7-1/2	8-1/4	8-1/2	8-3/4
Canadian Imperial	5.70	5-3/4 6-3/4op	6-1/2 7op	7-1/2	8-1/4	8-1/2	8-3/4
Hongkong Bank	5-3/4	5-3/4 6-3/4op	6-1/2 7op	7-1/2	8-1/4	8-1/2	8-3/4
Laurentian Bank	n/a	5-3/4 6.75op	6-1/2 7op	7-1/2	7.95	8.50	8.70
Manulife Bank	n/a	5-3/4	6-1/2 7op	7-1/2	8-1/4	8-1/2	8-3/4
National Bank	n/a	5-3/4 6-3/4op	6-1/2 7op	7-1/2	8-1/4	8-1/2	8-3/4
Royal Bank	5-3/4	5-3/4 6-3/4op	6-1/2 7op	7-1/2	8-1/4	8-1/2	8-3/4
Scotiabank	5-3/4	5-3/4 6-3/4op	6-1/2 7op	7-1/2	8-1/4	8-1/2	8-3/4
Toronto-Dominion	5.75	5-3/4	6-1/2 7op	7-1/2	8-1/4	8-1/2	8-3/4
Canada Trust	n/a	5-3/4 6-3/4op	6-1/2	7-1/2	8-1/4	8-1/2	8-3/4
Co-Operative Trust	n/a	5-3/4 6-3/4op	6-1/2 7op	7-3/8 8-1/4op	8-1/4 9-1/4op	8-1/2	8-3/4
Household Trust	n/a	5-1/2	6-1/4	7-1/4	8	8-3/8	8-1/2
Jet Power Credit Union	5-3/4	6-1/2 6-3/4op	6-1/2 7op	7-1/2	8-1/4	8-1/2	8-3/4
Montreal Trust	n/a	5-3/4 7-3/4op	6-1/2 7-1/2op	7-1/2	8-1/4	8-1/2	8-1/2
National Trust	5-3/4	5-3/4	6-1/2 7-1/4op	7-1/2	8-1/4	8-1/2	8-3/4
Premier Trust	n/a	5-3/4	6-1/2 7-1/4op	7-1/2	8-1/4	8-1/2	8-3/4
Prenor Trust	n/a	5-1/2 6-1/2op	6-1/4 6-3/4op	7 7-3/4op	8	8-1/2	8-3/4
Royal Trust	5-1/2	5-3/4 6-3/4op	6-1/2 7op	7-1/2	8-1/4	8-1/2	8-3/4

Prepared by Fiscal Agents.  
Notes: \*\*Interest rate charged subject to adjustment during term of mortgage. \*Please consult institutions for term of years available. All rates are prime rates and subject to change without notice.

R.O.R. = RATES ON REQUEST  
op = OPEN  
-- NOT QUOTING

R/O = RENEWALS ONLY  
N/A = NOT APPLICABLE

1/8 - .125  
3/8 - .375  
5/8 - .625  
7/8 - .875



ENGLEMANO

"I kept his ashes in the urn until we had that big ice storm last winter."

FOR TRAVEL INFORMATION - GIVE US A CALL



232 GUELPH ST., UNIT 10, GEORGETOWN  
873-2000