

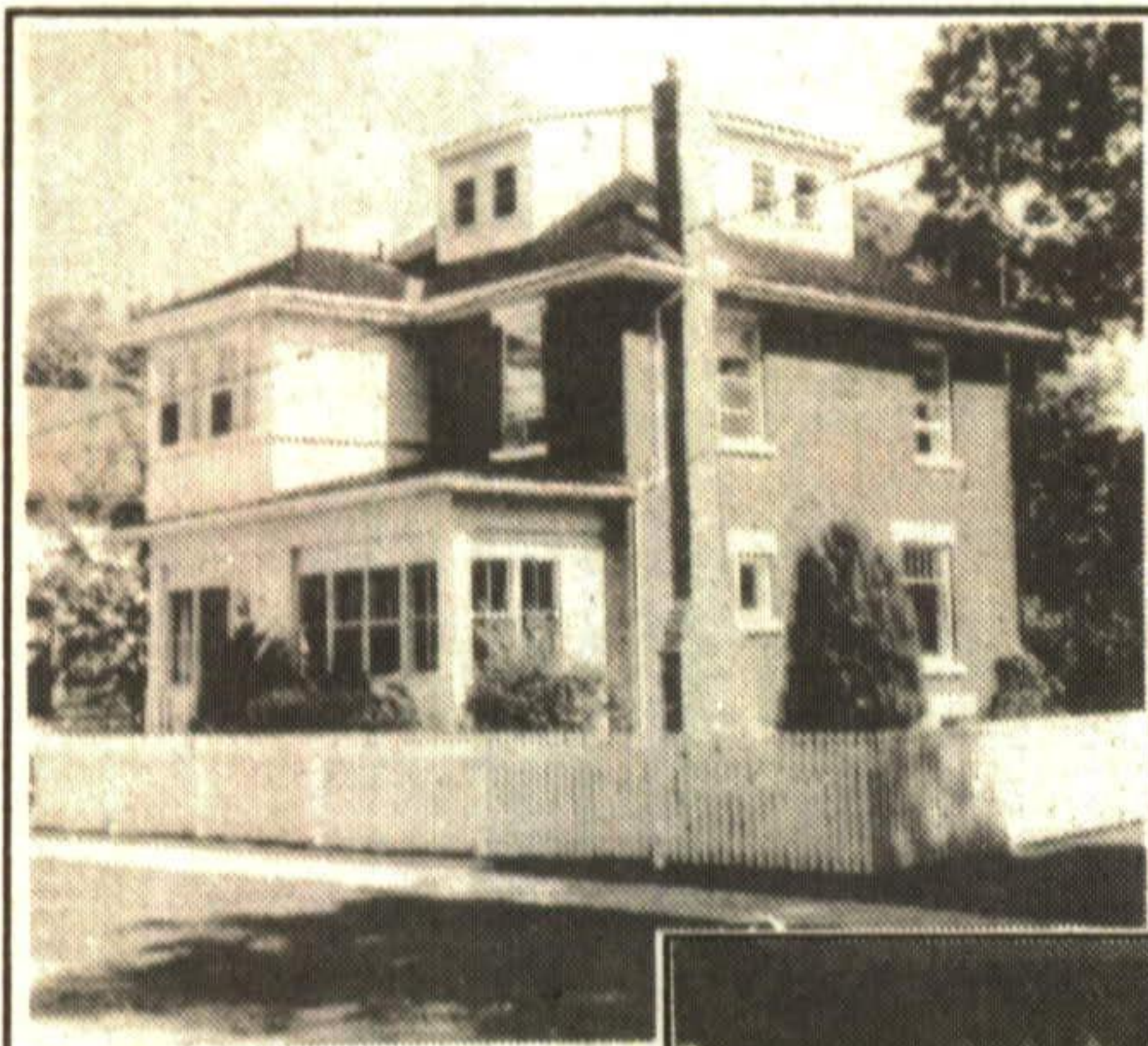
Real Estate

Still the best investment.



Step Back In Time

\$229,000



and experience the charm and elegance of days gone by through classic architecture. This turn of the century residence offers many original architectural details found only in classic older homes. A picturesque piece of history tastefully renovated to preserve its classic charm, dignity and character, with the convenience and comfort of today.

COOL LAKE BREEZES beckon for sailing, fishing and swimming from your back door. SET IN AN EXCLUSIVE neighbourhood of well tended older homes, this fine residence is only a short stroll from the park, library, community centre and downtown shops. Set on a mature treed lot, backing onto the lake, it is further enhanced by a brick patio and extensive gardens.

* Hand wrought white picket fence surrounds the property and entices guests inside

* Bright and gracious foyer has a staircase which leads to upper levels

* French door leads into the inviting living room which radiates gracious formality and charm and features a reclaimed brick fireplace and lovely multi-paned corner windows which floors the room with light.

* Pocket doors dramatically divide the living and dining rooms.

* Polished hardwood floors in spacious dining room will set off your treasured Oriental rugs and has a stunning view of the lake and gardens.

* Delightful and well designed kitchen has been beautifully remodelled with oak cupboards and features the convenience of built-in dishwasher, garbage disposal, built-in microwave and breakfast counter. Just off the kitchen there is a small porch or mud room.

* Second floor level features 3 good sized bedrooms in addition to a brand new bathroom which retains the charming original claw foot tub, but includes a modern corner shower stall, vanity and a bidet.

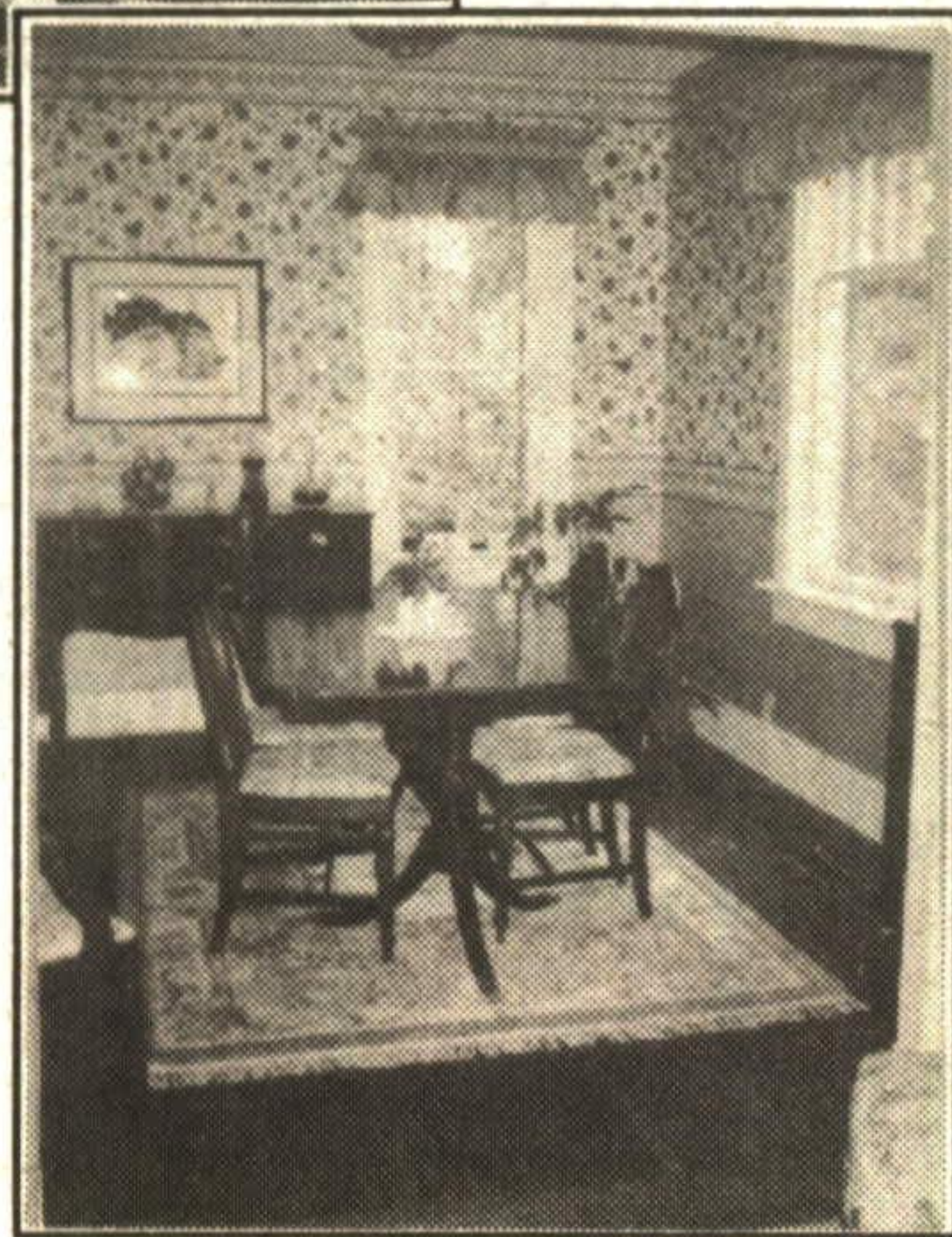
* Third storey or walk up attic level has been professionally built and contains 3 cozy children's rooms and a four piece bathroom. Very bright and airy, this upper level could be converted to a studio or family room if needed.

* Unspoiled basement is high and dry and has laundry facilities, storage area, and a wonderful wine storage facility.

* Enjoy the convenience and comfort of the new high efficiency gas furnace in addition to the central air conditioning.

* Roof has been replaced and wiring and plumbing have been updated.

Built CIRCA 1900 this lovely residence has been tastefully decorated and beautifully maintained. The quality, details and appointments make this fine home truly gracious and charming. The perfect home for your treasured antiques.



Re/Max Suburban (91) Inc.

For Your Personal Appointment Call Peter or Yvonne Hrkac

877-5211 or 874-3051



CONNECT



JOHNSTON & DANIEL

CONNECTED



OPEN HOUSE

SUNDAY, AUGUST 22
1-5 P.M.

Trafalgar Rd. north through Ballinafad south of highway 24 on east side.



Charming Century Stone C. 1853 - 95 rolling acres, 2 ponds/creek, large bank barn. Delightful setting. Asking \$539,000. Call Cathy Buckrell at 838-3830.

JD93036

14396 CREDITVIEW ROAD, CHELTENHAM, ONTARIO L0P 1C0
TELEPHONE (416) 838-3830 (CALEDON) (416) 846-2270 (TORONTO LINE)

Turf Tips



Duncan Atkinson
Eileen Atkinson

WHITE GRUBS

Dead, brown patches in your lawn during spring or fall may indicate White Grub damage. These grubs are the larvae of June Beetles and European Chafers. Beetles lay eggs which hatch in summer. Damage is very noticeable in fall, especially when skunks, raccoons and moles dig up the lawn to feed on the grubs.

In the dead patches, the weakly rooted sod can be pulled back to reveal the fat, white, C-shaped grubs. They have a brown head and three large pairs of legs.

White grub damage can be stopped with a precise application of recommended insect control material. Ideally, the application should be applied in late summer or early fall, when the grubs are smallest and most susceptible. If the grubs are not controlled in the autumn, they will continue feeding on the grass roots in the spring. Therefore a spring application will be necessary.

NEXT WEEK: DETHATCHING YOUR LAWN

Weed Man®

WE CARE FOR YOUR LAWN!

This is a weekly lawn care column.

For additional information contact Duncan or Eileen

873-2062



72 Mill Street #8
Georgetown, Ontario

LET US HELP YOU

MAKE THE RIGHT MOVE



PAM REID*

*Sales Representative



877-5165

TOR. 874-3040

24 HR PAGER

ARTHUR F. JOHNSON & ASSOCIATES
LIMITED REALTOR



PROFESSIONALLY LANDSCAPED
This custom built home has it all. 4 bedrooms, 2 fireplaces, on over an acre, only minutes to town. Shows to perfection. Don't miss this one! Call Pam Reid*. AML-BR



Sunday 2-4 p.m. \$279,000

A RARE GEM!

Immaculate custom built bungalow with full walkout basement. Gorgeous one acre lot in Village of Ballinafad. Call Chris* for your personal showing.

WATCH FOR SIGNS. 93-2-480



CHRIS VALE*

*Sales Representative

"PERFORMANCE COUNTS"

877-5165

TOR. 874-3040

24 HR PAGER

ARTHUR F. JOHNSON & ASSOCIATES
LIMITED REALTOR